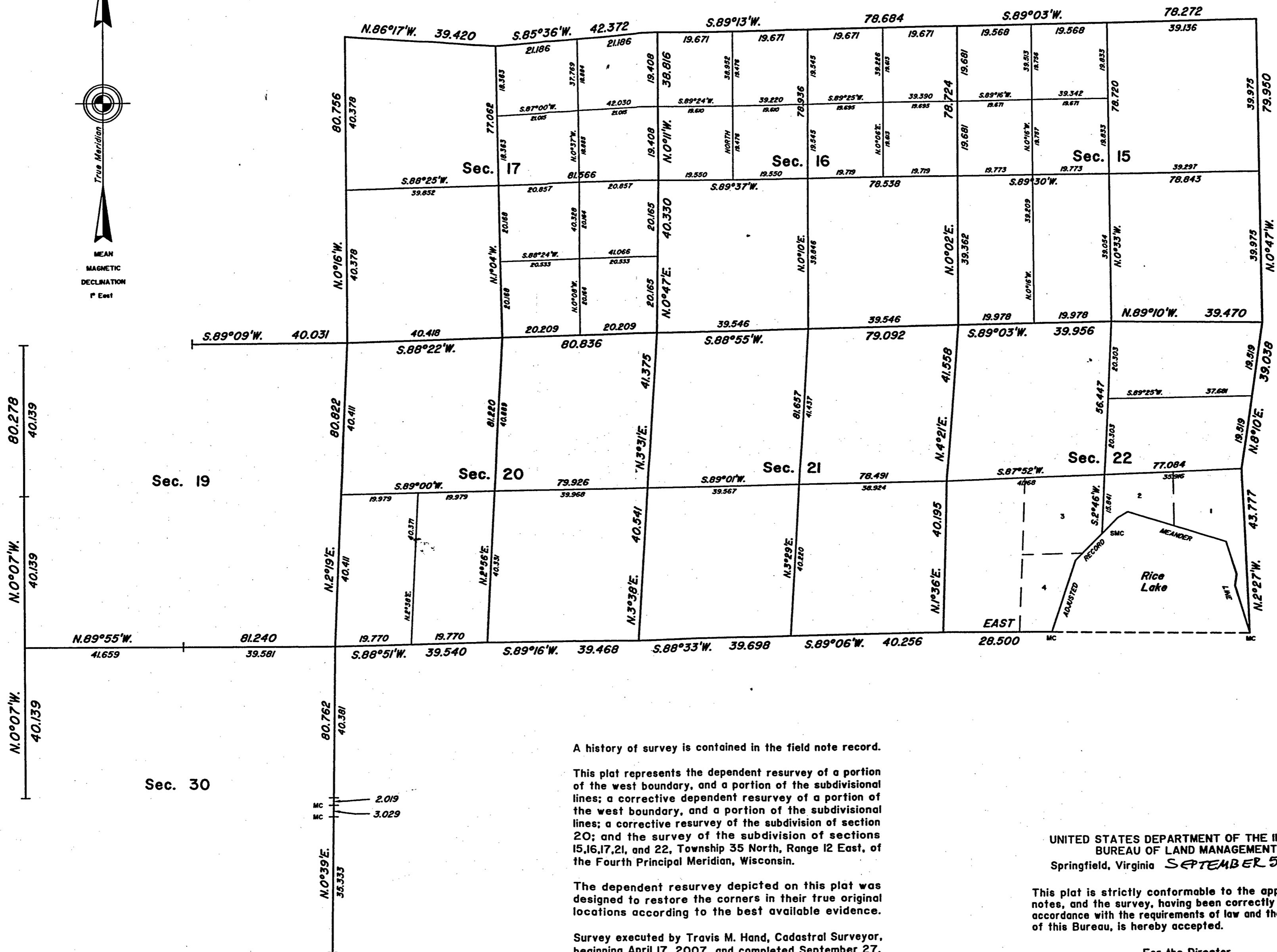
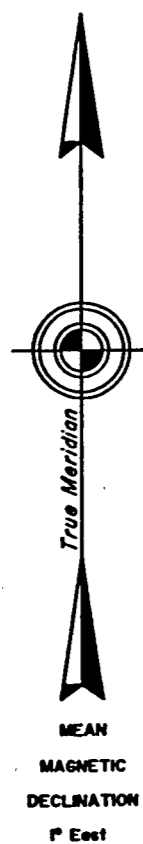


TOWNSHIP 35 NORTH, RANGE 12 EAST, OF THE FOURTH PRINCIPAL MERIDIAN, WISCONSIN

DEPENDENT RESURVEY AND SUBDIVISION OF SECTIONS



Lat. 45°29'37.85" N.
Long. 88°57'50.67" W.
NAD 83

A history of survey is contained in the field note record.

This plat represents the dependent resurvey of a portion of the west boundary, and a portion of the subdivisional lines; a corrective dependent resurvey of a portion of the west boundary, and a portion of the subdivisional lines; a corrective resurvey of the subdivision of section 20; and the survey of the subdivision of sections 15, 16, 17, 21, and 22, Township 35 North, Range 12 East, of the Fourth Principal Meridian, Wisconsin.

The dependent resurvey depicted on this plat was designed to restore the corners in their true original locations according to the best available evidence.

Survey executed by Travis M. Hand, Cadastral Surveyor, beginning April 17, 2007, and completed September 27, 2007, pursuant to Special Instructions dated April 4, 2007, for Group No. 180, Wisconsin.

Except as new or modified hereon, the lottings and areas are as shown on the plat approved November 23, 1865.

UNITED STATES DEPARTMENT OF THE INTERIOR
BUREAU OF LAND MANAGEMENT
Springfield, Virginia SEPTEMBER 5, 2008

This plat is strictly conformable to the approved field notes, and the survey, having been correctly executed in accordance with the requirements of law and the regulations of this Bureau, is hereby accepted.

For the Director

Chief Cadastral Surveyor
Eastern States

FOREST CO SURVEYOR
FILE # 351216-20080905
DATE BY