

U.S. PUBLIC LAND SURVEY MONUMENT RECORD

(As Required By s. A-E 7.08, WI Adm. Code)

History of original corner establishment and subsequent restorations and description of any record, monument, occupational, testimonial or other evidence considered:

THIS CORNER WAS ESTABLISHED DURING THE ORIGINAL SURVEY OF THIS TOWNSHIP, AS NOTED IN THE ORIGINAL FIELD NOTES FOR THE ORIGINAL SURVEY OF T35N-R13E, 4th PRINCIPLE MERIDIAN

1965 NEAL SPERHAKE, S-463, SET KIMBERLY CLARK MONUMENT IN PLACE OF 1 INCH AND 2 "NEW" BEARING TREES

1993 GLEN BARKER, S-1682 REPLACED DAMAGED MONUMENT WITH NEW FOREST COUNTY MONUMENT

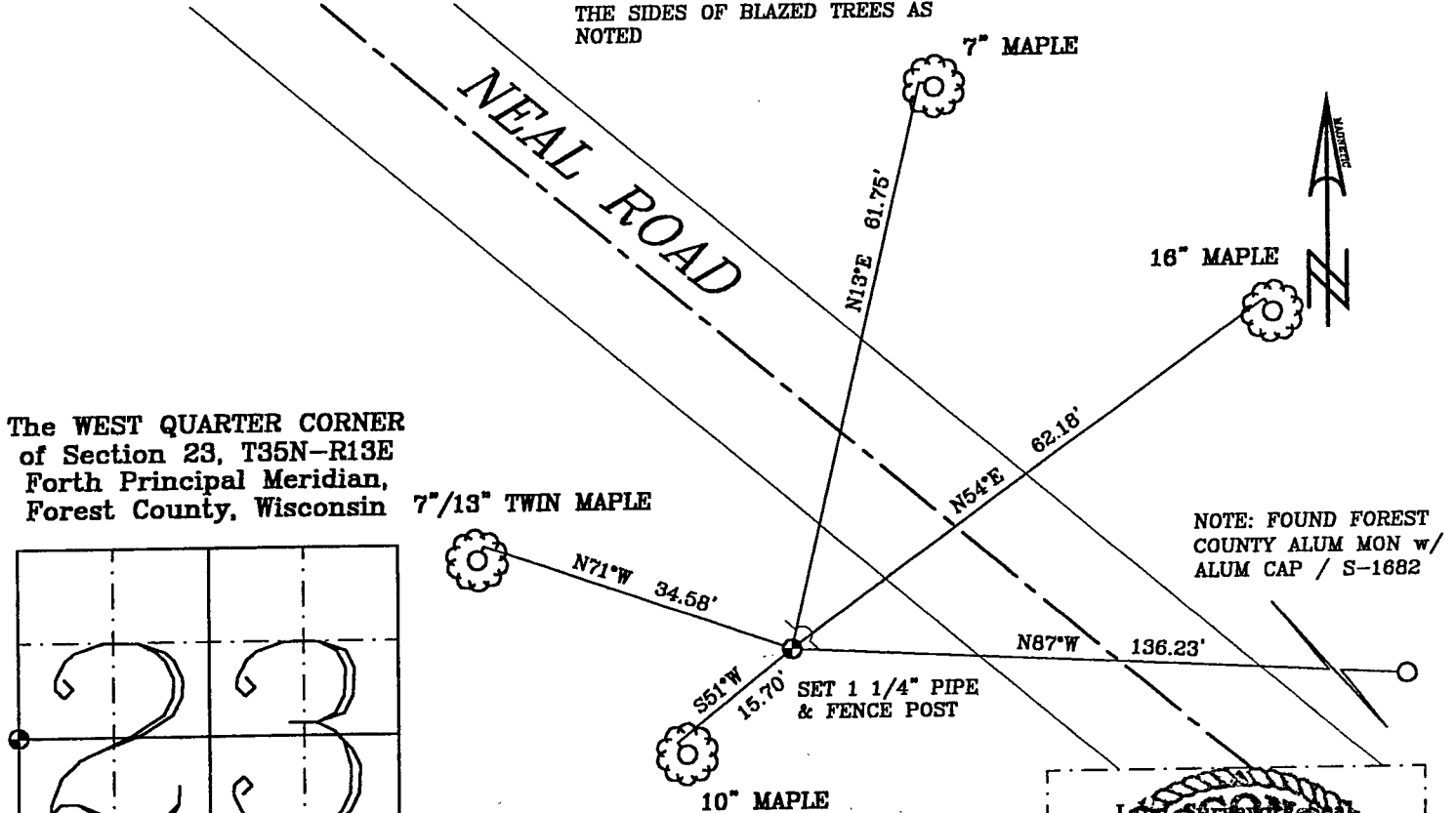
2011 SEE PAGE 2

Corner was: (Check All That Apply)

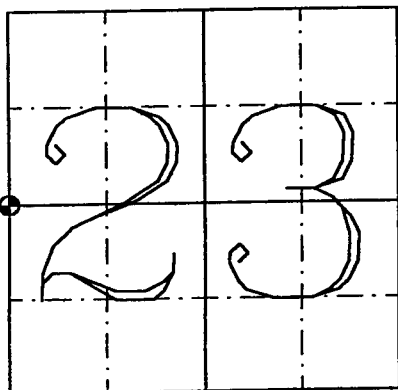
- ☐ Restored through acceptance of an obliterated evidence location
- ☒ Restored through acceptance of a found perpetuated location
- ☐ Considered a lost corner and reestablished through lost corner proportionate methods(include a plan view drawing showing distances and directions to other Public Land Survey Corner used for proportioning and determining the corner location)
- ☒ Restored or reestablished in a location that differs from a previous restoration of reestablishment(include a plan view drawing and indicate what was set and/or found)

Describe the monument and accessories used to perpetuate the location of this corner. (include a plan view drawing and indicate what was set and/or found)

NOTE: TIES ARE 60d SPIKE IN THE SIDES OF BLAZED TREES AS NOTED



The WEST QUARTER CORNER
of Section 23, T35N-R13E
Forth Principal Meridian,
Forest County, Wisconsin



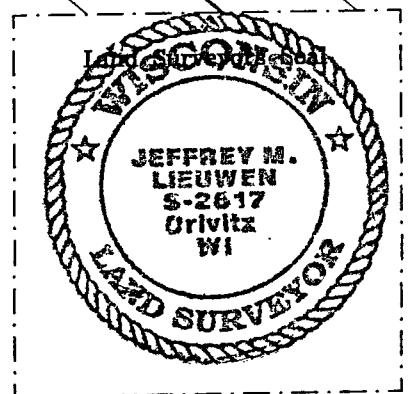
⊙ = Location

FOREST CO SURVEYOR
FILE # 351323-2011/213
DATE _____

JEFFREY M. LIEUWEN RLS 2617

I, (type or print name) certify that the corner location shown on this record was determined by me or under my direction and control and that this U.S. Public Land Survey Monument Record is correct and complete to the best of my knowledge and belief.

[Signature]
Signature _____ Date DEC 13, 2011



Index No. _____

Quarter Corner, Sections 22 & 23, T35N-R13E

In May of 2008, we were hired by Cary Chmielewski to survey his parcel in Government Lot 1, Section 23, T35N-R13E, Town of Lincoln, Forest County, Wisconsin. Chmielewski's west line being the west line of Government Lot 1. In September 2007, Jeffrey L. DeMuth of MSA surveyed the Keberlein property located in Government Lot 1, Section 22, Keberlein's east line being Chmielewski's west line. The DeMuth survey places Keberlein's east line through Chmielewski's cabin.

As we started our research, Chmielewski provided us with a copy of a "Keith & Hiles Lumber Company" (K & H) map from 1908, at that time not on file with Forest County. With additional research to include surveys of record, monument records, deeds and a 1971 survey by Arvin M. Hess, establishing Chmielewski's south, east and north boundaries, this survey looked cut and dried, until we started comparing distances of record with the K & H map. This brought the validity of the Quarter Corner between Sections 22 & 23 into question.

In 1965, Neal Sperhake, surveyor for Kimberly Clark Corp found a 1-inch pipe with 2 B.T.'s, noting that B.T.'s are "no longer than 10 years old" (7" poplar & 5" basswood). Sperhake's position went unquestioned until now, except, possible by Sperhake himself. In reading Sperhake's history, I feel he is trying to talk himself into this position and with no better option (or mapping), he accepted the 1 inch pipe. Sperhake's Quarter Corner's is 136 feet east of a line from the Meander Corner to the Southwest Corner Section 23. The distance from the found 1 1/4 well point at the Center-of-Section 22, to Sperhake's Corner is 2862 feet compared to K & H's distance of 2724.6 feet. As well as an angular difference (West Quarter Corner - Sperhake's Corner - Meander Corner) of 81°47'32" compared to K & H's angle of 86°46'. This caused more concern to Sperhake's Quarter Corner.

We looked at several options for resetting this corner and settled on setting it on a line from the Meander Corner to Southwest Corner of Section 23 at K & H's distance from said Meander Corner. This position puts the found 1 1/4 inch well point at the Center-of-Section 22, 0.51 feet south of the east - west quarter line and an angular comparison of 86°24'02" measured, 86°46' K & H record. We dug at this position and found evidence of a rotted cedar. Note area is upland, cut over hard woods, 5 to 10 feet south of roadway. Moving a Quarter Corner without strong original evidence is something not to be taken lightly. With that said, we feel we have no choice but to reset this corner based on the Keith & Hiles Lumber Company map.

