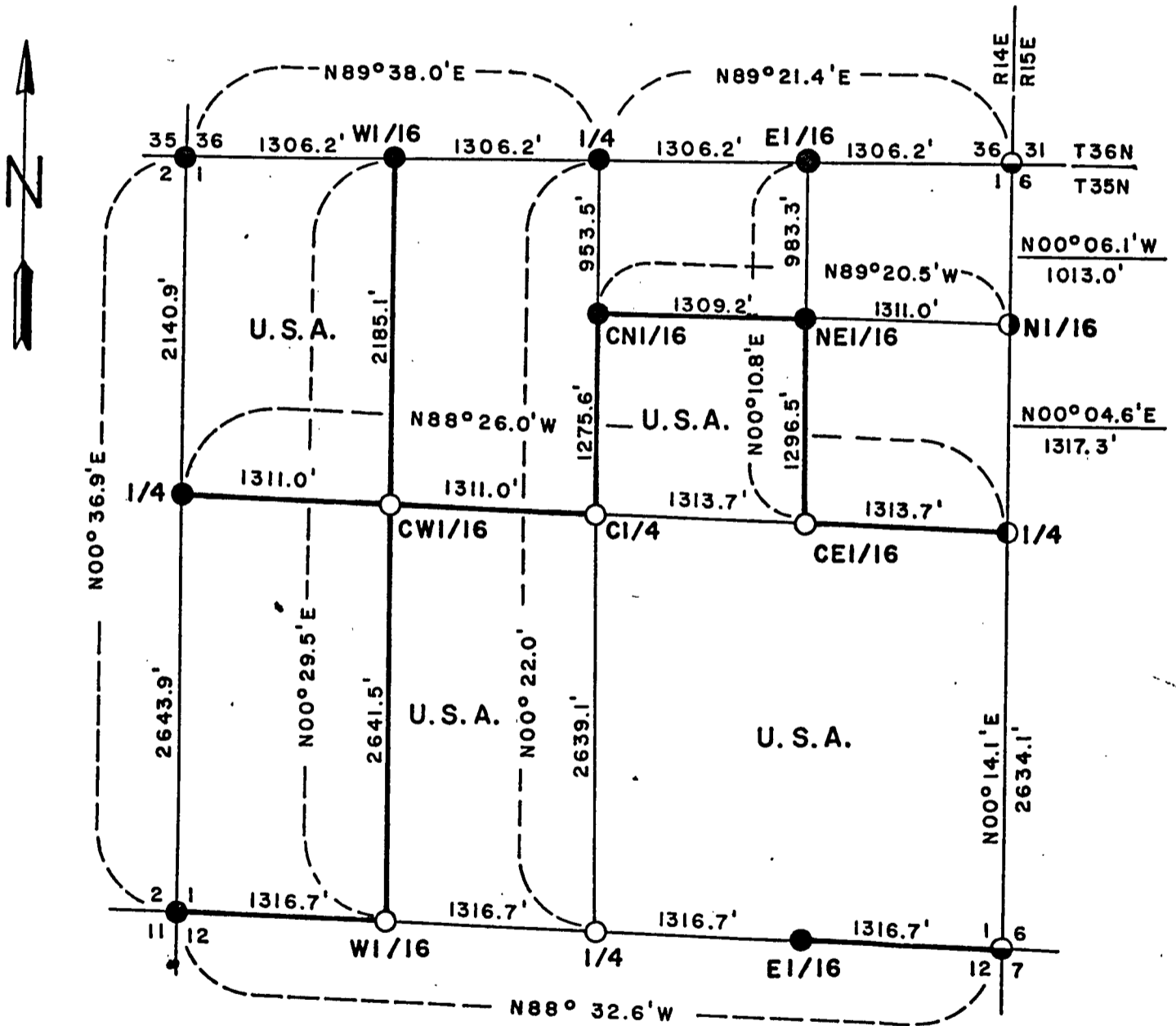


FOREST CO CLERK
 FILE # 351401-19820108
 DATE _____ BY _____

CERTIFIED
 PLAT OF SURVEY
 U.S. Government Land

Sheet 1 of 5

Being the SE1/4, E1/2SW1/4, W1/2NW1/4 and SW1/4NE1/4 all in Section 1
 Township 35 North, Range 14 East, Fourth Principal Meridian
 FOREST COUNTY, WISCONSIN



LEGEND

- 2 inch inside diameter brass capped galvanized iron pipe 3 feet long
- 2.5 inch diameter capped aluminum pipe 5 feet long
- ◐ 2 inch inside diameter galvanized iron 30 inches long
- ◑ 1.25 inch diameter iron pin 1 foot long with 2 inch square head
- ◒ 0.75 inch diameter bolt 1.5 feet long with 1 inch square head
- Marked boundary line - U.S.A.
- U.S. A. U.S. Government land

FOREST CO CLERK
 RECEIVED

JAN 8 1982

Dora C. James

CONVERSION FACTOR:
 Feet to Meters - 0.304801
 Meters to Feet - 3.280833

SURVEY NOTES

This survey was made by the U.S. Department of Agriculture, Forest Service, for the subdivision of section 1, township 35 north, range 14 east, Fourth Principal Meridian, Forest County, Wisconsin.

The original Government subdivision survey of this township was made in 1859.

The U.S. Government acquired title to lands in section 1 in 1935, 1938, 1939 and in 1950.

The corner positions recovered, restored, and established by this survey are marked and referenced by the monument described in the map legend.

The bearings between corner positions are true bearings as determined by reference to solar observations. The accuracy of the perimeter traverse control for corner restoration and establishment was 1.2 feet in latitude and 0.8 foot in departure.

The field survey notes and a copy of the plat of survey are on file in the Forest Supervisor's office at Rhinelander, Wisconsin.

Corners Recovered1. Section Corner to Sections 1-2-35-36 Twps. 34-35N

Corner position documented on corner certificate No. 91353 filed in the County records on April 13, 1966. Corner was recovered from the evidence of the original Government Survey.

Corner references established in 1966:

Basswood 10"	N40°	8.45 feet
Yellow Birch 9"	S22°E	26.69 feet
Maple 4"	S22°W	19.56 feet
Maple 7"	N48°W	34.18 feet

2. Section Corner to Sections 1,2,11,12

Corner position recovered as being a 1 inch diameter iron pipe in a mound of stone next to fence corner.

Corner references:

Red Pine 15"	S14°E	45.94 feet
Aspen 10"	N81°W	15.52 feet
Sign Post	Southeast	0.50 feet

3. Section Corner to Sections 1-6-7-12 Rs. 14-15E

Corner position recovered as being a 2 inch inside diameter galvanized iron pipe, 30 inches long, 14 feet West of Highway 32 centerline.

Corner references:

Reference Monument	N88°32.6'W	86.00 feet
--------------------	------------	------------

Corner references established in 1965:

Witness Corner Monument East		114.00 feet
------------------------------	--	-------------

4. Section Corner to Sections 1-6-31-36 Twps. 34-35N, Rs. 14-15E

Corner position documented on corner certificate No. 111432 filed in the County records on May 13, 1977. Corner was recovered from evidence of 1923 highway survey. Corner references established in 1965.

Witness Corner Monument	East	128.00 feet
-------------------------	------	-------------

5. Quarter Corner to Sections 1-36 Twps. 34-35N.

Corner position documented on corner certificate No. 111430 filed in the county records on May 13, 1977. Corner was set at midpoint between the northeast corner and the northwest corner of Section 1 and the center of east-west road.

Corner references established in 1977.

Maple 7"	N41°E	62.41 feet
Maple 6"	S28°W	57.95 feet
Southeast corner of house bears N42°W, 90.46 feet		

6. Quarter Corner to Sections 1-6 Rs. 14-15E

Corner position recovered as being a 3/4 inch diameter bridge bolt, 1.5 feet long, with a 1 inch square head, 9 feet west of Highway 32 center line.

Corner references established in 1965:

Witness Corner Monument	East	109.00 feet
-------------------------	------	-------------

7. North Sixteenth Corner to Sections 1-6 Rs. 14-15E

Corner position recovered as being an iron pin, 1 1/4 inch diameter, 1 foot long, with a 2 inch square head, 8 feet west of Highway 32 centerline.

Corner references established in 1965:

Witness Corner Monuemnt	East	108.00 feet
Spruce 9"	N72°E	22.28 feet
Balsam 6"	S22°E	30.12 feet

8. East Sixteenth Corner to Sections 1-36 Twps. 35-36N

Corner position documented on corner certificate No. 111431 filed in the county records on May 13, 1977. Corner was set at midpoint between the northeast section corner and the north quarter corner of Section 1.

Corner references established in 1977:

Power Pole, 3614-36R21	N62°E	56.63 feet
Northwest corner of house	South	54.30 feet

9. West Sixteenth Corner to Sections 1-36 Twps. 35-36N

Corner position documented on corner certificate No. 111429 filed in the County records May 13, 1977. Corner was set at midpoint between the Northwest section corner and the North quarter corner of Section 1.

Corner references established in 1977:

Hemlock 7"	S35°E	44.40 feet
Maple 8"	S33°W	54.63 feet

Corners Restored1. Quarter Corner to Sections 1-2.

Corner position restored on line between the northwest corner and the southwest corner of Section 1 and at the intersection of the east-west center line of Section 2.

Corner references:

Red Pine 7"	N5°E	27.77 feet
Red Pine 5"	N64°	37.94 feet
Sign Post	Northeast	0.50 feet

2. Quarter Corner to Sections 1-12.

Corner position restored at midpoint and on line between the southwest corner and the southeast corner of section 1.

Corner references:

Spruce 7"	N35°W	11.90 feet
Cedar 7"	S58°E	~53.00 feet
Sign Post	West	0.50 feet

Corners Established1. Center Quarter Corner:

Corner position established at the intersection of the straight lines between opposing quarter corners on the perimeter of section 1.

Corner references:

Cedar 5"	N52°E	10.74 feet
Cedar 6"	N37°W	7.24 feet
Sign Post	Southeast	0.50 feet

2. East Sixteenth Corner to Sections 1-12.

Corner position established at midpoint and on line between southeast corner and south quarter corner of section 1.

Corner references:

Cherry 9"	N25°E	56.42 feet
Red Pine 6"	S36°W	66.39 feet
Balsam 4"	N63°W	99.18 feet
Sign Post	West	0.30 feet

3. West Sixteenth Corner to Sections 1-12.

Corner position established at midpoint and on line between southwest corner and south quarter corner of section 1.

Corner references:

Cedar 8"	S60°W	22.65 feet
Spruce 10"	S20°E	36.76 feet
Sign Post	Southeast	0.50 feet

4. Center East Sixteenth Corner.

Corner position established at midpoint and on line between center quarter corner and east quarter corner of section 1.

Corner references:

Spruce 6"	S40°E	22.23 feet
Cedar 8"	S24°W	35.61 feet
Sign Post	Southwest	0.50 feet

5. Center West Sixteenth Corner

Corner position established at midpoint and on line between center quarter corner and west quarter corner of section 1.

Corner references:

Cedar 6"	N57°E	9.38 feet
Cedar 6"	S25°E	6.10 feet
Sign Post	Southwest	0.50 feet

6. Center North Sixteenth Corner

Corner position established at proportionate distance and on line between center quarter corner and north quarter corner of section 1.

Corner references:

Maple 23"	S68°E	73.40 feet
Red Pine 7"	S72°W	36.43 feet
Sign Post	Southeast	0.50 feet

7. Northeast Sixteenth Corner

Corner position established at intersection of straight lines between opposing sixteenth corner positions on the perimeter of the northeast quarter of section 1.

Corner references:

Cedar 6"	S68°E	9.70 feet
Balsam 9"	N32°W	6.35 feet
Sign Post	Southwest	0.50 feet

SURVEYOR'S AFFIDAVIT

State of Wisconsin)
County of Forest) SS

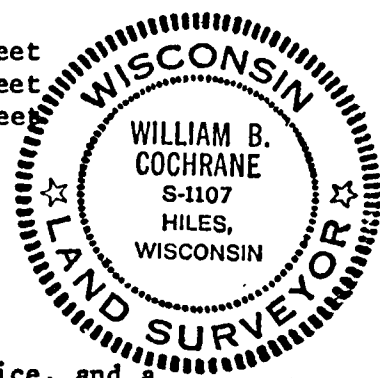
I, William B. Cochrane, Cadastral Surveyor, U.S. Forest Service, and a registered land surveyor in the State of Wisconsin, hereby certify that I have surveyed and subdivided section 1, township 35 north, range 14 east, Fourth Principal Meridian, State of Wisconsin.

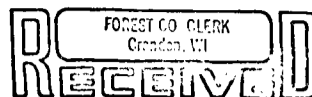
The plat map and the notes herewith are a correct representation of the land surveyed and divided. I have surveyed and subdivided said section in accordance with the rules for the survey of the public lands and with the statutes of the State of Wisconsin.

William B. Cochrane

Cadastral Surveyor, U.S. Forest Service
R.L.S. State of Wisconsin
Certificate S-1107

Date of Survey: 1980





RS-7150-11 (9/1/66)

CERTIFIED LAND CORNER RESTORATION JAN 8 1982

State of Wisconsin }
County of Forest } ss.

Dora C. James

I William B. Cochrane, do hereby certify that on the 8th day of May, 1980, I found evidence of the West quarter corner of Section 2, Township 35 North, Range 14 East, Fourth Principal Meridian, as described hereon; and that from this evidence I established a new monument and accessories as described hereon to perpetuate the original location of this corner:

Description of original monument and accessories and subsequent restorations:

Surveyed in 1859 by James McBride.
South corrected between Sections 2 and 3, 34.50 chains set 1/4 section post.
Aspen, 8 inches, N26W, 27 links
Aspen, 8 inches, N62E, 16 links.

Description of corner evidence found:

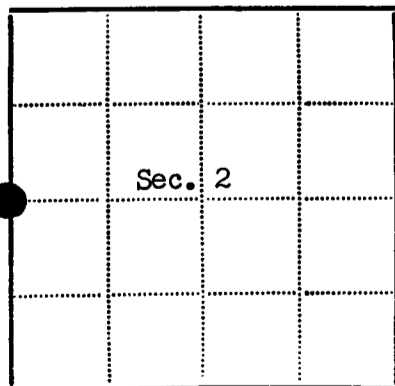
1 inch diameter iron pipe, 24 inches long buried about 12 inches below the surface of the road. The pipe was found at the intersection of an East-West town road and a gravel road North. An East-West fence line is South of the pipe 25 feet. The roads have been in place since at least 1939. I accept the pipe as the best available evidence of the corner.

Description of monument and accessories I established to perpetuate the location of this corner:

I replaced the iron pipe with a 2 1/2 inch diameter, aluminum monument, 30 inches long, with an aluminum cap stamped:
T35N, R14E, 1/4, S2, S3, 1980, S-1107

Blazed and scribed the following new bearing trees:

Power Pole, N64E, 48.79 feet
Oak, 14 inches, S24E, 45.98 feet
Power Pole, # 3514-3R21, S54W, 36.30 feet
Power Pole, # 3514-3E21, N45W, 36.23 feet.



Corner monument restored
-

Resident witnesses

Dated at Laona Wisconsin, this 4th day of June 1980

Signature William B. Cochrane Title Land Surveyor
(County Surveyor, Registered Land Surveyor, or other duly authorized official)

Surveyors Registration No. S-1107

Office of County of

I hereby certify that the within instrument was filed in this office for record on the day of 19, and was filed in Book No. Page No. of County Records.

Signature Title

Township 35 North, Range 14 East, Section 2, Index No. G-17, Page No.