

County Clerk

FORM NO. 985-A

H C Miller Company

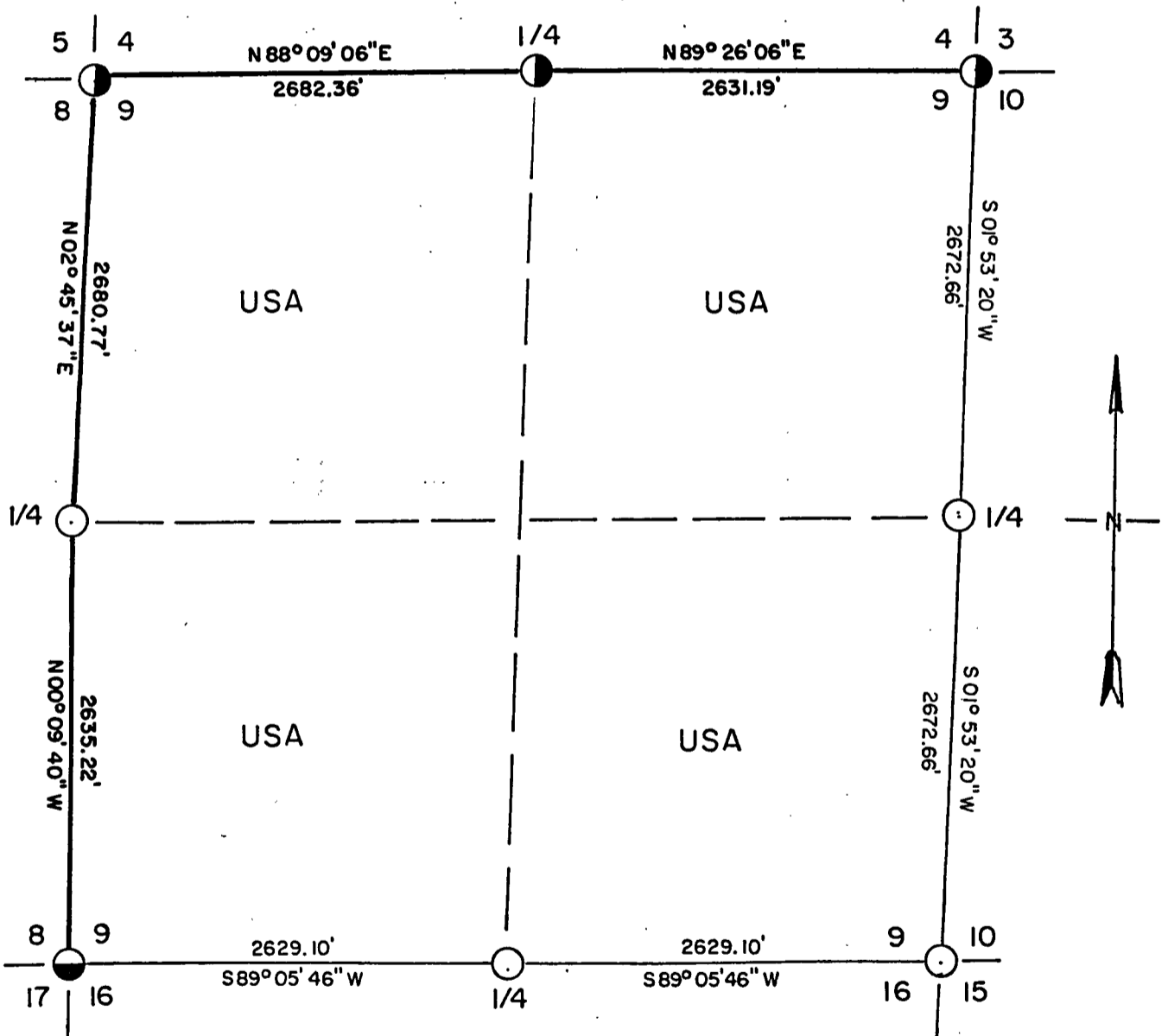
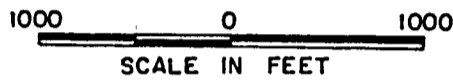
Stock No. 26273

FOREST CO SURVEYOR
FILE # 351409-19850807
DATE _____ BY _____

Sheet one of four

PLAT OF SURVEY U.S. GOVERNMENT LAND

All of Section 9
Township 35 North, Range 14 East, Fourth Principal Meridian
FOREST COUNTY, WISCONSIN.



LEGEND

- 2" Diameter Aluminum monument, 30" long
- ◐ 2" Diameter Aluminum monument with cap stamped for corner
- ◑ 2" Diameter iron pipe with brass cap stamped for corner

— Marked Boundary Lines of US Government Lands

CONVERSION FACTOR:

Feet to Meters = 0.304801

Meters to Feet = 3.280833

Stock No. 26273

Sheet two of four

SURVEY NOTES

This survey was made by AARON ASSOCIATES of Oconto Falls, Wisconsin under contract with the USDA, Forest Service, for the purpose of recovering and restoring corners on the perimeter of Section 9, and for marking and locating the boundaries of US Government Lands on their perimeter in Section 9, Township 35 North, Range 14 East, Fourth Principal Meridian, Forest County, Wisconsin.

The Government lands in this section were acquired in the mid 1930s.

The original government survey of this township was made in 1859.

The corners recovered, restored, and established by this survey are marked by monuments described in the map legend.

The corner positions established were located to an accuracy of one part in 10,000.

The bearings between the corner positions are true bearings as determined by solar observation.

The field notes of this survey and a copy of the Plat map are on file in the Forest Supervisor's Office at Rhinelander, Wisconsin.

CORNERS RECOVERED AND RESTOREDL. Section corner to Sections 4-5-8-9, T35N, R14E.

Located a 2" iron pipe with brass cap stamped for corner set by Jean Resvick, RLS, in 1975. Certificate on file.

Corner references:

Yellow Birch	25"	N 54 E	8.45'	(original bearing tree)
Herlock	7"	S 50 E	16.33'	
Hemlock	9"	S 09 W	14.45'	
Steel Sign Post		SE	0.50'	

2. Section corner to Sections 3-4-9-10, T35N, R14E.

Located a 2" diameter iron pipe with brass cap stamped for corner set by Jean Resvick, RLS, in 1978. Certificate on file.

Corner references:

Maple	9"	N 79 E	9.98'
Maple	6"	S 29 E	9.48'
Maple	5"	S 54 W	4.81'
Ash	9"	N 05 W	38.01'
Steel Sign Post		North	

3. Section corner to Sections 9-10-15-16, T35N, R14E.

Computed double proportionate position for this corner from the south quarter corner of Section 10, the northwest corner of Section 10, the southwest corner of Section 9, and the west quarter corner of Section 15. Located the corner position within 5 feet of this double proportionate measure from three of the original bearing trees found. They were stumps at ground level of the Hemlock N 58 W, 14.52'; Hemlock N 51 E, 33.00' and Hemlock S 32 W, 5.94'.

Corner references:

Stock No. 26273

Sheet three of four

Hemlock	6"	N 25 E	41.92'
Balsam Fir	4"	S 30 E	62.00'
Sugar Maple	6"	S 04 W	154.23'
Yellow Birch	6"	S 41 W	116.72'
Steel Sign Post		West	0.90'

4. Section corner to Sections 8-9-16-17, T35N, R14E.

Located a 2" diameter aluminum monument with cap stamped for corner set by Milo Stefan, RLS. Certificate on file.

Corner references:

Yellow Birch	12"	S 11 E	45.99'
Sugar Maple	7"	S 33 W	42.76'
Sugar Maple	6"	N 30 W	15.29'
Sugar Maple	6"	N 25 E	8.82'
Steel Sign Post		North	1.00'

5. Quarter corner to Sections 8-9, T35N, R14E.

Located a 1 $\frac{1}{4}$ " iron pipe in rock pile around old cedar post. 4"x4" scribed post lay alongside with three trees blazed facing the monument. An old blazed line ran south from this monument to the southwest corner of section 9. I accepted this pipe as the corner perpetuation.

Corner references:

Sugar Maple	5"	N 08 W	10.58'
Sugar Maple	8"	S 73 E	23.90'
Sugar Maple	7"	N 66 W	11.35'
Steel Sign Post		South	1.80'

6. Quarter corner to Sections 4-9, T35N, R14E.

Located a 2" diameter iron pipe with brass cap stamped for corner set by Jean Resvick, RLS in 1975. Certificate on file.

Corner references:

Yellow Birch	13"	N 56 E	23.24'
Hemlock	9"	S 53 W	10.67'
Steel Sign Post		North	0.50'

7. Quarter corner to Sections 9-10, T35N, R14E.

This corner position was determined to be lost and was set by single proportionate measurement from the opposite section corners.

Corner references:

Sugar Maple	6"	N 48 E	16.38'
Sugar Maple	7"	S 28 E	6.86'
Sugar Maple	6"	S 66 W	8.94'
Sugar Maple	8"	N 43 W	11.28'
Steel Sign Post		North	1.25'

Stock No. 26273

Sheet four of four

8. Quarter corner to Sections 9-16, T35N, R14E.

Could not find any evidence of this corner location. I determined it to be lost and set it by single proportionate measurement.

Corner references:

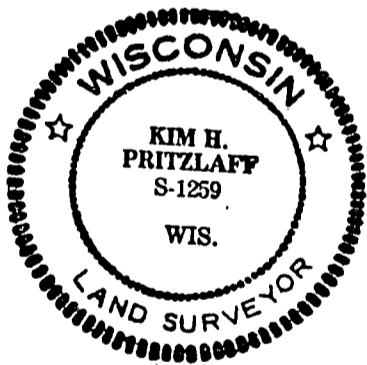
Sugar Maple	5"	N 52 E	20.43'
Sugar Maple	6"	S 40 E	6.55'
Sugar Maple	3"	S 52 W	13.50'
Sugar Maple	8"	N 12 W	19.84'
Steel Sign Post		North	1.30'

SURVEYOR'S AFFIDAVIT

STATE OF WISCONSIN)
OCONTO COUNTY)SS

I, Kim H Pritzlaff, Registered Land Surveyor in the State of Wisconsin hereby certify: that I have surveyed Section 9, Township 35 North, Range 14 East, Fourth Principal Meridian, Forest County, Wisconsin.

The field notes and Plat map herewith are a true and correct representation of the land surveyed. That I have surveyed said Section 9 in accordance with the rules of survey of the public lands and with the State Statutes of the State of Wisconsin.



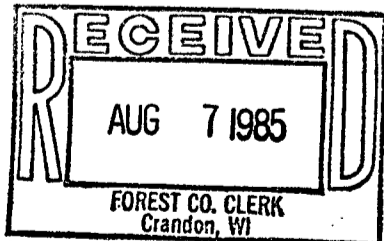
Kim H Pritzlaff

Kim H Pritzlaff, RLS No. 1259
AARON ASSOCIATES
Oconto Falls, Wisconsin

Date of survey: 1985

Plat ready for filing:

Dale B. Stange
District Ranger



Dora C. James
Forest Co. Clerk