

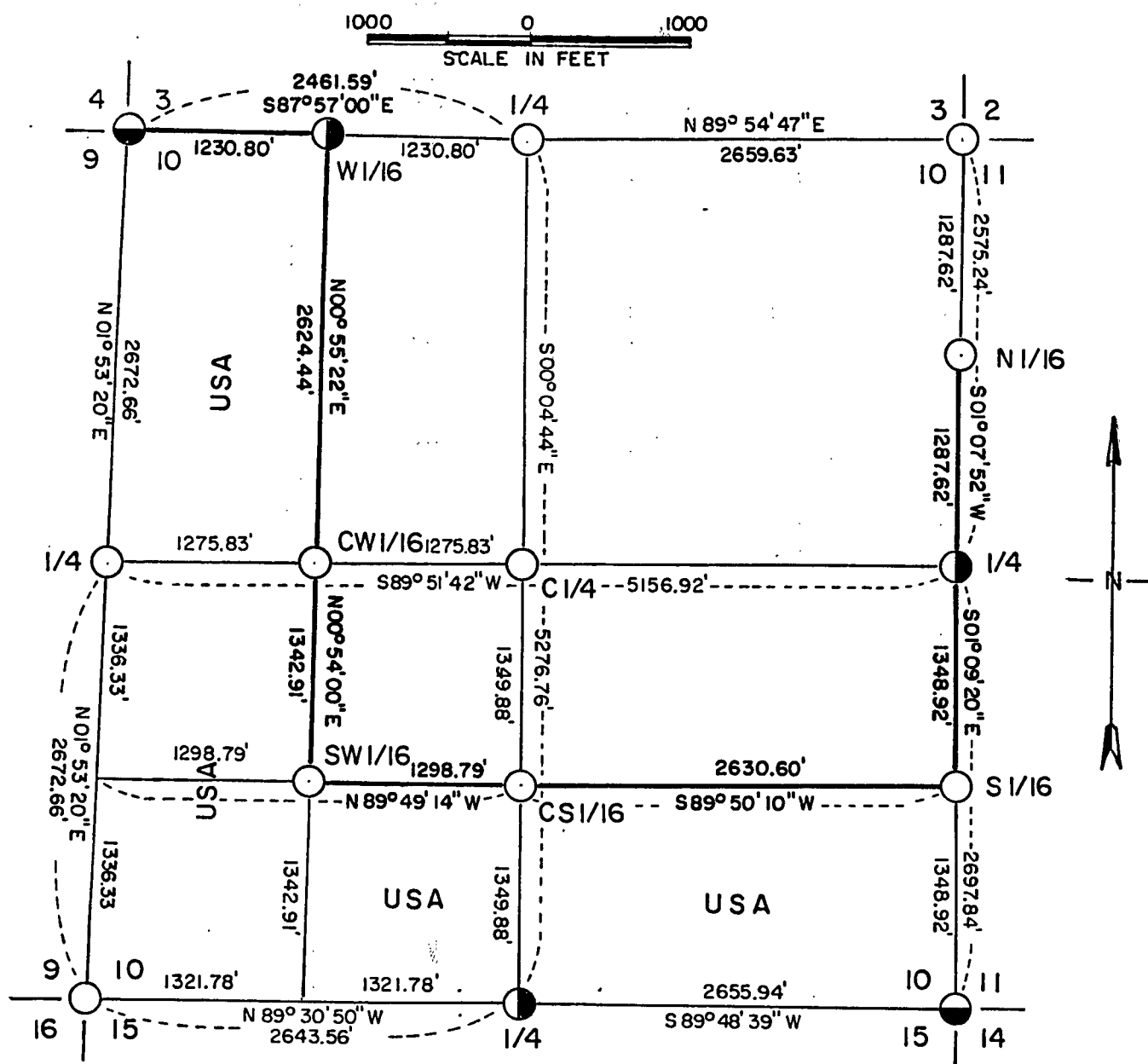
Stock No. 26273

County Clerk

Sheet one of five

PLAT OF SURVEY U.S. GOVERNMENT LAND

Being W1/2-NW1/4, S1/2-SE1/4, W1/2-SW1/4
and SE1/4-SW1/4 all in Section 10
Township 35 North, Range 14 East, Fourth Principal Meridian.
FOREST COUNTY, WISCONSIN.

**LEGEND**

- 2" Diameter Aluminum monument, 30" long
- ◐ 2" Diameter Aluminum monument, 60" long
- ◑ 2" Diameter iron pipe with brass cap stamped for corner
- Marked Boundary Lines of US Government Lands

CONVERSION FACTOR:

Feet to Meters = 0.304801
Meters to Feet = 3.280833

FOREST CO SURVEYORFILE # 351410-19850807

DATE _____ BY _____

Stock No. 26273

Sheet two of five

SURVEY NOTES

This survey was made by AARON ASSOCIATES of Oconto Falls, Wisconsin under contract with the USDA, Forest Service, for the purpose of restoring and establishing corners on the perimeter of Section 10, for establishing subdivisional corners within Section 10, and for locating and marking the boundaries of US Government Lands on their perimeter and within Section 10, Township 35 North, Range 14 East, Fourth Principal Meridian, Forest County, Wisconsin.

The US Government Lands in this section were acquired in the mid 1930s.

The original government survey of this township was made in 1859.

The corner positions recovered, restored, and established by this survey are marked by monuments as described in the map legend.

The bearings between the corner positions are true bearings as determined by solar observation.

The corner positions established were located to an accuracy of one part in 10,000.

The field notes of this survey and a copy of the Plat map are on file in the Forest Supervisor's Office at Rhinelander, Wisconsin.

CORNERS RECOVERED AND RESTORED1. Section corner to Sections 3-4-9-10, T35N, R14E.

Located a 2" diameter iron pipe with brass cap stamped for corner set by Jean Resvick, RLS, in 1978. Certificate on file.

Corner references:

Maple	9"	N 79 E	9.98'
Maple	6"	S 29 E	9.48'
Maple	5"	S 54 W	4.81'
Ash	9"	N 05 W	38.01'
Steel Sign Post		North	

2. Section corner to Sections 2-3-10-11, T35N, R14E.

Located a three way fence intersection at this corner location. Double proportionate measurement placed corner 100 feet to the northeast. Area residents have been using the fence intersection for years as the corner location. I accepted the fence corner as the corner, after search for bearing trees proved unsuccessful.

Corner references:

Cherry	8"	N 52 W	18.08'
Tamarack	12"	S 61 E	79.68'
White Pine	18"	S 18 E	76.20'
Cherry	10"	North	35.60'
Steel Sign Post		South	2.10'

3. Section corner to Sections 10-11-14-15, T35N, R14E.

Located a 2" iron pipe with brass cap stamped for corner set by Jean Resvick, RLS, in 1962. Certificate on file.

Corner references:

Elm	6"	N 75°30'W	28.62'
Elm	4"	N 75°30'E	28.95'
Elm	6"	S 49E	37.75'
Sugar Maple	4"	S 30 W	15.50'
Wood sign post		East	

Stock No. 26273

Sheet three of five

4. Section corner to Sections 9-10-15-16, T35N, R14E.

Computed double proportionate position for this corner from the south quarter corner of Section 10, the northwest corner of Section 10, southwest corner of 9, and the west quarter corner of Section 15 all of T35N, R14E and found the three Hemlock Bearing trees within 5 feet of the computed position. The Hemlock N 58W, 14.52'; Hemlock N 51E, 33.00'; and the Hemlock S 32 W, 5.94' were all stumps at ground level.

Corner references:

Hemlock	6"	N 25 E	41.92'
Balsam Fir	4"	S 30 E	62.00'
Sugar Maple	6"	S 04 W	154.23'
Yellow Birch	6"	S 41 W	116.72'
Steel Sign Post		West	0.90'

5. Quarter corner to Sections 9-10, T35N, R14E.

This corner was determined to be lost and was set by single proportionate measurement. The two Sugar Maple trees as bearing trees were not found.

Corner references:

Sugar Maple	6"	N 48 E	16.38'
Sugar Maple	7"	S 28 E	6.86'
Sugar Maple	6"	S 66 W	8.94'
Sugar Maple	8"	N 43 W	11.28'
Steel Sign Post		North	1.25'

6. Quarter corner to Sections 3-10, T35N, R14E.

Located a three way fence intersection at this corner location which agreed with the swamp call to the west measuring 400 ft. Original corner evidence was destroyed by cultivation. I accepted the fence intersection as corner perpetuation.

Corner references:

Balsam Fir	6"	N 27 E	40.64'
Sugar Maple	22"	S 64 E	79.20'
Elm	10"	S 76 W	67.58'
Sugar Maple 2	12"	N 28 W	26.40'
Steel Sign Post		N 17 E	1.20'

7. Quarter corner to Sections 10-11, T35N, R14E.

Located a squared 4" cedar post 5 ft long in a north-south fence line. From this post I recovered the stump remains of the 12" Hemlock N 14 W, 25.08'. I monumented this corner based on the original Hemlock stump verification of the wood post.

Corner references:

Spruce	8"	N 29 E	7.80'
Hemlock	11"	S 37 E	35.90'
Hemlock	6"	N 88 W	28.94'
Yellow Birch	9"	N 55 W	24.79'
Steel Sign Post		East	0.81'

Stock No. 26273

Sheet four of five

8. Quarter corner to Sections 10-15, T35N, R14E.

Located a 1½" iron pipe next to an old 4"x 4" cedar post from which the two Spruce bearing trees were recovered under the swamp grass cover. The bearing trees were stumps under the swamp cover. Corner references:

Cedar	8"	South	174.74'
Cedar	6"	S 12 W	194.59'
Cedar	8"	S 21 W	247.46'
Steel Sign Post		North	1.30'

CORNERS ESTABLISHED9. Center quarter corner of Section 10, T35N, R14E.

Set this corner position at the intersection point of the north-south and east-west quarter lines of said Section 10. Corner references:

Red Pine	8"	N 29 W	25.66'
Red Pine	10"	N 60 E	41.90'
Sugar Maple	10"	S 54 E	43.95'
Steel Sign Post		North	2.00'

10. West sixteenth corner between Sections 3-10, T35N, R14E.

Set this corner at midpoint between the northwest and north quarter corners of Section 10. Corner references:

Spruce	8"	N 51 W	33.36'
Spruce	5"	S 67 W	17.70'
Spruce	6"	S 30 W	20.35'
Steel Sign Post		South	2.00'

11. North sixteenth corner between Sections 10-11, T35N, R14E.

Set this corner at midpoint between the northeast and east quarter corners of said Section 10. Corner references:

Elm	6"	N 89 W	57.33'
Cherry	5"	S 66 E	19.75'
Cherry	5"	S 08 E	18.50'
Steel Sign Post		South	1.20'

12. Center west sixteenth corner of Section 10, T35N, R14E.

Set this corner at midpoint between the center and west quarter corners of Section 10, T35N, R14E. Corner references:

Sugar Maple	12"	N 46 W	21.77'
Sugar Maple	8"	N 07 W	50.28'
Casswood	12"	N 22 E	49.40'
Steel Sign Post		West	1.30'

Stock No. 26273

Sheet five of five

13. Southwest sixteenth corner of Section 10, T35N, R14E.

Set this corner position at the intersection of the north-south and east-west sixteenth lines in the southwest quarter of Section 10.
Corner references:

Red Pine	5"	S 68 W	15.95'
Red Pine	4"	N 08 W	20.67'
Red Pine	4"	N 50 E	11.53'
Steel Sign Post		East	1.20'

14. Center south sixteenth corner of Section 10, T35N, R14E.

Set this corner at midpoint between the center quarter and south quarter corners of said Section 10.
Corner references:

Tamarack	10"	S 60 W	126.59'
Tamarack	12"	S 07 W	150.74'
Elm	16"	S 82 E	218.86'
Steel Sign Post		N 78 E	1.30'

15. South sixteenth corner between Sections 10-11, T35N, R14E.

Set this corner at midpoint between the east quarter and southeast section corner of Section 10.
Corner references:

Spruce	10"	N 69 E	34.05'
Spruce	10"	S 74 E	32.55'
Basswood	6"	N 84 W	20.09'
Steel Sign Post		West	2.40'

SURVEYOR'S AFFIDAVIT

S TATE OF WISCONSIN)
OCO NTO COUNTY)SS

I, Kim H Pritzlaff, Registered Land Surveyor in the State of Wisconsin hereby certify: that I have surveyed and subdivided Section 10, Township 35 North, Range 14 East, Fourth Principal Meridian, Forest County, Wisconsin.

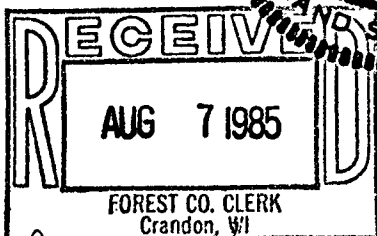
The Plat map and notes herewith are a true and correct representation of the land surveyed and divided. That I have surveyed and subdivided said Section 10 in accordance with the rules of survey of the public lands and with the Statutes of the State of Wisconsin.



Kim H. Pritzlaff
Kim H Pritzlaff, RLS No. 1259
AARON ASSOCIATES
Oconto Falls, Wisconsin

Date of survey: 1985

Plat is ready for filing: _____
District Ranger



Dora C. James
Forest Co. Clerk