

County Clerk

FORM NO. 985-A

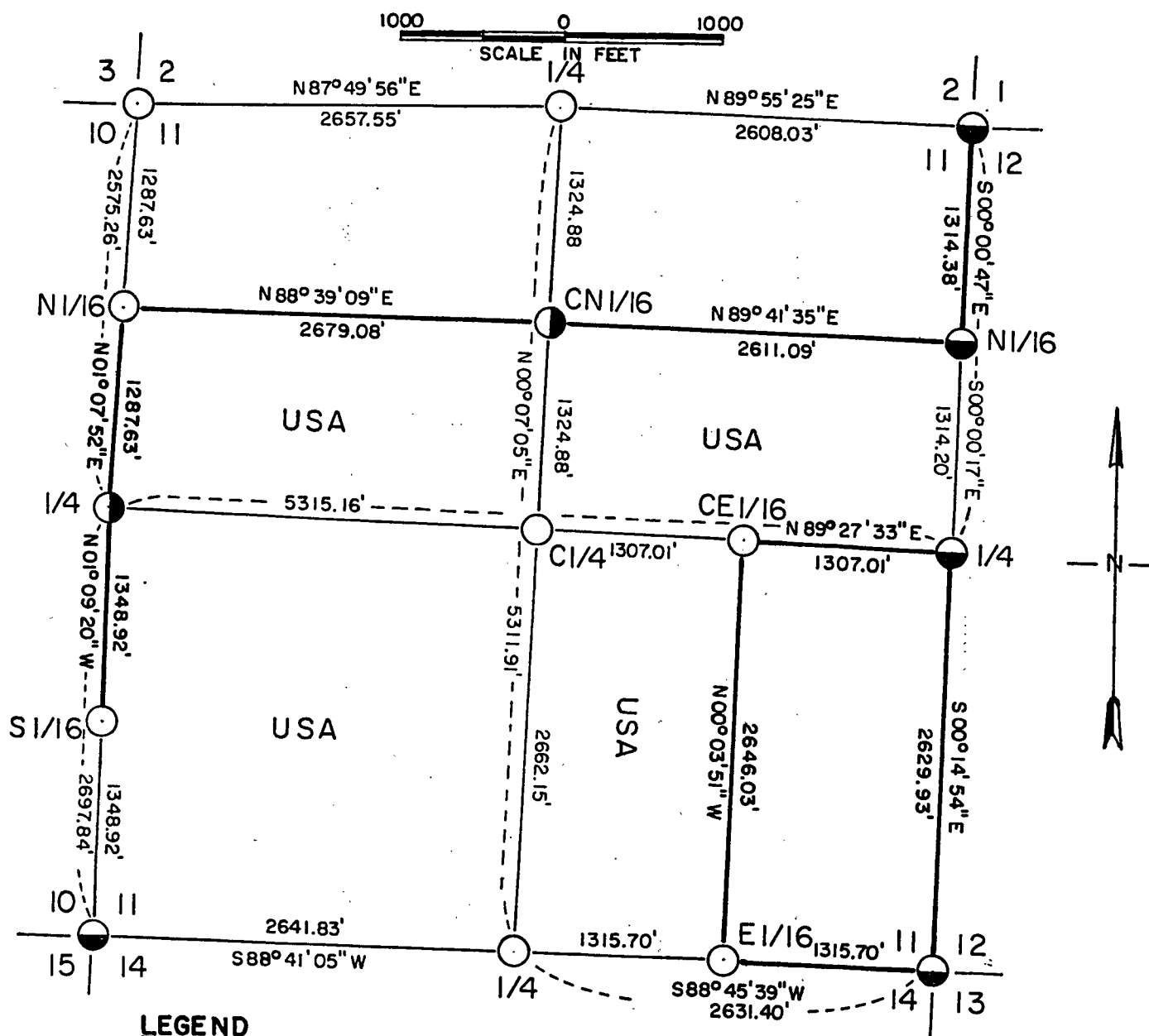
H.C. Miller Company

Stock No. 26273

Sheet one of five

PLAT OF SURVEY U.S. GOVERNMENT LAND

Being S 1/2-NW 1/4, S 1/2-NE 1/4, W 1/2-SE 1/4
and SW 1/4 all in Section 11
Township 35 North, Range 14 East, Fourth Principal Meridian
FOREST COUNTY, WISCONSIN.



LEGEND

- 2" Diameter Aluminum monument, 30" long
- ◐ 2" Diameter Aluminum monument, 60" long
- 2" Diameter iron pipe with Brass Cap stamped for corner

— Marked Boundary Lines of US Government Lands

CONVERSION FACTOR:

Feet to Meters = 0.304801
Meters to Feet = 3.280833

FOREST CO SURVEYOR

FILE # 351411-19850807

DATE _____ BY _____

Stock No. 26273

Sheet two of five

SURVEY NOTES

This survey was made by AARON ASSOCIATES of Oconto Falls, Wisconsin, under contract with the USDA, Forest Service for the purpose of recovering and restoring and establishing corners on the perimeter of Section 11, for establishing subdivisional corners within Section 11, and for locating and marking the boundaries of US Government lands on their perimeter and within Section 11, Township 35 North, Range 14 East, Fourth Principal Meridian, Forest County, Wisconsin.

The US Government lands in this section were acquired in the mid 1930s.

The original government survey of this township was made in 1859.

The corner positions recovered, restored, and established by this survey are marked by monuments described in the map legend.

The corner positions established were located to an accuracy of one part in 10,000.

The bearings between corner positions are true bearings as determined by solar observation.

The field notes of this survey and a copy of the Plat are on file in the Forest Supervisor's Office at Rhinelander, Wisconsin.

CORNERS RECOVERED AND RESTORED1. Section corner to Sections 1-2-11-12, T35N, R14E.

Located a 2" diameter iron pipe with brass cap stamped for corner set by Jean Resvick, RLS. Certificate on file, in form of Plat.
Corner references:

Red Pine	15"	S 14 E	45.94'
Aspen	10"	N 81 W	15.52'
Steel Sign Post		SE	0.50'
Two way fence intersection		West	1.00'

2. Section corner to Sections 11-12-13-14, T35N, R14E.

Located a 2" diameter iron pipe with brass cap stamped for corner set by Jean Resvick, RLS in 1974. Certificate on file.
Corner references:

Spruce	4"	N 75 E	1.68'
Spruce	9"	S 06 E	13.61'
Steel Sign Post		SE	1.0'

3. Section corner to Sections 10-11-14-15, T35N, R14E.

Located a 2" diameter iron pipe with brass cap stamped for corner set by Jean Resvick, RLS, in 1963. Certificate on file.
Corner references:

Elm	6"	N 75°30'W	28.62'
Elm	4"	N 75°30'E	28.95'
Elm	6"	S 49 E	37.75'
Sugar Maple	4"	S 30 W	35.50'
Wood sign post		East	

Stock No. 26273

Sheet three of five

4. Section corner to Sections 2-3-10-11, T35N, R14E.

Located a three way fence intersection at this corner location. Double proportionate measurement placed this corner 100 feet to the northeast. Area residents have been using this fence intersection as the corner location for years. I accepted the fence corner as the corner perpetuation after search for the bearing trees of the original government survey proved unsuccessful.

Corner references:

Cherry	8"	N 52 W	18.08'
Tamarack	12"	S 61 E	79.68'
White Pine	18"	S 18 E	76.20'
Cherry	10"	North	35.60'
Steel Sign Post		South	2.10'

5. Quarter corner to Sections 2-11, T35N, R14E.

Located a railroad spike in the centerline of a roadway and east-west fence intersection with a 1" iron pipe 21.15' west. After scrutinizing section line fences and other occupation, I accepted the railroad spike in the road centerline as the corner perpetuation.

Corner references:

Red Pine	14"	N 46 E	50.11'
Scotch Pine	5"	S 10 E	110.22'
Red Pine	12"	S 07 W	149.12'
Steel Sign Post		East	26.67'

6. Quarter corner to Sections 11-12, T35N, R14E.

Located a 2" diameter iron pipe with brass cap stamped for corner set by Jean Resvick; RLS. Certificate on file, in form of Plat.

Corner references:

Red Pine	11"	N 55 E	26.84'
Red Pine	12"	S 32 E	36.00'
Steel Sign Post		East	0.50'

7. Quarter corner to Sections 11-14, T35N, R14E.

Located a 4" squared cedar post in pile of rock 5 feet west of single proportionat distance. Found stump hole of harwood tree S 13 E at 5.94' and N 63 W at 25.74' which fit the old Maple bearing trees for this corner. I accepted the post .

Corner references:

Sugar Maple	5"	N 65 E	13.20'
Sugar Maple	3"	S 29 E	6.25'
Yellow Birch	7"	S 21 W	25.28'
Sugar Maple	8"	N 03 W	20.97'
Steel Sign Post		N 12 E	1.50'

Stock No. 26273

Sheet four of five

8. Quarter corner to Sections 10-11, T35N, R14E.

Located a squared 4" cedar post 5 ft long in a north-south fence line from which I recovered the stump remains of the original 12" Hemlock N 14 W, 25.08'. I monumented this corner based on this Hemlock bearing tree verification.

Corner references:

Spruce	8"	N 29 E	7.80'
Hemlock	11"	S 37 E	35.90'
Hemlock	6"	N 88 W	28.94'
Yellow Birch	9"	N 55 W	24.79'
Steel Sign Post		East	0.81'

CORNERS ESTABLISHED9. Center quarter corner to Section 11, T35N, R14E.

Set this corner position at the intersection point of the north-south and east-west quarter lines of said Section 11.

Corner references:

Yellow Birch	6"	S 25 E	44.24'
Sugar Maple	6"	S 07 W	13.15'
Yellow Birch	8"	S 44 W	31.90'
Steel Sign Post		East	1.50'

10. North sixteenth corner between Sections 11-10, T35N, R14E.

Set this corner at midpoint between the west quarter and northwest corners of said Section 11.

Corner references:

Elm	6"	N 89 W	57.23'
Cherry	5"	S 66 E	19.75'
Cherry	5"	S 08 E	18.50'
Steel Sign Post		South	1.20'

11. Center north sixteenth corner to Section 11, T35N, R14E.

Set this corner at midpoint between the center quarter and north quarter corners of Section 11.

Corner references:

Cedar	4"	N 34 E	97.92'
Tamarack(2)	10"	N 74 E	32.85'
Red Maple(2)	8"	S 27 W	38.18'
Steel Sign Post		West	1.40'

12. North sixteenth corner between Sections 11-12, T35N, R14E.

Set this corner at midpoint between the east quarter and northeast section corner of said Section 11.

Corner references:

Located a 2" diameter iron pipe with brass cap stamped for corner set by Jean Resvick, RLS. Certificate on file, in form of Plat.

Corner references:

See Plat of Survey on file in Forest County records.

Stock No. 26273

Sheet five of five

13. Center east sixteenth corner to Section 11, T35N, R14E.

Set this corner at midpoint between the east quarter and center quarter corners of Section 11.

Corner references:

Spruce	12"	S 43 W	22.48'
Spruce	12"	S 78 E	17.40'
Spruce	10"	N 30 E	11.29'
Steel Sign Post		South	2.20'

14. East sixteenth corner between Sections 11-14, T35N, R14E.

Set this corner at midpoint between the southeast and south quarter corners of said Section 11.

Corner references:

Spruce	10"	S 36 W	19.15'
Sugar Maple	6"	N 07 E	27.60'
Ash	4"	S 62 E	10.46'
Steel Sign Post		North	2.40'

15. South sixteenth corner between Sections 11-10, T35N, R14E.

Set this corner at midpoint between the southwest and west quarter corners of said Section 11.

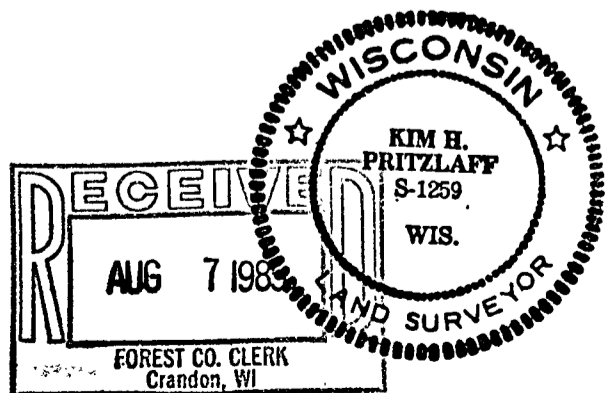
Corner references:

Spruce	10"	N 69 E	34.05'
Spruce	10"	S 74 E	32.55'
Basswood	6"	N 84 W	20.09'
Steel Sign Post		West	2.40'

SURVEYOR'S AFFIDAVITSTATE OF WISCONSIN)
OCONTO COUNTY)SS

I, Kim H Pritzlaff, Registered Land Surveyor in the State of Wisconsin hereby certify: that I have surveyed and subdivided Section 11, Township 35 North, Range 14 East, Fourth Principal Meridian, Forest County, Wisconsin.

The Plat map and notes herewith are a true and correct representation of the land surveyed and subdivided. I have surveyed and subdivided said section in accordance with the rules of survey of the public lands and with the Statutes of the State of Wisconsin.



Kim H Pritzlaff
 Kim H Pritzlaff, RLS No. 1259
 AARON ASSOCIATES
 Oconto Falls, Wisconsin

Date of survey: 1985

Plat is ready for filing:

Dale S Staege
 District Ranger

Dora C. James
 Forest Co. Clerk