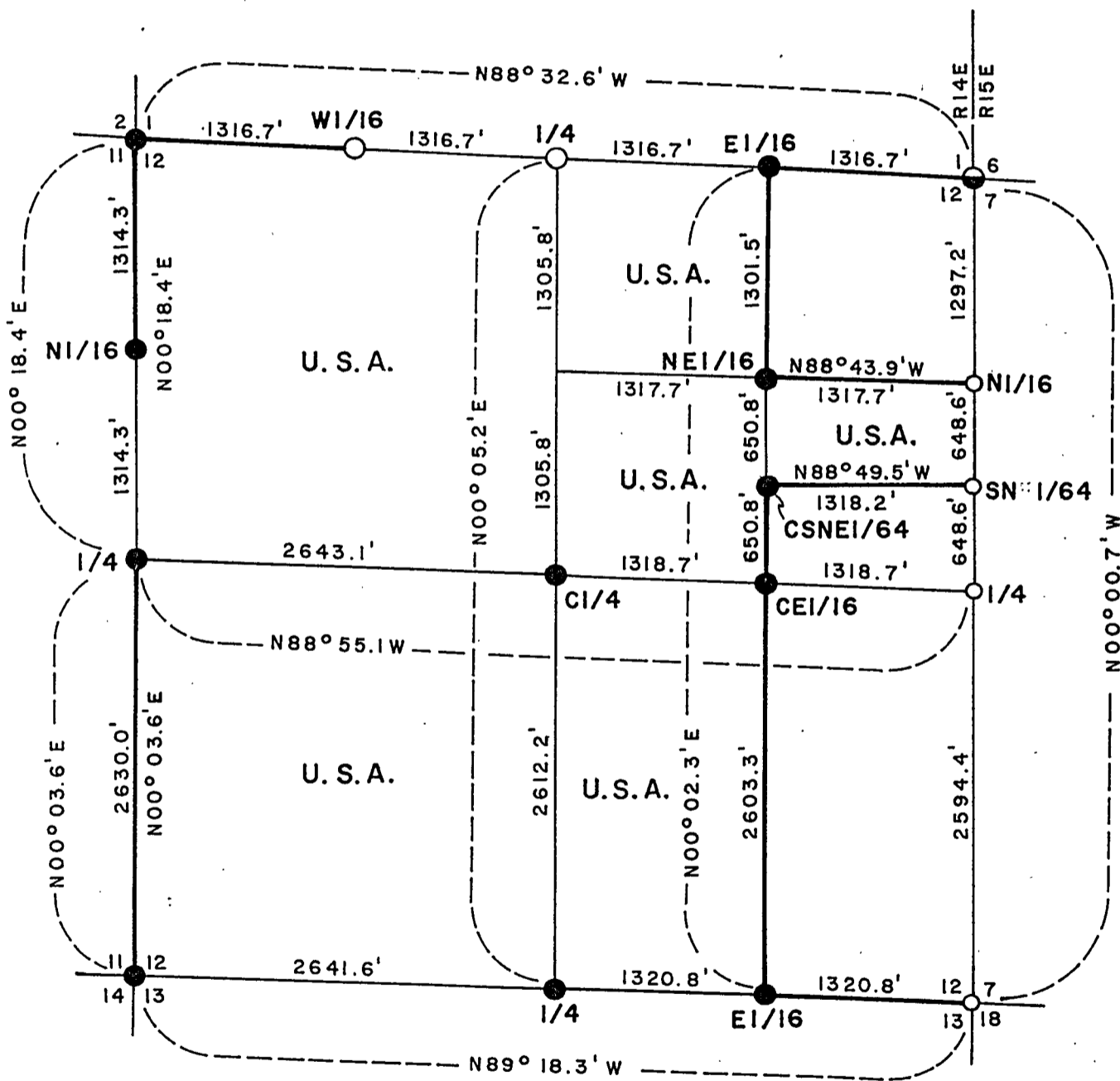
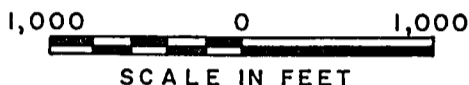


CERTIFIED
PLAT OF SURVEY
U.S. Government Land

Being the NW1/4, SW1/4, W1/2SE1/4, W1/2NE1/4 and N1/2SE1/4NE1/4
all in Section 12
Township 35 North, Range 14 East, Fourth Principal Meridian
FOREST COUNTY, WISCONSIN



LEGEND

- 2 inch inside diameter brass capped galvanized iron pipe 3 feet long
- 2.5 inch diameter capped aluminum pipe 5 feet long
- Railroad spike in road blacktop
- 2 inch inside diameter galvanized iron pipe 30 inches long
- Marked boundary line - U.S.A.
- U.S.A. U.S. Government land

CONVERSION FACTOR:
Feet to Meters - 0.304801
Meters to Feet - 3.280833

FOREST CO SURVEYOR
FILE # 351412-19831102
DATE _____ BY _____

SURVEY NOTES

This survey was made by the U.S. Department of Agriculture, Forest Service, for the subdivision of section 12, township 35 north, range 14 east, Fourth Principal Meridian, Forest County, Wisconsin.

The original Government subdivision survey of this township was made in 1859.

The U.S. Government acquired title to lands in section 12 in 1935, 1936 and in 1938.

The corner positions recovered, restored, and established by this survey are marked and referenced by the monument described in the map legend.

The bearings between corner positions are true bearings as determined by reference to solar observations. The accuracy of the perimeter traverse control for corner restoration and establishment was 1.2 feet in latitude and 0.8 foot in departure.

The field survey notes and a copy of the plat of survey are on file in the Forest Supervisor's office at Rhinelander, Wisconsin.

Corners Recovered1. Section Corner to Sections 1-2-11-12

Corner position recovered as being a 1 inch diameter iron pipe in a mound of stone next to fence corner.

Corner references:

Red Pine 15"	S14°E	45.94 feet
Aspen 10"	N81°W	15.52 feet
Sign Post	Southeast	0.50 feet

2. Section Corner to Sections 1-6-7-12 Rs. 14-15E

Corner position recovered as being a 2 inch inside diameter galvanized iron pipe, 30 inches long, 14 feet West of Highway 32 centerline.

Corner references:

Reference Monument	N88°32.6'W	86.0 feet
--------------------	------------	-----------

Corner references established in 1965:

Witness Corner Monument	East	114.0 feet
-------------------------	------	------------

3. Section Corner to Sections 11-12-13-14.

Corner position documented on corner certificate No. 105095 filed in the County records on April 5, 1974. Corner was recovered from the evidence of the original Government Survey. Corner references established in 1974:

Spruce 4"	N75°E	1.68 feet
Spruce 9"	S6°E	13.61 feet
Sign Post	Southeast	1.0 feet

4. Quarter Corner to Sections 11-12.

Corner position recovered from the evidence of the original Government Survey.

Corner references:

Red Pine 11"	N55°E	26.84 feet
Red Pine 12"	S32°E	36.00 feet
Sign Post	East	0.50 feet

Corners Restored1. Quarter Corner to Sections 1-12.

Corner position restored at midpoint and on line between the northwest corner and the northeast corner of section 12.

Corner references:

Spruce 7"	N35°W	11.90 feet
Cedar 7"	S58°E	53.00 feet
Sign Post	West	0.50 feet

2. Quarter Corner to Sections 7-12, Rs. 14-15E

Corner position restored at midpoint and on line between the northeast corner and the southeast corner of section 12.

Corner references:

Reference Monument	N88°55.1'W	89.0 feet
Basswood 10"	S69°E	39.57 feet
Maple 7"	S32°W	11.23 feet
Sign Post	Southwest	0.50 feet

3. Section Corner to Sections 7-12-13-18, Rs. 14-15E

Corner position restored on line between the northeast corner of section 12 and the southeast corner of section 13 using the distances as recorded on the Highway 32 survey of 1923 and 1939.

Corner references:

Reference Monument	N89°18.3W	98.0 feet
Maple 7"	N19°E	27.98 feet
Maple 6"	N55°W	11.37 feet

4. Quarter Corner to Sections 12-13.

Corner position restored at midpoint and on line between the southwest corner and the southeast corner of section 12.

Corner references:

Maple 6"	S88°E	19.51 feet
Maple 9"	N29°W	16.27 feet
Sign Post	Northwest	0.50 feet

Corners Established1. Center Quarter Corner.

Corner position established at the intersection of the straight lines between opposing quarter corners on the perimeter of section 12.

Corner references:

Maple 7"	S62°W	11.86 feet
Maple 8"	N19°E	16.16 feet
Sign Post	Southwest	0.50 feet

2. West Sixteenth Corner to Sections 1-12.

Corner position established at midpoint and on line between northwest corner and north quarter corner of section 1.

Corner references:

Cedar 8"	S60°W	22.65 feet
Spruce 10"	S20°E	36.76 feet
Sign Post	Southeast	0.50 feet

3. East Sixteenth Corner to Sections 1-12.

Corner position established at midpoint and on line between northeast corner and north quarter corner of section 12.

Corner references:

Cherry 9"	N25°E	56.42 feet
Red Pine 6"	S36°W	66.39 feet
Balsam 4"	N63°W	99.18 feet
Sign Post	West	0.30 feet

4. East Sixteenth Corner to Sections 12-13.

Corner position established at midpoint and on line between southeast corner and south quarter corner of Section 12.

Corner references:

Maple 8"	S9°E	13.45 feet
Maple 7"	N36°W	2.65 feet
Sign Post	Southwest	0.50 feet

5. North Sixteenth Corner to Sections 7-12, Rs. 14-15E

Corner position established at midpoint and on line between northeast corner and east quarter corner of section 12.

Corner references:

Reference Monument	N88°43.9'W	88.00 feet
Maple 7"	S9°W	31.04 feet
Maple 5"	S80°W	30.03 feet
Sign Post	Southwest	0.50 feet

6. North Sixteenth Corner to Sections 11-12.

Corner position established at midpoint and on line between northwest corner and west quarter corner of section 12.

Corner references:

Red Pine 10"	N66°E	15.20 feet
Red Pine 7"	S9°E	8.19 feet
Sign Post	Southeast	0.50 feet

7. North East Sixteenth Corner

Corner position established at intersection of straight lines between opposing sixteenth corner positions on the perimeter of the northeast quarter of section 12.

Corner references:

Maple 6"	S80°E	27.71 feet
Maple 10"	N30°W	3.95 feet
Sign Post	West	0.50 feet

8. Center East Sixteenth Corner

Corner position established at midpoint and on line between center quarter corner and east quarter corner of section 12.

Corner references:

Maple 8"	N30°W	9.58 feet
Spruce 7"	S86°W	10.69 feet
Sign Post	West	0.50 feet

9. Center-South-North East Sixty-Fourth Corner

Corner position established at midpoint and on line between the center east sixteenth and northeast sixteenth of section 12.

Corner references:

Spruce 7"	N30°E	9.64 feet
Spruce 6"	N85°W	3.96 feet
Sign Post	West	0.50 feet

10. South-North Sixty-Fourth Corner to Sections 7-12, Rs. 14-15E.

Corner position established at midpoint and on line between the east quarter corner and north sixteenth corner of section 12.

Corner references:

Basswood 10"	N48°E	18.58 feet
Maple 7"	N35°W	47.82 feet
Sign Post	Northwest	0.50 feet

SURVEYOR'S AFFIDAVIT

State of Wisconsin)
County of Forest) SS

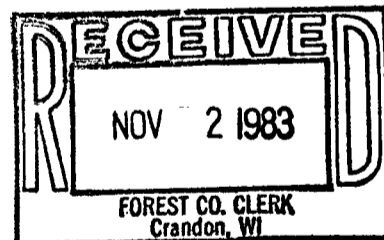
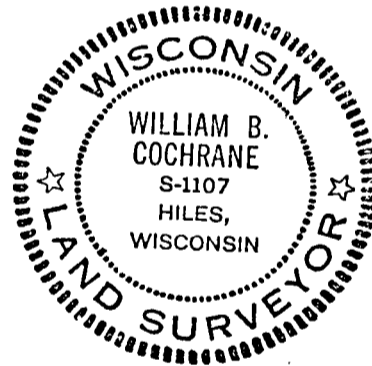
I, William B. Cochrane, Cadastral Surveyor, U.S. Forest Service, and a registered land surveyor in the State of Wisconsin, hereby certify that I have surveyed and subdivided section 12, township 35 north, range 14 east, Fourth Principal Meridian, State of Wisconsin.

The plat map and the notes herewith are a correct representation of the land surveyed and divided. I have surveyed and subdivided said section in accordance with the rules for the survey of the public lands and with the statutes of the State of Wisconsin.

William B. Cochrane

Cadastral Surveyor, U.S. Forest Service
R.L.S. State of Wisconsin
Certificate S-1107

Date of Survey: 1980



Dora C. James