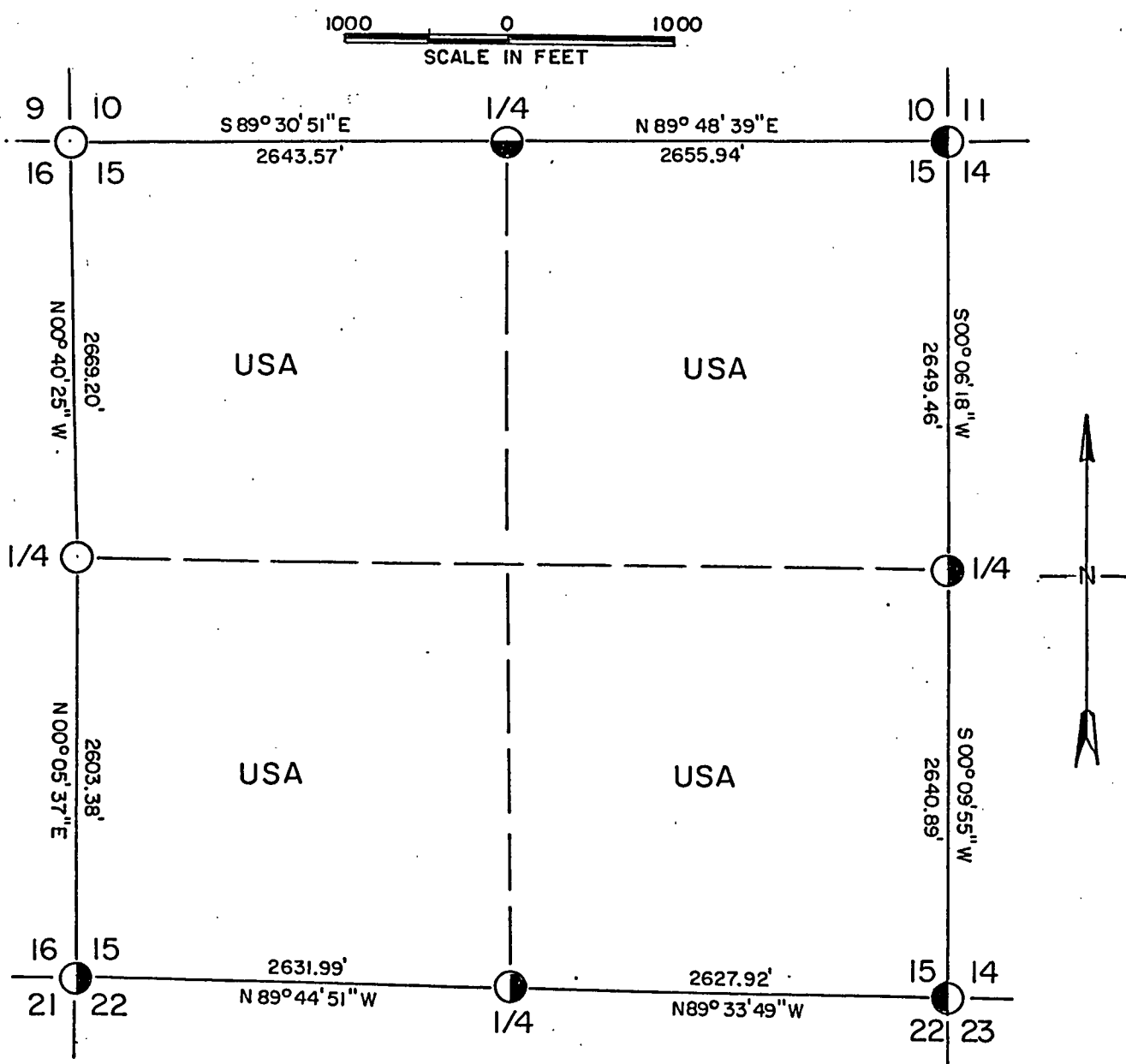


Stock No. 26273

FOREST CO SURVEYOR  
FILE # 35/4/5-19870226  
DATE \_\_\_\_\_ BY \_\_\_\_\_

Sheet one of four

PLAT OF SURVEY  
U.S. GOVERNMENT LANDAll of Section 15  
Township 35 North, Range 14 East, Fourth Principal Meridian  
FOREST COUNTY, WISCONSIN.**LEGEND**

- 2" Diameter Aluminum Monument, 30" long
- ◐ 2" Diameter Aluminum Monument, 60" long
- ◑ 2" Diameter Aluminum Monument with cap stamped for corner
- 2" Diameter Iron Pipe with Brass Cap stamped for corner

— Marked Boundary Lines of US Government Lands

CONVERSION FACTOR:  
Feet to Meters = 0.304801  
Meters to Feet = 3.280833

Stock No. 26273

Sheet two of four

SURVEY NOTES

This survey was made by AARON ASSOCIATES of Oconto Falls, Wisconsin under contract with the USDA, Forest Service, for the purpose of restoring and establishing corners on the perimeter of Section 15, for the purpose of establishing subdivisional corners within Section 15, and for locating and marking the boundaries of US Government lands on their perimeter and within Section 15, Township 35 North, Range 14 East, Fourth Principal Meridian, Forest County, Wisconsin.

The US Government lands in this section were acquired in the mid 1930s.

The original government survey of this township was made in 1859.

The corner positions recovered, restored, and established by this survey are marked by monuments described in the map legend.

The corner positions established were located to an accuracy of one part in 10,000.

The bearings between corner positions are true bearings as determined by solar observation.

The field notes of this survey and a copy of the Plat map are on file in the Forest Supervisor's Office at Rhinelander, Wisconsin.

CORNERS RECOVERED AND RESTORED1. Section corner to Sections 9-10-15-16, T35N, R14E.

Computed the double proportionate position for this corner from the south quarter corner of Section 10, the northwest corner of Section 10, the southwest corner of Section 9, and the west quarter corner of Section 15 all of T35N, R14E. Found the three Hemlock bearing trees of the original government survey within 5 feet of this double proportionate position. The bearing trees were all stumps at ground level, as follows: Hemlock N58W, 14.52'; Hemlock N 51E, 33.00' and Hemlock S32W, 5.94'.

Corner references:

Hemlock	6"	N 25 E	41.92'
Balsam Fir	4"	S 30 E	62.00'
Sugar Maple	6"	S 04 W	154.23'
Yellow Birch	6"	S 41 W	116.72'
Steel Sign Post		West	0.90'

2. Section corner to Sections 10-11-14-15, T35N, R14E.

Located a 2" iron pipe with brass cap stamped for corner set by Jean Resvick, RLS, in 1962. Certificate on file.

Corner references:

Elm	6"	N 75°30'W	28.62'
Elm	4"	N 75°39'E	28.95'
Elm	6"	S 49 E	37.75'
Sugar Maple	4"	S 30 W	15.50'
Wood Sign Post		East	

Stock No. 26273

Sheet three of four

3. Section corner to Sections 14-15-22-23, T35N, R14E.

Located a 2" diameter aluminum monument with cap stamped for corner set by Milo Stefan, RLS, in 1982. Certificate on file.

Corner references:

Aspen	10"	N 84 E	84.97'
Aspen	6"	S 30 E	99.66'
Rock 4'x4'x18"		N 01 E	60.31'
Rock 3'x3'x12"		S 55 W	40.89'
Steel Sign Post		North	2.30'

4. Section corner to Sections 15-16-21-22, T35N, R14E.

Located a 2" diameter aluminum monument stamped for corner and set by Milo Stefan, RLS. Certificate on file.

Corner references:

5. Quarter corner to Sections 15-16, T35N, R14E.

Located a 1½" iron pipe set in old wood post hole. Trees were blazed around this corner position and a blazed line from the south led to this corner. I accepted the iron pipe as corner perpetuation after reviewing the measurements to the pipe and a search for original evidence proved unsuccessful.

Corner references:

Sugar Maple	8"	N 61 E	8.14'
Sugar Maple (2)	6"	S 07 E	76.42'
Spruce	6"	S 35 W	14.85'
Sugar Maple (3)	7"	N 52 W	41.36'
Steel Sign Post		West	1.05'

6. Quarter corner to Sections 10-15, T35N, R14E.

Located a 1½" iron pipe next to an old 4"x4" squared cedar stake from which the two Spruce bearing trees from the original survey were recovered under the swamp grass. The bearing trees were stumps under the swamp grass.

Corner references:

Cedar	8"	South	174.74'
Cedar	6"	S 12 W	194.59'
Cedar	8"	S 21 W	247.46'
Steel Sign Post		North	1.30'

Stock No. 26273

Sheet four of four

7. Quarter corner to Sections 14-15, T35N, R14E.

Located a 2" diameter Aluminum monument with cap stamped for corner set by Milo Stefan, RLS, in 1981. Certificate on file.

Corner references:

Sugar Maple	12"	N 14 E	12.79'
Sugar Maple	14"	S 58 W	6.20'
Basswood	12"	N 50 W	30.75'
Steel Sign Post		East	2.40'

8. Quarter corner to Sections 15-22, T35N, R14E.

Located a 2" diameter Aluminum monument with cap stamped for corner set by Milo Stefan, RLS, in 1982. Certificate on file.

Corner references:

White Pine	5"	S 67 E	50.60'
Cedar	10"	S 16 W	103.34'
Steel Sign Post		North	0.60'

SURVEYOR'S AFFIDAVIT

STATE OF WISCONSIN)  
OCONTO COUNTY )SS

I, Kim H Pritzlaff, Registered Land Surveyor in the State of Wisconsin hereby certify: that I have surveyed and subdivided Section 15, Township 35 North, Range 14 East, Fourth Principal Meridian, Forest County, Wisconsin.

The Plat map and notes herewith are a true and correct representation of the lands surveyed. I have surveyed said Section 15 in accordance with the rules of survey of the public lands and in accordance with the Statutes of the State of Wisconsin.

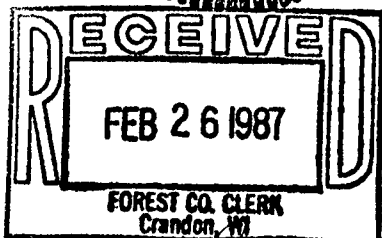


*Kim H. Pritzlaff*  
Kim H Pritzlaff, RLS No. 1259  
AARON ASSOCIATES  
Oconto Falls, Wisconsin

Date of survey: 1985

Plat is ready for filing: *Dale B. Stange*

District Ranger



*Dora C. James*  
Forest Co. Clerk