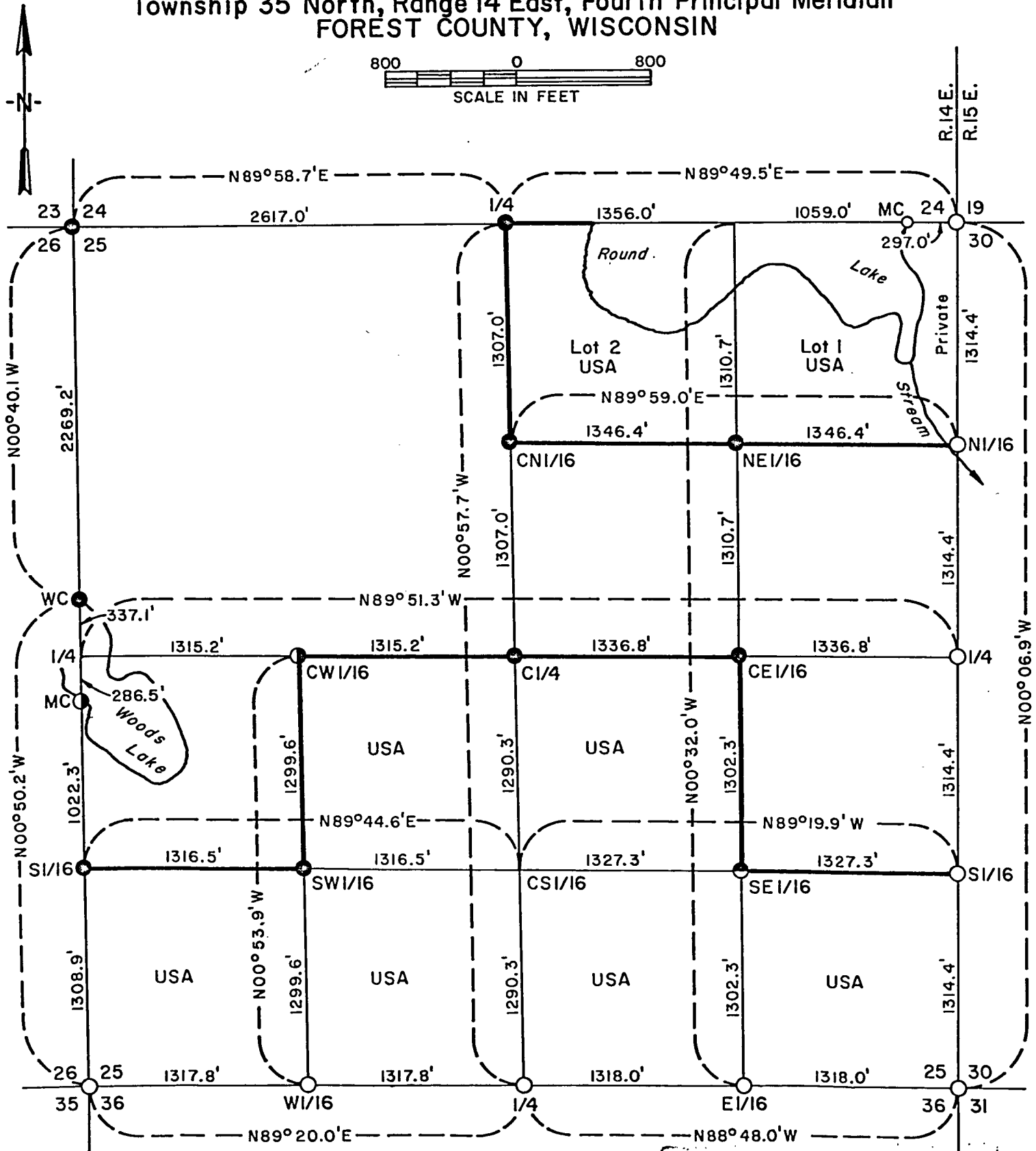


COPY

Page 1 of 7

PLAT OF SURVEY U.S. GOVERNMENT LAND

Being $1/2$ SW $1/4$, NE $1/4$ SW $1/4$, $1/2$ SE $1/4$, NW $1/4$ SE $1/4$, Government Lot 2
and part of Government Lot 1 all in Section 25
Township 35 North, Range 14 East, Fourth Principal Meridian
FOREST COUNTY, WISCONSIN



LEGEND
(next page)

FOREST CO SURVEYOR
FILE # 351425-19760000
DATE _____ BY _____

COPY

Page 2 of 7

LEGEND

- Unmarked corner position.
- Corner position in road marked by a driven iron bar or iron rod.
- Corner position marked by a 2 inch inside diameter by 5 foot long concrete filled galvanized iron pipe capped with a 3 inch diameter brass tablet stamped to identify corner.
- ① Same as above except being 3 foot in length.
- ⊙ Corner position marked by a 6 inch diameter by 2 foot long concrete monument with top inserted 3 inch diameter brass tablet stamped to identify corner.
- Marked boundary of U.S. Government land.
- ~~~~ Shoreline and stream flow from 1971 aerial photographs.
- MC Meander corner.
- WC Witness corner.
- USA U.S. Government land.

SURVEY NOTES

This survey was made by the U. S. Department of Agriculture, Forest Service, for the subdivision of section 25, township 35 north, range 14 east, fourth principal meridian, Forest County, Wisconsin.

The original Government subdivision survey of this township was made in 1859.

The U. S. Government acquired title to lands in section 25 in 1935 and in 1950. The U. S. Government acquired title to Government lot 1 excepting that part on east side of Round Lake and outlet commencing at northeast corner of section 25, running west to lake, thence south along said lake to outlet, thence down middle of said outlet to where it intersects with public road (section line) thence north on road to place of beginning.

The corner positions recovered, restored, and established by this survey are marked and referenced by the monument described in the map legend.

The bearings between corner positions are true bearings as determined by reference to a Polaris observation. The accuracy of the perimeter traverse control for corner restoration and establishment was 0.2 feet in latitude and 0.4 foot in departure.

The field survey notes and a copy of the plat of survey are on file in the Forest Supervisor's office at Rhinelander, Wisconsin.

COPY

Page 3 of 7

Corners Recovered1. Section Corner to Sections 19-24-25-30 Rs. 14-15E.

Corner position recovered as being at centerline intersections of state highway 32 and T road to east and in accordance with 1923 state highway plat.

Corner references:

Reference monument	N.47°12'E.	70.0 feet
NE corner building	S.63°W.	64.2 feet

2. Section Corner to Sections 25-30-31-36 Rs. 14-15E.

Corner position recovered as being at centerline intersections of state highway 32 and T road to west and in line with fence to east.

Corner references:

U.S.G.S. benchmark 5 SAN 1963	S.42°07.5'W.	45.1 feet
Reference monument	N.42°07.5'W.	75.0 feet
Maple 9"	S.55°E.	14.9 feet
Maple 19"	N.65°W.	46.3 feet
Iron post	Northeast	1.0 feet

3. Section Corner to Sections 25-26-35-36.

Corner position recovered as being at centerline intersection of east-west road and T. road to north and referenced by recovered old post with faint scribing located on south edge of said east-west road.

Corner references:

Reference monument	Northwest	50.0 feet
Reference monument	Southwest	50.0 feet
Basswood 8"	S.32°E.	44.8 feet
Basswood 9"	S.10°W.	28.0 feet

4. Section Corner to Sections 23-24-25-26.

Corner position recovered as monumented in 1961 by a private land surveyor. Position verified by recovery of original scribed bearing tree stump.

Corner references:

Yellow birch 5"	S.40°W.	13.4 feet
White birch 7"	N.50°W.	13.5 feet
Iron post	West	1.0 foot

5. Quarter Corner to Sections 24-25.

Corner position found marked by post and iron pipe on edge of swamp in accordance with record call for a cedar swamp.

Corner references:

Elm 8"	N.21°E.	5.4 feet
Maple 8"	S.55°W.	17.2 feet
Sign post	West	1.0 foot

6. Witness Corner Quarter Corner to Sections 25-26.

Witness corner position on north side of Woods Lake recovered from remaining evidence of two original G.L.O. bearing trees.

Corner references:

Sign post	West	1.0 foot
-----------	------	----------

COPY

Page 4 of 7

Corners Restored1. Quarter Corner to Sections 25-30 Rs. 14-15E.

Corner position restored in road at midpoint and on line between the northeast corner and the southeast corner of section 25.

Corner references:

Witness monument	N89°51.3'W.	50.0 feet
------------------	-------------	-----------

2. Quarter Corner to Sections 25-36.

Corner position restored in road at midpoint between the southeast corner and the southwest corner of section 25.

Corner references:

Reference monument	North	50.0 feet
Reference monument	South	50.0 feet
Maple 9"	N.44°E.	40.2 feet
Maple 8"	S.22°W.	42.4 feet

3. Meander Corner to Sections 24-25.

Corner position on east side of Round Lake restored on section line at record distance (4.50 chains) west of northeast corner of section 25.

Corner references:

Witness monument	N89°49'E.	19.0 feet
White birch 5"	N.14°E.	15.0 feet
Maple 7"	S.2°E.	26.8 feet

4. Meander Corner to Sections 24-25.

Corner position on west side of Round Lake not monumented due to wet swamp.
Placed line posts.

Corners Established1. Center Quarter Corner.

Corner position established at the intersection of the straight lines between opposing quarter corners on the perimeter of section 25.

Corner references:

Red pine 6"	N8°E.	34.3 feet
Red pine 5"	S.73°W.	29.7 feet
Sign post	South	1.0 foot
Fence corner	S.21°E.	45.1 feet

2. North Sixteenth Corner to Sections 25-30 Rs. 14-15E.

Corner position in west shoulder of road established at midpoint and on line between northeast corner and east quarter corner of section 25.

Corner references:

Tamarack 8"	S.78°34'E.	57.6 feet
Tamarack 8"	S.41°14'E.	86.6 feet

COPY

Page 5 of 7

3. South Sixteenth Corner to Sections 25-30 Rs. 14-15E.

Corner position in center of road established at midpoint and on line between southeast corner and east quarter corner of section 25.

Corner references:

Witness monument	N.89°19.9'W.	50.0 feet
Elm 9"	S.78°W.	60.3 feet
Elm 9"	N.58°E.	66.8 feet
Sign post	South	1.0 foot

4. East Sixteenth Corner to Sections 25-36.

Corner position in road established at midpoint and on line between southeast corner and south quarter corner of section 25.

Corner references:

Reference monument	North	50.0 feet
Reference monument	South	50.0 feet
Balsam 6"	N.46°E.	46.8 feet
Hemlock 12"	S.23°W.	50.1 feet

5. West Sixteenth Corner to Sections 25-36.

Corner position in road established at midpoint and on line between southwest corner and south quarter corner of section 25.

Corner references:

Reference monument	North	51.0 feet
Reference monument	South	50.0 feet
Yellow birch 8"	N.6°W.	44.6 feet
Maple 7"	S.43°W.	33.8 feet

6. South Sixteenth Corner to Sections 25-26.

Corner position established at midpoint and on line between southwest corner and west quarter corner of section 25.

Corner references:

Elm 10"	N.30°E.	18.0 feet
Elm 8"	S.47°E.	65.4 feet
Sign post	West	0.5 foot

7. Center West Sixteenth Corner.

Corner position established at midpoint and on line between center quarter corner and west quarter corner of section 25.

Corner references:

White birch 7"	S.53°E.	36.7 feet
Sign post	Southeast	1.0 foot

COPY

Page 6 of 7

8. Center North Sixteenth Corner.

Corner position established at midpoint and on line between center quarter corner and north quarter corner of section 25.

Corner references:

Sign post	Southwest	1.0 foot
-----------	-----------	----------

9. Center East Sixteenth Corner.

Corner position established at midpoint and on line between center quarter corner and east quarter corner of section 25.

Corner references:

Sign post	Southwest	1.0 foot
-----------	-----------	----------

10. Southeast Sixteenth Corner.

Corner position established at intersection of straight lines between opposing sixteenth corner position on the perimeter of the southeast quarter of section 25.

Corner references:

Balsam 5"	S.50°W.	15.5 feet
Balsam 6"	N.22°W.	26.9 feet
Sign post	Southwest	1.0 foot

11. Southwest Sixteenth Corner.

Corner position established at intersection of straight lines between opposing sixteenth corner positions on the perimeter of the southwest quarter of section 25.

Corner references:

White birch 5"	N.84°E.	31.6 feet
Sign post	Southeast	
Fence corner	S.42°E.	16.3 feet

12. Northeast Sixteenth Corner.

Corner position established at intersection of straight lines between opposing sixteenth corner positions on the perimeter of the northeast quarter of section 25.

Corner references:

White birch 8"	N.60°E.	18.1 feet
Balsam 5"	N.1°W.	4.3 feet
Sign post	Northwest	1.0 foot

13. Meander Corner to Sections 25-26.

Corner position established on section line and south shore of Woods Lake.

Corner references:

White birch 10"	S.9°E.	18.1 feet
White birch 12"	N.85°W.	53.4 feet

COPY

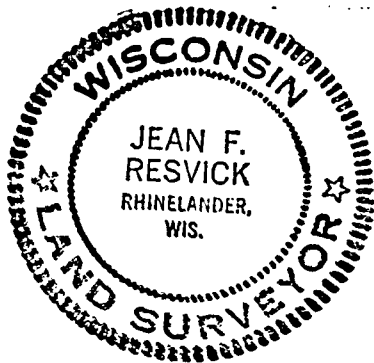
Page 7 of 7

SURVEYOR'S AFFIDAVIT

State of Wisconsin)
County of Forest)^{ss}

I, Jean F. Resvick, land surveyor, U. S. Forest Service, and a registered land surveyor in the State of Wisconsin, hereby certify that I have surveyed and subdivided section 25, township 35 north, range 14 east, fourth principal meridian, Forest County, Wisconsin.

The plat map and survey notes herewith are a correct representation of the land surveyed and subdivided. I have surveyed and subdivided said section in accordance with the rules for the survey of the public lands and the Statutes of the State of Wisconsin.



Land Surveyor, U. S. Forest Service
R.L.S. State of Wisconsin
Certificate S-802

Date of Survey: 1973, 1976