

Stock No. 26273

FOREST CO SURVEYOR

FILE # 351430-19930901

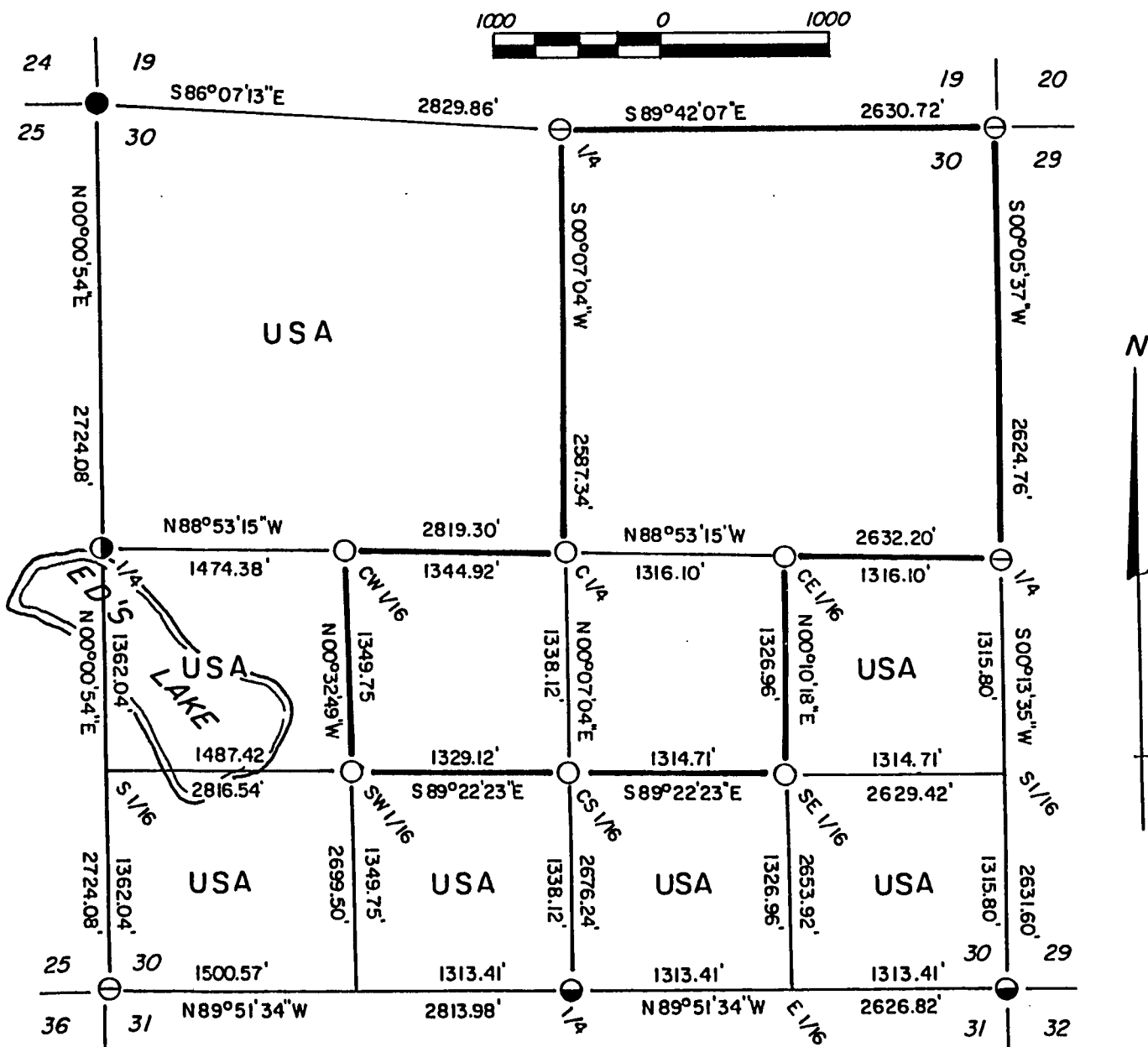
DATE _____ BY _____

Sheet one of five

PLAT OF SURVEY U.S. GOVERNMENT LAND

Being the NE 1/4 - SE 1/4, South 1/2 - SE 1/4, South 1/2-SW 1/4,
NW 1/4-SW 1/4 and the NW 1/4 of Section 30,

Township 35 North, Range 14 East, Fourth Principal Meridian
Forest County, Wisconsin



LEGEND

● = FOUND 1" DIAMETER IRON PIPE WITH FOREST COUNTY CAP STAMPED FOR CORNER

⊖ = FOUND 2" DIAMETER ALUMINUM MONUMENT WITH CAP STAMPED FOR CORNER

⊙ = SET 2" DIAMETER ALUMINUM MONUMENT, 36" LONG WITH CAP STAMPED FOR CORNER

○ = SET 1" DIAMETER ALUMINUM MONUMENT, 36" LONG WITH CAP STAMPED FOR CORNER

— = MARKED BOUNDARY LINES OF U.S. GOVERNMENT LAND

⦿ = SET 2" DIAMETER ALUMINUM MONUMENT, 60" LONG WITH CAP STAMPED FOR CORNER



Stock No. 26273

Sheet two of five

SURVEY NOTES

This survey was made by AARON ASSOCIATES of Oconto Falls, Wisconsin, under contract with the U.S. Department of Agriculture, Forest Service, for the purpose of restoring, and establishing corners on the perimeter of Section 30, for establishing subdivisional corners within Section 30, and for locating and marking the boundaries of U.S. Government land on their perimeter and within Section 30, Township 35 North, Range 14 East, Fourth Principal Meridian, Forest County, Wisconsin.

The U.S. Government land in this section was acquired in 1935 and 1946.

The original government survey of this township was made in 1859.

The corner positions recovered, restored, and established by this survey are marked with monuments described in the map legend.

The corner positions established were located to an accuracy of one part in 5000.

The bearings between corner positions are true bearings as determined by solar observations.

The field notes of this survey and a copy of the plat map are on file in the Forest Supervisor's Office at Rhinelander, Wisconsin.

CORNERS RECOVERED AND RESTORED

- 1) Section corner to Sections 25-36-30-31, T35N, R13 & 14E
Corner was recovered, set by Neal Sperhake, RLS.
Certificate on file in the Forest County Courthouse.
- 2) Section Corner to Sections 24-25-19-30, T35N, R13 & 14E
Corner was recovered, set by Neal Sperhake, RLS.
Certificate on file in the Forest County Courthouse. Set new corner references:

Aspen	15"	N20E	26.17 ft.
Spruce	10"	S72E	20.60 ft.
Maple	12"	N30W	40.51 ft.
Maple	11"	N65W	44.25 ft.
Steel Sign Post		North	0.70 ft.
- 3) Section Corner to Sections 19-20-29-30, T35N, R14E
Corner was recovered, set by Milo Stefan, RLS.
Certificate on file in the Forest County Courthouse.



Stock No. 26273

Sheet three of five

4) Section Corner to Sections 29-30-31-32, T35N, R14E

This corner position was determined to be lost after a diligent search of Hemlock stump evidence proved unsuccessful. It was then set at double proportionate measure. Corner references:

Oak	11"	N77E	35.20 ft.
Maple	7"	S40E	35.85 ft.
Maple	8"	S03W	10.88 ft.
Maple	4"	N67W	11.05 ft.
Steel Sign Post		North	0.90 ft.

5) Quarter Corner to Sections 25-30, T35N, R13 & 14E

Corner was recovered, set by Neal Sperhake, RLS. Certificate on file in the Forest County Courthouse, on Sperhake's Witness Corner. Set actual quarter corner at single proportionate positioning after both of us concurred corner was lost. Corner references:

Dbl Maple	8"	N47E	53.12 ft.
Maple	8"	S68E	57.35 ft.
White Pine	5"	N47W	53.45 ft.
Sperhake's Reference Monument	North		74.80 ft.
Steel Sign Post		North	74.03 ft.
Steel Sign Post		South	0.60 ft.

6) Quarter Corner to Sections 19-30, T35N, R14E

Corner recovered, set by Alan Harrison, RLS. Certificate on file in the Forest County Courthouse.

7) Quarter Corner to Sections 29-30, T35N, R14E

Corner recovered, set by Milo Stefan, RLS. Certificate on file in the Forest County Courthouse.

8) Quarter Corner to Sections 30-31, T35N, R14E

Corner was determined to be lost after a diligent search in logged off area proved unsuccessful. It was set by single proportionate measure. Corner references:

Maple (4)	11"	N71E	34.43 ft.
Maple	9"	S74E	29.40 ft.
Maple	11"	South	13.90 ft.
Maple	6"	S58W	38.78 ft.
Steel Sign Post		North	0.93 ft.

CORNERS ESTABLISHED1) Center Quarter Corner to Section 30, T35N, R14E

Corner position was set at the straight line intersection point of the north-south and east-west quarter lines of Sections 30. Corner references:

Yellow Birch (3)	10"	N60W	25.35 ft.
Hemlock	15"	S60W	22.05 ft.
Steel Sign Post		N10W	1.68 ft.



Stock No. 26273

Sheet four of five

2) Center East Sixteenth Corner to Section 30, T35N, R14E

Corner position was set at midpoint and on line between the center quarter and east quarter corners of section 30. Corner references:

Hemlock	9"	S05E	23.80 ft.
Hemlock	6"	S48W	21.22 ft.
Steel Sign Post		South	1.22 ft.

3) Center South Sixteenth Corner to Section 30, T35N, R14E

Corner position was set at midpoint and on line between the center quarter and south quarter corners of section 30. Corner references:

Hemlock	14"	N68E	30.62 ft.
Hemlock	15"	S10W	28.90 ft.
Steel Sign Post		East	0.91 ft.

4) Center West Sixteenth Corner to Section 30, T35N, R14E

Corner position was set at proportionate distance and on line between the center quarter and west quarter corners of section 30. Corner references:

Maple	9"	N79E	21.25 ft.
Maple	17"	N35W	4.87 ft.
Steel Sign Post		East	1.40 ft.

5) Southeast Sixteenth Corner to Section 30, T35N, R14E

Corner position was set at the straight line intersection point of the north-south and east-west sixteenth lines in the southeast quarter of section 30. Corner references:

Maple	7"	North	28.91 ft.
Maple	5"	S87W	17.55 ft.
Steel Sign Post		West	1.20 ft.

6) Southwest Sixteenth Corner to Section 30, T35N, R14E

Corner was set at the straight line intersection point of the north-south and east-west sixteenth lines in the southwest quarter of section 30. Corner references:

Maple	8"	N73E	7.73 ft.
Maple	12"	S28W	6.95 ft.
Steel Sign Post		East	0.90 ft.

Stock No. 26273

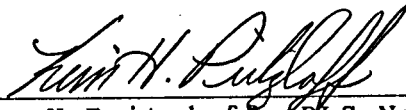
Sheet five of five

SURVEYOR'S AFFIDAVITSTATE OF WISCONSIN)
OCONTO COUNTY)SS

I, Kim H Pritzlaff, Registered Land Surveyor in the State of Wisconsin, hereby certify: that I have surveyed and subdivided Section 30, Township 35 North, Range 14 East, Fourth Principal Meridian, Forest County, Wisconsin.

The plat map and notes herewith are a correct representation of the land surveyed and subdivided. I have surveyed and subdivided said section in accordance with the rules for the survey of the public lands and with the Statutes of the State of Wisconsin.

Date of Survey: 1993


Kim H Pritzlaff, RLS No. 1259
AARON ASSOCIATES
Oconto Falls, Wisconsin



Plat ready for filing:


District Ranger

