

Stock No. 26273

FOREST CO SURVEYOR

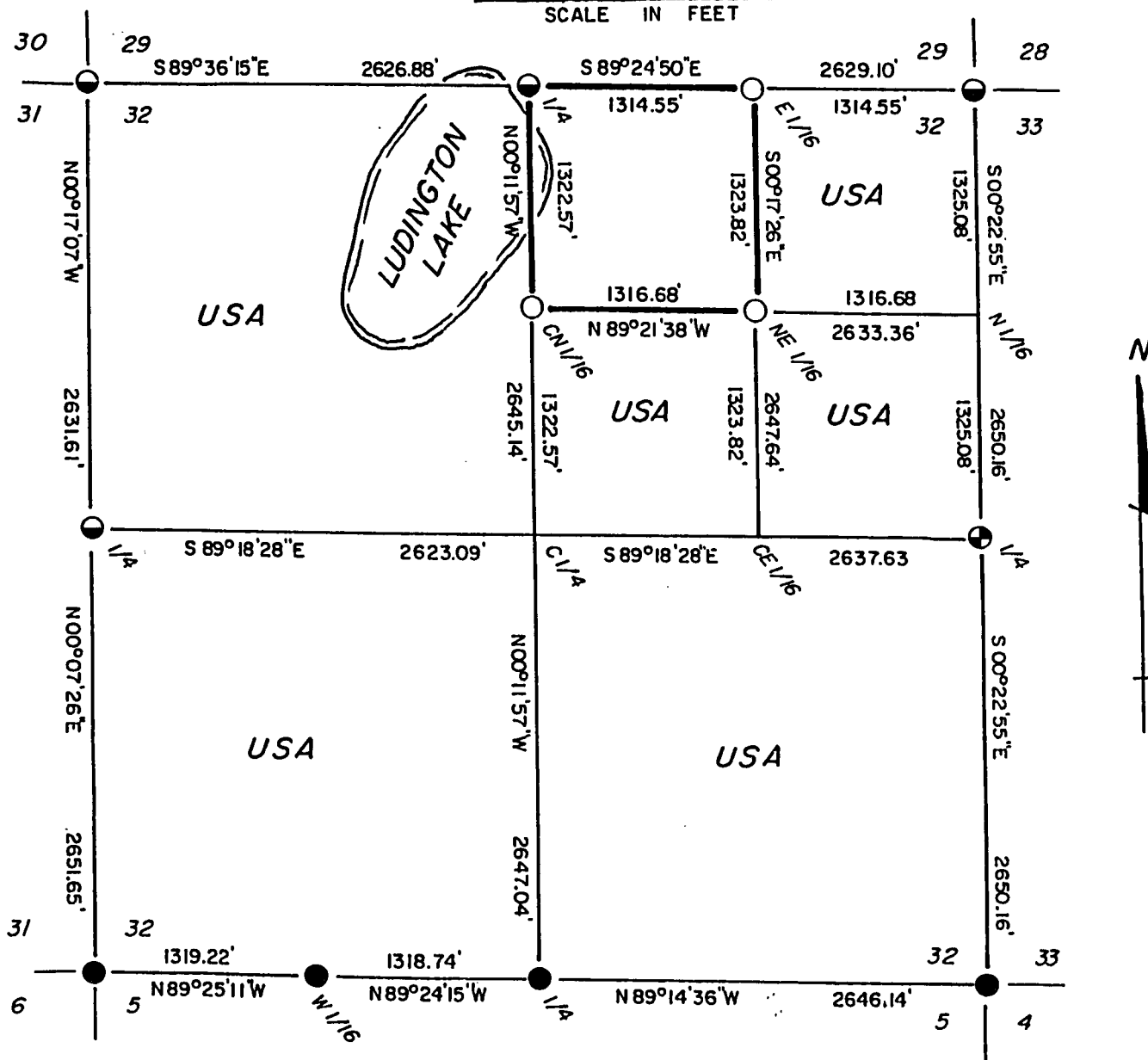
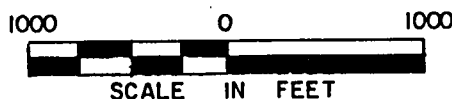
FILE # 351432-19930901

DATE _____ BY _____

Sheet one of four

PLAT OF SURVEY U.S. GOVERNMENT LAND

Being the NE 1/4 - NE 1/4, South 1/2 - NE 1/4, SE 1/4, SW 1/4
and the NW 1/4 of Section 32
Township 35 North, Range 14 East, Fourth Principal Meridian
Forest County, Wisconsin



LEGEND

- = FOUND 2" DIAMETER IRON PIPE WITH BRASS CAP STAMPED FOR CORNER
- ⊙ = SET 2" DIAMETER ALUMINUM MONUMENT, 36" LONG WITH CAP STAMPED FOR CORNER
- = SET 1" DIAMETER ALUMINUM MONUMENT, 36" LONG WITH CAP STAMPED FOR CORNER
- ⊕ = SET 1" DIAMETER IRON PIPE, 24" LONG, WITH 2" DIAMETER ALUMINUM MONUMENT, 36" LONG WITH CAP STAMPED REFERENCE MONUMENT

— = MARKED BOUNDARY LINES OF U.S. GOVERNMENT LAND

Stock No. 26273

Sheet two of four

SURVEY NOTES

This survey was made by AARON ASSOCIATES of Oconto Falls, Wisconsin, under contract with the U.S. Department of Agriculture, Forest Service, for the purpose of restoring, and establishing corners on the perimeter of Section 32, for establishing subdivisional corners within Section 32, and for locating and marking the boundaries of U.S. Government land on their perimeter and within Section 32, Township 35 North, Range 14 East, Fourth Principal Meridian, Forest County, Wisconsin.

The U.S. Government land in this section was acquired in 1935 and 1936.

The original government survey of this township was made in 1859.

The corner positions recovered, restored, and established by this survey are marked with monuments described in the map legend.

The corner positions established were located to an accuracy of one part in 5000.

The bearings between corner positions are true bearings as determined by solar observations.

The field notes of this survey and a copy of the plat map are on file in the Forest Supervisor's Office at Rhinelander, Wisconsin.

CORNERS RECOVERED AND RESTORED1) Section corner to Sections 29-30-31-32, T35N, R14E

This corner position was determined to be lost after a diligent search of Hemlock stump evidence proved unsuccessful. The corner was set at double proportionate measure. Corner references:

Oak	11"	N77E	35.20 ft.
Maple	7"	S40E	35.85 ft.
Maple	8"	S03W	10.88 ft.
Maple	4"	N67W	11.05 ft.
Steel Sign Post		North	0.90 ft.

2) Section Corner to Sections 28-29-32-33, T35N, R14E

This corner position was determined lost after a diligent search in logged off area and Red Pine plantation proved unsuccessful. It was set by double proportionate measure. Corner references:

Red Pine	11"	N35E	18.86 ft.
Red Pine	10"	S83E	31.54 ft.
Red Pine	12"	S22W	13.97 ft.
Red Pine	12"	N65W	9.18 ft.
Steel Sign Post		North	1.05 ft.



Stock No. 26273

Sheet three of four

3) Section Corner to Sections 4-5-32-33, T34 & 35N, R14E

Corner was recovered, set by Jean Resvick, RLS.
Certificate on file in the Forest County Courthouse.

4) Section Corner to Sections 5-6-31-32, T34 & 35N, R14E

Corner was recovered, set by George Kapitz, RLS.
Certificate on file in the Forest County Courthouse.

5) Quarter Corner to Sections 31-32, T35N, R14E

Corner was recovered from rotted post and bearing tree stump evidence. Found rotted Hemlock stump S72E and 11 ft. from post evidence along with hardwood turnout S36W for 13 ft. Accepted evidence and monumented same. Corner references:

Maple	7"	N72E	16.28 ft.
Maple (2)	8"	S02W	27.41 ft.
Maple	5"	S56W	28.82 ft.
Maple	12"	N11W	23.50 ft.
Steel Sign Post		North	0.95 ft.

6) Quarter Corner to Sections 29-32, T35N, R14E

Corner was restored from an existing 3/4" iron pipe stated to be corner by area landowner. Pulled S18E for 31 links and found rotted Hemlock Stump evidence and at N39E for 20 links found hardwood stump hole with Birch progeny growing. Distance to north end of lake also fit original calls within a half chain. I accepted this evidence and monumented same. Corner references:

Maple	6"	East	44.08 ft.
Maple	8"	South	42.26 ft.
Hemlock	12"	S15W	61.90 ft.
Hemlock	11"	N85W	81.81 ft.
Steel Sign Post		South	1.10 ft.

7) Quarter Corner to Sections 32-33, T35N, R14E

This corner position was determined lost after a diligent search in recent Popple slashing proved unsuccessful. The corner was set by single proportionate measure. Corner references:

Basswood	11"	N23E	26.30 ft.
Maple	7"	N80W	27.16 ft.
Maple	8"	N57W	15.40 ft.
Aluminum Reference Monument		North	10.00 ft.
Steel Sign Post		North	11.00 ft.

8) Quarter Corner to Sections 5-32, T34 & 35N, R14E

Corner was recovered, set by Jean Resvick, RLS. Corner certificate on file in the Forest County Courthouse.

9) West Sixteenth Corner to Sections 5-32, T34 & 35N, R14E

Corner was recovered, set by L. Ernest George, RLS.
Certificate on file in the Forest County Courthouse.

Stock No. 26273

Sheet four of four

CORNERS ESTABLISHED

- 1) East Sixteenth Corner to Sections 29-32, T35N, R14E
This corner position was set at midpoint and on line between the northeast and north quarter corners of section 32. Corner references:

Maple	4"	S79E	14.42 ft.
Maple	4"	N22W	9.42 ft.
Steel Sign Post		West	1.00 ft.

- 2) Northeast Sixteenth Corner to Section 32, T35N, R14E
This corner was set at the straight line intersection point of the north-south and east-west sixteenth lines in the northeast quarter of section 32. Corner references:

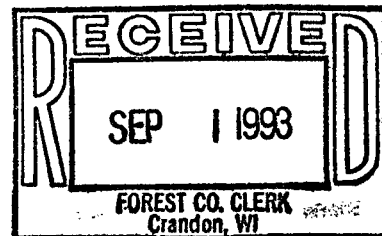
Aspen	4"	S73E	8.46 ft.
Maple	3"	N43W	23.88 ft.
Steel Sign Post		North	0.40 ft.

- 3) Center North Sixteenth Corner to Section 32, T35N, R14E
This corner position was set at the midpoint and on line between the center quarter and north quarter corners of section 32. Corner references:

Basswood (6)	10"	N05E	66.83 ft.
Cherry	5"	S52E	34.22 ft.
Steel Sign Post		North	1.00 ft.

SURVEYOR'S AFFIDAVIT

STATE OF WISCONSIN)
OCONTO COUNTY)SS



I, Kim H Pritzlaff, Registered Land Surveyor in the State of Wisconsin, hereby certify: that I have surveyed and subdivided section 32, Township 35 North, Range 14 East, Fourth Principal Meridian, Forest County, Wisconsin.

The plat map and notes herewith are a correct representation of the land surveyed and subdivided. I have surveyed and subdivided said section in accordance with the rules of survey for the public lands and with the Statutes of the State of Wisconsin.

Date of survey: 1993

Kim H Pritzlaff, RLS No. 1259
AARON ASSOCIATES
Oconto Falls, Wisconsin

Plat ready for filing:

District Ranger

