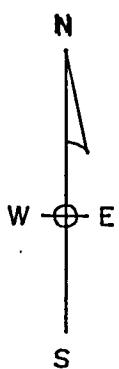
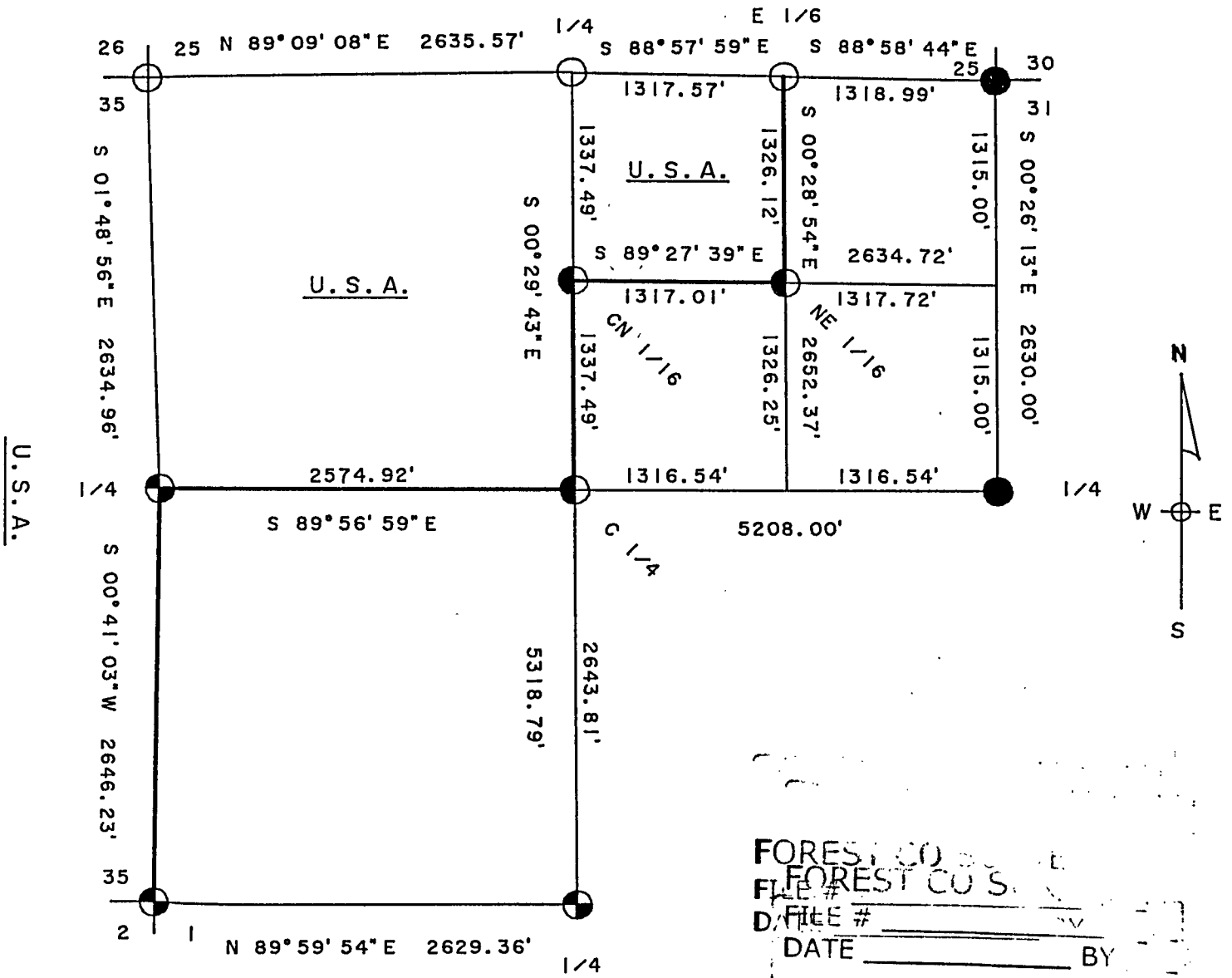
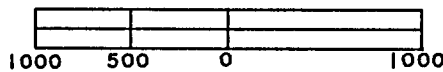


PLAT OF SURVEY

U. S. GOVERNMENT LANDS

BEING THE N.W. 1/4 OF THE N.E. 1/4 AND THE N.W. 1/4; SECTION 36;
TOWNSHIP 35 NORTH; RANGE 14 EAST; FOURTH PRINCIPAL MERIDIAN;
FOREST COUNTY; WISCONSIN.

SCALE IN FEET



FOREST CO SURVEYOR
 FOREST CO SURVEYOR
 FILE # _____
 DATE _____ BY _____
 FOREST CO SURVEYOR
 FILE # 351436-19920513
 DATE _____ BY _____

LEGEND

- 1" SQUARE IRON POST, FOUND IN PLACE UNDER ROAD.
- RAILROAD SPIKE IN ROAD SURFACE; FOUND IN PLACE.
- ⊕ 2 1/2" ALUMINUM MONUMENT, FOUND IN PLACE.
- ◐ 1" X 36" ALUMINUM MONUMENT, SET THIS SURVEY.
- MARKED PROPERTY BOUNDARY OF U.S. GOVERNMENT LANDS.

Stock No. 26273

Sheet 2 of 3

SURVEY NOTES

This survey was made by the U.S. Department of Agriculture, Forest Service, for the purpose of restoring and establishing corners on the perimeter of Section 36 for establishing subdivisional corners within Section 36 and for locating and marking the boundaries of U.S. Government land on their perimeter and within Section 36 Township 35 North, Range 14 East, 4th Principal Meridian, Forest County, Wisconsin.

The U.S. Government lands in this section were acquired in 1938 and 1953.

The original government subdivision survey of this township was made in 1859.

The corner positions recovered, restored and established by this survey are marked by the monument described in the map legend.

The corner positions established were located to an accuracy of one part in 5000.

The bearings between corner positions are true bearings as determined by solar observations.

The field notes of this survey and a copy of this plat are on file in the Forest Supervisor's Office at Rhinelander, Wisconsin.

CORNERS RECOVERED OR RESTORED

1. Corner Common to Sections 25, 30, 31, and 36.
Corner monumented by Jean Resvick, R.L.S. Certificate by Resvick and Wisconsin D.O.T. on file in Forest County.
2. Corner Common to Sections 35, 36, 1 and 2.
Corner monumented by Milo Stefan, R.L.S. Certificate on file in Forest County.
3. Corner Common to Sections 25, 26, 35 and 36.
Corner monumented by Jean Resvick, R.L.S. Certificate on file in Forest County.
4. Quarter Corner Common to Sections 25 and 36.
Corner monumented by Jean Resvick, R.L.S. Certificate on file in Forest County.
5. Quarter Corner Common to Sections 36 and 31.
Corner monumented by Milo Stefan, R.L.S. Certificates by Stefan and Wisconsin D.O.T. on file in Forest County.
6. Quarter Corner Common to Sections 36 and 1.
Corner monumented by Milo Stefan, R.L.S. Certificate on file in Forest County.
7. Quarter Corner Common to Sections 35 and 36.
Corner monumented by Alan Harrison, R.L.S. Certificate on file in Forest County.
8. East One-Sixteenth Corner Common to Sections 25 and 36.
Corner monumented by Jean Resvick for survey of Section 25. True corner position is N.79°20'11" E 0.72 feet.

Stock No. 26273

Sheet 3 of 3

CORNERS ESTABLISHED1. Center Quarter Corner to Section 36.

Corner set at intersection of the quarter lines of Section 36.

Corner References:

Sugar	9"	N.69°E.	65.95 feet
Red Pine	9"	N.17°W.	54.05 feet
Steel Sign Post		Northwest	1.34 feet

2. Center North One-Sixteenth Corner to Section 36.

Corner established midpoint and an line between the North Quarter and Center Quarter Corners.

Corner References:

Sugar	9"	N.33°E.	24.19 feet
Red Pine	7"	N.83°W.	4.77 feet
Steel Sign Post		Northwest	1.25 feet

3. Northeast One-Sixteenth Corner to Section 36.

Corner established at the intersection of the North and East sixteenth lines.

Corner References:

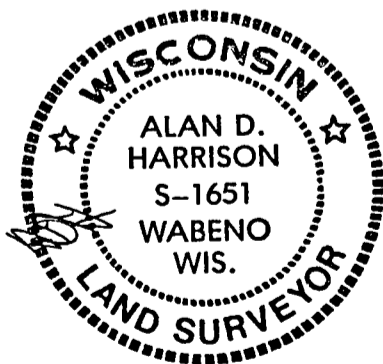
Spruce	10"	N.26°E.	26.95 feet
Balsam	9"	S.20°E.	20.32 feet
Steel Sign Post		Northwest	1.20 feet

SURVEYOR'S AFFIDAVIT

State of Wisconsin] SS
County of Forest]

I, Alan D. Harrison, Land Surveyor, U.S.D.A. Forest Service and a Registered Land Surveyor in the State of Wisconsin, do hereby certify that I have surveyed and subdivided Section 36, Township 35 North, Range 14 East, Fourth Principal Meridian, State of Wisconsin.

The plat map and the notes herewith are a correct representation of the land surveyed and divided. I have surveyed and subdivided said section in accordance with the rules for survey of the public lands and with the statutes of the State of Wisconsin.



Alan D. Harrison

LAND SURVEYOR, U.S.D.A. Forest Service
R.L.S. Number S-1651
State of Wisconsin

Plat Ready for Filing:

Sue Vap

District Ranger

Date of Survey: 1991

