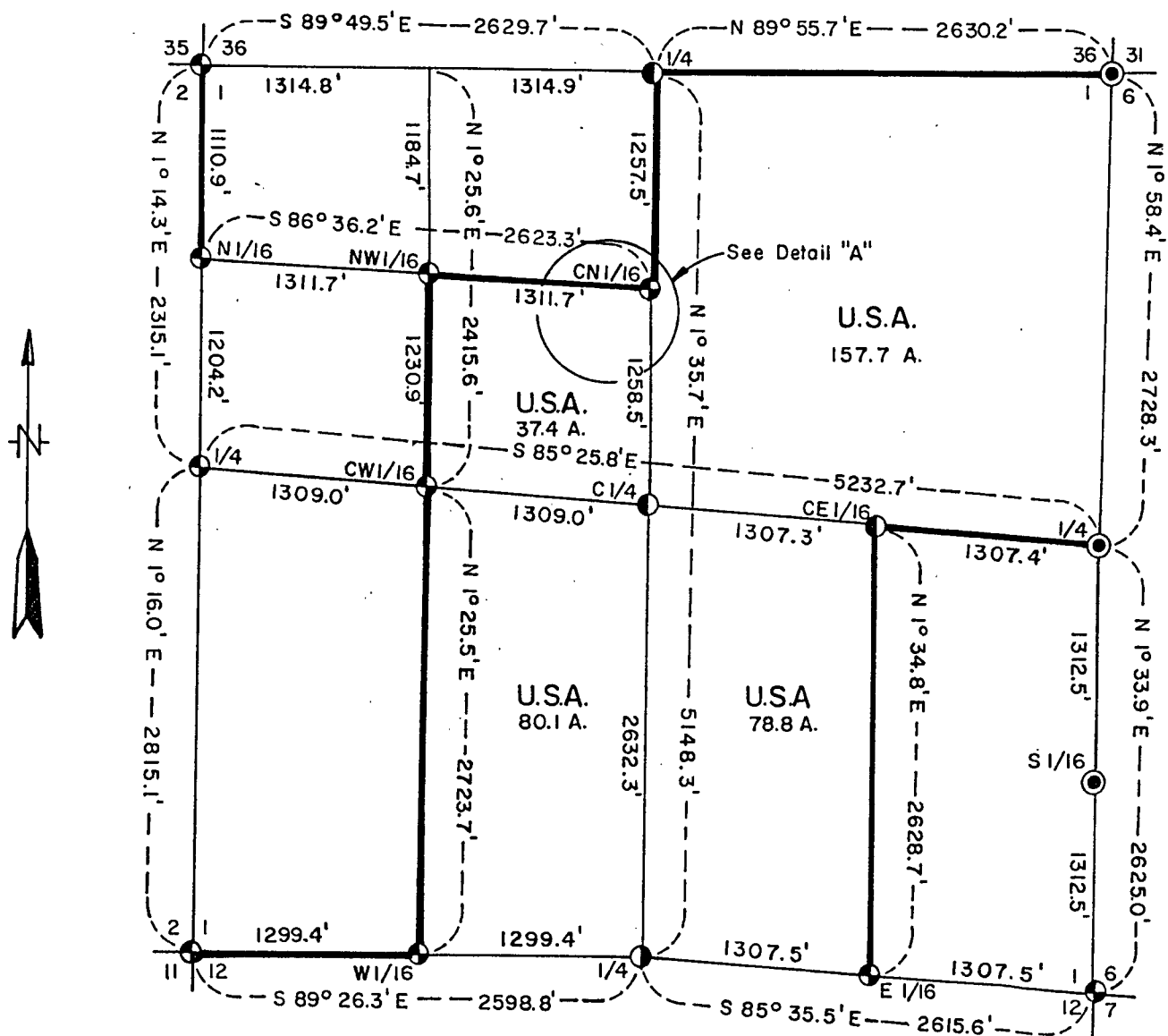
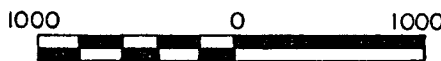


PLAT OF SURVEY U.S. GOVERNMENT LAND

Being the NE1/4; W1/2, SE1/4; E1/2, SW1/4 and SE1/4, NW1/4, Section 1
Township 34 North, Range 14 East, Fourth Principal Meridian
FOREST COUNTY, WISCONSIN

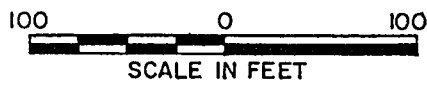
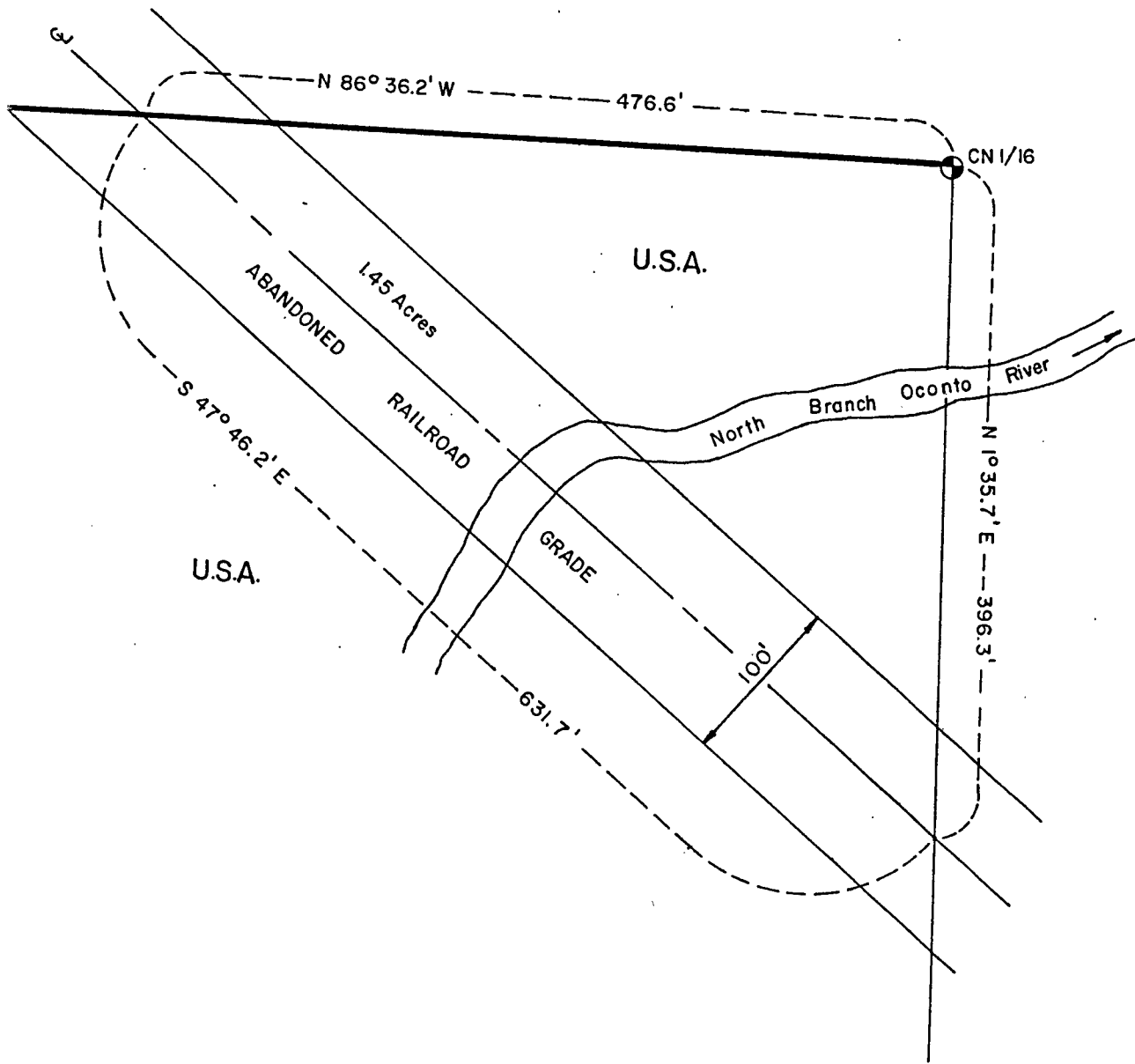


LEGEND

- ⊕ 2" Diameter Aluminum Monument, 30" Long.
- 2" Diameter Aluminum Monument, 60" Long.
- ⦿ 2" Diameter Aluminum Monument, 120" Long.
- ⊙ R.R. Spike in Highway Referenced by 2" Diameter Aluminum Monument, 30" Long.
- Property Boundary Line Marked to Standard

Conversion Factor:
Feet to Meters = 0.304801
Meter to Feet = 3.280833

DETAIL "A"



Stock No. 26273

Sheet 3 of 7

SURVEY NOTES

This survey was made by the U. S. Department of Agriculture, Forest Service, for the purpose of restoring and establishing corners on the perimeter of Section 1, for establishing subdivisional corners within Section 1, and for locating and marking the boundaries of U. S. Government lands on their perimeter and within Section 1, Township 34 North, Range 14 East, Fourth Principal Meridian, Forest County, Wisconsin.

The U. S. Government lands in this section were acquired between 1935 and 1953.

The original government subdivision survey of this township was made in 1857 and 1859. Nathan Smith surveyed east side of this section in 1905, 1907, and 1924.

The corner positions recovered, restored, and established by this survey are marked by the monument described in the map legend.

The corner positions established were located to an accuracy of one part in 3000.

The bearings between corner positions are true bearings as determined by solar observations.

The field notes of this survey and a copy of this plat are on file in the Forest Supervisor's Office at Rhinelander, Wisconsin.

CORNERS RECOVERED AND RESTORED1. Section Corner to Sections 1-6-7-12, T.34N., R.14-15E.

Corner position restored by extension of the centerline of State Highway #32 southerly, as per N. Smith's surveys from one mile north.

Corner References:

Spruce	7"	N.33°W.	197.98 feet
Steel Sign Post		Northeast	1.90 feet
Steel Sign Post		Southwest	1.30 feet
"X" North		N.30°E.	215.45 feet
"X" South		N.49°E.	168.83 feet
"X" is on north and south concrete bridge abutments.			

2. Section Corner to Sections 1-2-11-12, T.34N., R.14E.

Corner position found marked with a post hole and small stake from which the original bearing tree remains were located.

Corner References:

Balsam Fir	5"	N.14°E.	29.93 feet
Red Maple	5"	S.60°E.	40.94 feet
Red Pine	10"	S.5°W.	10.52 feet
Red Pine	9"	N.86°W.	37.06 feet
Steel Sign Post		West	3.25 feet

Stock No. 26273

Sheet 4 of 7

3. Section Corner to Sections 1-2-35-36, T.34-35N., R.14E.

Corner position found marked by post hole from which original Elm stump was found. Large Pine stump east is original line tree which also supports section corner.

Corner References:

Sugar	11"	N.14°E.	10.41	feet
Hemlock	6"	S.7°E.	44.33	feet
Sugar	16"	S.61°W.	42.30	feet
Basswood	10"	N.30°W.	29.03	feet
Steel Sign Post		South	1.20	feet

4. Section Corner to Sections 1-36-31-6, T.34-35N., R.14-15E.

Corner position found marked by railroad spike in centerline intersection of State Highway #32 and Trump Lake Road. Call east to centerline of railroad from 1916 railroad plat fits, as does Nathan Smith's early 1900s survey of range line 2 miles north and south.

Corner References:

2" x 30" aluminum monument reference point		Southwest	50.00	feet
Red Pine	9"	S.43°W.	25.52	feet
Red Pine	9"	S.85°W.	15.92	feet
Red Pine	8"	N.62°W.	18.70	feet
Steel Sign Post		Southeast	1.00	feet

2" x 30" aluminum monument reference point		Southwest	100.00	feet
Red Pine	5"	N.85°E.	12.25	feet
Red Pine	6"	S.52°W.	20.15	feet
Red Pine	7"	N.16°W.	19.95	feet
Steel Sign Post		Northwest	2.00	feet

5. Quarter Corner to Sections 1-12, T.34N., R.14E.

Corner position found marked by a scribed wood post.

Corner References:

Tamarack	5"	N.69°E.	18.47	feet
Tamarack	4"	S.48°E.	32.63	feet
Tamarack	5"	N.71°W.	47.77	feet
Steel Sign Post		North	2.40	feet

6. Quarter Corner to Sections 1-2, T.34N., R.14E.

Corner position found marked by a scribed wood post from which the original stumps were found along with Pine stump scribed by Nathan Smith in 1925.

Corner References:

Red Pine	15"	N.82°E.	38.61	feet
Tamarack	5"	S.86°W.	51.89	feet
Tamarack	5"	N.7°W.	43.25	feet
Steel Sign Post		South	1.50	feet

Stock No. 26273

Sheet 5 of 7

7. Quarter Corner to Sections 1-36, T.34-35N., R.14E.

Corner position marked by wood post and iron pipe. Bearings and distances fit with original notes.

Corner References:

White Birch	14"	N.57°E.	33.01 feet
Balsam	10"	S.46°E.	12.13 feet
White Birch	10"	N.38°W.	41.42 feet
Steel Sign Post		West	1.10 feet

8. Quarter Corner to Sections 1-6, T.34N., R.14-15E.

Corner position restored from railroad plat of 1916 and Nathan Smith's early 1900s survey of this range line. Corner position marked by railroad spike in centerline of State Highway #32.

Corner References:

2" x 30" aluminum monument			
witness corner		N.87-12.4°E.	50.00 feet
Tamarack	3"	N.1°W.	22.23 feet
Aspen	6"	N.12°E.	21.82 feet
Balsam	3"	N.78°W.	20.08 feet
Steel Sign Post		East	2.40 feet

CORNERS ESTABLISHED1. Center One-Quarter Corner to Section 1, T.34N., R.14E.

Corner established at the intersection of the east-west and north-south quarter lines to Section 1.

Corner References:

Cedar	6"	N.47°E.	11.68 feet
Cedar	4"	S.28°W.	6.84 feet
Cedar	5"	N.50°W.	9.06 feet
Steel Sign Post		West	1.10 feet

2. East One-Sixteenth Corner to Sections 1-12, T.34N., R.14E.

Corner position established midpoint and on line between the southeast corner and the south quarter corner of Section 1.

Corner References:

Tamarack	6"	N.58°E.	82.32 feet
Tamarack	3"	S.39°E.	12.74 feet
Tamarack	3"	S.8°W.	25.42 feet
Steel Sign Post		South	1.80 feet

3. West One-Sixteenth Corner to Sections 1-12, T.34N., R.14E.

Corner position established midpoint and on line between the southwest corner and the south quarter corner of Section 1.

Corner References:

White Pine	4"	N.28°E.	29.84 feet
Spruce	4"	S.39°E.	22.39 feet
White Birch	10"	N.69°W.	37.05 feet
Steel Sign Post		North	1.10 feet

Stock No. 26273

Sheet 6 of 7

4. North One-Sixteenth to Sections 1-2, T.34N., R.14E.

Corner established proportionally and on line between the northwest corner and west quarter corner of Section 1.

Corner References:

Sugar	6"	N.32°E.	16.17 feet
Sugar	8"	S.64°W.	6.41 feet
Sugar	6"	N.20°W.	16.43 feet
Steel Sign Post		West	0.50 feet

5. South One-Sixteenth to Sections 1-6, T.34N., R.14-15E.

Corner established midpoint and on line between the southeast corner and the east quarter corner of Section 1. Corner position by railroad spike in surface of State Highway #32.

Corner References:

2" x 30" aluminum monument witness corner		N.84-34.1°E.	50.00 feet
Tamarack	7"	N.15°E.	31.69 feet
Aspen	6"	S.62°E.	91.38 feet
Tamarack	10"	N.8°W.	50.40 feet
Steel Sign Post		West	0.80 feet

6. Center East One-Sixteenth to Section 1, T.34N., R.14E.

Corner established midpoint and on line between the center quarter and the east quarter corner of Section 1.

Corner References:

Tamarack	12"	N.82°E.	98.06 feet
Tamarack	10"	S.19°E.	71.23 feet
Tamarack	8"	S.63°W.	18.49 feet
Steel Sign Post		East	1.90 feet

7. Center West One-Sixteenth to Section 1, T.34N., R.14E.

Corner established midpoint and on line between the center quarter and west quarter corner of Section 1.

Corner References:

Spruce	6"	N.42°E.	14.61 feet
Tamarack	7"	S.42°E.	10.67 feet
Spruce	9"	S.60°W.	10.69 feet
Steel Sign Post		North	1.35 feet

8. Center North One-Sixteenth to Section 1, T.34N., R.14E.

Corner established proportionally and on line between the center quarter and north quarter corner of Section 1.

Corner References:

Elm	5"	S.64°E.	33.06 feet
Spruce	10"	N.39°W.	38.18 feet
Balsam	8"	N.6°W.	12.52 feet
Steel Sign Post		North	1.25 feet

Stock No. 26273

Sheet 7 of 7

9. Northwest One-Sixteenth to Section 1, T.34N., R.14E.

Corner established at the intersection of the north and west one-sixteenth lines of Section 1.

Corner References:

Red Pine	8"	N.60°E.	3.52 feet
Red Pine	8"	N.80°E.	24.70 feet
Red Pine	10"	S.12°E.	18.92 feet
Steel Sign Post		East	1.30 feet

SURVEYOR'S AFFIDAVIT

State of Wisconsin]
 County of Forest] SS

I, Milo E. Stefan, Cadastral Surveyor, U. S. Forest Service and a registered surveyor in the State of Wisconsin, hereby certify that I have surveyed and subdivided Section 1, Township 34 North, Range 14 East, Fourth Principal Meridian, State of Wisconsin.

The plat map and the notes herewith are a correct representation of the land surveyed and divided. I have surveyed and subdivided said section in accordance with the rules for survey of the public lands and with the statutes of the State of Wisconsin.



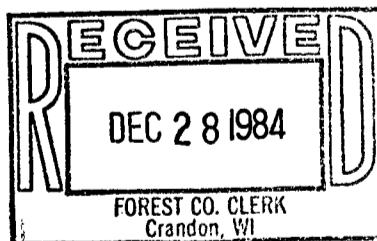
Milo E. Stefan

Cadastral Surveyor, U. S. Forest Service
 R. L. S., State of Wisconsin
 Certificate S-1558

Plat Ready For Filing: *Dale S. Staege*

District Ranger

Date of Survey: 1982



Sally L. Deer
 Deputy Co. Clerk