

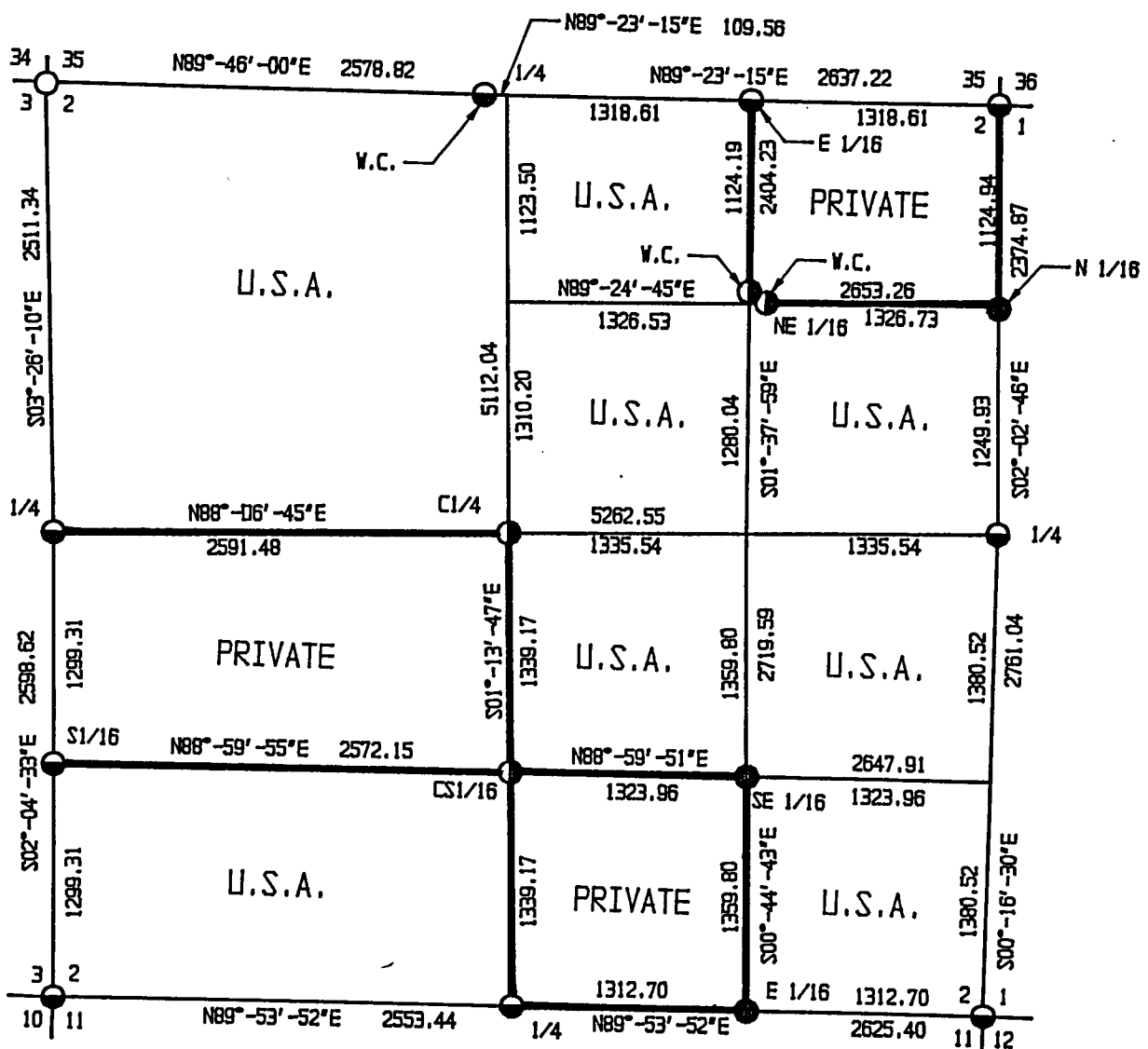
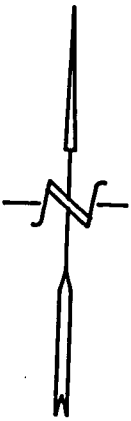
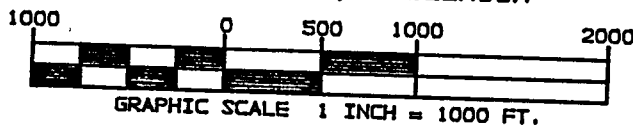
PLAT OF SURVEY

SHEET 1 OF 5

U.S. GOVERNMENT LAND

BEING ALL OF SECTION 2 EXCEPT
NE 1/4-NE 1/4, N 1/2-SW 1/4 AND SW 1/4-SE 1/4
TOWNSHIP 35 NORTH, RANGE 15 EAST
FOURTH PRINCIPAL MERIDIAN

FOREST COUNTY, WISCONSIN



LEGEND

- 1" X 36" ALUMINUM CAPPED MONUMENT - SET THIS SURVEY.
- 1" X 60" ALUMINUM CAPPED MONUMENT - SET THIS SURVEY.
- FOUND ALUMINUM CAPPED PIPE.
- FOUND BRASS CAPPED PIPE.
- BOUNDARY LINE SET TO FOREST SERVICE STANDARDS.

**SECTION 2, T35N-R15E
SURVEY NOTES**

This survey was made by Coleman Engineering Company for the U.S. Department of Agriculture-Forest Service under Contract No. 53-56A6-4-00936, Order No. 43-56A6-4-3062 for the purpose of restoring and establishing corners on the perimeter of Section 2, for establishing subdivisional corners within Section 2, and for locating and marking the boundaries of U.S. Government lands along the perimeter and within Section 2, Township 35 North, Range 15 East, Fourth Principal Meridian, Forest County, State of Wisconsin.

The survey is based on U.S.D.A. U.S.-Forest Service GPS survey control completed in 1993 and 1994 and the resulting sectional subdivision therefrom.

The original township line survey was completed by Artemas Curtis in 1857. The township subdivision survey was completed by James McBride in 1859.

The corner positions recovered, restored and established by this survey are marked by the monument described in the map legend.

The corner positions established were located to a minimum accuracy of 1 part in 5000.

The field notes of this survey and a copy of this plat are on file in the Forest Supervisor's office in Rhinelander, Wisconsin.

The bearings between corner positions are grid bearings, based on the Wisconsin north zone state plane coordinate system.

Conversions between grid bearings and true bearings are performed by use of the following algebraic formula: true bearing - convergence angle = grid bearing. (close attention to the algebraic sign must be observed, ie: ± of the convergence angle.)

Distances shown are Wisconsin north zone state plane grid distances. Conversion to surface distance is performed by the formula:

$$\text{Grid Distance} \times \left(\frac{20,906,000}{20,906,000 + \text{Mean Elev.}} \right) = \text{Surface Distance}$$

Wisconsin north zone coordinates were computed by USDA - U.S. Forest Service and are based on the 1983 North American Datum.

COORDINATE VALUES ON 1983 NAD

<u>Corner Code</u>	<u>North Latitude</u>	<u>West Longitude</u>	<u>State Plane Coordinates</u>		<u>Convergence Angle</u>	<u>Scale Factor</u>
			<u>North</u>	<u>East</u>		
N.W.	45° 32' 58.93"	88° 35' 35.17"	142,864.761	2,328,926.182	01° 00' 53.62"	1.000003122
N 1/4	45° 32' 58.58"	88° 34' 57.40"	142,876.432	2,331,614.535	01° 01' 20.87"	1.000003141
E 1/16	45° 32' 58.48"	88° 34' 38.87"	142,890.528	2,332,933.069	01° 01' 34.23"	1.000003146
NE	45° 32' 58.39"	88° 34' 20.34"	142,904.622	2,334,251.604	01° 01' 47.60"	1.000003151
NW 1/16	45° 32' 47.39"	88° 34' 38.70"	141,766.795	2,332,965.105	01° 01' 34.35"	1.000003723
N 1/16	45° 32' 47.28"	88° 34' 20.06"	141,780.401	2,334,291.768	01° 01' 47.80"	1.000003728

Corner Code	North Latitude	West Longitude	State Plane Coordinates		Convergence Angle	Scale Factor
			North	East		
W 1/4	45° 32' 54.16"	88° 35' 33.68"	140,357.934	2,329,076.696	01° 00' 54.69"	1.000004414
C 1/4	45° 32' 34.55"	88° 34' 57.28"	140,443.289	2,331,666.770	01° 01' 20.96"	1.000004393
E 1/4	45° 32' 34.95"	88° 34' 19.75"	140,531.266	2,334,336.394	01° 01' 48.02"	1.000004372
S 1/16	45° 32' 21.34"	88° 35' 33.34"	139,059.475	2,329,123.760	01° 00' 54.94"	1.000005088
C-S 1/16	45° 32' 21.33"	88° 34' 57.21"	139,104.431	2,331,695.513	01° 01' 21.01"	1.000005088
SE 1/16	45° 32' 21.32"	88° 34' 38.61"	139,127.596	2,333,019.268	01° 01' 34.42"	1.000005088
SW	45° 32' 08.51"	88° 35' 33.01"	137,761.016	2,329,170.823	01° 00' 55.18"	1.000005766
S 1/4	45° 32' 08.11"	88° 34' 57.14"	137,765.572	2,331,724.256	01° 01' 21.05"	1.000005787
E 1/16	45° 32' 07.90"	88° 34' 38.70"	137,767.914	2,333,036.953	01° 01' 34.36"	1.000005798
SE	45° 32' 07.69"	88° 34' 20.26"	137,770.257	2,334,349.650	01° 01' 47.65"	1.000005809

CORNERS RECOVERED OR RESTORED

1. Section corner common to Sections 2 and 3, T35N-R15E, and Sections 34 and 35, T36N-R15E. Corner position monumented by William Cochrane, RLS, in 1980 and recovered by Alan Harrison, RLS, 11/16/93. Certificate on file in Forest County - Document No. 151818.
2. Witness corner to quarter corner common to Section 2, T35N-R15E, and Section 35, T36N-R15E. Corner position monumented by Milo Stefan, RLS, 1982. Certificate on file in Forest County - Document No. 129842.
3. East sixteenth corner common to Section 2, T35N-R15E, and Section 35, T36N-R15E. Corner position monumented by Milo Stefan, RLS, 1982, Document No. 129814. Corner position adjusted by Alan Harrison, RLS, 7/13/94.
4. Section corner common to Sections 1 and 2, T35N-R15E, and Sections 35 and 36, T36N-R15E. Corner position monumented by Milo Stefan, RLS, in 1982 and recovered by Alan Harrison, RLS, 11/17/93. Certificate on file in Forest County - Document No. 151810.

Established Additional Corner Reference:

Maple 7" S15°E 43.66 feet.

5. Quarter corner common to Sections 2 and 3. Corner position monumented by Milo Stefan, RLS, 1986. Certificate on file in Forest County - Document No. 129844.
6. Quarter Corner Common to Sections 1 and 2. Corner position monumented by Milo Stefan, RLS, 1986. Certificate on file in Forest County - Document No. 129845.
7. South sixteenth corner common to Section 2 and 3. Corner position monumented by Milo Stefan, RLS, 1982, Document No. 129814. Alan Harrison, RLS, recovered corner 11/16/93 and established new references.

Corner References:

Spruce 8" N36°E 48.14 feet
 Spruce 8" S09°W 58.38 feet
 Steel Sign Post North 2.6 feet

8. Section corner common to Sections 2, 3, 10 and 11. Corner position monumented by Milo Stefan, RLS, 1982. Certificate on file in Forest County - Document No. 129846.

9. Quarter corner common to Sections 2 and 11. Corner position restored and monumented by Alan Harrison, RLS, 6/27/94. Certificate on file in Forest County - Document No. 151813.
10. Section corner common to Sections 1, 2, 11 and 12. Corner position monumented by Milo Stefan, RLS, 1982. Recovered by Alan Harrison, RLS, 12/14/93. Certificate on file in Forest County - Document No. 151814.

CORNERS ESTABLISHED

1. Northeast sixteenth corner Section 2. Established corner position at the intersection of the north and east 1/16 lines of Section 2. this position falls in the east margin of swamp creek and could not be monumented. Established witness corners 35.00 feet north and 45.00 feet east of corner position.
2. North sixteenth corner common to Sections 1 and 2. Established corner position at proportionate distance from and on line between the east quarter corner and northeast corner of Section 2.

Established Corner References:

Sugar	6"	N18°E	32.10 feet
Basswood	10"	N86°E	43.71 feet
Steel Sign Post		Southeast	1.50 feet

3. Center quarter corner Section 2. Established corner position at the intersection of straight lines between opposing quarter corners on the perimeter of Section 2.

Established Corner References:

Black Spruce	5"	N82°E	22.15 feet
Black Spruce	4"	S09°E	12.43 feet
Steel Sign Post		N60°E	1.80 feet

4. Center-south sixteenth corner Section 2. Established corner position at the mid-point of a straight line between the center and south quarter corners of Section 2.

Established Corner References:

Black Spruce	3"	S24°E	6.84 feet
Black Spruce	4"	S85°W	23.54 feet
Steel Sign Post		S50°W	1.51 feet

5. Southeast sixteenth corner Section 2. Established corner position at the intersection of the south and east sixteenth lines of Section 2.

Established Corner References:

Balsam	8"	S02°W	24.62 feet
Balsam	6"	S74°W	15.91 feet
Steel Sign Post		N60°E	1.99 feet

6. East sixteenth corner common to Sections 2 and 11. Established corner position at the mid-point of a straight line between the south quarter corner and southeast corner of Section 2.

Established Corner References:

Sugar	6"	N15°E	29.04 feet
Sugar	5"	S73°W	22.31 feet
Steel Sign Post		S35°E	1.42 feet

SURVEYOR'S AFFIDAVIT

State of Wisconsin)
County of Forest) ss.

I, John R. Garske, Land Surveyor for Coleman Engineering Company and a registered surveyor in the State of Wisconsin, hereby certify that this survey of Section 2, Township 35 North, Range 15 East, Fourth Principal Meridian, State of Wisconsin, was performed under my direct responsible supervision.

The plat map and the notes herewith are a correct representation of the land surveyed and divided. I have surveyed and subdivided said section in accordance with the rules for survey of the public lands and with the statutes of the State of Wisconsin.

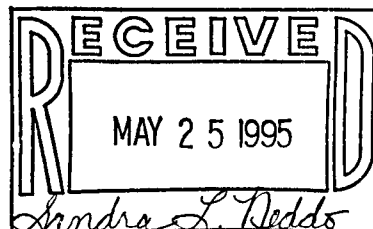


John R. Garske
John R. Garske
Coleman Engineering Company
R.L.S., State of Wisconsin
License No. S-1685

Plat ready for filing:

James S. Stuckler
District Ranger

Date of Survey: 1995



1:08 P.M.