

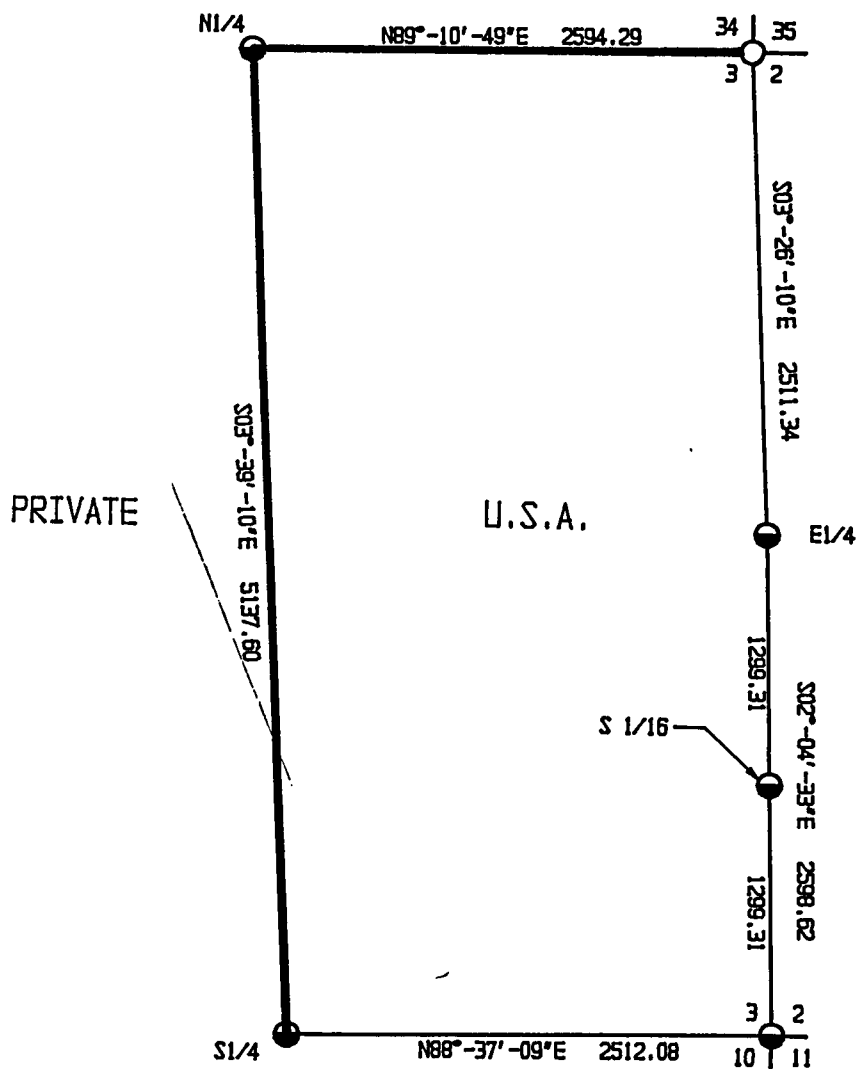
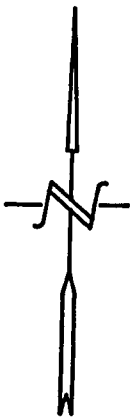
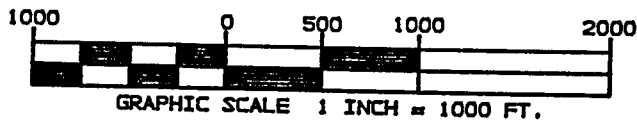
PLAT OF SURVEY

U.S. GOVERNMENT LAND

SHEET 1 OF 3

BEING THE E1/2 OF SECTION 3,
TOWNSHIP 35 NORTH, RANGE 15 EAST
FOURTH PRINCIPAL MERIDIAN

FOREST COUNTY, WISCONSIN



LEGEND

- FOUND ALUMINUM CAPPED PIPE IN PLACE.
- FOUND BRASS CAPPED PIPE IN PLACE.
- BOUNDARY LINE SET TO FOREST SERVICE STANDARDS.

**SECTION 3, T35N-R15E
SURVEY NOTES**

This survey was made by Coleman Engineering Company for the U.S. Department of Agriculture-Forest Service under Contract No. 53-56A6-4-00936, Order No. 43-56A6-4-3062 for the purpose of restoring and establishing corners around the east half of Section 3, and for locating and marking the boundaries of U.S. Government lands within the east half of Section 3, Township 35 North, Range 15 East, Fourth Principal Meridian, Forest County, State of Wisconsin.

The survey is based on U.S.D.A. U.S.-Forest Service GPS survey control completed in 1993 and 1994 and the resulting sectional subdivision therefrom.

The original township line survey was completed by Artemas Curtis in 1857. The township subdivision survey was completed by James McBride in 1859.

The corner positions recovered, restored and established by this survey are marked by the monument described in the map legend.

The corner positions established were located to a minimum accuracy of 1 part in 5000.

The field notes of this survey and a copy of this plat are on file in the Forest Supervisor's office in Rhineland, Wisconsin.

The bearings between corner positions are grid bearings, based on the Wisconsin north zone state plane coordinate system.

Conversions between grid bearings and true bearings are performed by use of the following algebraic formula: true bearing - convergence angle = grid bearing. (close attention to the algebraic sign must be observed, ie: ± of the convergence angle.)

Distances shown are Wisconsin north zone state plane grid distances. Conversion to surface distance is performed by the formula:

$$\text{Grid Distance} \div \left(\text{Grid Scale Factor} \times \frac{20,906,000}{20,906,000 + \text{Mean Elev.}} \right) = \text{Surface Distance}$$

Wisconsin north zone coordinates were computed by USDA - U.S. Forest Service and are based on the 1983 North American Datum.

COORDINATE VALUES ON 1983 NAD

Corner Code	North Latitude	West Longitude	State Plane Coordinates		Convergence Angle	Scale Factor
			North	East		
N 1/4	45° 32' 59.02"	88° 36' 11.63"	142,827.644	2,326,332.154	01° 00' 27.32"	1.000003118
N.E.	45° 32' 58.93"	88° 35' 35.17"	142,864.761	2,328,926.182	01° 00' 53.62"	1.000003122
E 1/4	45° 32' 34.16"	88° 35' 33.68"	140,357.934	2,329,076.696	01° 00' 54.69"	1.000004414
S 1/16	45° 32' 21.34"	88° 35' 33.34"	139,059.475	2,329,123.760	01° 00' 54.94"	1.000004393
S 1/4	45° 32' 08.35"	88° 36' 08.30"	137,700.481	2,326,659.473	01° 00' 29.72"	1.000005774
S.E.	45° 32' 08.51"	88° 35' 33.01"	137,761.016	2,329,170.823	01° 00' 55.18"	1.000005766

CORNERS RECOVERED OR RESTORED

1. Quarter corner common to Sections 3, T35N-R15E and Section 34, T36N-R15E. Corner position monumented by Milo Stefan, RLS, 1983. Certificate on file in Forest County - Document No. 124182.
2. Section corner common to Sections 34 and 35, T36N-R15E and Sections 2 and 3, T35N-R15E. Corner position monumented by William Cochrane, RLS, in 1980 and restored by Alan Harrison, RLS in 1994. Certified on file in Forest County - Document No. 151818.
3. Quarter Corner Common to Sections 2 and 3. Corner position recovered, as monumented by Milo Stefan, RLS, 1986. Certification file in Forest County - Document No. 129844.
4. South sixteenth corner common to Sections 2 and 3. Corner position monumented by Milo Stefan, RLS, in 1982. Document No. 129814. Alan Harrison, RLS, recovered corner on 11/16/93 and established new references:

Corner References:

Spruce	8"	N36°E	48.14 feet
Spruce	8"	S09°W	58.38 feet
Steel Sign Post		North	2.6 feet

5. Quarter corner common to Sections 3 and 10. Corner position monumented by Milo Stefan, RLS, 1983 and restored by Alan Harrison, RLS, 12/14/93. Certificate on file in Forest County - Document No. 151812.
6. Section corner common to Sections 2, 3, 10 and 11. Corner position monumented by Milo Stefan, RLS, 1982. Certificate on file in Forest County - Document No. 129846.

SURVEYOR'S AFFIDAVIT

State of Wisconsin)
 County of Forest) ss.

I, John R. Garske, Land Surveyor for Coleman Engineering Company and a registered surveyor in the State of Wisconsin, hereby certify that this survey of Section 3, Township 35 North, Range 15 East, Fourth Principal Meridian, State of Wisconsin, was performed under my direct responsible supervision.

The plat map and the notes herewith are a correct representation of the land surveyed and divided. I have surveyed and subdivided said section in accordance with the rules for survey of the public lands and with the statutes of the State of Wisconsin.



John R. Garske
 John R. Garske
 Coleman Engineering Company
 R.L.S., State of Wisconsin
 License No. S-1685

Plat ready for filing:

Thomas A. ...
 District Ranger

Date of Survey: 1995

