

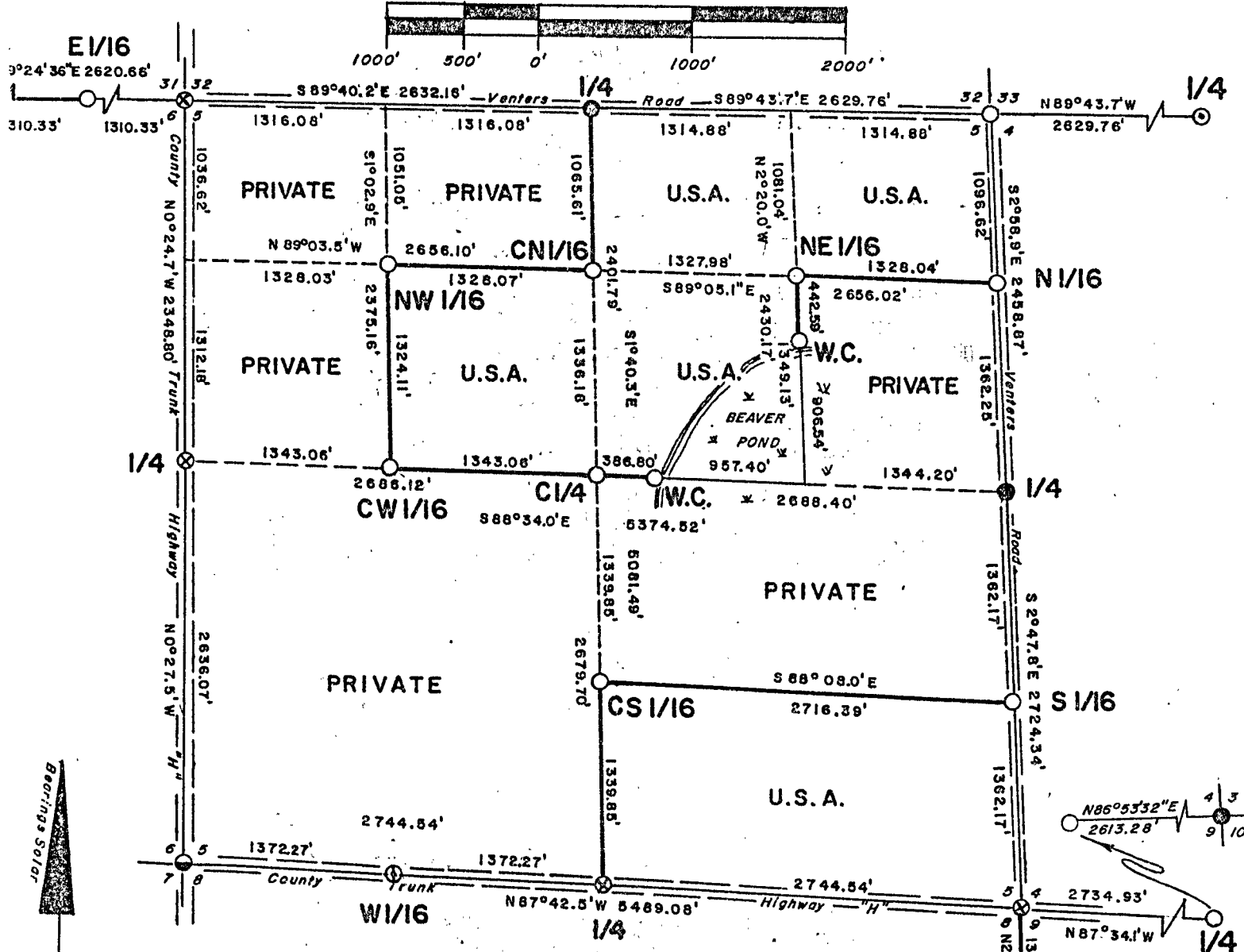
1983

PLAT OF SURVEY U.S. GOVERNMENT LAND

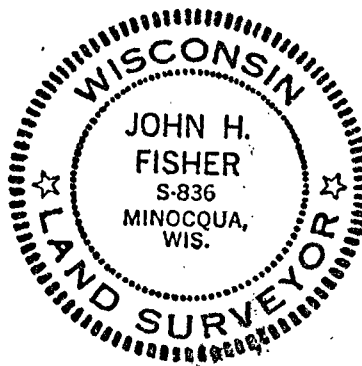
Being the SE 1/4 of the NW 1/4, NW 1/4 of the NE 1/4, NE 1/4 of the NE 1/4, SW 1/4 of the NE 1/4, SW 1/4 of the SE 1/4 and the SE 1/4 of the SE 1/4 of Section 5, Township 35 North, Range 15 East, Fourth Principal Meridian

FOREST COUNTY, WISCONSIN

SCALE 1" = 1000'



NORTH COUNTRY SURVEYORS



John H. Fisher
 John H. Fisher R.L.S. S-836

Dated 10/12/82

LEGEND

- ⊗ = Recovered railroad spike.
- ⊙ = Recovered 1/4" iron pipe
- ⊙ = Recovered 2" iron pipe with brass tablet.
- ⊙ = Recovered 1" iron pipe, replaced with a 2" aluminum pipe capped with a 5" diameter aluminum tablet stamped to identify corner.
- ⊙ = Corner monumented with railroad spike.
- ⊙ = Corner monumented; Set 2" aluminum pipe capped with with a 5" diameter aluminum tablet stamped to identify corner.
- = Line marked by blazed and painted trees and iron sign post set in line.

CONVERSION FACTOR

Feet to Meters: .304801
 Meters to Feet: 3.280833

Stock No. 26273

SURVEY NOTES

This survey was made by North Country Surveyors pursuant to United States Department of Agriculture, Forest Service Contract "No. 53-569R-2-00011, Cadastral Survey" for the purpose of recovering, restoring, establishing, marking and perpetuating the corners and boundary lines of the U. S. Government land on the perimeter and within Section 5, T35N, R15E, Fourth Principal Meridian, Forest County, Wisconsin as shown on the plat herewith.

The original Government survey of the north township line was made by Artemas Curtis, Deputy Surveyor in 1857. The original Government subdivision survey of this township was made by James McBride in 1859.

Extensive work within Section 5 was done by Tom Arnott, Registered Land Surveyor in 1973. Information was obtained from his personal file on monuments set and recovered in that survey.

Bearings between corner positions are true bearings by reference to a solar observation. All distances shown hereon are in feet and hundredths of feet. The control traverse was measured by use of electronic distance measuring equipment to an accuracy of one part in 10,000 or greater. Corners recovered, restored and established by this survey are marked by the monument described in the map legend. Each monumented corner position is referenced to blazed and scribed bearing trees and described reference objects.

CORNERS RECOVERED

1. Corner to Sections 5-6-31-32

Corner monument is a railroad spike set by Tom Arnott in 1973. Monument agrees with the road to the East and old fence to the West.

Corner References

Basswood	9"	N87°W	44.02 feet
Basswood	11"	N70°E	54.60 feet
Sugar Maple	10"	N46°E	59.72 feet

Witness Corner: Set 2" aluminum pipe, 3' long with aluminum tablet stamped to identify monument, N89°24'36"W, 45.00 feet. Steel post with sign set 1.0 feet West of Witness Corner.

Stock No. 26273

2. Corner to Sections 4-5-8-9

Corner monument is a railroad spike set by Tom Arnott in 1973. Monument falls in centerline intersection of County Trunk Highway "H" and Venters Road.

Corner References

Sugar Maple	7"	N37°W	50.60 feet
Sugar Maple	6"	N45°E	46.76 feet
Red Pine	6"	S19°W	52.47 feet

Witness Corner: Set 2" aluminum pipe, 3' long with aluminum tablet stamped to identify monument, South, 33.00 feet. Steel post with sign set 1.0' South of Witness Corner.

3. Quarter Corner to Sections 5 and 32

Corner monument is a 2" aluminum pipe, 3' long with an aluminum tablet stamped to identify the corner set 14" below the surface of Venters Road replacing 1" iron pipe established by Tom Arnott in 1973.

Corner References

Sugar Maple	7"	S30°W	28.92 feet
Sugar Maple	8"	N51°W	45.00 feet
Ash	17"	S39°E	26.67 feet
Steel post with sign set 15' South of Corner			

4. Quarter Corner to Sections 4 and 5

Corner monument is a 2" aluminum pipe, 3' long with an aluminum tablet stamped to identify the corner set in the centerline of Venters Road replacing 1" iron pipe established by Tom Arnott in 1973.

Corner References

Red Maple	8"	N19°E	64.44 feet
Red Maple	6"	S65°E	53.60 feet
Red Maple	7"	S30°E	47.23 feet

5. Quarter Corner to Sections 5 and 8

Corner monument is railroad spike set by Tom Arnott by proportionate measure in 1973. Very old barbed wire fence runs south from corner.

Stock No. 26273

Corner References:

Cedar	5"	N34°W	47.81 feet
Cedar	6"	N17°E	45.61 feet
Cedar	5"	S 2°W	45.20 feet

Witness Corner: 2" aluminum pipe, 5' long with aluminum tablet stamped to identify monument, N1°40'W, 40.00 feet; Steel post with sign set N1°40'W, 1.0 feet from Witness Corner.

6. Quarter Corner to Sections 5 and 6

Corner monument is railroad spike in centerline of County Trunk Highway "H" as established by Jean Resvick in 1965. Old fence line runs West and East.

Witness Corner: 2" iron pipe with brass cap, S86°W, 33.0 feet.

7. Quarter Corner to Section 8 and 9

Corner monument is 2" by 30" aluminum pipe with cap stamped to identify corner, Set in mound of rock.

Corner References:

Sugar Maple	8"	S30°E	10.70 feet
White Spruce	5"	S32°W	20.51 feet
White Spruce	13"	N43°W	32.39 feet

8. Corner to Section 3, 4, 9 and 10

Corner monument is a 2" galvanized iron pipe, 5' long with brass tablet stamped to identify corner.

Stock No. 26273

Corner References:

Tamarack	6"	S31°30'E	36.90 feet
Spruce	6"	S25°30'E	26.80 feet
Spruce	5"	N30°W	14.35 feet
Tamarack	4"	N65°E	13.65 feet

CORNERS ESTABLISHED

1. Corner to Sections 4-5-32-33

Corner monument is 2" aluminum pipe, 3 feet in length with aluminum tablet stamped to identify the corner. Corner was set by single proportionate measure between quarter corner to Sections 4 and 33 and the quarter corner to Sections 5 and 32.

Corner References:

White Ash	16"	N57°W	51.47 feet
Sugar Maple	8"	S42°E	25.23 feet
Sugar Maple	7"	S44°E	26.10 feet
Steel post with sign set, East 4.3 feet			

2. Quarter Corner to Sections 4 and 9

Corner monument is 2" aluminum pipe, 3 feet in length with aluminum tablet stamped to identify the corner. Corner was set on extension of centerline of County Trunk Highway "H" from the West and South and old blazed lines from the East and the North

Stock No. 26273

Corner References

Sugar Maple	4"	S24°E	3.53 feet
Sugar Maple	4"	S81°E	11.05 feet
Sugar Maple	6"	N45°E	20.03 feet
Steel post with sign set N55°W, 0.65 feet.			

3. Center Quarter Corner of Section 5

Corner monument is 2" aluminum pipe, 3' feet in length with aluminum tablet stamped to identify corner. Corner set at the intersection of the quarter lines.

Corner References

Scotch Pine	7"	S79°W	12.55 feet
Red Pine	10"	N 5°E	17.33 feet
Red Pine	13"	N63°E	35.84 feet
Steel post with sign set West, 2.7 feet.			

4. West Sixteenth to Section 5 and 8

Corner monument is a railroad spike set on line and equidistant between Section Corner 5-6-7-8 and Quarter Corner 5 and 8

Corner References

Balsam	5"	N52°W	74.45 feet
Elm	5"	N58°E	68.77 feet
Tamarack	5"	S55°W	70.73 feet

Witness Corner: 2" aluminum pipe with aluminum tablet stamped to identify corner, South, 40.00 feet. Steel post with sign set 0.7 feet South of Witness Corner.

5. South Sixteenth to Sections 4 and 5

Corner monument is 2" aluminum pipe, 3' in length with aluminum tablet stamped to identify corner. Corner set on line and equidistant between Section Corner 4-5-8-9 and Quarter Corner 4 and 5.

Corner References

Red Pine	10"	S36°W	41.13 feet
Red Maple	8"	N64°E	28.17 feet
White Spruce	10"	N25°E	50.12 feet
Steel post with sign set West, 22.5 feet			

Stock No. 26273

6. North Sixteenth to Section 4 and 5

Corner monument is 2" aluminum pipe, 3' in length with aluminum tablet stamped to identify corner. Corner set on line and by single proportionate measure between Section Corner 4-5-32-33 and Quarter Corner to Section 4 and 5.

Corner References

Sugar Maple	5"	N51°E	26.33 feet
Sugar Maple	6"	S74°E	19.30 feet
Sugar Maple	8"	S47°W	27.06 feet
Steel post with sign set West, 17.5 feet			

7. Center - South Sixteenth Corner to Section 5

Corner monument is 2" aluminum pipe, 5' in length with aluminum tablet stamped to identify corner. Corner set on line and equidistant between the Center Quarter Corner and the Quarter Corner to Sections 5 and 8.

Corner References

Cedar	10"	N88°E	23.78 feet
Cedar	10"	S78°E	24.30 feet
Black Spruce	8"	S25°E	30.50 feet
Steel post with sign set South, 2.0 feet.			

8. Center - North Sixteenth Corner to Section 5

Corner monument is 2" aluminum pipe, 3' in length with aluminum tablet stamped to identify corner. Corner set on line and by single proportionate measure between the Center Quarter Corner and the Quarter Corner to Sections 5 and 32.

Corner References

Red Pine	7"	N40°E	6.99 feet
Red Pine	11"	S52°E	14.88 feet
Red Pine	12"	S 7°W	12.19 feet
Steel post with sign set West, 0.7 feet.			

9. Center - West Sixteenth Corner Section 5

Corner monument is 2" aluminum pipe, 3' in length with aluminum tablet stamped to identify corner. Corner set on line and equidistant between the Center Quarter Corner and the Quarter Corner to Sections 5 and 6.

Corner References

Red Pine	7"	S64°W	12.24 feet
Red Pine	13"	N67°E	21.34 feet
Red Pine	9"	N 4°E	22.85 feet
Steel post with sign set East, 1.2 feet			

Stock No. 26273

10. North Witness Corner to Center - East Sixteenth Section 5

Corner monument is 2" aluminum pipe, 3' in length with aluminum tablet stamped to identify corner. Corner set on sixteenth line and at edge of wet area 906.54 feet north of Center - East sixteenth location.

Corner References

Red Pine	14"	S13°W	26.70 feet
Red Pine	14"	S52°W	15.71 feet
Red Pine	10"	N53°W	41.38 feet
Steel post with sign set South, 1.0 feet.			

11. West Witness Corner to Center - East Sixteenth Section 5

Corner monument is 2" aluminum pipe, 3' in length with aluminum tablet stamped to identify corner. Corner set on E - W 1/4 line and at edge of wet area 957.40 feet West of Center - East Sixteenth location.

Corner References

Scotch Pine	6"	S82°W	26.47 feet
Red Pine	10"	N34°W	34.19 feet
Red Pine	13"	N16°E	30.33 feet
Steel post with sign set N66°W, 2.0 feet.			

12. Northeast Sixteenth Corner Section 5

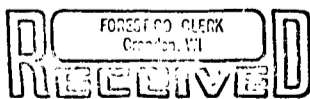
Corner monument is 2" aluminum pipe, 3' in length with aluminum tablet stamped to identify corner. Corner set at intersection of sixteenth lines in the Northeast Quarter of Section 5.

Corner References

Sugar Maple	9"	N65°W	42.20 feet
Sugar Maple	8"	S88°E	54.26 feet
Black Cherry	10"	S62°E	38.29 feet
Steel post with sign set South, 1.5 feet.			

13. Northwest Sixteenth Corner Section 5

Corner monument is 2" aluminum pipe, 3' in length with aluminum tablet stamped to identify corner. Corner set at intersection of sixteenth lines in the Northwest Quarter of Section 5.



FEB 14 1983

Dora C. James

Stock No. 26273

Corner References

Red Pine	11"	S19°E	18.95 feet
Red Pine	11"	S55°E	22.12 feet
Red Pine	13"	N86°E	35.40 feet
Steel post with sign set South, 1.2 feet			

14. East Sixteenth Corner to Sections 6 and 31

Corner monument is 2" aluminum pipe, 3' in length with aluminum tablet stamped to identify corner. Corner set on line and equidistant between the Quarter Corner to Sections 6 and 31 and the Corner to Sections 5-6-31-32.

Corner References

Sugar Maple	8"	N78°W	30.27 feet
Sugar Maple	5"	S 5°E	3.71 feet
Sugar Maple	6"	N28°E	28.71 feet
Steel post with sign set West, 1.4 feet.			

15. North Sixteenth to Sections 8 and 9

Corner monument is 2" aluminum pipe, 5' in length with aluminum tablet stamped to identify corner. Corner set on line and equidistant between the Quarter Corner to Sections 8 and 9 and the Corner to Sections 4-5-8-9.

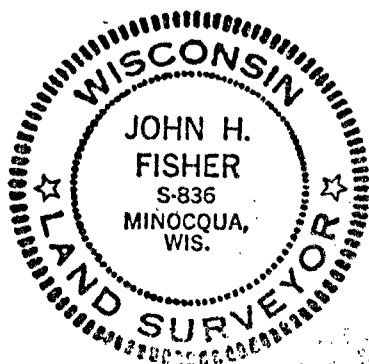
Corner References

Tamarack	6"	N45°E	18.55 feet
Black Spruce	6"	S76°W	16.96 feet
Yellow Birch	7"	S34°E	15.06 feet
Steel post with sign set South, 1.0 feet.			

SURVEYOR'S AFFIDAVIT

State of Wisconsin)
County of Forest)^{ss}

I, John H. Fisher, Land Surveyor, registered in the State of Wisconsin, hereby certify that I have surveyed and subdivided Section 5, T35N, R15E, Fourth Principal Meridian, County of Forest, State of Wisconsin, in accordance with the rules for the survey of the public lands and with the statutes of the State of Wisconsin. The plat map and survey notes are an accurate representation of the corners recovered and established.



John H. Fisher 10/12/82
Registered Land Surveyor, State of Wisconsin

Certificate No. S-836

Date of Survey; March - October 1982

NOTE: "The field survey notes and a copy of the plat of survey are on file in the Forest Supervisor's Office in Rhinelander, Wisconsin."