



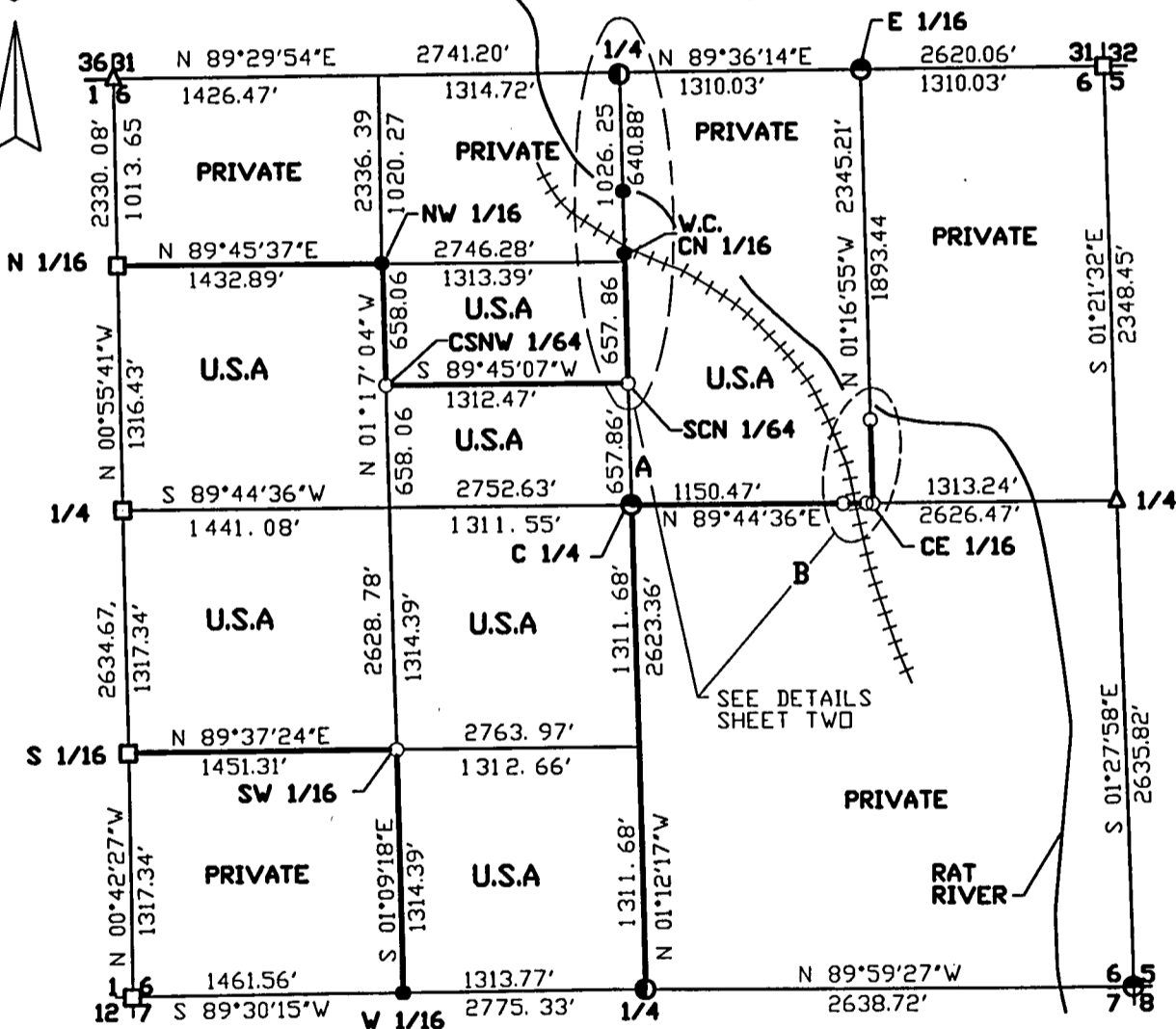
Stock No. 26273

# PLAT OF SURVEY

U. S. GOVERNMENT LAND

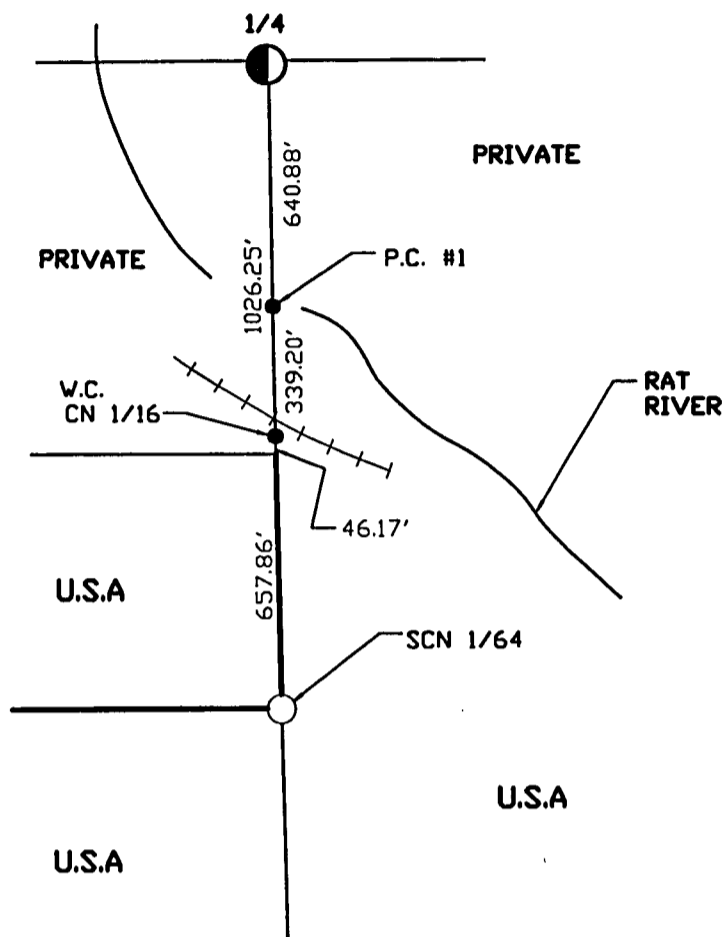
Being the SW 1/4 and SE 1/4, of the NW 1/4 and NW 1/4, NE 1/4 and SE 1/4, of the SW 1/4 and the W 1/2 of the NE 1/4 Lying South of the Rat River of Section 6, Township 35 North, Range 15 East, Fourth Principal Meridian

FOREST COUNTY, WISCONSIN

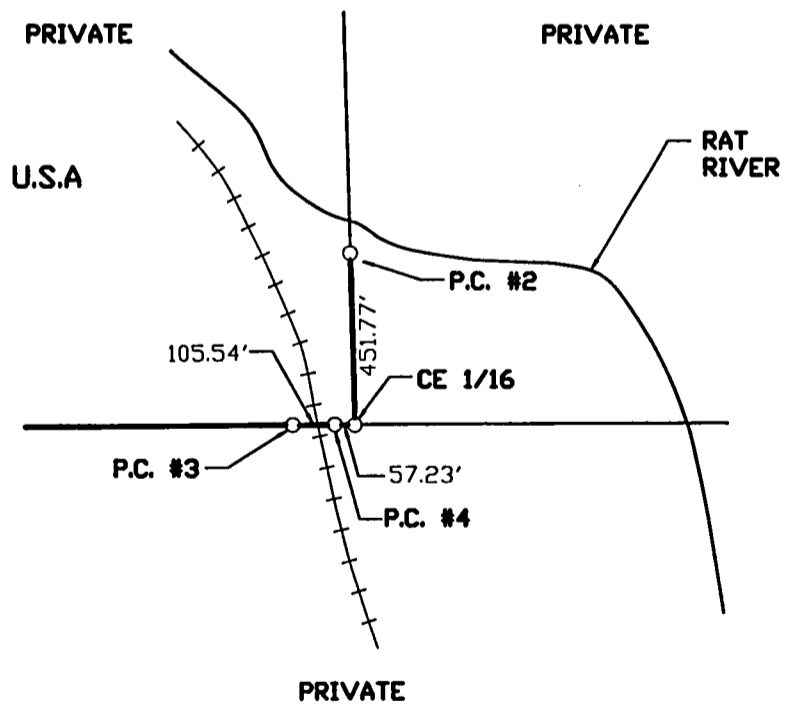


### LEGEND

- 1' ALUMINUM MONUMENT WITH CAP - FOUND IN PLACE
- RAILROAD SPIKE - FOUND IN PLACE
- △ P. K. NAIL - FOUND IN PLACE
- ⊙ 2-1/2' ALUMINUM MONUMENT WITH CAP - FOUND IN PLACE
- ⊙ 2' IRON PIPE WITH BRASS CAP - FOUND IN PLACE
- 1"X36' ALUMINUM MONUMENT WITH CAP - SET THIS SURVEY
- BOUNDARY LINE SET TO FOREST SERVICE STANDARDS



DETAIL A



DETAIL B





Stock No. 26273

SHEET 3 OF 6

**SECTION 6, T35N-R15E**  
**SURVEY NOTES**

This survey was made by Coleman Engineering Company for the U.S. Department of Agriculture-Forest Service under Contract No. 53-56A6-4-00936, Order No. 43-56A6-5-0098 for the purpose of restoring and establishing corners on the perimeter of Section 6, for establishing subdivisional corners within Section 6, and for locating and marking the boundaries of U.S. Government lands along the perimeter and within Section 6, Township 35 North, Range 15 East, Fourth Principal Meridian, Forest County, State of Wisconsin.

The survey is based on U.S.D.A., U.S. Forest Service GPS survey control completed in 1994 and the resulting sectional subdivision therefrom.

The original township line survey was completed by Artemas Curtis in 1857. The township subdivision survey was completed by James McBride in 1859.

The corner positions recovered, restored and established by this survey are marked by the monument described in the map legend.

The corner positions established were located to a minimum accuracy of 1 part in 5000.

The field notes of this survey and a copy of this plat are on file in the Forest Supervisor's office in Rhinelander, Wisconsin.

Conversions between grid bearings and true bearings are performed by use of the following algebraic formula: true bearing - convergence angle = grid bearing. (close attention to the algebraic sign must be observed, ie:  $\pm$  of the convergence angle.)

Distances shown are Wisconsin north zone state plane grid distances. Conversion to surface distance is performed by the formula:

$$\frac{\text{Grid Distance}}{\frac{\text{Grid Scale Factor X } 20,906,000}{20,906,000 + \text{Mean Elev.}}} = \text{Surface Distance}$$

Wisconsin north zone coordinates were computed by USDA - U.S. Forest Service and are based on the 1983 North American Datum.

**COORDINATE VALUES ON 1983 NAD**

Corner Code	North Latitude	West Longitude	State Plane Coordinates		Convergence Angle	Scale Factor
			North	East		
NW	45°-33'-00.23"	88°-40'-31.60"	142,633.111	2,307,831.792	00°-57'-19.79"	1.000003055
N 1/4	45°-33'-00.01"	88°-39'-53.08"	142,657.116	2,310,572.884	00°-57'-47.57"	1.000003066
E 1/16	45°-32'-59.88"	88°-39'-34.67"	142,666.170	2,311,882.882	00°-58'-00.85"	1.000003073
NE	45°-32'-59.75"	88°-39'-16.26"	142,675.224	2,313,192.880	00°-58'-14.13"	1.000003080
N 1/16	45°-32'-50.22"	88°-40'-31.60"	141,619.596	2,307,848.209	00°-57'-19.78"	1.000003575
NW 1/16	45°-32'-50.04"	88°-40'-11.47"	141,625.592	2,309,281.083	00°-57'-34.31"	1.000003584
CN 1/16	45°-32'-49.88"	88°-39'-53.02"	141,631.089	2,310,594.463	00°-57'-47.62"	1.000003593
CSNW 1/64	45°-32'-43.55"	88°-40'-11.42"	140,967.694	2,309,295.835	00°-57'-34.34"	1.000003923



Stock No. 26273

SHEET 4 OF 6

Corner Code	North Latitude	West Longitude	State Plane Coordinates		Convergence Angle	Scale Factor
			North	East		
SCN 1/64	45°-32'-43.39"	88°-39'-52.98"	140,973.379	2,310,608.294	00°-57'-47.65"	1.000003931
W 1/4	45°-32'-37.22"	88°-40'-31.61"	140,303.342	2,307,869.531	00°-57'-19.78"	1.000004253
CW 1/16	45°-32'-37.05"	88°-40'-11.37"	140,309.795	2,309,310.587	00°-57'-34.38"	1.000004262
C 1/4	45°-32'-36.89"	88°-39'-52.94"	140,315.669	2,310,622.128	00°-57'-47.67"	1.000004271
CE 1/16	45°-32'-36.73"	88°-39'-34.49"	140,321.550	2,311,935.352	00°-58'-00.98"	1.000004279
E 1/4	45°-32'-36.57"	88°-39'-16.04"	140,327.431	2,313,248.575	00°-58'-14.29"	1.000004288
S 1/16	45°-32'-24.22"	88°-40'-31.69"	138,986.106	2,307,885.796	00°-57'-19.72"	1.000004936
SW 1/16	45°-32'-24.07"	88°-40'-11.30"	138,995.649	2,309,337.080	00°-57'-34.43"	1.000004944
SW	45°-32'-11.21"	88°-40'-31.77"	137,668.871	2,307,902.063	00°-57'-19.66"	1.000005623
W 1/16	45°-32'-11.10"	88°-40'-11.24"	137,681.522	2,309,363.572	00°-57'-34.47"	1.000005629
S 1/4	45°-32'-10.99"	88°-39'-52.78"	137,692.893	2,310,677.289	00°-57'-47.78"	1.000005634
SE	45°-32'-10.55"	88°-39'-15.72"	137,692.477	2,313,316.012	00°-58'-14.52"	1.000005658

#### CORNERS RECOVERED OR RESTORED

1. Section Corner Common to Section 6, T35N, R15E, Section 1, T35N, R14E, Section 36, T36N, R14E and Section 31, T36N, R15E. Recovered corner as recorded by Jean Resvick in 1977, on record in Forest County Courthouse, Document No. 111432. Typical Wisconsin Department of Transportation restored corners in 1985.
2. Quarter Corner Common to Section 6, T35N, R15E and Section 31, T36N, R15E. Corner position recovered as described by U.S.F.S. survey crew. This corner will be recorded by Alan Harrison or on file at the Laona Ranger Station.
3. East Sixteenth Corner Common to Section 6, T35N, R15E and Section 31, T36N, R15E Corner position recovered as described by U.S.F.S. survey crew. This corner will be recorded by Alan Harrison or on file at the Laona Ranger Station.
4. Section Corner Common to Sections 6 and 5, T35N, R15E and Sections 31 and 32, T36N, R15E. Corner position recovered as described by U.S.F.S. survey crew. This corner will be recorded by Alan Harrison or on file at the Laona Ranger Station.
5. North Sixteenth Corner Common to Section 6, T35N, R15E and Section 1, T35N, R14E. Corner position recovered as described by U.S.F.S. survey crew. This corner will be recorded by Alan Harrison or on file at the Laona Ranger Station.
6. Northwest Sixteenth Corner of Section 6, T35N, R15E. Corner position recovered as described by U.S.F.S. survey crew. This corner will be recorded by Alan Harrison or on file at the Laona Ranger Station.
7. Center North Sixteenth Corner Section 6, T35N, R15E. Corner position recovered as described by U.S.F.S. survey crew. This corner will be recorded by Alan Harrison or on file at the Laona Ranger Station.
8. Quarter Corner Common to Section 6, T35N, R15E and Section 1, T35N, R14E. Corner position recovered as described by U.S.F.S. survey crew. This corner will be recorded by Alan Harrison or on file at the Laona Ranger Station. Typical Wisconsin Department of Transportation restored corners in 1985.
9. Center Quarter Corner of Section 6, T35N, R15E. Corner position recovered as described by U.S.F.S. survey crew. This corner will be recorded by Alan Harrison or on file at the Laona Ranger Station.



Stock No. 26273

SHEET 5 OF 6

10. Quarter Corner Common to Sections 6 and 5, T35N, R15E. Corner position recovered as described by U.S.F.S. survey crew. This corner will be recorded by Alan Harrison or on file at the Laona Ranger Station.
11. South Sixteenth Corner Common to Section 6, T35N, R15E and Section 1, T35N, R14E. Corner position recovered as described by U.S.F.S. survey crew. This corner will be recorded by Alan Harrison or on file at the Laona Ranger Station.
12. Section Corner Common to Sections 6 and 7, T35N, R15E and Sections 1 and 12, T35N, R14E. Recovered corner as recorded by Milo Stefan in 1989, on record in Forest County Courthouse, Document No. 138169. Typical Wisconsin Department of Transportation restored corners in 1985.
13. West Sixteenth Corner Common to Sections 6 and 7, T35N, R15E. Corner position recovered as described by U.S.F.S. survey crew. This corner will be recorded by Alan Harrison or on file at the Laona Ranger Station.
14. Quarter Corner Common to Sections 6 and 7, T35N, R15E. Recovered corner as recorded by Milo Stefan in 1989, on record in Forest County Courthouse, Document No. 138170.
15. Section Corner Common to Sections 6, 5, 8 and 7, T35N, R15E. Recovered corner as recorded by Milo Stefan in 1989, on record in Forest County Courthouse, Document No. 138171.

#### CORNERS ESTABLISHED

1. Center South Northwest Sixty-Fourth Corner of Section 6, T35N, R15E. Established corner position at the mid-point of a straight line between the northwest sixteenth corner and the center-west sixteenth corner.

Established Corner References:

Cedar 9"	N02°E	63.60 Feet
Tamarack 9"	S83°E	51.05 Feet
Steel Sign Post	S45°W	0.81 Feet

2. South Center North Sixty-Fourth Corner of Section 6, T35N, R15E. Established corner position at the mid-point of a straight line between the center north sixteenth corner and the center quarter corner.

Established Corner References:

Sugar 8"	N76°E	10.71 Feet
Sugar 8"	N15°W	17.49 Feet
Steel Sign Post	S45°E	0.96 Feet

3. Center East Sixteenth Corner of Section 6, T35N, R15E. Established corner position at the mid-point of a straight line between the center quarter corner and the east quarter corner.

Established Corner References:

Black Spruce 4"	N81°E	24.90 Feet
Sugar 6"	S42°W	33.19 Feet
Steel Sign Post	N45°W	1.00 Feet

4. Southwest Sixteenth Corner of Section 6, T35N, R15E. Established corner position at the intersection of the north-south, east-west sixteenth lines of the southwest quarter.

Established Corner References:

Cedar 6"	S53°E	36.89 Feet
Balsam 7"	S88°W	43.65 Feet
Steel Sign Post	N45°E	1.26 Feet



Stock No. 26273

SHEET 6 OF 6

PROPERTY CORNER INFORMATION

PC #1

This point was set by the U.S.F.S. survey crew under the direction of Alan Harrison.

PC #2

Set 1" x 36" aluminum monument on a straight line between the (E 1/16 between Section 6, T35N, R15E and Section 31, T36N, R15E and CE 1/16) this point is 451.77 feet north of the CE 1/16 and 11± feet south of the right bank of the Rat River.

PC #3

Set 1" x 36" aluminum monument on a straight line between the C 1/4 and CE 1/16, this point is 162.77 feet west of the CE 1/16 and was placed on the west right-of-way of railroad being 50.00 feet perpendicular from centerline.

PC #4

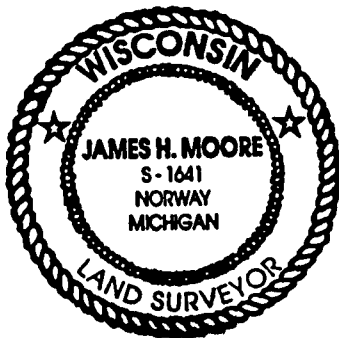
Set 1" x 36" aluminum monument on a straight line between the C 1/4 and CE 1/16, this point is 57.23 feet west of the CE 1/16 and was placed on the east right-of-way of railroad being 50.00 feet perpendicular from centerline.

SURVEYOR'S AFFIDAVIT

State of Wisconsin )  
 County of Forest ) ss.

I, James H. Moore, Land Surveyor for Coleman Engineering Company of Iron Mountain and a registered surveyor in the State of Wisconsin, hereby certify that this survey of Section 6, Township 35 North, Range 15 East, Fourth Principal Meridian, State of Wisconsin, was performed under my direct responsible supervision.

The plat map and the notes herewith are a correct representation of the land surveyed and divided. I have surveyed and subdivided said section in accordance with the rules for survey of the public lands and with the statutes of the State of Wisconsin.



*James H. Moore*

James H. Moore  
 Coleman Engineering Company of Iron Mountain  
 R.L.S., State of Wisconsin  
 License No. S-1641

Plat ready for filing:

*David S. Muecke*  
 District Ranger

Date of Survey: August 15, 1995

