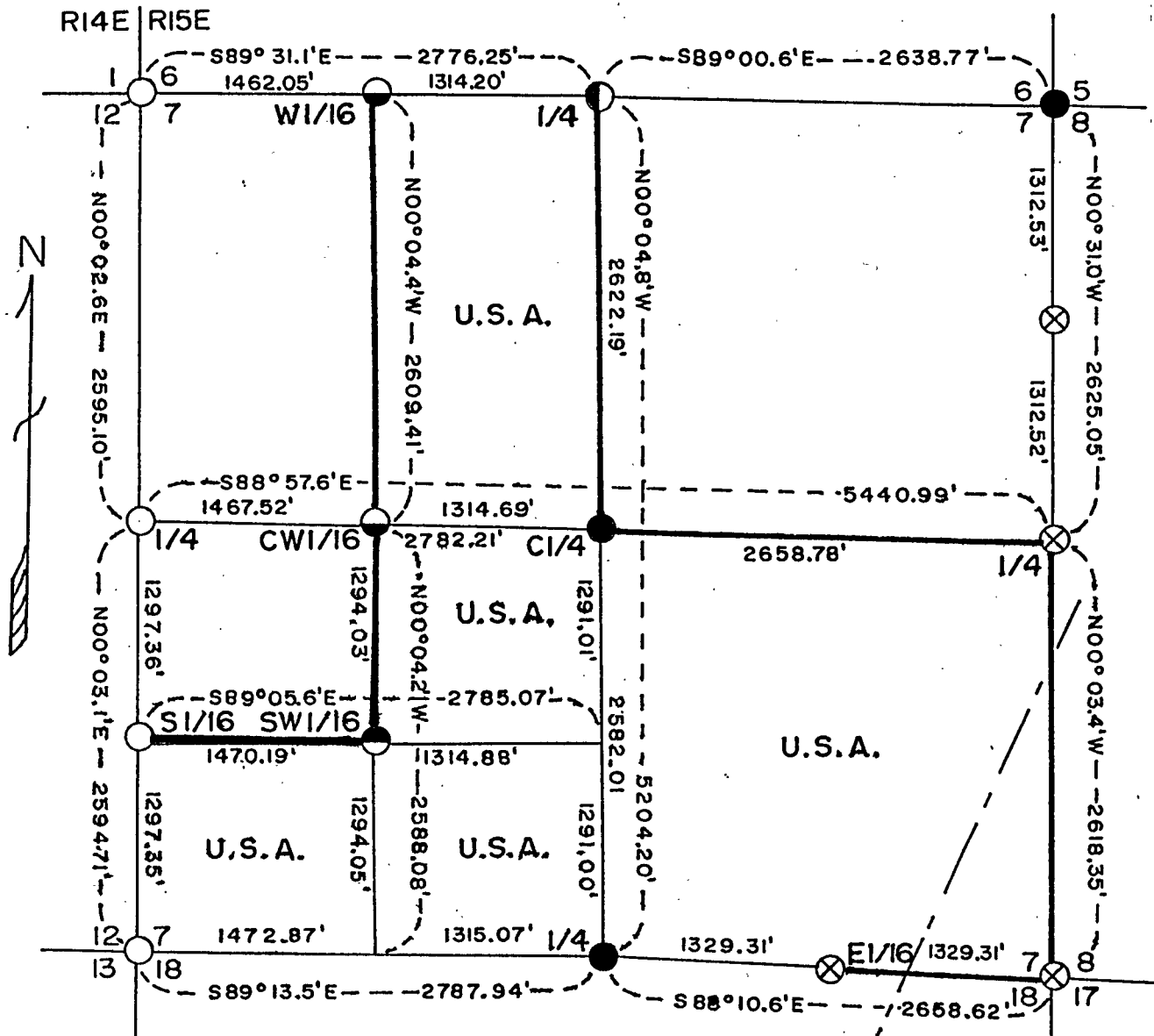


PLAT OF SURVEY U.S. GOVERNMENT LAND

Being the E1/2, NW1/4; SE1/4; S1/2, SW1/4; and the
NE1/4, SW1/4; Section 7

Township 35 North, Range 15 East, Fourth Principal Meridian
FOREST COUNTY, WISCONSIN



- Railroad Spike in Road Surface
- ⊗ 3/4" X 24" Iron Rod Below Road Surface
- 2 1/2" Aluminum Monument, 36" Long
- ◐ 1" Aluminum Monument, 36" Long
- ◑ 1" Aluminum Monument, 60" Long
- ◒ 2" Iron Pipe Monument, 60" Long

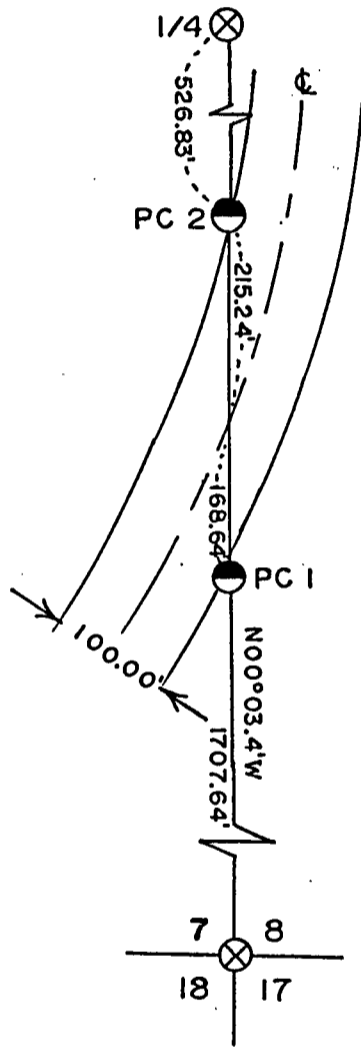
See "DETAILS" Page 2
For Railroad R-O-W

CONVERSION FACTORS:
Feet to Meters - 3.280833
Meters to Feet - 0.304801

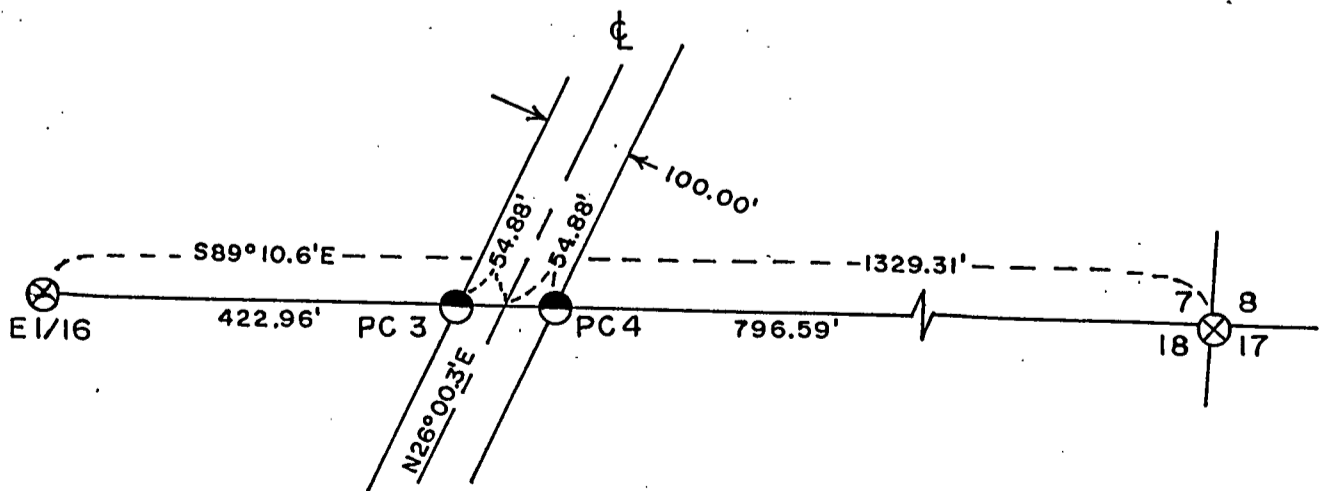
— Marked Boundary Lines, U.S. Government Lands

DETAILS

Railroad R-O-W SE 1/4 Section 7



Railroad R-O-W



Stock No. 26273

Sheet 3 of 7

SURVEY NOTES

This survey was made by Milo E. Stefan, a private land surveyor, RLS #1558, under contract with the U. S. Department of Agriculture, Forest Service, for the purpose of restoring and establishing corners on the perimeter of Section 7; for establishing subdivisional corners within Section 7 and for locating and marking the boundaries of U. S. Government lands on the perimeter and within Section 7, Township 35 North, Range 15 East, Fourth Principal Meridian, Forest County, Wisconsin.

The U. S. Government lands in this section were acquired from 1935 - 1962.

The original government subdivision survey of this township was made by James McBride in 1859. The range line was established by Artemas Curtis in 1857.

The corner positions recovered, restored and established by this survey are marked by the monument described in the map legend. They are also placed within an accuracy of one part in 3000 or better.

The bearings between corner positions are true bearings as determined by a solar observation.

The field notes of this survey and a copy of the plat are on file in the Forest Supervisor's Office at Rhinelander, Wisconsin.

CORNERS RECOVERED AND RESTORED1. Section Corner to Sections 6, 7, 1 and 12, T35N, R15-14E.

Corner position restored from Forest Service and Department of Transportation reference monuments. A railroad spike was placed for the corner.

Corner References:

Forest Service Brass Cap (1965)	East	114.00 feet
Forest Service Brass Cap (1980)	N88°-32.6'W	86.00 feet
(WC #4) DOT Aluminum Monument (1985)	N58°-52'W	52.74 feet
(WC #1) DOT Aluminum Monument (1985)	N46°-44'E	94.38 feet
(WC #2) DOT Aluminum Monument (1985)	S58°-52'E	78.08 feet
(WC #3) DOT Aluminum Monument (1985)	S46°-44'W	68.29 feet
Steel Sign Post SW of DOT WC #3		.68 feet

2. Section Corner to Sections 5, 6, 7 and 8, T35N, R15E.

Corner position found marked by a 1" x 24" iron pipe with two Forest Service reference monuments. A 2 1/2" x 36" aluminum monument replaced the iron pipe.

Corner References:

Forest Service Brass Cap in 6" x 60" Concrete Post	Southwest	38.00 feet
Forest Service Aluminum Monument in Mound of Stone	Southeast	49.90 feet
White Spruce 18"	N83°E	127.00 feet
SE Corner of Cabin Foundation	N55°W	119.50 feet
Steel Sign Post SE of SE Reference Mark		.77 feet

Stock No. 26273

Sheet 4 of 7

3. Section Corner to Sections 7, 8, 17 and 18, T35N, R15E.

Corner position restored at intersection of roads east, west and south. Fence line northerly. Corner marked by a 3/4" x 24" iron rod.

Corner References:

Reference Monument		North	25.00 feet
Basswood	6"	S78°E	96.88 feet
White Birch	5"	S52°W	45.14 feet
Red Pine	14"	N69°W	138.94 feet
Red Pine	14"	N11°W	172.43 feet
Steel Sign Post		NW of R.M.	.65 feet

4. Section Corner to Sections 7, 12, 13 and 18, T35N, R15E.

Corner position restored from Forest Service and Department of Transportation reference monuments. A railroad spike was placed for the corner.

Corner References:

Forest Service Brass Cap (1980)		N89°-18.3'W	91.00 feet
(WC #1) DOT Aluminum Monument (1985)		N52°-51'E	69.68 feet
(WC #2) DOT Aluminum Monument (1985)		S66°-05'E	60.04 feet
(WC #3) DOT Aluminum Monument (1985)		S52°-51'W	73.96 feet
(WC #4) DOT Aluminum Monument (1985)		N66°-05'W	71.22 feet
Steel Sign Post SE of DOT WC #2			.47 feet

5. Quarter Corner to Sections 7 and 12, T35N, R15E.

Corner position restored from Forest Service and Department of Transportation reference monuments. A railroad spike was placed for the corner.

Corner References:

Forest Service Brass Cap (1980)		N88°-55.1'W	89.00 feet
(WC #1) DOT Aluminum Monument (1985)		S51°-10'W	41.11 feet
(WC #2) DOT Aluminum Monument (1985)		N61°-04'W	49.81 feet
(WC #3) DOT Aluminum Monument (1985)		N51°-10'E	81.63 feet
(WC #4) DOT Aluminum Monument (1985)		S61°-04'E	76.79 feet
Steel Sign Post SW of DOT WC #1			.43 feet

6. Quarter Corner to Sections 6 and 7, T35N, R15E.

Corner monument found removed as set by Forest Service Surveyor, Jean Resvick in 1965. Corner monument was restored from original bearing tree remains and from the Resvick notes.

Corner References:

Black Spruce	4"	N33°E	13.39 feet
Black Spruce	4"	S32°E	21.41 feet
Black Spruce	6"	S20°W	26.46 feet
Black Spruce	6"	N24°W	20.30 feet
Steel Sign Post		Northwest	1.70 feet

7. Quarter Corner to Sections 7 and 8, T35N, R15E.

Corner position found marked by a 1 1/2" x 12" iron pipe 6" below road surface. Corner position marked by a 3/4" x 24" iron rod.

Corner References:

Reference Monument		East	25.00 feet
Cedar	8"	N31°E	47.70 feet
Red Maple	4"	S23°E	39.06 feet
Red Pine	12"	S61°W	65.83 feet
Tamarack	10"	N56°W	75.00 feet
Steel Sign Post		East	24.00 feet

Stock No. 26273

Sheet 5 of 7

8. Quarter Corner to Sections 7 and 18, T35N, R15E.

Corner position restored from remains of original bearing trees.

Corner References:

Black Ash	8"	N22°E	17.54 feet
Black Ash	6"	S86°E	24.62 feet
Sugar Maple	8"	S66°W	70.55 feet
Sugar Maple	6"	N32°W	19.79 feet
Steel Sign Post		Northeast	1.31 feet
Iron Pipe		N50°E	12.46 feet

CORNERS ESTABLISHED1. Center Quarter Corner to Section 7, T35N, R15E.

Corner position established at the intersection of straight lines between opposing Quarter Corners on the exterior of Section 7.

Corner References:

Red Pine	16"	S26°E	28.23 feet
Red Pine	14"	S34°W	23.76 feet
Steel Sign Post		Southwest	1.28 feet
2" Iron Pipe at Fence Corner		S11°E	15.9 feet

2. West Sixteenth Corner to Sections 6 and 7, T35N, R15E.

Corner position established at the proportioned distance and on line between the North Quarter Corner and Northwest Section Corner to Section 7.

Corner References:

Black Spruce	8"	N34°E	3.54 feet
Black Spruce	8"	N75°W	10.97 feet
Steel Sign Post		Southeast	.95 feet

3. South Sixteenth Corner to Sections 7 and 12, T35N, R14-15E.

Corner position established at midpoint and on line between the West Quarter Corner and Southwest Section Corner to Sections 7.

Corner References:

Reference Monument		S89°-06.6'E	66.05 feet
Red Pine	14"	S37°W	109.84 feet
Red Pine	12"	N42°W	86.41 feet
Steel Sign Post		East of R.M.	.87 feet

4. East Sixteenth Corner to Sections 7 and 18, T35N, R15E.

Corner position established at midpoint and on line between the South Quarter Corner and Southeast Section Corner to Section 7.

Corner References:

Reference Monument		S0°-16.6'W	25.00 feet
Sugar Maple	8"	N20°E	45.40 feet
Sugar Maple	8"	S18°W	36.52 feet
Yellow Birch	8"	S8°E	19.12 feet
Steel Sign Post		SE of R.M.	.99 feet

Stock No. 26273

Sheet 6 of 7

5. Center West Sixteenth Corner to Section 7, T35N, R15E.

Corner position established at proportioned distance and on line between the West and Center Quarter Corners to Section 7.

Corner References:

Red Maple	7"	N10°E	53.26 feet
Cedar	8"	S37°E	32.70 feet
Steel Sign Post		Southeast	.62 feet

6. Southwest Sixteenth Corner to Section 7, T35N, R15E.

Corner position established at the intersection of the South and West Sixteenth Lines to Section 7.

Corner References:

Red Pine	14"	S8°W	14.41 feet
Red Pine	16"	N39°W	10.21 feet
Steel Sign Post		Southeast	.89 feet

7. Property Corner #1

Corner position established at the intersection of the section line with the south edge of a 100 foot railroad right-of-way.

Corner References:

Black Cherry	7"	S13°W	39.92 feet
Black Cherry	7"	N69°W	26.69 feet
Steel Sign Post		Southwest	1.36 feet

8. Property Corner #2

Corner position established at the intersection of the section line with the north edge of a 100 foot railroad right-of-way.

Corner References:

Cedar	8"	N8°E	63.54 feet
Red Pine	12"	N77°W	60.59 feet
Steel Sign Post		Southwest	1.03 feet

9. Property Corner #3

Corner position established at the intersection of the section line with the west edge of a 100 foot railroad right-of-way.

Corner References:

Sugar Maple	4"	S88°W	81.65 feet
Sugar Maple	6"	N33°W	47.12 feet
Steel Sign Post		Southwest	1.00 feet

10. Property Corner #4

Corner position established at the intersection of the section line with the east edge of a 100 foot railroad right-of-way.

Corner References:

Red Pine	12"	N60°E	63.59 feet
Basswood	8"	S22°E	12.63 feet
Steel Sign Post		Southeast	1.12 feet

Stock No. 26273

Sheet 7 of 7

11. North Sixteenth Corner to Sections 7 and 8, T35N, R15E.
 Corner position established at midpoint and on line between the East Quarter Corner and Northwest Section Corner to Section 7.

Corner References:

Reference Monument		East	25.00 feet
Tamarack	20"	N84°E	24.40 feet
Tamarack	18"	S83°E	36.16 feet
Steel Sign Post		NE of R.M.	1.73 feet
2" Iron Pipe		East	20.7 feet

SURVEYORS AFFIDAVIT

State of Wisconsin) SS
 County of Forest)

I, Milo E. Stefan, Registered Land Surveyor in the State of Wisconsin, hereby certify that I have surveyed and subdivided Section 7, township 35 north, range 15 east, Fourth Principal Meridian, State of Wisconsin.

The plat map and the notes herewith are a correct representation of the land surveyed and divided. I have surveyed and subdivided said section in accordance with the rules for the survey of the public lands and with the statutes of the State of Wisconsin.



Date of Survey: 1989

Milo E. Stefan
 Registered Land Surveyor, State of Wisconsin
 Certificate No. 1558

Plat ready for filing:

Dale B. Staeger
 District Ranger

