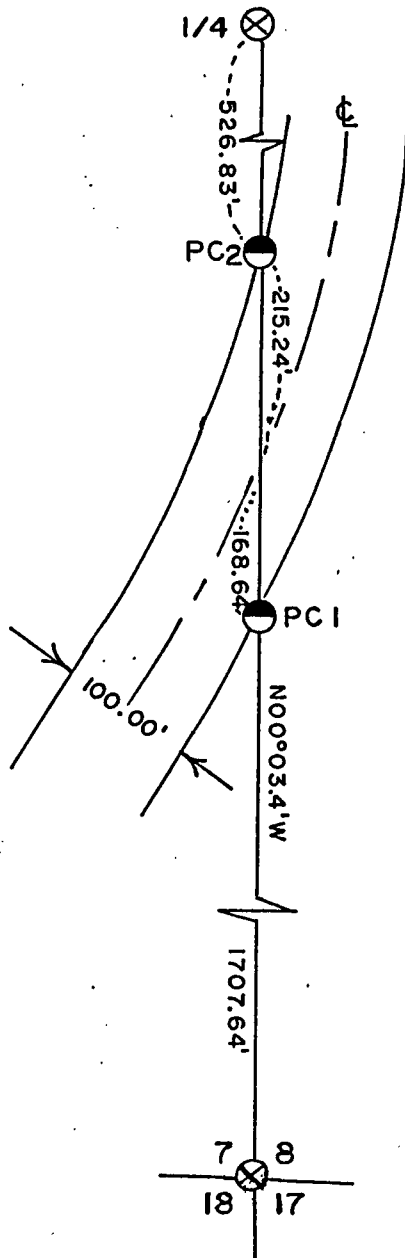


DETAIL

Railroad R-O-W SW 1/4 Section 8



Curve Data
 $\Delta = 44^{\circ}04'$
 $D = 2^{\circ}$
 $R = 2864.9'$

Stock No. 26273

Sheet 3 of 7

SURVEY NOTES

This survey was made by Milo E. Stefan, a private land surveyor (RLS #1558) under contract with the U. S. Department of Agriculture, Forest Service, for the purpose of restoring and establishing corners on the perimeter of Section 8, for establishing subdivisional corners within Section 8, and for locating and marking the boundaries of U. S. Government lands on and within Section 8, Township 35 North, Range 15 East, Fourth Principal Meridian, Forest County, Wisconsin.

The U. S. Government lands in this section were acquired from 1938 - 1947.

The original government subdivision survey of this township was made by James McBride in 1859.

The corner positions recovered, restored and established by this survey are marked by the monument described in the map legend. They are also placed within an accuracy of one part in 3000 or better.

The bearings between corner positions are true bearings as determined by a solar observation.

The field notes of the survey and a copy of the plat are on file in the Forest Supervisor's Office at Rhinelander, Wisconsin.

CORNERS RECOVERED AND RESTORED1. Section Corner to Sections 5, 6, 7 and 8, T35N, R15E.

Corner position found marked by a 1" x 24" iron pipe with two Forest Service reference monuments. A 2 1/2" x 36" aluminum monument replaced the iron pipe.

Corner References:

Forest Service Brass Cap in 6" x 60" Concrete Post	Southwest	38.00 feet
Forest Service Aluminum Monument in Mound of Stone	Southeast	49.90 feet
White Spruce 18"	N83°E	127.00 feet
SE Corner of Cabin Foundation	N55°W	119.50 feet
Steel Sign Post SE of SE Reference Mark		.77 feet

2. Section Corner to Sections 4, 5, 8, and 9, T35N, R15E.

Corner position found marked by a railroad spike as set by Tom Arnott. Used by John Fisher to subdivide Section 5 in 1982.

Corner References:

Reference Monument	South	33.00 feet
Sugar Maple 6"	N45°E	46.76 feet
Sugar Maple 7"	S37°E	50.60 feet
Red Pine 6"	N19°W	52.47 feet
Steel Sign Post	South of R.M.	1.00 feet

Stock No. 26273

Sheet 4 of 7

3. Section Corner to Sections 8, 9, 16 and 17, T35N, R15E.

Corner position found marked by an aluminum monument as set by Milo E. Stefan (RLS #1558). Corner restored from remains of original bearing trees.

Corner References:

Sugar Maple	14"	N20°E	13.17 feet
Hemlock	13"	S38°E	8.06 feet
Hemlock	16"	S46°W	52.96 feet
Sugar Maple	12"	N67°W	23.20 feet
Steel Sign Post		West	1.40 feet

4. Section Corner to Sections 7, 8, 17 and 18, T35N, R15E.

Corner position restored at intersection of roads east, west and south. Fence line northerly. Corner marked by a 3/4" x 24" iron rod.

Corner References:

Reference Monument		North	25.00 feet
Basswood	6"	S78°E	96.88 feet
White Birch	5"	S52°W	45.14 feet
Red Pine	14"	N69°W	138.94 feet
Red Pine	14"	N11°W	172.43 feet
Steel Sign Post		NW of R.M.	.65 feet

5. Quarter Corner to Sections 5 and 8, T35N, R15E.

Corner position found marked by a railroad spike as set by Tom Arnott. Used by John Fisher to subdivide Section 5 in 1982.

Corner References:

Reference Monument		N1°-40'W	40.00 feet
Cedar	6"	N17°E	45.61 feet
Cedar	5"	S2°W	45.20 feet
Cedar	5"	N34°W	47.81 feet
Steel Sign Post		N1°-40'W of R.M.	1.00 feet

6. Quarter Corner to Sections 8 and 9, T35N, R15E.

Corner position found marked by a 2" x 30" aluminum monument as set by Milo E. Stefan (RLS #1558). Certificate on file at the Forest County Courthouse #119861.

7. Quarter Corner to Sections 8 and 17, T35N, R15E.

Corner position restored from remains of the original bearing tree and mound of stone.

Corner References:

Sugar Maple	6"	N88°E	33.99 feet
Sugar Maple	11"	S4°E	75.04 feet
Sugar Maple	5"	S24°W	19.63 feet
Sugar Maple	7"	N74°W	34.09 feet
Steel Sign Post		Northeast	1.28 feet

8. Quarter Corner to Sections 7 and 8, T35N, R15E.

Corner position found marked by a 1 1/2" x 12" iron pipe 6" below road surface. Corner position marked by a 3/4" x 24" iron rod.

Corner References:

Reference Monument		East	25.00 feet
Cedar	8"	N31°E	47.70 feet
Red Maple	4"	S23°E	39.06 feet
Red Pine	12"	S61°W	65.83 feet
Tamarack	10"	N56°W	75.00 feet
Steel Sign Post		East	24.00 feet

Stock No. 26273

Sheet 5 of 7

9. North Sixteenth Corner to Sections 8 and 9, T35N, R15E.

Corner position found marked by a 2" x 60" aluminum monument as set by John Fisher and filed on the plat for the subdivision for Section 5.

Corner References:

Tamarack	6"	N45°E	18.55 feet
Black Spruce	6"	S76°W	16.96 feet
Yellow Birch	7"	S34°E	15.06 feet
Steel Sign Post		South	1.0 feet

10. West Sixteenth Corner to Section 5 and 8, T35N, R15E.

Corner position found witnessed by a monument south, 40.00 feet, and bearing trees. Railroad spike set by John Fisher in 1982 has been removed to replace a culvert in County Highway "H".

Corner References:

Reference Monument		South	40.00 feet
Elm (dead)	5"	N58°W	68.77 feet
Tamarack (cut off)	5"	S55°W	70.73 feet
Balsam Fir	5"	N52°W	74.45 feet
New BTs			
Tamarack	4"	S13°W	56.12 feet
Tamarack	6"	S69°W	129.60 feet
Steel Sign Post		South of R.M.	.70 feet

CORNERS ESTABLISHED1. Center Quarter Corner to Section 8, T35N, R15E.

Corner position established at the intersection of straight lines between opposing Quarter Corners on the exterior of Section 8.

Corner References:

Sugar Maple	3"	N32°E	19.95 feet
Sugar Maple	12"	S32°W	27.31 feet
Steel Sign Post		Northeast	.64 feet

2. North Sixteenth Corner to Sections 7 and 8, T35N, R15E.

Corner position established at midpoint and on line between the West Quarter Corner and the Northwest Section Corner to Section 8.

Corner References:

Reference Monument		East	25.00 feet
Tamarack	20"	N84°E	24.40 feet
Tamarack	18"	S83°E	36.16 feet
Steel Sign Post		NE of R.M.	1.73 feet
2" Iron Pipe		East	20.7 feet

3. South Sixteenth Corner to Sections 8 and 9, T35N, R15E.

Corner position established at midpoint and on line between the East Quarter Corner and Southeast Section Corner to Section 8.

Corner References:

Black Ash	3"	N88°E	10.73 feet
Black Ash	6"	S39°W	6.02 feet
Steel Sign Post		Northeast	1.28 feet

Stock No. 26273

Sheet 6 of 7

4. Northwest Sixteenth Corner to Section 8, T35N, R15E.

Corner position established at the intersection of the North and West Sixteenth lines to Section 8.

Corner References:

Cedar	11"	S12°W	13.35 feet
Cedar	12"	N74°W	23.83 feet
Steel Sign Post		Southeast	1.14 feet

5. Center North Sixteenth Corner to Section 8, T35N, R15E.

Corner position established at midpoint and on line between the Center Quarter and North Quarter Corners to Section 8.

Corner References:

Basswood	5"	S36°E	35.65 feet
Sugar Maple	6"	N9°E	63.14 feet
Steel Sign Post		Southeast	.92 feet

6. Center West Sixteenth Corner to Section 8, T35N, R15E.

Corner position established at midpoint and on line between the Center Quarter and West Quarter Corners to Section 8.

Corner References:

Black Cherry	8"	N68°W	96.82 feet
Balsam Fir	12"	N20°W	125.76 feet
Steel Sign Post		Northeast	.78 feet

7. Center South Sixteenth Corner to Section 8, T35N, R15E.

Corner position established at midpoint and on line between the Center Quarter and South Quarter Corners to Section 8. Corner falls in Rat River. Witness Corner set N00°43.1'E, 3.89 Feet.

Witness Corner References:

Cedar	8"	N61°W	6.44 feet
Yellow Birch	5"	N2°E	20.16 feet
Steel Sign Post		North	1.92 feet

8. Property Corner #1

Corner position established at the intersection of the section line with the south edge of a 100 foot railroad right-of-way.

Corner References:

Black Cherry	7"	S13°W	39.92 feet
Black Cherry	7"	N69°W	26.69 feet
Steel Sign Post		Southwest	1.36 feet

9. Property Corner #2

Corner position established at the intersection of the section line with the north edge of a 100 foot railroad right-of-way.

Corner References:

Cedar	8"	N8°E	63.54 feet
Red Pine	12"	N77°W	60.59 feet
Steel Sign Post		Southwest	1.03 feet



Stock No. 26273

SURVEYORS AFFIDAVIT

State of Wisconsin) SS
County of Forest)

I, Milo E. Stefan, Registered Land Surveyor in the State of Wisconsin, hereby certify that I have surveyed and subdivided Section 8, township 35 north, range 15 east, Fourth Principal Meridian, State of Wisconsin.

The plat map and the notes herewith are a correct representation of the land surveyed and divided. I have surveyed and subdivided said section in accordance with the rules for the survey of the public lands and with the statutes of the State of Wisconsin.



Milo E. Stefan
Registered Land Surveyor, State of Wisconsin
Certificate No. 1558

Plat ready for filing:

Dale B. Stacey
District Ranger

Date of Survey: 1989

