

PLAT OF SURVEY

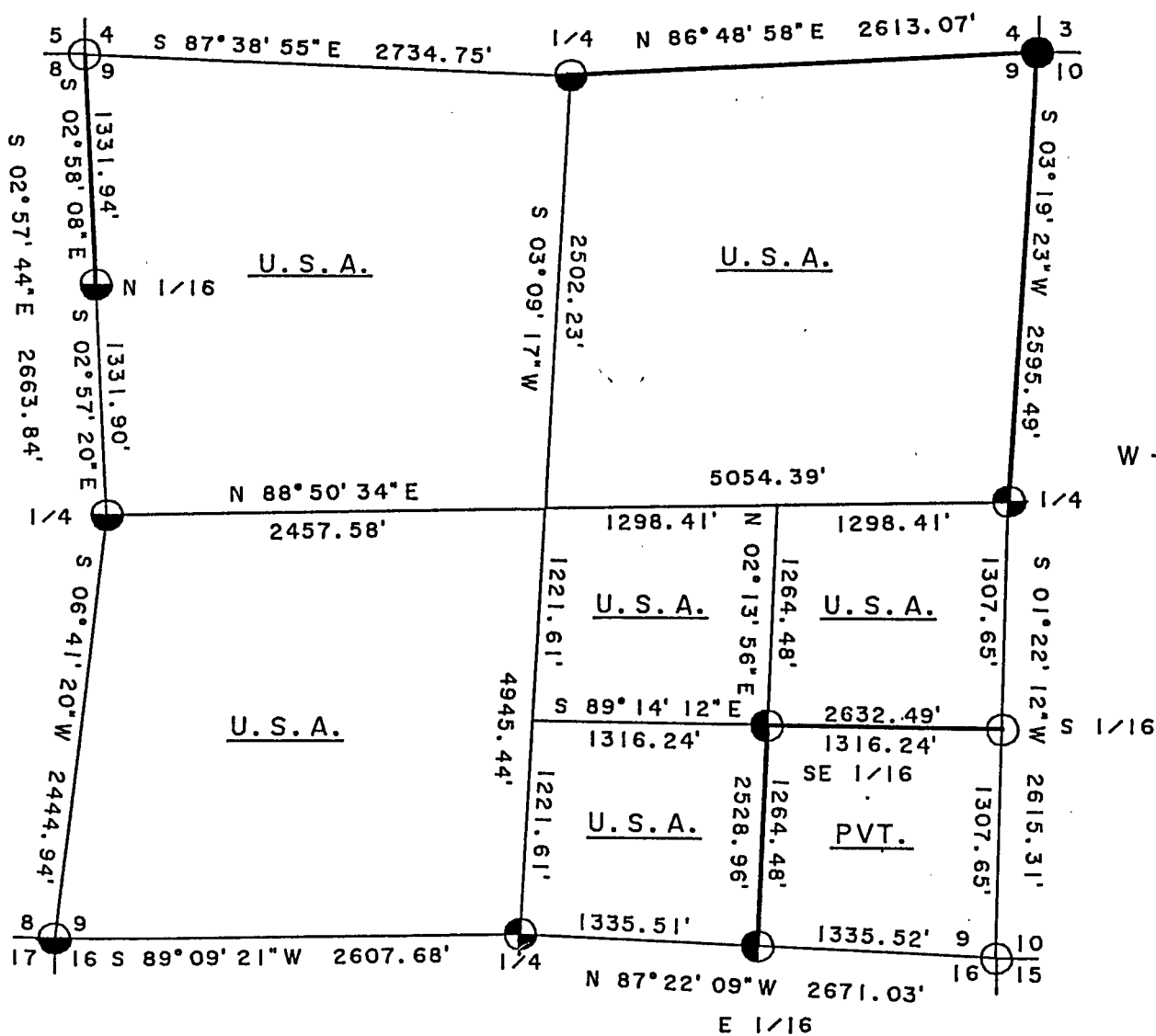
SHEET 1 OF 4

U. S. GOVERNMENT LANDS

Being all of Section 9 except the S.E. 1/4 of the S.E. 1/4;
Township 35 North, Range 15 East, Fourth Principal Meridian,

FOREST COUNTY, WISCONSIN.

SCALE IN FEET



LEGEND

- 2 1/2" x 36" ALUMINUM MONUMENT, SET THIS SURVEY.
- 1" x 36" ALUMINUM MONUMENT, SET THIS SURVEY.
- 2" ALUMINUM MONUMENT, FOUND IN PLACE.
- RAILROAD SPIKE, FOUND IN PLACE.
- 2" BRASS CAPPED MONUMENT, FOUND IN PLACE.
- MARKED BOUNDARY LINES OF U. S. GOVERNMENT LANDS.

Stock No. 26273

Sheet 2 of 4

SURVEY NOTES

This survey was made by the U.S. Department of Agriculture, Forest Service, for the purpose of restoring and establishing corners on the perimeter of Section 9 for establishing subdivisional corners within Section 9 and for locating and marking the boundaries of U.S. Government land on their perimeter and within Section 9, Township 35 North, Range 15 East, 4th Principal Meridian, Forest County, Wisconsin.

The U.S. Government lands in this section were acquired in 1935, 1947 and 1948.

The original government subdivision survey of this township was made in 1859. A resurvey was performed in 1904 by N. Smith.

The corner positions recovered, restored and established by this survey are marked by the monument described in the map legend.

The corner positions established were located to an accuracy of one part in 5000.

The bearings between corner positions are true bearings as determined by solar observations.

The field notes of this survey and a copy of this plat are on file in the Forest Supervisor's Office at Rhinelander, Wisconsin.

CORNERS RECOVERED OR RESTORED

1. Corner Common to Sections 4, 5, 8, and 9.
Corner recovered as set by Milo Stefan (R.L.S.), certificate on file in Forest County, document no. 138173.
2. Corner Common to Sections 3, 4, 9, and 10.
Corner recovered as set by Victor Headman (R.L.S.), certificate on file in Forest County.
3. Corner Common to Sections 9, 10, 15, and 16.
Corner recovered as set by Alan Harrison (R.L.S.), certificate on file in Forest County, document no. 131261.
4. Corner Common to Sections 8, 9, 16, and 17.
Corner recovered as set by Milo Stefan (R.L.S.), certificate on file in Forest County, document no. 131261.
5. Quarter Corner Common to Sections 4 and 9.
Corner recovered as set by John Fisher (R.L.S.),
Corner References:

Sugar	4"	S.24°E.	3.53 feet
Sugar	4"	S.81°E.	11.05 feet
Sugar	6"	N.45°E.	20.03 feet
Steel Sign Post		N.55°W.	0.65 feet

6. Quarter Corner Common to Sections 9 and 10.
Corner recovered marked by a 1" Re-Bar in post hole, believed to be a perpetuation of 1906 survey by N. Smith and accepted as such.
Corner References:

Basswood	10"	N.85°E.	18.09 feet
Power Pole	#35-15 9E20	N.85°W.	29.48 feet
Sugar	10"	N.04°W.	15.76 feet
Steel Sign Post		West	0.90 feet

Stock No. 26273

Sheet 3 of 4

7. Quarter Corner Common to Sections 9 and 16.

Corner position restored by double the distance and on line from the S.E. corner Section 9, thru the east 1/16 between Sections 9 and 16 as called for in a 1904 survey done by N. Smith.

Corner References:

Sugar	10"	N.30°E.	36.17 feet
Sugar	8"	N.72°E.	5.55 feet
Sugar	8"	N.83°W.	37.80 feet
Steel Sign Post		Southeast	1.05 feet

8. Quarter Corner Common to Sections 8 and 9.

Corner recovered as set by Milo Stefan (R.L.S.), certificate on file in Forest County, document no. 119861.

9. East One-Sixteenth Corner Common to Sections 9 and 16.

Corner position recovered as a post hole with bearing tree evidence as called for in a 1904 survey by N. Smith.

Corner References:

Black Cherry	12"	N.15°E.	21.53 feet
Sugar	8"	N.83°W.	24.15 feet
Steel Sign Post		North	0.74 feet

10. North One-Sixteenth Common to Sections 8 and 9.

Corner recovered as set by John Fisher (R.L.S.).

Corner References:

Tamarack	6"	N.45°E.	18.55 feet
Black Spruce	6"	S.76°W.	19.96 feet
Yellow Birch	7"	S.34°E.	15.06 feet
Steel Sign Post		South	1.00 feet

CORNERS ESTABLISHED1. South One-Sixteenth Common to Sections 9 and 10.

Corner established midpoint and on line between the southeast corner and the east quarter corner of Section 9.

Corner References:

Sugar	8"	N.62°E.	39.71 feet
Sugar	10"	S.61°E.	58.22 feet
Witness Corner	1"x 36"	N.88°W.	57.22 feet
Steel Sign Post		West	58.06 feet

2. Southeast One-Sixteenth Corner Section 9.

Corner position established at the intersection of the south and east one-sixteenth lines of Section 9.

Corner References:

Sugar	12"	S.63°W.	35.67 feet
Sugar	8"	N.64°W.	7.42 feet
Steel Sign Post		South	1.26 feet

Stock No. 26273

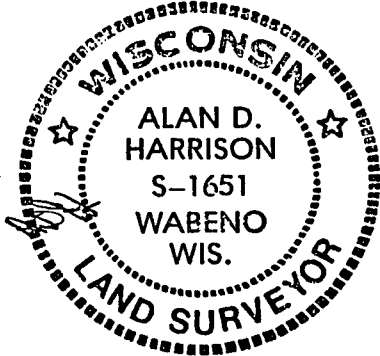
Sheet 4 of 4

SURVEYOR'S AFFIDAVIT

State of Wisconsin] SS
County of Forest]

I, Alan D. Harrison, Land Surveyor, U.S.D.A. Forest Service and a Registered Land Surveyor in the State of Wisconsin, do hereby certify that I have surveyed and subdivided Section 9, Township 35 North, Range 15 East, Fourth Principal Meridian, State of Wisconsin.

The plat map and the notes herewith are a correct representation of the land surveyed and divided. I have surveyed and subdivided said section in accordance with the rules for survey of the public lands and with the statutes of the State of Wisconsin.



Alan D. Harrison
LAND SURVEYOR, U.S.D.A. Forest Service
R.L.S. Number S-1651
State of Wisconsin

Plat Ready for Filing:

Sue Vap
District Ranger

Date of Survey: 1991

