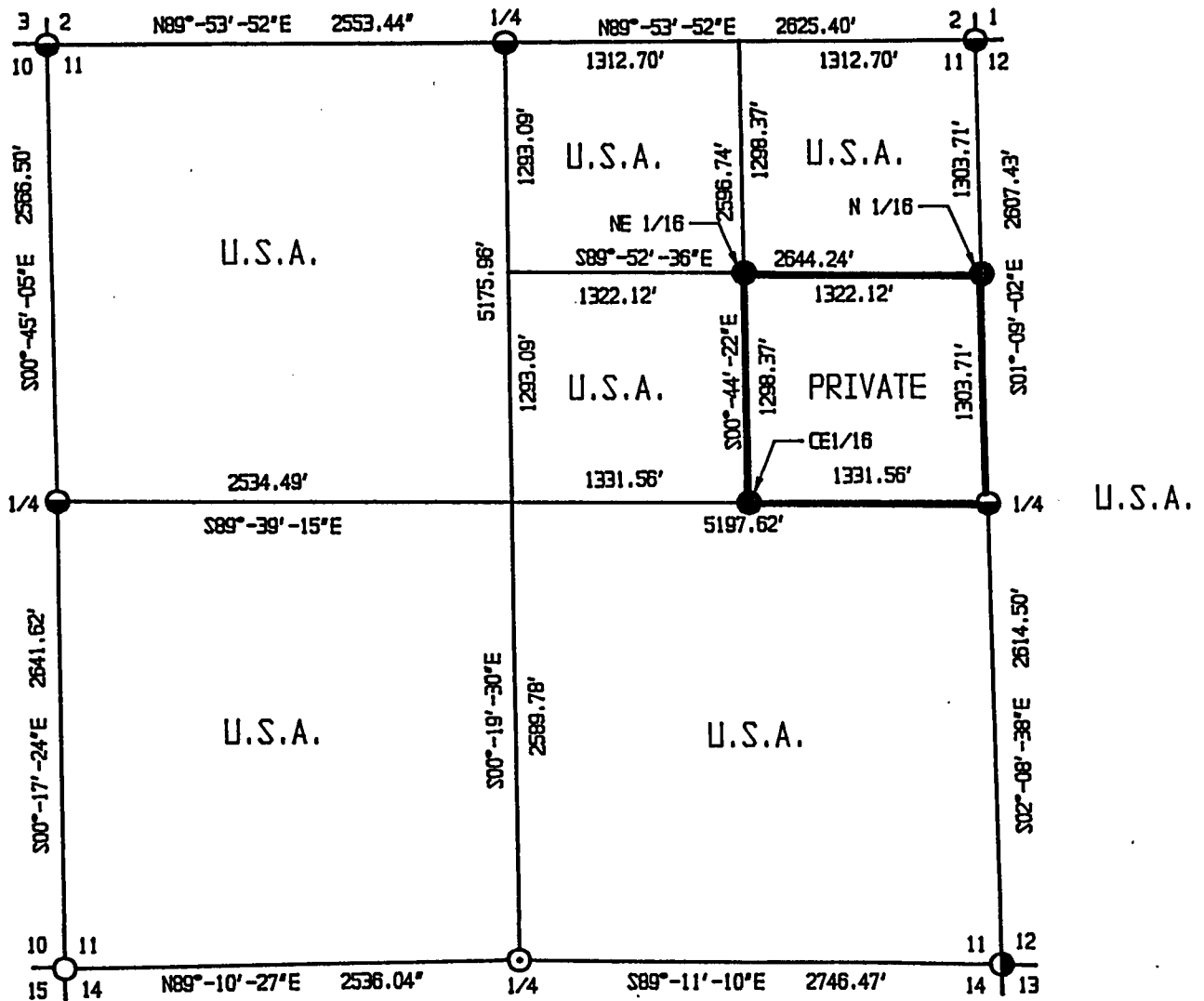
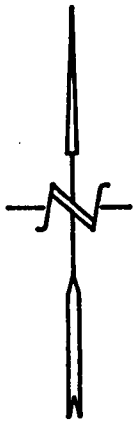
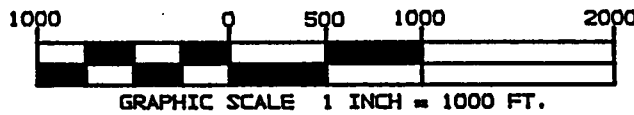


PLAT OF SURVEY

SHEET 1 OF 4

U.S. GOVERNMENT LAND
 BEING ALL OF SECTION 11
 EXCEPT THE SE1/4 OF NE1/4,
 TOWNSHIP 35 NORTH, RANGE 15 EAST
 FOURTH PRINCIPAL MERIDIAN

FOREST COUNTY, WISCONSIN



LEGEND

- ⊙ FOUND P.K. NAIL
- 1" X 36" ALUMINUM CAPPED MONUMENT - SET THIS SURVEY.
- FOUND RAILROAD SPIKE
- FOUND ALUMINUM CAPPED PIPE
- FOUND IRON ROD
- BOUNDARY LINE SET TO FOREST SERVICE STANDARDS.

SECTION 11, T35N-R15E
SURVEY NOTES

This survey was made by Coleman Engineering Company for the U.S. Department of Agriculture-Forest Service under Contract No. 53-56A6-4-00936, Order No. 43-56A6-5-0030 for the purpose of restoring and establishing corners on the perimeter of Section 11, for establishing subdivisional corners within Section 11, and for locating and marking the boundaries of U.S. Government lands along the perimeter and within Section 11, Township 35 North, Range 15 East, Fourth Principal Meridian, Forest County, State of Wisconsin.

The survey is based on U.S.D.A., U.S. Forest Service GPS survey control completed in 1994 and the resulting sectional subdivision therefrom.

The original township line survey was completed by Artemas Curtis in 1857. The township subdivision survey was completed by James McBride in 1859.

The corner positions recovered, restored and established by this survey are marked by the monument described in the map legend.

The corner positions established were located to a minimum accuracy of 1 part in 5000.

The field notes of this survey and a copy of this plat are on file in the Forest Supervisor's office in Rhinelander, Wisconsin.

Conversions between grid bearings and true bearings are performed by use of the following algebraic formula: true bearing - convergence angle = grid bearing. (close attention to the algebraic sign must be observed, ie: \pm of the convergence angle.)

Distances shown are Wisconsin north zone state plane grid distances. Conversion to surface distance is performed by the formula:

$$\left[\frac{\text{Grid Distance}}{\left(\text{Grid Scale Factor} \times \frac{20,906,000}{20,906,000 + \text{Mean Elev.}} \right)} \right] = \text{Surface Distance}$$

Wisconsin north zone coordinates were computed by USDA - U.S. Forest Service and are based on the 1983 North American Datum.

COORDINATE VALUES ON 1983 NAD

Corner Code	North Latitude	West Longitude	State Plane Coordinates		Convergence Angle	Scale Factor
			North	East		
NW	45°-32'-08.51"	88°-35'-33.01"	137761.016	2329170.823	01°-00'-55.18"	1.000005766
N 1/4	45°-32'-08.11"	88°-34'-57.14"	137765.572	2331724.256	01°-01'-21.05"	1.000005787
NE	45°-32'-07.69"	88°-34'-20.26"	137770.257	2334349.650	01°-01'-47.66"	1.000005809
NE 1/16	45°-31'-55.08"	88°-34'-38.79"	136469.654	2333053.709	01°-01'-34.290"	1.000006480
N 1/16	45°-31'-54.82"	88°-34'-20.22"	136466.805	2334375.827	01°-01'-47.680"	1.000006494
W 1/4	45°-31'-43.17"	88°-35'-33.17"	135194.733	2329204.476	01°-00'-55.06"	1.000007116
C-E 1/16	45°-31'-42.26"	88°-34'-38.88"	135171.393	2333070.464	01°-01'-34.22"	1.000007165
E/1/4	45°-31'-41.95"	88°-34'-20.19"	135163.354	2334402.004	01°-01'-47.7"	1.000007182
SW	45°-31'-17.10"	88°-35'-33.64"	132553.145	2329217.840	01°-00'-54.72"	1.000008522

Corner Code	North	West	State Plane Coordinates		Convergence	Scale Factor
	Latitude	Longitude	North	East	Angle	
S 1/4	45°-31'-17.01"	88°-34'-58.02"	132589.692	2331753.613	01°-01'-20.42"	1.000008526
SE	45°-31'-16.14"	88°-34'-19.47"	132550.681	2334499.804	01°-01'-48.23"	1.000008573

CORNERS RECOVERED OR RESTORED

1. Section corner common to Sections 2, 1, 11 and 12, T35N, R15E. Corner position monumented by Milo Stefan, RLS, in 1982 and recovered by Alan Harrison, RLS, 12/14/93. Certificate on file in Forest County - Document No. 151814.
2. Quarter corner common to Sections 11 and 2, T35N, R15E. Corner position monumented by Alan Harrison, RLS, 6/27/94. Certificate on file in Forest County - Document No. 151813.
3. East sixteenth corner common to Sections 11 and 2, T35N-R15E and Section 31, T37N-R16E. Corner recorded as monumented by John Garske, RLS, 1994.
4. Section corner common to Sections 2, 3, 10 and 11, T35N, R15E. Corner position monumented by Milo Stefan, RLS, in 1982. Certificate on file in Forest County, Document No. 129846.
5. Quarter corner common to Sections 10 and 11, T35N, R15E. Corner position monumented by Milo Stefan, RLS, in 1983. Recovered by Alan Harrison, RLS, on 12-16-93. Certificate on file in Forest County, Document No. 151815.
6. Quarter corner common to Sections 11 and 12, T35N-R15E. Corner position monumented by Alan Harrison, RLS, in 1984. Certificate on file in Forest County, Document No. 152891.
7. Section corner common to Sections 10, 11, 14 and 15, T35N, R15E. Corner position monumented by Jean Resvick, RLS, in 1970. Certificate on file in Forest County, Document No. 98041.
8. Quarter corner common to Sections 11 and 14, T35N, R15E. Corner position monumented by Alan Harrison, RLS, in 1987 and again in 1994. Certificate on file in Forest County, Document No. 152889.
9. Section corner common to Sections 11, 12, 13 and 14, T35N, R15E. Corner position monumented by Jean Resvick, RLS, in 1969. Recovered by Alan Harrison, RLS, in 1994. Certificate on file in Forest County, Document No. 152888.

CORNERS ESTABLISHED

1. Northeast sixteenth corner Section 11, T35N, R15E. Established corner position at the intersection of straight lines between opposing one-sixteenth corner positions on the perimeter of the NE quarter of Section 11.

Referenced as follows:

5" Basswood	8" Red Pine	SSP
N-81°E	S-11°E	NW
18.43'	22.53'	1.00'

2. North sixteenth corner common to Sections 11 and 12, T35N, R15E. Corner position established mid-point and on line between the Northeast corner and east one-quarter corner of Section 11.

Referenced as follows:

SSD	4" Sugar	4" Sugar
NE	East	S-34°W
0.98'	32.71'	29.55'

3. Center-East sixteenth corner Section 11, T35N, R15E. Corner position established at the mid-point and on line between the center of section and east one-quarter corner of Section 11.

Referenced as follows:

Sugar	SSP	Basswood
4"	SW	6"
S-51°W	1.01'	N-39°W
8.04'	-	17.17'

SURVEYOR'S AFFIDAVIT

State of Wisconsin)
) ss.
 County of Forest)

I, John R. Garske, Land Surveyor for Coleman Engineering Company and a registered surveyor in the State of Wisconsin, hereby certify that this survey of Section 11, Township 35 North, Range 15 East, Fourth Principal Meridian, State of Wisconsin, was performed under my direct responsible supervision.

The plat map and the notes herewith are a correct representation of the land surveyed and divided. I have surveyed and subdivided said section in accordance with the rules for survey of the public lands and with the statutes of the State of Wisconsin.



John R. Garske
 John R. Garske
 Coleman Engineering Company
 R.L.S., State of Wisconsin
 License No. S-1685

Plat ready for filing:

Harry A. Haska
 District Ranger

