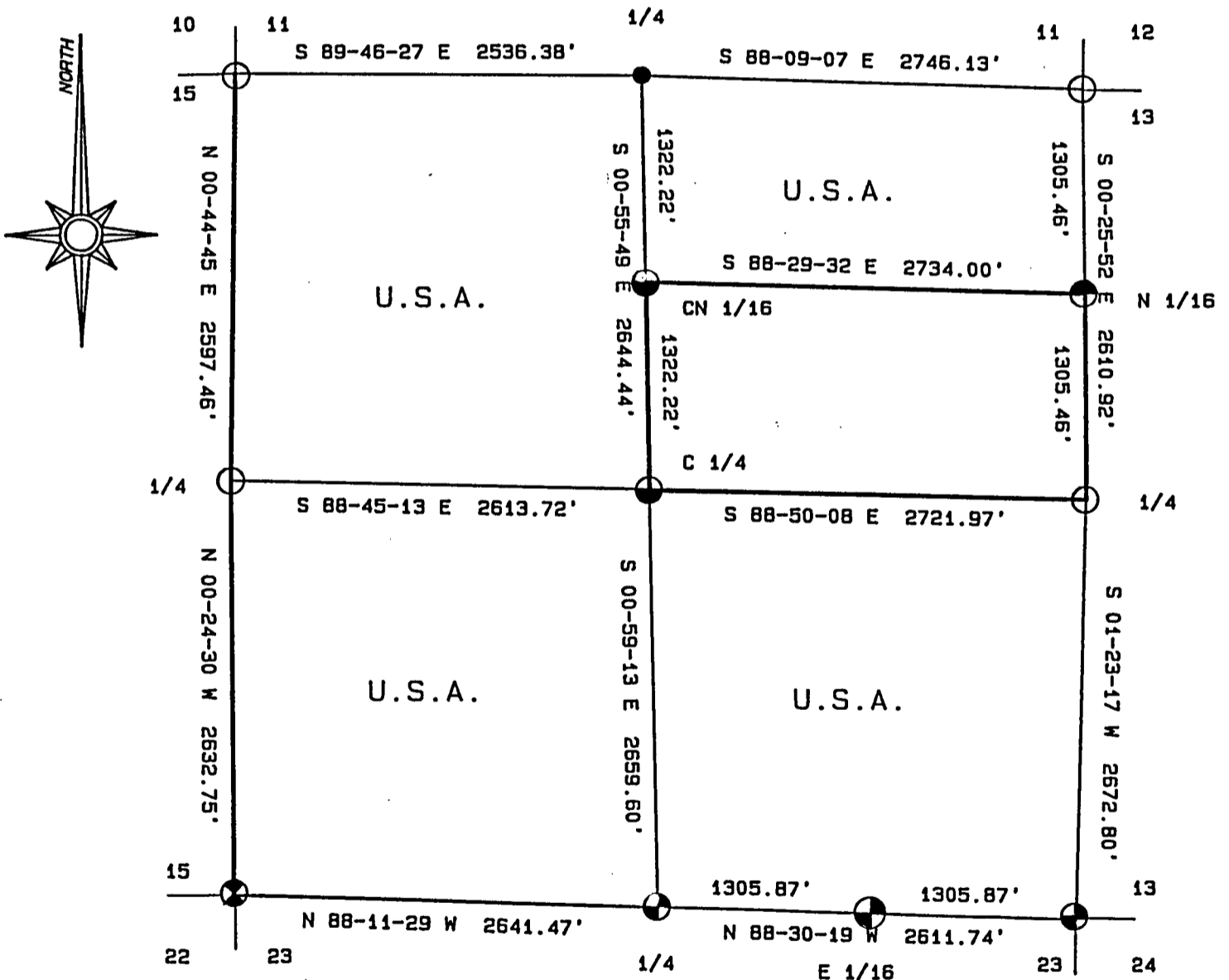
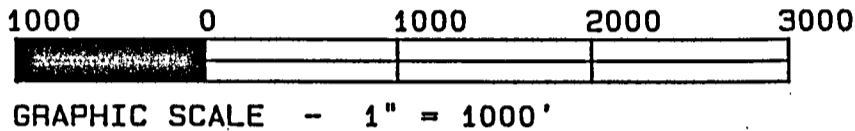


Stock No. 26273

PLAT OF SURVEY U.S. GOVERNMENT LANDS

BEING THE N 1/2, N.E. 1/4; S.E. 1/4; S.W. 1/4; and N.W. 1/4;
SECTION 14; TOWNSHIP 35 NORTH; RANGE 15 EAST; FOURTH PRINCIPAL MERIDIAN;
FOREST COUNTY; WISCONSIN



LEGEND.

- BRASS CAPPED MONUMENT, FOUND IN PLACE.
- ⊗ B.L.M. ALUMINUM MONUMENT, FOUND IN PLACE.
- ⊕ 2 1/2" X 36" ALUMINUM MONUMENT, SET THIS SURVEY.
- ⊙ 1 1/2" X 36" ALUMINUM MONUMENT, SET THIS SURVEY.
- ⊖ 1 1/2" X 60" ALUMINUM MONUMENT, SET THIS SURVEY.
- R.R. SPIKE IN ROAD SURFACE, SET THIS SURVEY.
- MARKED BOUNDARY LINE OF U.S. GOVERNMENT LANDS.

Stock No. 26273

Sheet 2 of 4

SURVEY NOTES

This survey was made by the U. S. Department of Agriculture, Forest Service, for the purpose of restoring and establishing corners on the perimeter of Section 14, for establishing subdivisional corners within Section 14, and for locating and marking the boundaries of U. S. Government land on their perimeter and within Section 14, Township 35 North, Range 15 East, Fourth Principal Meridian, Forest County, Wisconsin.

The U. S. Government lands in this section were acquired in 1935, 1936, and 1947.

The original Government subdivision survey of this township was made in 1859.

In 1904, N. Smith surveyed the north line of Section 14.

In 1908, J. Melendy subdivided Section 14 and made references for corners recovered or established.

The corner positions recovered, restored, and established by this survey are marked by the monument described in the map legend.

The corner positions established were located to an accuracy of one part in 3000.

The bearings between corner positions are true bearings as determined by solar observations.

The field notes of this survey and a copy of this plat are on file in the Forest Supervisor's Office at Rhinelander, Wisconsin.

CORNERS RECOVERED AND RESTORED

- Section Corner to Sections 10-11-14-15, T.35N., R.15E.
Corner position recovered by pulling distances from the corner references as set by J. Resvick. Certificate on file.
Corner References:

| | | | |
|------------------|-----|---------|------------|
| Red Pine | 12" | N.19°E. | 84.77 feet |
| White Spruce | 10" | S.23°E. | 36.52 feet |
| White Spruce | 8" | N.33°W. | 56.01 feet |
| Reference Mark 1 | | S.14°E. | 33.00 feet |
| Reference Mark 2 | | N.2°E. | 40.00 feet |

- Section Corner to Sections 11-12-13-14, T.35N., R.15E.
Corner position recovered by pulling distances from the corner references to the corner buried in the road. Certificate on file.
Corner References:

| | | | |
|------------------|-----|---------|------------|
| Reference Mark 1 | | North | 50.00 feet |
| Reference Mark 2 | | South | 50.00 feet |
| Yellow Birch | 7" | S.38°W. | 77.36 feet |
| Basswood | 11" | N.35°W. | 83.12 feet |

Stock No. 26273

Sheet 3 of 4

3. Section Corner to Sections 13-14-23-24, T.35N., R.15E.

Corner position found marked by a 2" iron pipe in a mound of stone and J. Melendy's references.

Corner References:

| | | | |
|--------------------------------------------|----|-----------|------------|
| Sugar | 6" | N.82°E. | 36.40 feet |
| Red Maple | 7" | S.48°E. | 11.25 feet |
| Chiseled "X" on Rock (3' x 4' x 12") | | S.76°W. | 25.13 feet |
| Sugar | | N.14°W. | 20.23 feet |
| Steel Sign Post | | Southwest | 1.30 feet |

4. Section Corner to Sections 14-15-22-23, T.35N., R.15E.

Corner position found marked by a BLM monument with a 2" iron pipe next to monument.

Corner References:

| | | | |
|-----------------|-----|---------|------------|
| Sugar | 8" | N.85°E. | 35.30 feet |
| Sugar | 11" | S.44°E. | 37.90 feet |
| Yellow Birch | 4" | S.15°W. | 24.42 feet |
| Sugar | 6" | N.37°W. | 36.78 feet |
| Steel Sign Post | | North | 1.20 feet |

5. Quarter Corner to Sections 11-14, T.35N., R.15E.

Corner position restored by retracement of J. Melendy's survey from the C₁ through the CN 1/16 of Section 14.

Corner References:

| | | | |
|-----------------|-----|---------|------------|
| Jack Pine | 8" | N.34°E. | 73.81 feet |
| Sugar | 6" | S.32°E. | 70.30 feet |
| Jack Pine | 12" | N.27°W. | 56.75 feet |
| Steel Sign Post | | North | 24.05 feet |

6. Quarter Corner to Sections 13-14, T.35N., R.15E.

Corner position found as monumented by Alan Harrison in 1985. Certificate on file.

7. Quarter Corner to Sections 14-23, T.35N., R.15E.

Corner position restored by retracement of J. Melendy's survey from the SE corner of Section 14 through the East 1/16 on the south line of Section 14. Corner marked by an "X" on a rock, 2' x 4'.

Corner References:

| | | | |
|-------------------------------|-----|---------|------------|
| Aspen | 10" | N.32°E. | 24.40 feet |
| Sugar | 5" | S.69°W. | 65.74 feet |
| Sugar | 5" | N.69°W. | 62.47 feet |
| Witness Corner (2½" x 36") | | East | 5.60 feet |
| Steel Sign Post | | East | 4.75 feet |

8. Quarter Corner to Sections 14-15, T.35N., R.15E.

Corner position found as monumented by Alan Harrison in 1985. Certificate on file.

Stock No. 26273

9. Center Quarter Corner of Section 14, T.35N., R.15E.

Corner position found marked by a 1 1/2" iron pipe with a small pile of stones around pipe. Pipe is believed to be a perpetuation of a 1908 survey done by J. Melendy.

Corner References:

| | | | | |
|-----------------|----|-----------|-------|------|
| Red Pine | 6" | N.25°E. | 24.26 | feet |
| Black Cherry | 5" | S.09°E. | 33.07 | feet |
| Steel Sign Post | | Southwest | 0.62 | feet |

10. North Sixteenth between Sections 13-14, T.35N., R.15E.

Corner position found marked by a 1 1/2" iron pipe with an old squared 4" x 4" wood post next to pipe.

Corner References:

| | | | | |
|-----------------|----|-----------|-------|------|
| White Pine | 8" | S.02°W. | 54.92 | feet |
| Sugar | 8" | S.77°W. | 43.25 | feet |
| Steel Sign Post | | Northeast | 1.11 | feet |

11. Center North Sixteenth of Section 14, T.35N., R.15E.

Corner position found marked by an "X" chiseled on east edge of a stone with a 1 1/2" iron pipe next to rock. Chiseled "X" was placed as the result of a 1908 survey as done by J. Melendy.

Corner References:

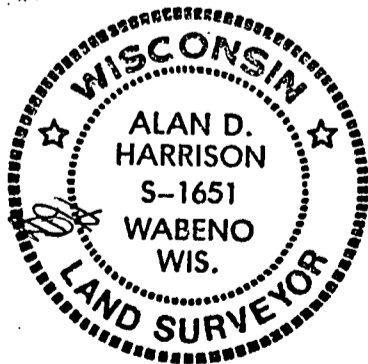
| | | | | |
|-----------------|----|-----------|-------|------|
| Basswood | 7" | N.62°E. | 28.38 | feet |
| Sugar | 5" | N.65°W. | 26.45 | feet |
| Steel Sign Post | | Northwest | 1.31 | feet |

SURVEYOR'S AFFIDAVIT

State of Wisconsin }
County of Forest } SS

I, Alan D. Harrison, Land Surveyor, USDA, Forest Service, and a registered surveyor in the State of Wisconsin, hereby certify that I have surveyed and subdivided Section 14, Township 35 North, Range 15 East, Fourth Principal Meridian, State of Wisconsin.

The plat map and the notes herewith are a correct representation of the land surveyed and divided. I have surveyed and subdivided said section in accordance with the rules for survey of the public lands and with the statutes of the State of Wisconsin.



Alan D. Harrison
Land Surveyor, USDA, Forest Service
R.L.S., State of Wisconsin
Certificate S-1651

Plat ready for filing:

Dale S. Steege
District Ranger

Date of Survey: 1987

