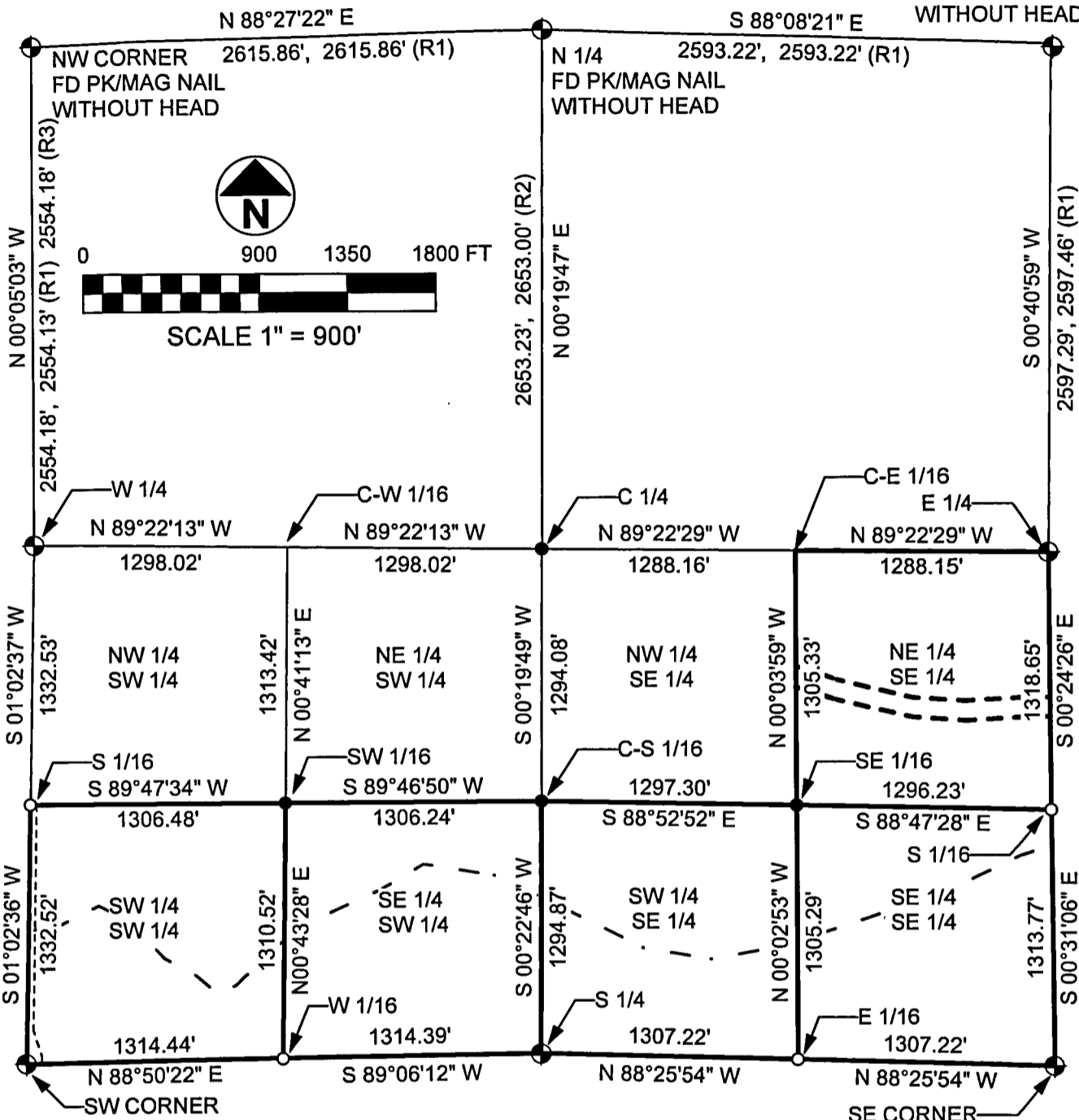


9-4-12

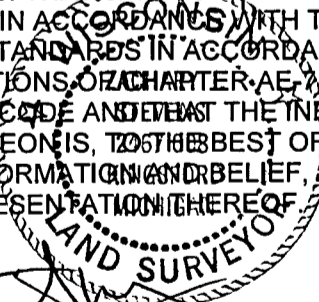
# PLAT OF SURVEY

THE S 1/2 OF THE S 1/2 & THE NE 1/4 OF THE SE 1/4,  
SECTION 15, T35N, R15E,  
TOWN OF BLACKWELL, FOREST COUNTY, WISCONSIN

NE CORNER  
FD PK/MAG NAIL  
WITHOUT HEAD



I HEREBY CERTIFY ON BEHALF OF MOUNTAIN ENGINEERING, INC. THAT SAID SURVEY AND THE ABOVE MAP WERE MADE IN ACCORDANCE WITH THE ACCEPTABLE PROFESSIONAL STANDARDS IN ACCORDANCE WITH APPLICABLE SECTIONS OF CHAPTER AE, OF WISCONSIN ADMINISTRATION CODE AND THAT THE INFORMATION CONTAINED THEREON IS, TO THE BEST OF MY KNOWLEDGE, INFORMATION AND BELIEF, A TRUE AND ACCURATE REPRESENTATION THEREOF.



Zachary J. Stevens  
ZACHARY J. STEVENS, RLS 2467-008

**LEGEND:**

- ⊕ GOVERNMENT CORNER
- SET 1" PIPE WITH SURVEY CAP
- FOUND CORNER AS NOTED
- (T) = TOTAL DISTANCE
- FD = FOUND
- IP = IRON PIPE
- (R1) = RECORD, USFS PLAT OF SURVEY
- (R2) = RECORD, 2005 TREML S-2197 SURVEY
- (R3) = RECORD, 2002 TREML S-2197 SURVEY

**MOUNTAIN ENGINEERING, INC.  
AND SURVEYING**

N2960 North US Hwy. 2  
Iron Mountain, Michigan 49801  
Phone 906-779-5762 Fax 906-779-5789  
Email mtnengineering@chartermi.net

**PREPARED FOR:**

FOREST COUNTY POTAWATOMI  
PO BOX 340  
CRANDON, WI 54520

DATE:  
AUGUST 30, 2012

BEARING BASIS:  
GPS GRID AZIMUTH

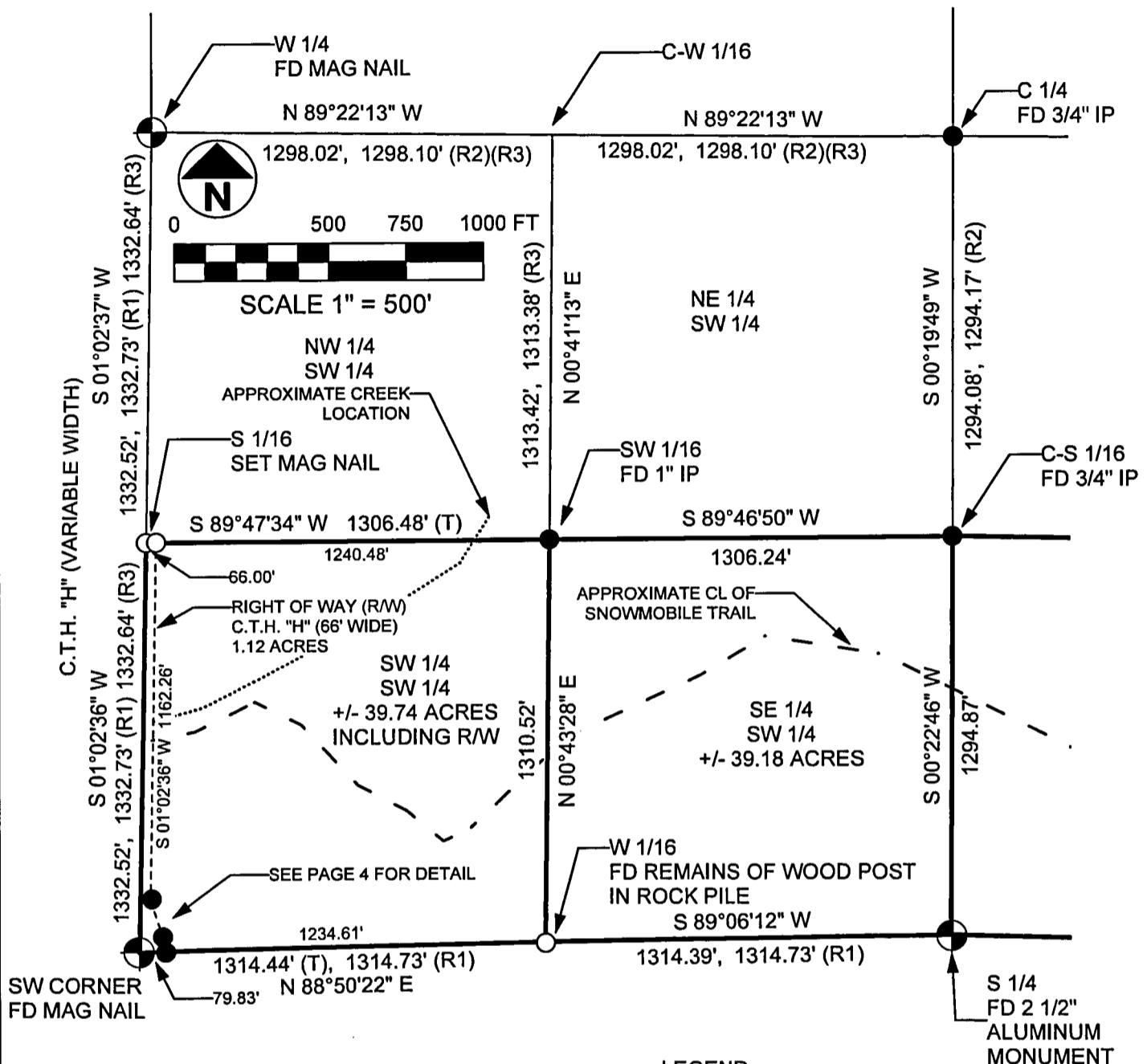
JOB NAME:  
FCP SECTION 15-35-15

PAGE 1 OF 4

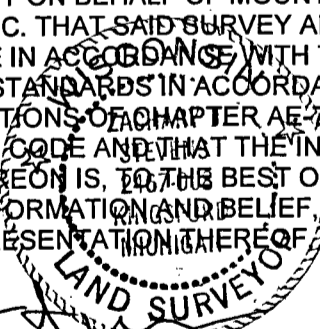
THE OWNER AGREES TO INDEMNIFY AND HOLD MOUNTAIN ENGINEERING, INC. HARMLESS FROM ANY DAMAGE, LIABILITY OR COST, INCLUDING ATTORNEY'S FEES AND COST OF DEFENSE ARISING FROM ANY CHANGES OR ALTERATIONS MADE BY ANYONE OTHER THAN MOUNTAIN ENGINEERING, INC., OR FROM ANY REUSE OF THE DRAWINGS AND DATA WITHOUT THE PRIOR WRITTEN CONSENT OF MOUNTAIN ENGINEERING, INC.

# PLAT OF SURVEY

THE S 1/2 OF THE S 1/2 & THE NE 1/4 OF THE SE 1/4,  
SECTION 15, T35N, R15E,  
TOWN OF BLACKWELL, FOREST COUNTY, WISCONSIN



I HEREBY CERTIFY ON BEHALF OF MOUNTAIN ENGINEERING, INC. THAT SAID SURVEY AND THE ABOVE MAP WERE MADE IN ACCORDANCE WITH THE ACCEPTABLE PROFESSIONAL STANDARDS IN ACCORDANCE WITH APPLICABLE SECTIONS OF CHAPTER AE-7 OF WISCONSIN ADMINISTRATION CODE AND THAT THE INFORMATION CONTAINED THEREON IS, TO THE BEST OF MY KNOWLEDGE, INFORMATION AND BELIEF, A TRUE AND ACCURATE REPRESENTATION THEREOF.



ZACHARY J. STEVENS, RLS 2467-008

- LEGEND:**
- ⊕ GOVERNMENT CORNER
  - SET 1" PIPE WITH SURVEY CAP
  - FOUND CORNER AS NOTED
  - (T) = TOTAL DISTANCE
  - FD = FOUND
  - IP = IRON PIPE
  - (R1) = RECORD, USFS PLAT OF SURVEY
  - (R2) = RECORD, 2005 TREML S-2197 SURVEY
  - (R3) = RECORD, 2002 TREML S-2197 SURVEY

**MOUNTAIN ENGINEERING, INC. AND SURVEYING**  
 N2960 North US Hwy. 2  
 Iron Mountain, Michigan 49801  
 Phone 906-779-5762 Fax 906-779-5789  
 Email mtnengineering@chartermi.net

PREPARED FOR:  
 FOREST COUNTY POTAWATOMI  
 PO BOX 340  
 CRANDON, WI 54520

DATE: AUGUST 30, 2012	BEARING BASIS: GPS GRID AZIMUTH	JOB NAME: FCP SECTION 15-35-15	PAGE 2 OF 4
--------------------------	------------------------------------	-----------------------------------	-------------

THE OWNER AGREES TO INDEMNIFY AND HOLD MOUNTAIN ENGINEERING, INC. HARMLESS FROM ANY DAMAGE, LIABILITY OR COST, INCLUDING ATTORNEY'S FEES AND COST OF DEFENSE ARISING FROM ANY CHANGES OR ALTERATIONS MADE BY ANYONE OTHER THAN MOUNTAIN ENGINEERING, INC., OR FROM ANY REUSE OF THE DRAWINGS AND DATA WITHOUT THE PRIOR WRITTEN CONSENT OF MOUNTAIN ENGINEERING, INC.

# PLAT OF SURVEY

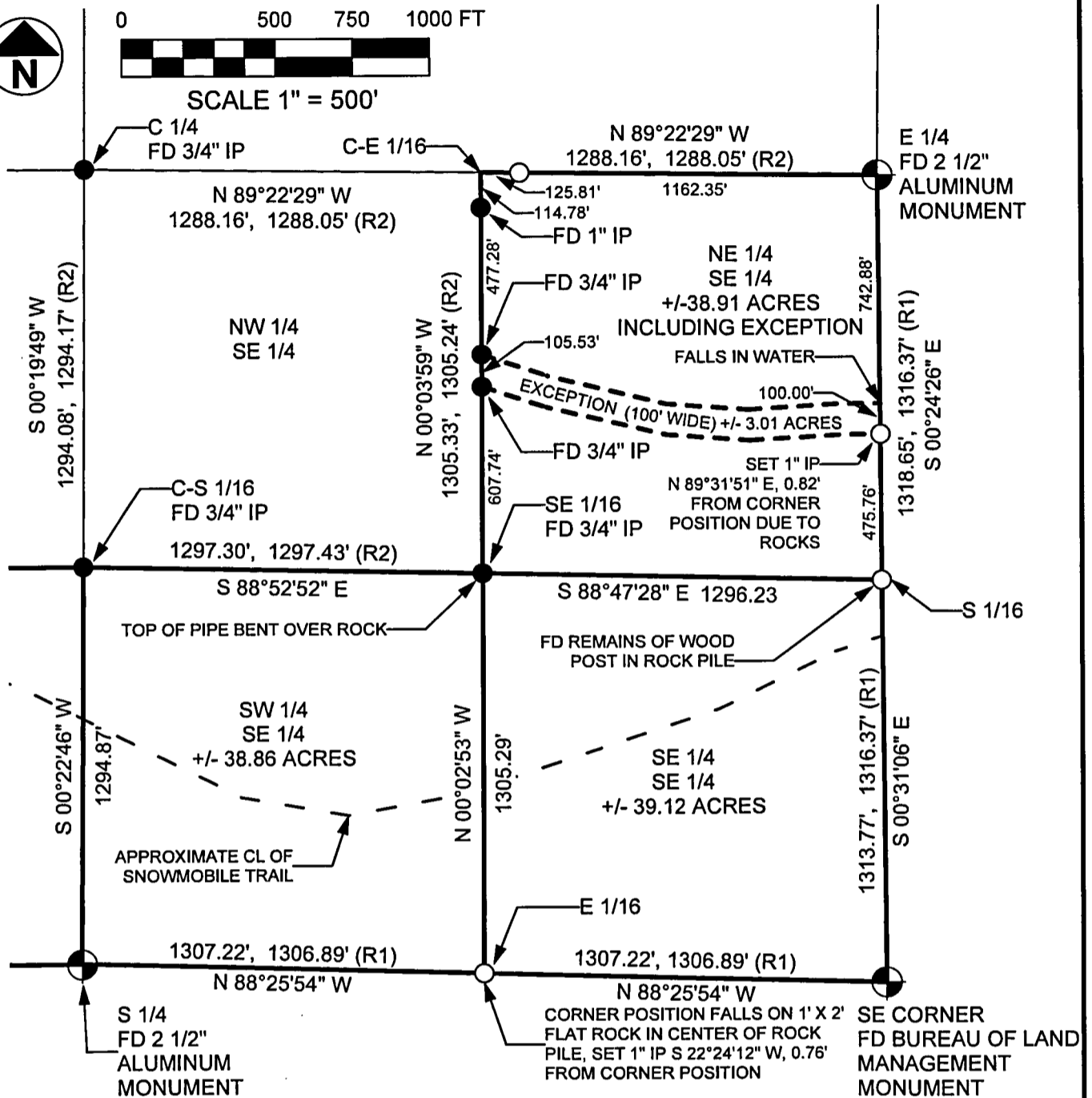
THE S 1/2 OF THE S 1/2 & THE NE 1/4 OF THE SE 1/4,  
SECTION 15, T35N, R15E,  
TOWN OF BLACKWELL, FOREST COUNTY, WISCONSIN



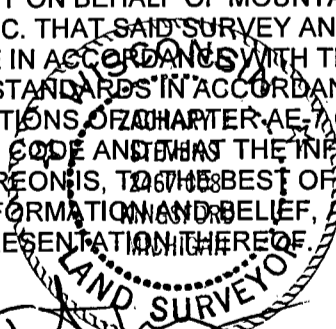
0 500 750 1000 FT



SCALE 1" = 500'



I HEREBY CERTIFY ON BEHALF OF MOUNTAIN ENGINEERING, INC. THAT SAID SURVEY AND THE ABOVE MAP WERE MADE IN ACCORDANCE WITH THE ACCEPTABLE PROFESSIONAL STANDARDS IN ACCORDANCE WITH APPLICABLE SECTIONS OF CHAPTER AE, 7 OF WISCONSIN ADMINISTRATION CODE AND THAT THE INFORMATION CONTAINED THEREON IS, TO THE BEST OF MY KNOWLEDGE, INFORMATION AND BELIEF, A TRUE AND ACCURATE REPRESENTATION THEREOF.



ZACHARY J. STEVENS, RLS 2467-008

**LEGEND:**

- ⊕ GOVERNMENT CORNER
- SET 1" PIPE WITH SURVEY CAP
- FOUND CORNER AS NOTED
- (T) = TOTAL DISTANCE
- FD = FOUND
- IP = IRON PIPE
- (R1) = RECORD, USFS PLAT OF SURVEY
- (R2) = RECORD, 2005 TREML S-2197 SURVEY
- (R3) = RECORD, 2002 TREML S-2197 SURVEY

**MOUNTAIN ENGINEERING, INC. AND SURVEYING**

N2960 North US Hwy. 2  
Iron Mountain, Michigan 49801  
Phone 906-779-5762 Fax 906-779-5789  
Email mtnengineering@chartermi.net

**PREPARED FOR:**

FOREST COUNTY POTAWATOMI  
PO BOX 340  
CRANDON, WI 54520

DATE:

AUGUST 30, 2012

BEARING BASIS:

GPS GRID AZIMUTH

JOB NAME:

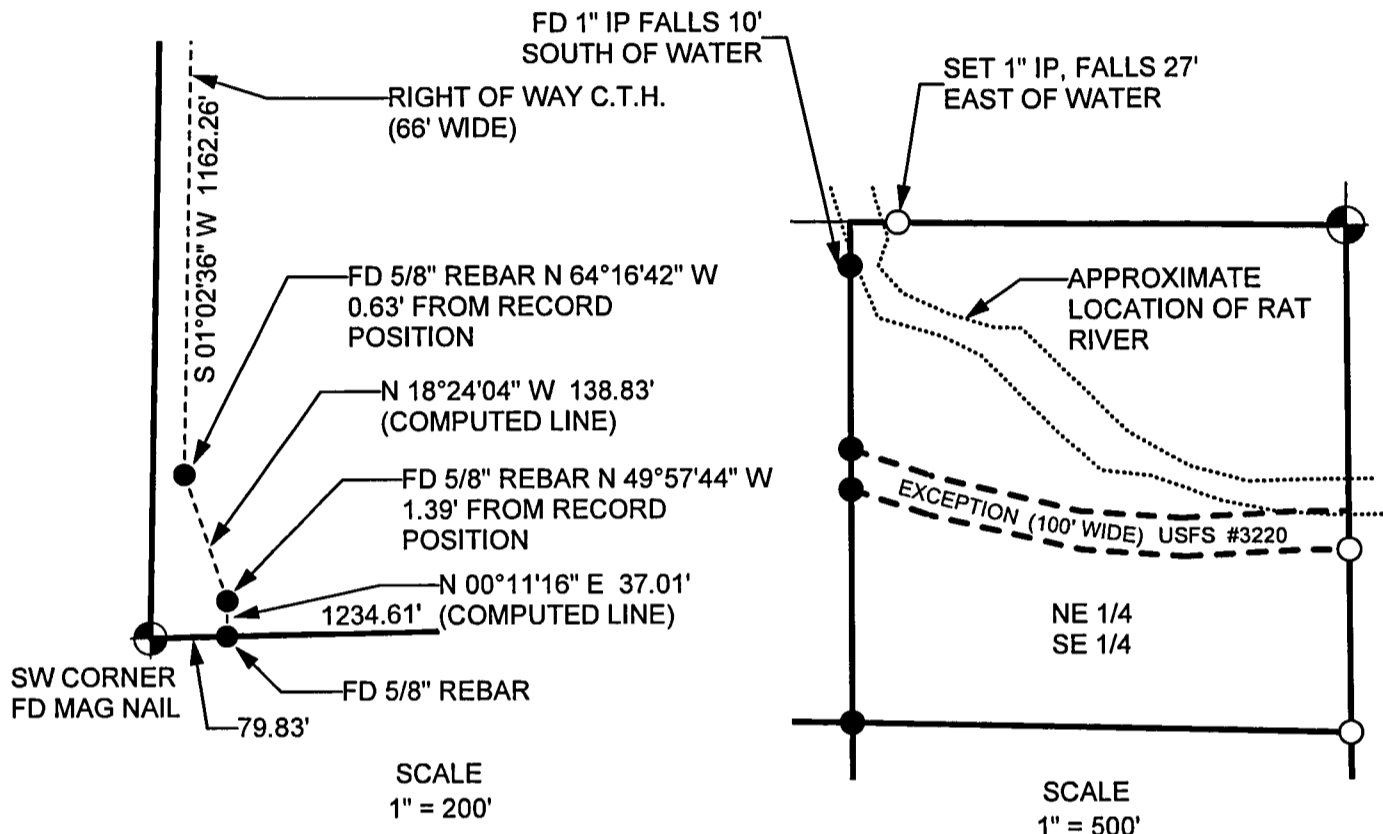
FCP SECTION 15-35-15

PAGE 3 OF 4

THE OWNER AGREES TO INDEMNIFY AND HOLD MOUNTAIN ENGINEERING, INC. HARMLESS FROM ANY DAMAGE, LIABILITY OR COST, INCLUDING ATTORNEY'S FEES AND COST OF DEFENSE ARISING FROM ANY CHANGES OR ALTERATIONS MADE BY ANYONE OTHER THAN MOUNTAIN ENGINEERING, INC., OR FROM ANY REUSE OF THE DRAWINGS AND DATA WITHOUT THE PRIOR WRITTEN CONSENT OF MOUNTAIN ENGINEERING, INC.

# PLAT OF SURVEY

THE S 1/2 OF THE S 1/2 & THE NE 1/4 OF THE SE 1/4,  
SECTION 15, T35N, R15E,  
TOWN OF BLACKWELL, FOREST COUNTY, WISCONSIN



RECORD RIGHT OF WAY FOR C.T.H. "H" DETERMINED FROM AYRES PLANS DATED 04-23-3003, PROJECT #9334-02-00

EXCEPTION RECORDED IN LIBER 77 PAGE 201

PARCEL SUBJECT TO ANY PUBLIC OR PRIVATE RIGHTS IN ANY PORTIONS OF THE SUBJECT PREMISES LYING WITHIN THE LIMITS OF COUNTY HIGHWAY "H" FOREST ABSTRACT COMPANY TITLE COMMITMENT NUMBER F-11962, DATED AUGUST 21, 2012.

I HEREBY CERTIFY ON BEHALF OF MOUNTAIN ENGINEERING, INC. THAT SAID SURVEY AND THE ABOVE MAP WERE MADE IN ACCORDANCE WITH THE ACCEPTABLE PROFESSIONAL STANDARDS IN ACCORDANCE WITH APPLICABLE SECTIONS OF CHAPTER AET OF WISCONSIN ADMINISTRATION CODE AND THAT THE INFORMATION CONTAINED THEREON IS, TO THE BEST OF MY KNOWLEDGE, INFORMATION AND BELIEF, A TRUE AND ACCURATE REPRESENTATION THEREOF.

**LEGEND:**

- ⊕ GOVERNMENT CORNER
- SET 1" PIPE WITH SURVEY CAP
- FOUND CORNER AS NOTED
- (T) = TOTAL DISTANCE
- FD = FOUND
- IP = IRON PIPE
- (R1) = RECORD, USFS PLAT OF SURVEY
- (R2) = RECORD, 2005 TREML S-2197 SURVEY
- (R3) = RECORD, 2002 TREML S-2197 SURVEY

*Zachary J. Stevens*  
ZACHARY J. STEVENS, RLS 2467-008

**MOUNTAIN ENGINEERING, INC. AND SURVEYING**

N2960 North US Hwy. 2  
Iron Mountain, Michigan 49801  
Phone 906-779-5762 Fax 906-779-5789  
Email mtnengineering@chartermi.net

**PREPARED FOR:**

FOREST COUNTY POTAWATOMI  
PO BOX 340  
CRANDON, WI 54520

DATE:  
AUGUST 30, 2012

BEARING BASIS:  
GPS GRID AZIMUTH

JOB NAME:  
FCP SECTION 15-35-15

PAGE 4 OF 4

THE OWNER AGREES TO INDEMNIFY AND HOLD MOUNTAIN ENGINEERING, INC. HARMLESS FROM ANY DAMAGE, LIABILITY OR COST, INCLUDING ATTORNEY'S FEES AND COST OF DEFENSE ARISING FROM ANY CHANGES OR ALTERATIONS MADE BY ANYONE OTHER THAN MOUNTAIN ENGINEERING, INC., OR FROM ANY REUSE OF THE DRAWINGS AND DATA WITHOUT THE PRIOR WRITTEN CONSENT OF MOUNTAIN ENGINEERING, INC.