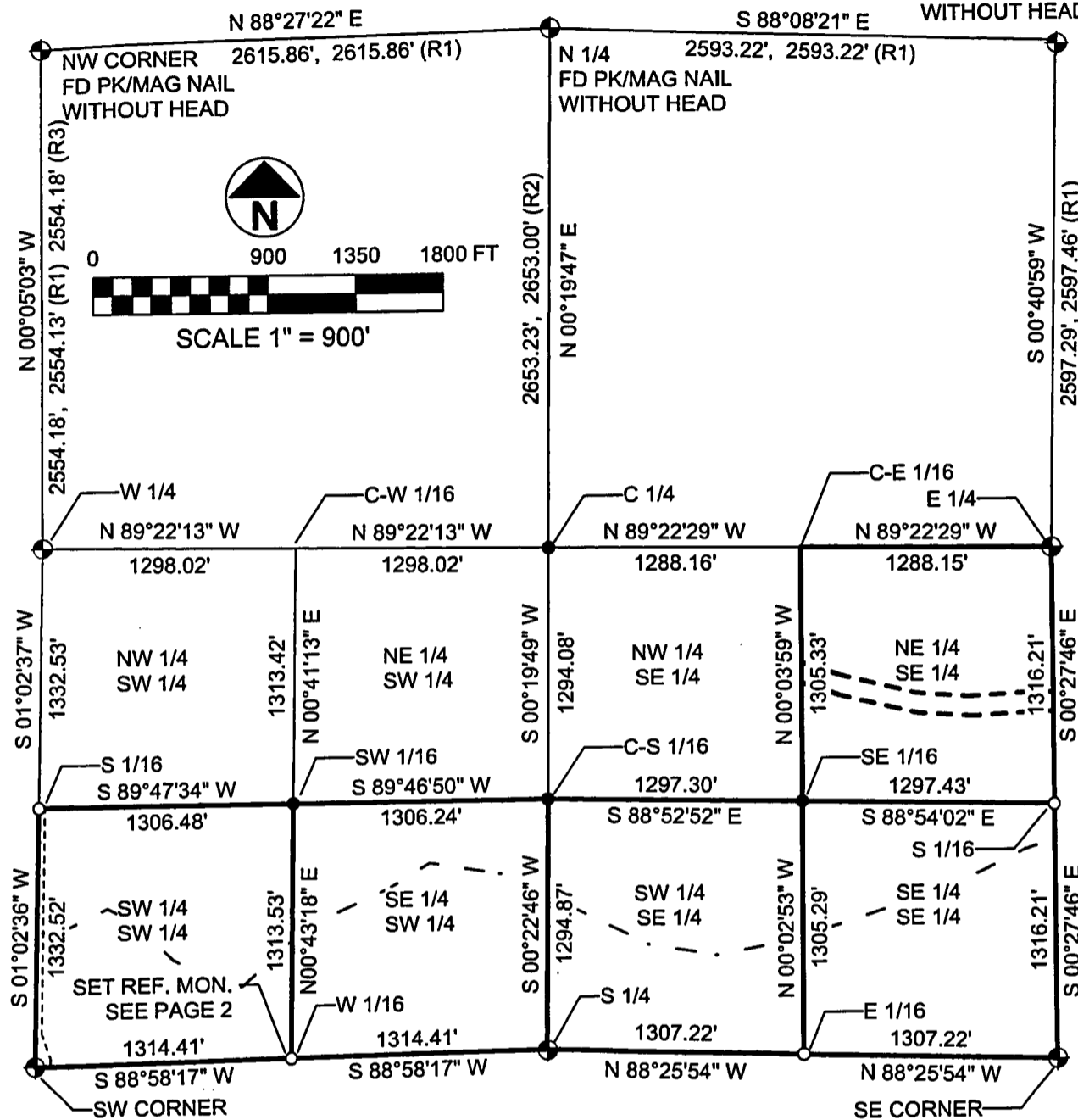


# PLAT OF SURVEY

THE S 1/2 OF THE S 1/2 & THE NE 1/4 OF THE SE 1/4,  
SECTION 15, T35N, R15E,  
TOWN OF BLACKWELL, FOREST COUNTY, WISCONSIN

NE CORNER  
FD PK/MAG NAIL  
WITHOUT HEAD



I HEREBY CERTIFY ON BEHALF OF MOUNTAIN ENGINEERING, INC. THAT SAID SURVEY AND THE ABOVE MAP WERE MADE IN ACCORDANCE WITH THE ACCEPTABLE PROFESSIONAL STANDARDS IN ACCORDANCE WITH APPLICABLE SECTIONS OF CHAPTER 19 OF WISCONSIN ADMINISTRATION CODE AND THAT THE INFORMATION CONTAINED THEREON IS, TO THE BEST OF MY KNOWLEDGE, INFORMATION AND BELIEF, A TRUE AND ACCURATE REPRESENTATION THEREOF.

*Thomas M. Healy*  
THOMAS M. HEALY, PLS No. S-2546  
SURVEYOR

**LEGEND:**

- ⊙ GOVERNMENT CORNER
- SET 1" PIPE WITH SURVEY CAP
- FOUND CORNER AS NOTED
- (T) = TOTAL DISTANCE
- FD = FOUND
- IP = IRON PIPE
- (R1) = RECORD, USFS PLAT OF SURVEY
- (R2) = RECORD, 2005 TREML S-2197 SURVEY
- (R3) = RECORD, 2002 TREML S-2197 SURVEY

**MOUNTAIN ENGINEERING, INC.  
AND SURVEYING**

N2960 North US Hwy. 2  
Iron Mountain, Michigan 49801  
Phone 906-779-5762 Fax 906-779-5789  
Email mtnengineering@chartermi.net

**PREPARED FOR:**

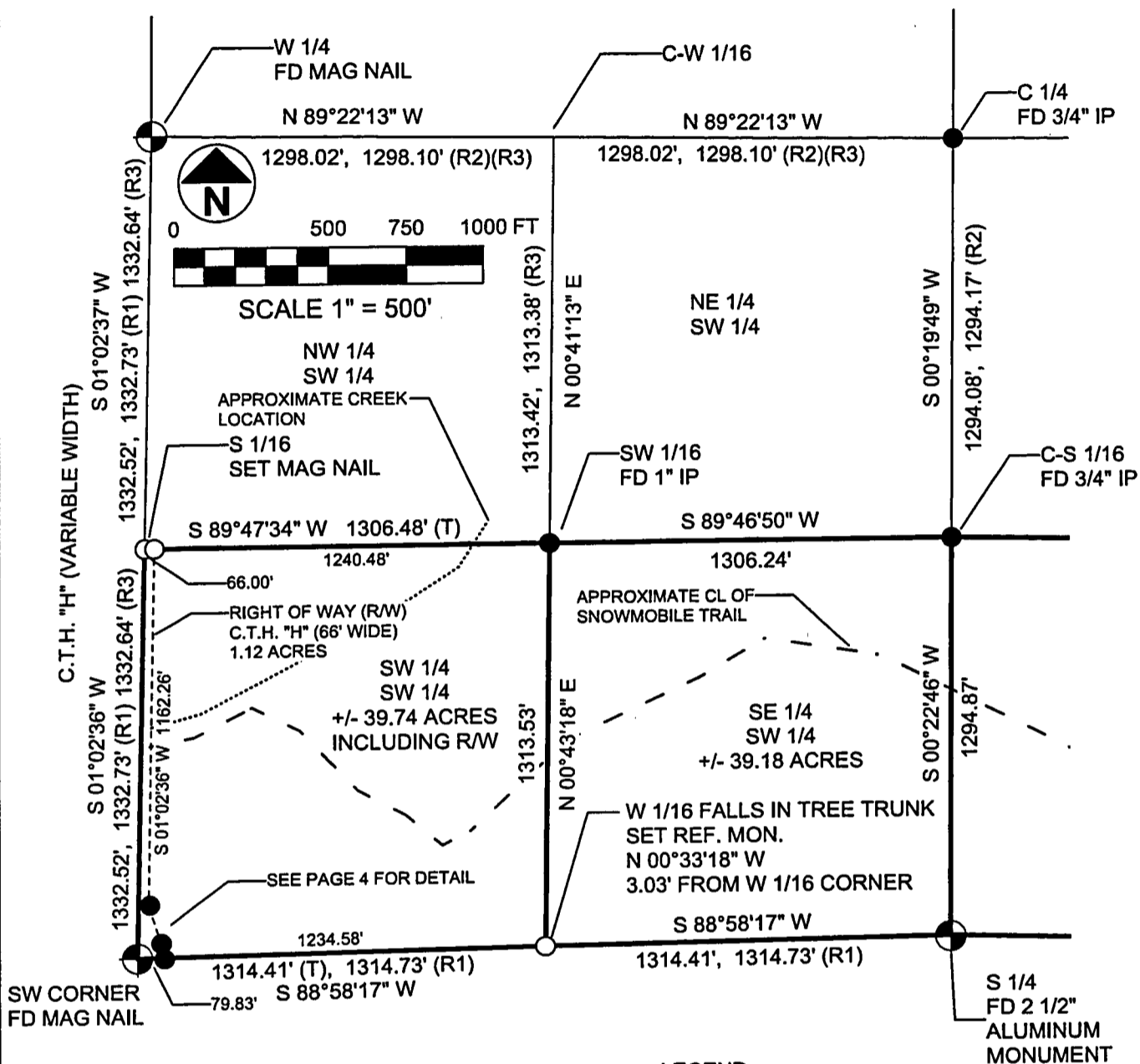
FOREST COUNTY POTAWATOMI  
PO BOX 340  
CRANDON, WI 54520

DATE: <b>REvised</b> JULY 21, 2016	BEARING BASIS: GPS GRID AZIMUTH	JOB NAME: FCP SECTION 15-35-15	PAGE 1 OF 4
---------------------------------------	------------------------------------	-----------------------------------	-------------

THE OWNER AGREES TO INDEMNIFY AND HOLD MOUNTAIN ENGINEERING, INC. HARMLESS FROM ANY DAMAGE, LIABILITY OR COST, INCLUDING ATTORNEY'S FEES AND COST OF DEFENSE ARISING FROM ANY CHANGES OR ALTERATIONS MADE BY ANYONE OTHER THAN MOUNTAIN ENGINEERING, INC., OR FROM ANY REUSE OF THE DRAWINGS AND DATA WITHOUT THE PRIOR WRITTEN CONSENT OF MOUNTAIN ENGINEERING, INC.

# PLAT OF SURVEY

THE S 1/2 OF THE S 1/2 & THE NE 1/4 OF THE SE 1/4,  
SECTION 15, T35N, R15E,  
TOWN OF BLACKWELL, FOREST COUNTY, WISCONSIN



I HEREBY CERTIFY ON BEHALF OF MOUNTAIN ENGINEERING, INC. THAT SAID SURVEY AND THE ABOVE MAP WERE MADE IN ACCORDANCE WITH THE ACCEPTABLE PROFESSIONAL STANDARDS IN ACCORDANCE WITH APPLICABLE SECTIONS OF CHAPTER AREA OF WISCONSIN ADMINISTRATION CODE AND THAT THE INFORMATION CONTAINED THEREON IS, TO THE BEST OF MY KNOWLEDGE, INFORMATION AND BELIEF, A TRUE AND ACCURATE REPRESENTATION THEREOF.

**LEGEND:**

- ⊕ GOVERNMENT CORNER
- SET 1" PIPE WITH SURVEY CAP
- FOUND CORNER AS NOTED
- (T) = TOTAL DISTANCE
- FD = FOUND
- IP = IRON PIPE
- (R1) = RECORD, USFS PLAT OF SURVEY
- (R2) = RECORD, 2005 TREML S-2197 SURVEY
- (R3) = RECORD, 2002 TREML S-2197 SURVEY

*THOMAS M. HEALY*  
**THOMAS M. HEALY, PLS No. S-2546**  
**SURVEYOR**

**MOUNTAIN ENGINEERING, INC.  
AND SURVEYING**

N2960 North US Hwy. 2  
Iron Mountain, Michigan 49801  
Phone 906-779-5762 Fax 906-779-5789  
Email mtnengineering@chartermi.net

**PREPARED FOR:**

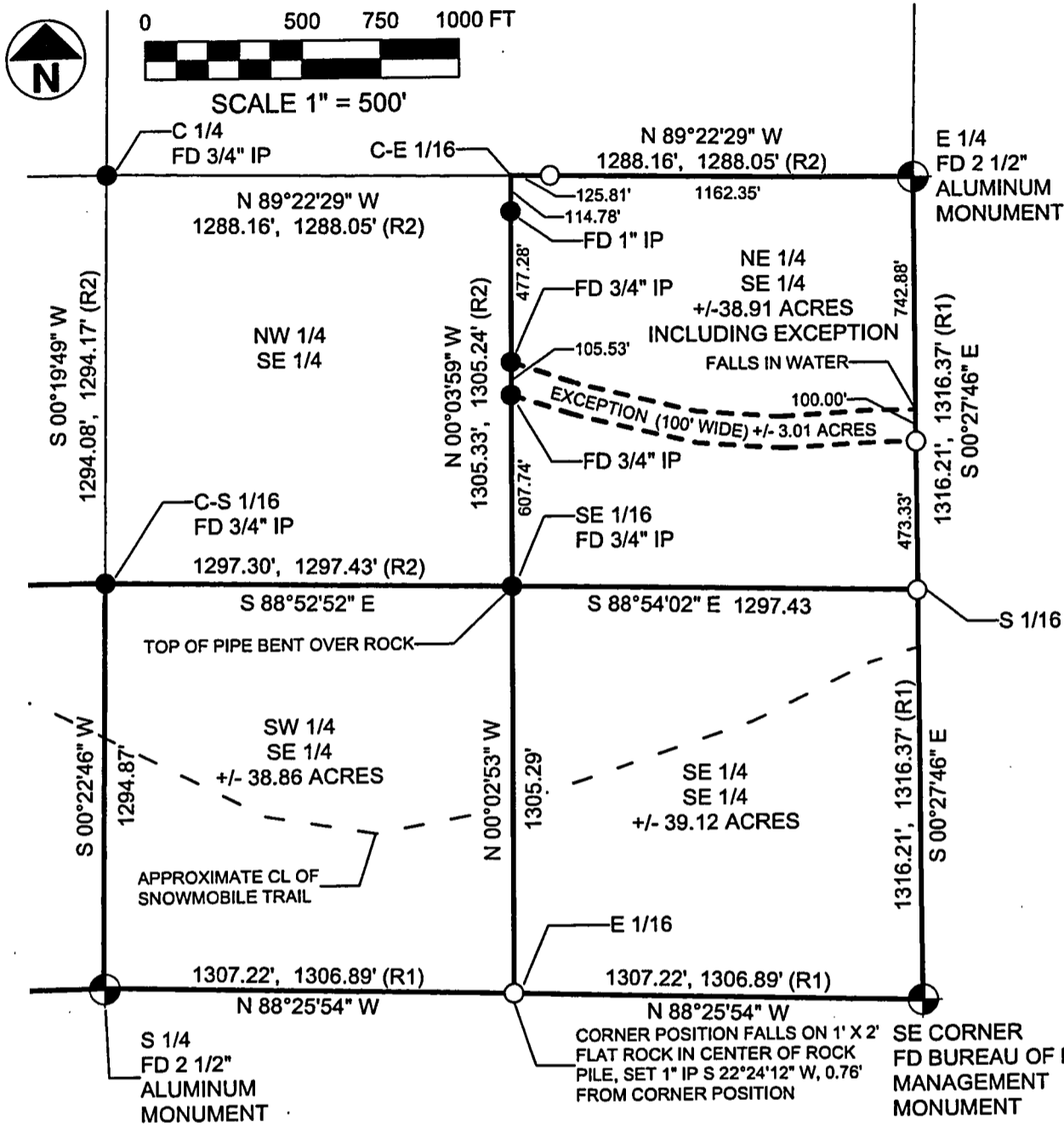
FOREST COUNTY POTAWATOMI  
PO BOX 340  
CRANDON, WI 54520

DATE: <b>REvised</b> JULY 21, 2016	BEARING BASIS: GPS GRID AZIMUTH	JOB NAME: FCP SECTION 15-35-15	PAGE 2 OF 4
---------------------------------------	------------------------------------	-----------------------------------	-------------

THE OWNER AGREES TO INDEMNIFY AND HOLD MOUNTAIN ENGINEERING, INC. HARMLESS FROM ANY DAMAGE, LIABILITY OR COST, INCLUDING ATTORNEY'S FEES AND COST OF DEFENSE ARISING FROM ANY CHANGES OR ALTERATIONS MADE BY ANYONE OTHER THAN MOUNTAIN ENGINEERING, INC., OR FROM ANY REUSE OF THE DRAWINGS AND DATA WITHOUT THE PRIOR WRITTEN CONSENT OF MOUNTAIN ENGINEERING, INC.

# PLAT OF SURVEY

THE S 1/2 OF THE S 1/2 & THE NE 1/4 OF THE SE 1/4,  
SECTION 15, T35N, R15E,  
TOWN OF BLACKWELL, FOREST COUNTY, WISCONSIN



I HEREBY CERTIFY ON BEHALF OF MOUNTAIN ENGINEERING, INC. THAT SAID SURVEY AND THE ABOVE MAP WERE MADE IN ACCORDANCE WITH THE ACCEPTABLE PROFESSIONAL STANDARDS IN ACCORDANCE WITH APPLICABLE SECTIONS OF CHAPTER ATOM, WISCONSIN ADMINISTRATION CODE AND THAT THE INFORMATION CONTAINED THEREON IS, TO THE BEST OF MY KNOWLEDGE, INFORMATION AND BELIEF, A TRUE AND ACCURATE REPRESENTATION THEREOF.

*THOMAS M. HEALY*  
SURVEYOR  
THOMAS M. HEALY, PLS No. S-2546

- LEGEND:**
- ⊕ GOVERNMENT CORNER
  - SET 1" PIPE WITH SURVEY CAP
  - FOUND CORNER AS NOTED
  - (T) = TOTAL DISTANCE
  - FD = FOUND
  - IP = IRON PIPE
  - (R1) = RECORD, USFS PLAT OF SURVEY
  - (R2) = RECORD, 2005 TREML S-2197 SURVEY
  - (R3) = RECORD, 2002 TREML S-2197 SURVEY

**MOUNTAIN ENGINEERING, INC. AND SURVEYING**  
N2960 North US Hwy. 2  
Iron Mountain, Michigan 49801  
Phone 906-779-5762 Fax 906-779-5789  
Email mtnengineering@chartermi.net

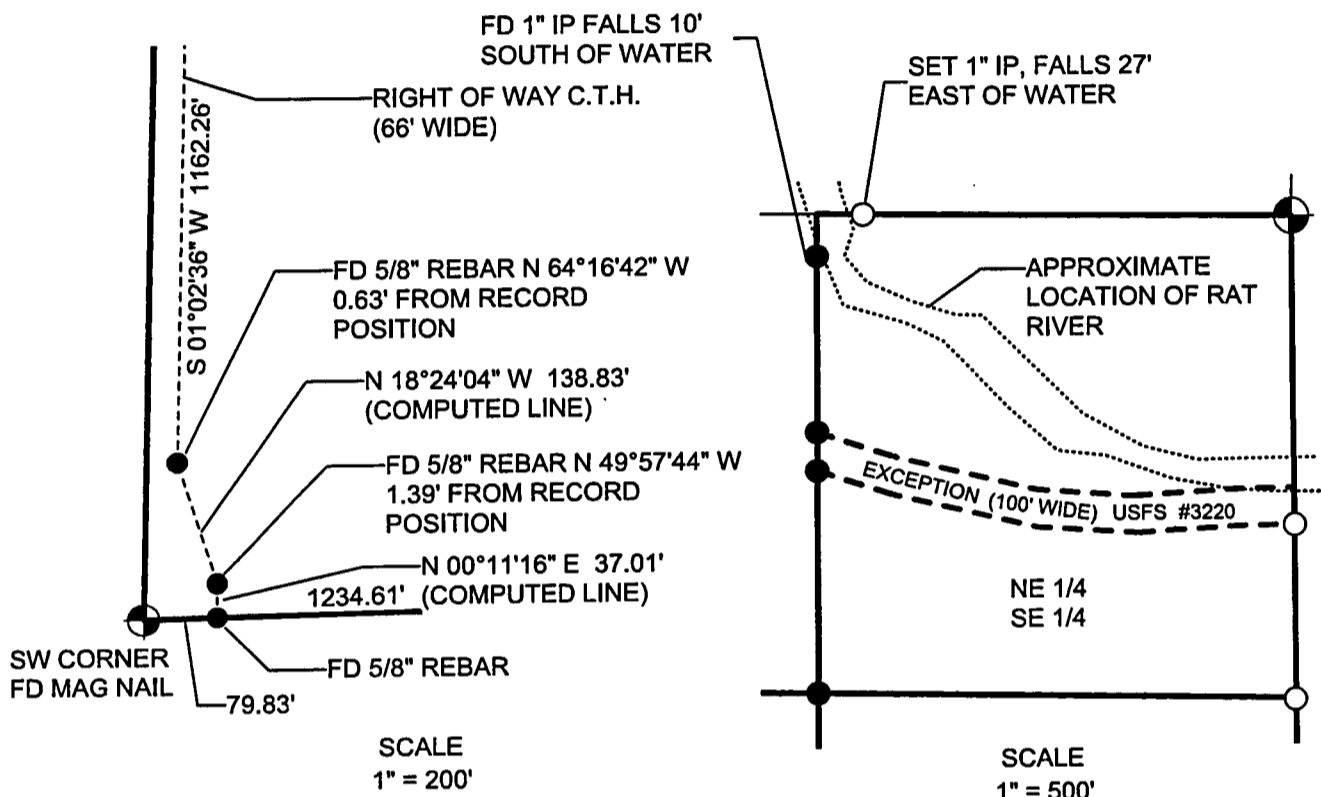
**PREPARED FOR:**  
FOREST COUNTY POTAWATOMI  
PO BOX 340  
CRANDON, WI 54520

DATE: JULY 21, 2016	REVISED	BEARING BASIS: GPS GRID AZIMUTH	JOB NAME: FCP SECTION 15-35-15	PAGE 3 OF 4
---------------------	---------	---------------------------------	--------------------------------	-------------

THE OWNER AGREES TO INDEMNIFY AND HOLD MOUNTAIN ENGINEERING, INC. HARMLESS FROM ANY DAMAGE, LIABILITY OR COST, INCLUDING ATTORNEY'S FEES AND COST OF DEFENSE ARISING FROM ANY CHANGES OR ALTERATIONS MADE BY ANYONE OTHER THAN MOUNTAIN ENGINEERING, INC., OR FROM ANY REUSE OF THE DRAWINGS AND DATA WITHOUT THE PRIOR WRITTEN CONSENT OF MOUNTAIN ENGINEERING, INC.

# PLAT OF SURVEY

THE S 1/2 OF THE S 1/2 & THE NE 1/4 OF THE SE 1/4,  
SECTION 15, T35N, R15E,  
TOWN OF BLACKWELL, FOREST COUNTY, WISCONSIN



RECORD RIGHT OF WAY FOR C.T.H. "H"  
DETERMINED FROM AYRES PLANS  
DATED 04-23-3003, PROJECT #9334-02-00

PARCEL SUBJECT TO ANY PUBLIC OR PRIVATE RIGHTS  
IN ANY PORTIONS OF THE SUBJECT PREMISES LYING  
WITHIN THE LIMITS OF COUNTY HIGHWAY "H"  
FOREST ABSTRACT COMPANY TITLE COMMITMENT  
NUMBER F-11962, DATED AUGUST 21, 2012.

I HEREBY CERTIFY ON BEHALF OF MOUNTAIN  
ENGINEERING, INC. THAT SAID SURVEY AND THE ABOVE  
MAP WERE MADE IN ACCORDANCE WITH THE ACCEPTABLE  
PROFESSIONAL STANDARDS IN ACCORDANCE WITH  
APPLICABLE SECTIONS OF CHAPTER AE-7 OF WISCONSIN  
ADMINISTRATION CODE AND THAT THE INFORMATION  
CONTAINED THEREON IS TO THE BEST OF MY  
KNOWLEDGE, INFORMATION AND BELIEF A TRUE AND  
ACCURATE REPRESENTATION THEREOF.

*THOMAS M. HEALY*  
THOMAS M. HEALY, PLS No. S-2546  
SURVEYOR

**LEGEND:**

- ⊕ GOVERNMENT CORNER
- SET 1" PIPE WITH SURVEY CAP
- FOUND CORNER AS NOTED
- (T) = TOTAL DISTANCE
- FD = FOUND
- IP = IRON PIPE
- (R1) = RECORD, USFS PLAT OF SURVEY
- (R2) = RECORD, 2005 TREML S-2197 SURVEY
- (R3) = RECORD, 2002 TREML S-2197 SURVEY

**MOUNTAIN ENGINEERING, INC.  
AND SURVEYING**

N2960 North US Hwy. 2  
Iron Mountain, Michigan 49801  
Phone 906-779-5762 Fax 906-779-5789  
Email mtnengineering@chartermi.net

**PREPARED FOR:**

FOREST COUNTY POTAWATOMI  
PO BOX 340  
CRANDON, WI 54520

DATE:

REVISED  
JULY 21, 2016

BEARING BASIS:

GPS GRID AZIMUTH

JOB NAME:

FCP SECTION 15-35-15

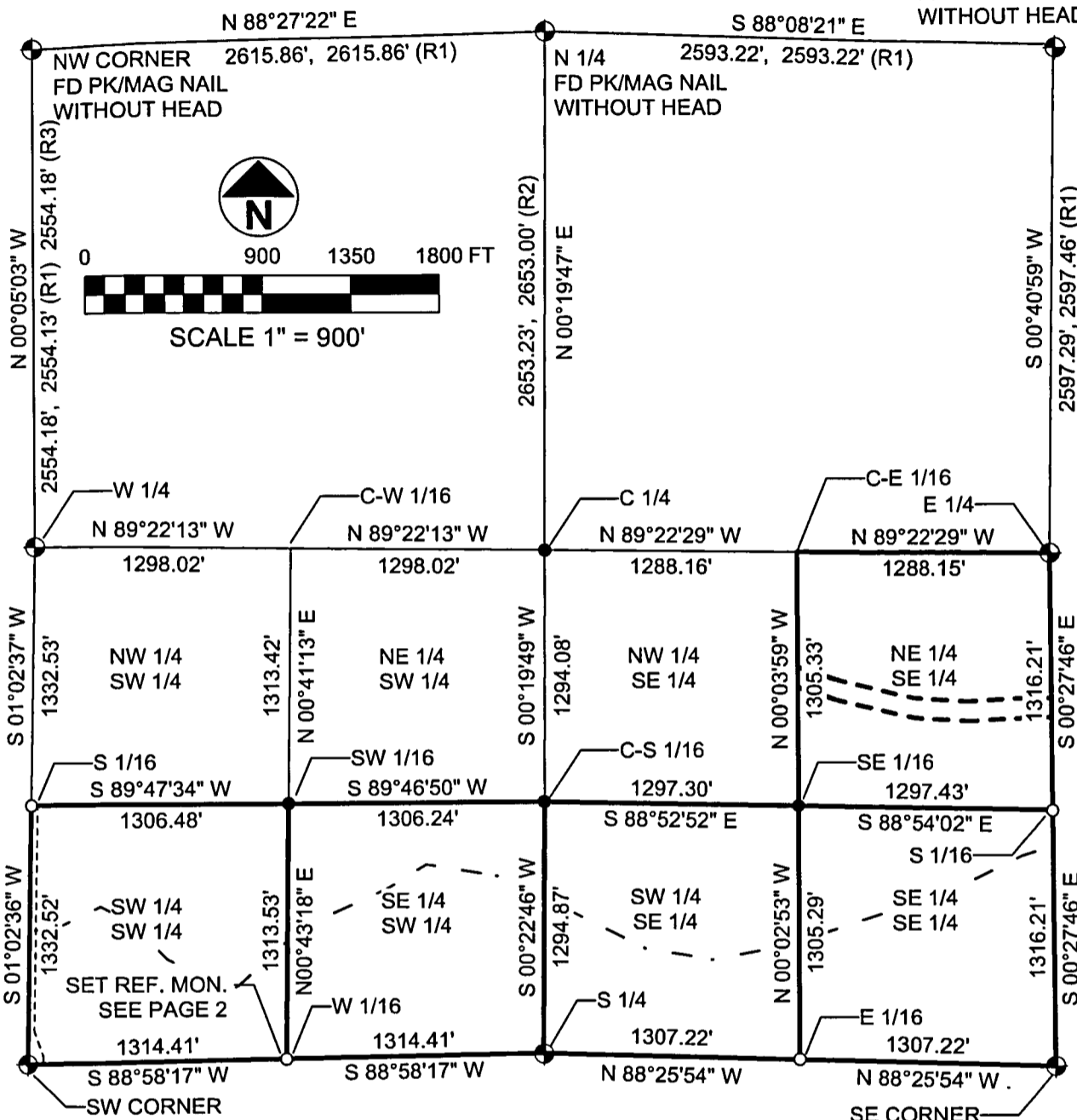
PAGE 4 OF 4

THE OWNER AGREES TO INDEMNIFY AND HOLD MOUNTAIN ENGINEERING, INC. HARMLESS FROM ANY DAMAGE, LIABILITY OR COST, INCLUDING ATTORNEY'S FEES AND COST OF DEFENSE ARISING FROM ANY CHANGES OR ALTERATIONS MADE BY ANYONE OTHER THAN MOUNTAIN ENGINEERING, INC., OR FROM ANY REUSE OF THE DRAWINGS AND DATA WITHOUT THE PRIOR WRITTEN CONSENT OF MOUNTAIN ENGINEERING, INC.

# PLAT OF SURVEY

THE S 1/2 OF THE S 1/2 & THE NE 1/4 OF THE SE 1/4,  
SECTION 15, T35N, R15E,  
TOWN OF BLACKWELL, FOREST COUNTY, WISCONSIN

NE CORNER  
FD PK/MAG NAIL  
WITHOUT HEAD



I HEREBY CERTIFY ON BEHALF OF MOUNTAIN ENGINEERING, INC. THAT SAID SURVEY AND THE ABOVE MAP WERE MADE IN ACCORDANCE WITH THE ACCEPTABLE PROFESSIONAL STANDARDS IN ACCORDANCE WITH APPLICABLE SECTIONS OF CHAPTERS 19.01, 19.02, 19.03, 19.04, 19.05, 19.06, 19.07, 19.08, 19.09, 19.10, 19.11, 19.12, 19.13, 19.14, 19.15, 19.16, 19.17, 19.18, 19.19, 19.20, 19.21, 19.22, 19.23, 19.24, 19.25, 19.26, 19.27, 19.28, 19.29, 19.30, 19.31, 19.32, 19.33, 19.34, 19.35, 19.36, 19.37, 19.38, 19.39, 19.40, 19.41, 19.42, 19.43, 19.44, 19.45, 19.46, 19.47, 19.48, 19.49, 19.50, 19.51, 19.52, 19.53, 19.54, 19.55, 19.56, 19.57, 19.58, 19.59, 19.60, 19.61, 19.62, 19.63, 19.64, 19.65, 19.66, 19.67, 19.68, 19.69, 19.70, 19.71, 19.72, 19.73, 19.74, 19.75, 19.76, 19.77, 19.78, 19.79, 19.80, 19.81, 19.82, 19.83, 19.84, 19.85, 19.86, 19.87, 19.88, 19.89, 19.90, 19.91, 19.92, 19.93, 19.94, 19.95, 19.96, 19.97, 19.98, 19.99, 19.100 OF THE WISCONSIN ADMINISTRATION CODE AND THAT THE INFORMATION CONTAINED THEREON IS TO THE BEST OF MY KNOWLEDGE, INFORMATION AND BELIEF A TRUE AND ACCURATE REPRESENTATION THEREOF.

*THOMAS M. HEALY*  
SURVEYOR

THOMAS M. HEALY, PLS No. S-2546

**LEGEND:**

- ⊙ GOVERNMENT CORNER
- SET 1" PIPE WITH SURVEY CAP
- FOUND CORNER AS NOTED
- (T) = TOTAL DISTANCE
- FD = FOUND
- IP = IRON PIPE
- (R1) = RECORD, USFS PLAT OF SURVEY
- (R2) = RECORD, 2005 TREML S-2197 SURVEY
- (R3) = RECORD, 2002 TREML S-2197 SURVEY

**MOUNTAIN ENGINEERING, INC.  
AND SURVEYING**

N2960 North US Hwy. 2  
Iron Mountain, Michigan 49801  
Phone 906-779-5762 Fax 906-779-5789  
Email mtnengineering@chartermi.net

**PREPARED FOR:**

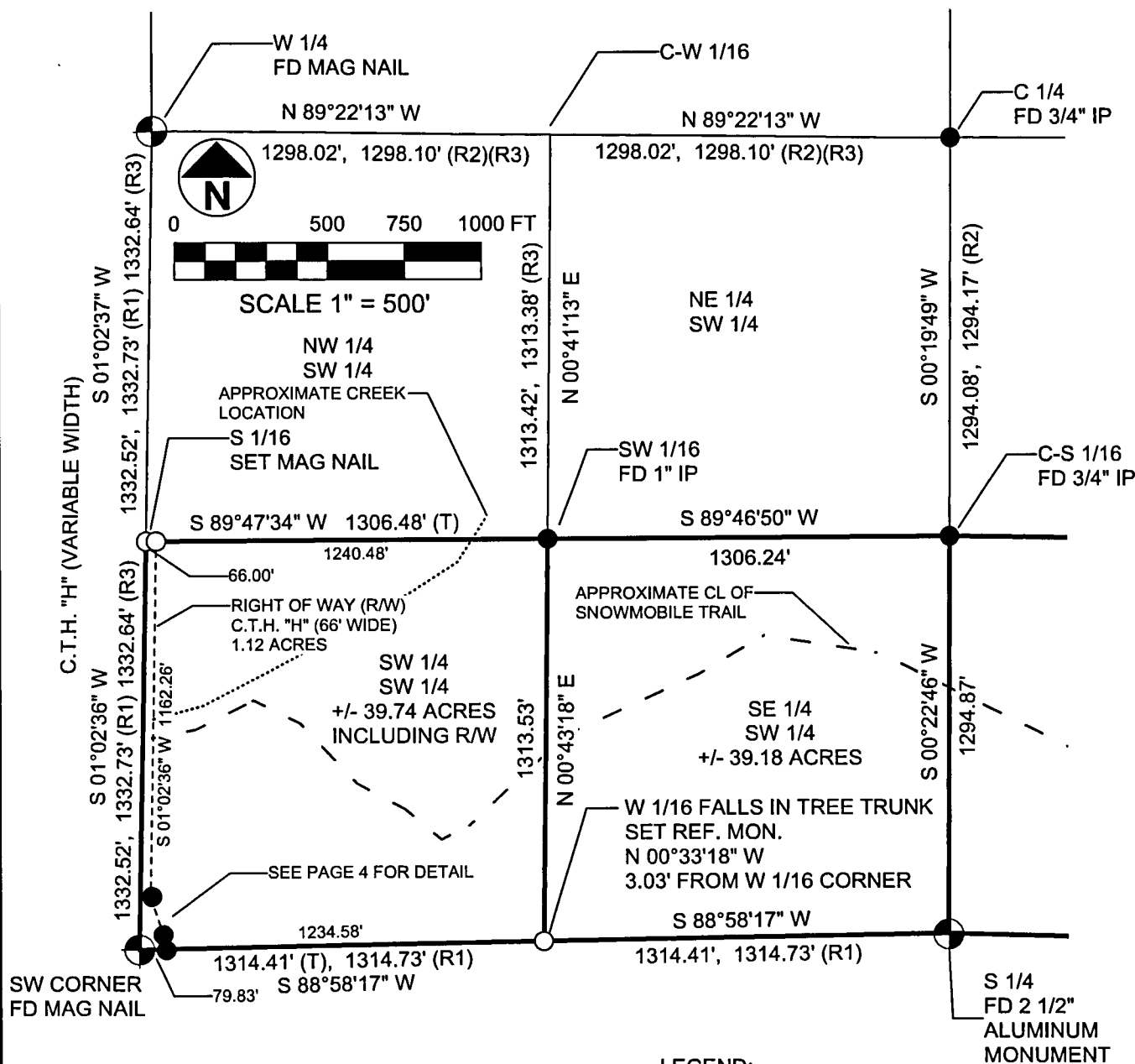
FOREST COUNTY POTAWATOMI  
PO BOX 340  
CRANDON, WI 54520

DATE:	REVISED JULY 21, 2016	BEARING BASIS: GPS GRID AZIMUTH	JOB NAME: FCP SECTION 15-35-15	PAGE 1 OF 4
-------	--------------------------	------------------------------------	-----------------------------------	-------------

THE OWNER AGREES TO INDEMNIFY AND HOLD MOUNTAIN ENGINEERING, INC. HARMLESS FROM ANY DAMAGE, LIABILITY OR COST, INCLUDING ATTORNEY'S FEES AND COST OF DEFENSE ARISING FROM ANY CHANGES OR ALTERATIONS MADE BY ANYONE OTHER THAN MOUNTAIN ENGINEERING, INC., OR FROM ANY REUSE OF THE DRAWINGS AND DATA WITHOUT THE PRIOR WRITTEN CONSENT OF MOUNTAIN ENGINEERING, INC.

# PLAT OF SURVEY

THE S 1/2 OF THE S 1/2 & THE NE 1/4 OF THE SE 1/4,  
SECTION 15, T35N, R15E,  
TOWN OF BLACKWELL, FOREST COUNTY, WISCONSIN



I HEREBY CERTIFY ON BEHALF OF MOUNTAIN ENGINEERING, INC. THAT SAID SURVEY AND THE ABOVE MAP WERE MADE IN ACCORDANCE WITH THE ACCEPTABLE PROFESSIONAL STANDARDS IN ACCORDANCE WITH APPLICABLE SECTIONS OF CHAPTER AE-10 OF WISCONSIN ADMINISTRATION CODE AND THAT THE INFORMATION CONTAINED THEREON IS, TO THE BEST OF MY KNOWLEDGE, INFORMATION AND BELIEF, TRUE AND ACCURATE REPRESENTATION THEREOF.

**LEGEND:**

- ⊙ GOVERNMENT CORNER
- SET 1" PIPE WITH SURVEY CAP
- FOUND CORNER AS NOTED
- (T) = TOTAL DISTANCE
- FD = FOUND
- IP = IRON PIPE
- (R1) = RECORD, USFS PLAT OF SURVEY
- (R2) = RECORD, 2005 TREML S-2197 SURVEY
- (R3) = RECORD, 2002 TREML S-2197 SURVEY

*THOMAS M. HEALY*  
**THOMAS M. HEALY, PLS No. S-2546**  
**SURVEYOR**

**MOUNTAIN ENGINEERING, INC. AND SURVEYING**  
 N2960 North US Hwy. 2  
 Iron Mountain, Michigan 49801  
 Phone 906-779-5762 Fax 906-779-5789  
 Email mtengineering@chartermi.net

**PREPARED FOR:**  
**FOREST COUNTY POTAWATOMI**  
**PO BOX 340**  
**CRANDON, WI 54520**

<b>DATE:</b> JULY 21, 2016	<b>REVISED:</b> JULY 21, 2016	<b>BEARING BASIS:</b> GPS GRID AZIMUTH	<b>JOB NAME:</b> FCP SECTION 15-35-15	<b>PAGE 2 OF 4</b>
-------------------------------	----------------------------------	---	--	--------------------

THE OWNER AGREES TO INDEMNIFY AND HOLD MOUNTAIN ENGINEERING, INC. HARMLESS FROM ANY DAMAGE, LIABILITY OR COST, INCLUDING ATTORNEY'S FEES AND COST OF DEFENSE ARISING FROM ANY CHANGES OR ALTERATIONS MADE BY ANYONE OTHER THAN MOUNTAIN ENGINEERING, INC., OR FROM ANY REUSE OF THE DRAWINGS AND DATA WITHOUT THE PRIOR WRITTEN CONSENT OF MOUNTAIN ENGINEERING, INC.

# PLAT OF SURVEY

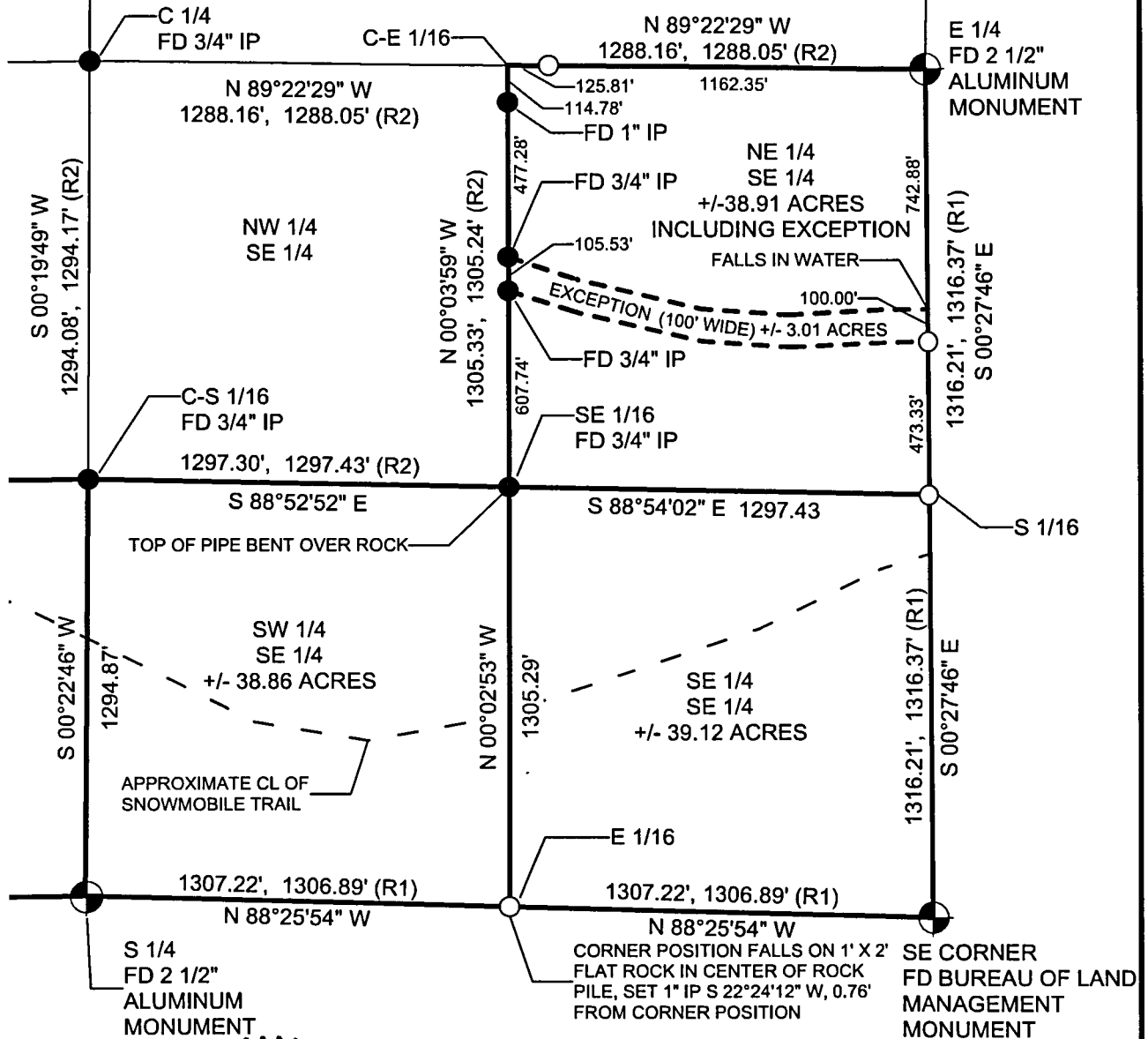
THE S 1/2 OF THE S 1/2 & THE NE 1/4 OF THE SE 1/4,  
SECTION 15, T35N, R15E,  
TOWN OF BLACKWELL, FOREST COUNTY, WISCONSIN



0 500 750 1000 FT



SCALE 1" = 500'



I HEREBY CERTIFY ON BEHALF OF MOUNTAIN ENGINEERING, INC. THAT SAID SURVEY AND THE ABOVE MAP WERE MADE IN ACCORDANCE WITH THE ACCEPTABLE PROFESSIONAL STANDARDS IN ACCORDANCE WITH APPLICABLE SECTIONS OF CHAPTER 19.01, 19.02, 19.03, 19.04, 19.05, 19.06, 19.07, 19.08, 19.09, 19.10, 19.11, 19.12, 19.13, 19.14, 19.15, 19.16, 19.17, 19.18, 19.19, 19.20, 19.21, 19.22, 19.23, 19.24, 19.25, 19.26, 19.27, 19.28, 19.29, 19.30, 19.31, 19.32, 19.33, 19.34, 19.35, 19.36, 19.37, 19.38, 19.39, 19.40, 19.41, 19.42, 19.43, 19.44, 19.45, 19.46, 19.47, 19.48, 19.49, 19.50, 19.51, 19.52, 19.53, 19.54, 19.55, 19.56, 19.57, 19.58, 19.59, 19.60, 19.61, 19.62, 19.63, 19.64, 19.65, 19.66, 19.67, 19.68, 19.69, 19.70, 19.71, 19.72, 19.73, 19.74, 19.75, 19.76, 19.77, 19.78, 19.79, 19.80, 19.81, 19.82, 19.83, 19.84, 19.85, 19.86, 19.87, 19.88, 19.89, 19.90, 19.91, 19.92, 19.93, 19.94, 19.95, 19.96, 19.97, 19.98, 19.99, 19.100 OF WISCONSIN ADMINISTRATION CODE AND THAT THE INFORMATION CONTAINED THEREON IS, TO THE BEST OF MY KNOWLEDGE, INFORMATION AND BELIEF, A TRUE AND ACCURATE REPRESENTATION THEREOF.

*THOMAS M. HEALY*  
SURVEYOR

THOMAS M. HEALY, PLS No. S-2546

**LEGEND:**

- ⊕ GOVERNMENT CORNER
- SET 1" PIPE WITH SURVEY CAP
- FOUND CORNER AS NOTED
- (T) = TOTAL DISTANCE
- FD = FOUND
- IP = IRON PIPE
- (R1) = RECORD, USFS PLAT OF SURVEY
- (R2) = RECORD, 2005 TREML S-2197 SURVEY
- (R3) = RECORD, 2002 TREML S-2197 SURVEY

**MOUNTAIN ENGINEERING, INC.  
AND SURVEYING**

N2960 North US Hwy. 2  
Iron Mountain, Michigan 49801  
Phone 906-779-5762 Fax 906-779-5789  
Email mtengineering@chartermi.net

**PREPARED FOR:**

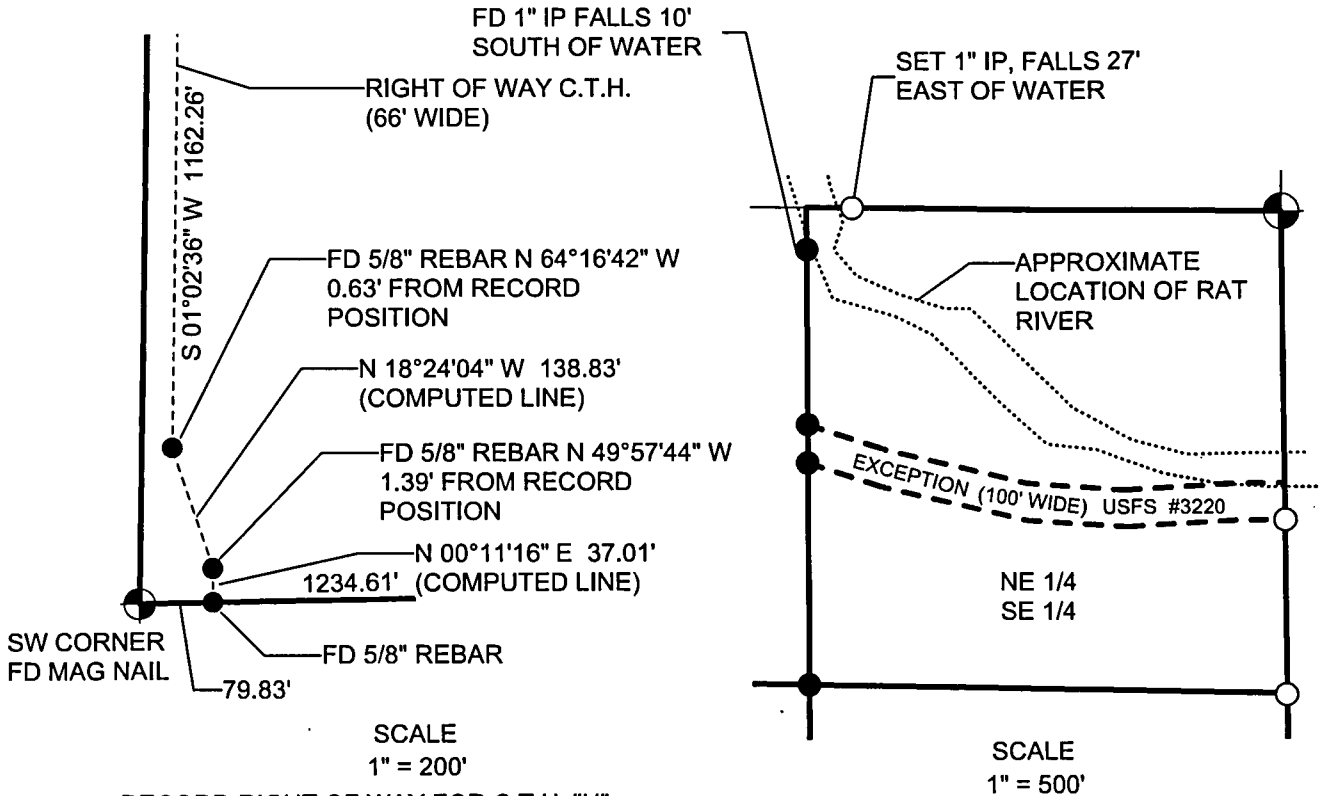
FOREST COUNTY POTAWATOMI  
PO BOX 340  
CRANDON, WI 54520

DATE:	REVISED	BEARING BASIS:	JOB NAME:	
	JULY 21, 2016	GPS GRID AZIMUTH	FCP SECTION 15-35-15	PAGE 3 OF 4

THE OWNER AGREES TO INDEMNIFY AND HOLD MOUNTAIN ENGINEERING, INC. HARMLESS FROM ANY DAMAGE, LIABILITY OR COST, INCLUDING ATTORNEY'S FEES AND COST OF DEFENSE ARISING FROM ANY CHANGES OR ALTERATIONS MADE BY ANYONE OTHER THAN MOUNTAIN ENGINEERING, INC., OR FROM ANY REUSE OF THE DRAWINGS AND DATA WITHOUT THE PRIOR WRITTEN CONSENT OF MOUNTAIN ENGINEERING, INC.

# PLAT OF SURVEY

THE S 1/2 OF THE S 1/2 & THE NE 1/4 OF THE SE 1/4,  
SECTION 15, T35N, R15E,  
TOWN OF BLACKWELL, FOREST COUNTY, WISCONSIN



RECORD RIGHT OF WAY FOR C.T.H. "H" DETERMINED FROM AYRES PLANS DATED 04-23-3003, PROJECT #9334-02-00

EXCEPTION RECORDED IN LIBER 77 PAGE 201

PARCEL SUBJECT TO ANY PUBLIC OR PRIVATE RIGHTS IN ANY PORTIONS OF THE SUBJECT PREMISES LYING WITHIN THE LIMITS OF COUNTY HIGHWAY "H" FOREST ABSTRACT COMPANY TITLE COMMITMENT NUMBER F-11962, DATED AUGUST 21, 2012.

I HEREBY CERTIFY ON BEHALF OF MOUNTAIN ENGINEERING, INC. THAT SAID SURVEY AND THE ABOVE MAP WERE MADE IN ACCORDANCE WITH THE ACCEPTABLE PROFESSIONAL STANDARDS IN ACCORDANCE WITH APPLICABLE SECTIONS OF CHAPTER AE-7 OF WISCONSIN ADMINISTRATION CODE AND THAT THE INFORMATION CONTAINED THEREON IS, TO THE BEST OF MY KNOWLEDGE, INFORMATION AND BELIEF, A TRUE AND ACCURATE REPRESENTATION THEREOF.

*Thomas M. Healy*  
THOMAS M. HEALY, PLS No. S-2546

LEGEND:

- ⊕ GOVERNMENT CORNER
- SET 1" PIPE WITH SURVEY CAP
- FOUND CORNER AS NOTED
- (T) = TOTAL DISTANCE
- FD = FOUND
- IP = IRON PIPE
- (R1) = RECORD, USFS PLAT OF SURVEY
- (R2) = RECORD, 2005 TREML S-2197 SURVEY
- (R3) = RECORD, 2002 TREML S-2197 SURVEY

### MOUNTAIN ENGINEERING, INC. AND SURVEYING

N2960 North US Hwy. 2  
Iron Mountain, Michigan 49801  
Phone 906-779-5762 Fax 906-779-5789  
Email mtnengineering@chartermi.net

PREPARED FOR:

FOREST COUNTY POTAWATOMI  
PO BOX 340  
CRANDON, WI 54520

DATE:	REVISED	BEARING BASIS:	JOB NAME:	PAGE 4 OF 4
	JULY 21, 2016	GPS GRID AZIMUTH	FCP SECTION 15-35-15	

THE OWNER AGREES TO INDEMNIFY AND HOLD MOUNTAIN ENGINEERING, INC. HARMLESS FROM ANY DAMAGE, LIABILITY OR COST, INCLUDING ATTORNEY'S FEES AND COST OF DEFENSE ARISING FROM ANY CHANGES OR ALTERATIONS MADE BY ANYONE OTHER THAN MOUNTAIN ENGINEERING, INC., OR FROM ANY REUSE OF THE DRAWINGS AND DATA WITHOUT THE PRIOR WRITTEN CONSENT OF MOUNTAIN ENGINEERING, INC.