

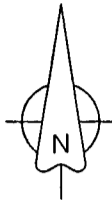
RECEIVED

JUN 03 21

CO. TREASURER

# PART OF THE NORTHWEST QUARTER OF THE SOUTHWEST QUARTER, SECTION 15, T35N R15E, TOWN OF BLACKWELL, FOREST COUNTY, WISCONSIN

FOREST CO SURVEYOR  
FILE # 351515-20210525  
DATE 07/02/2021 BY JEA

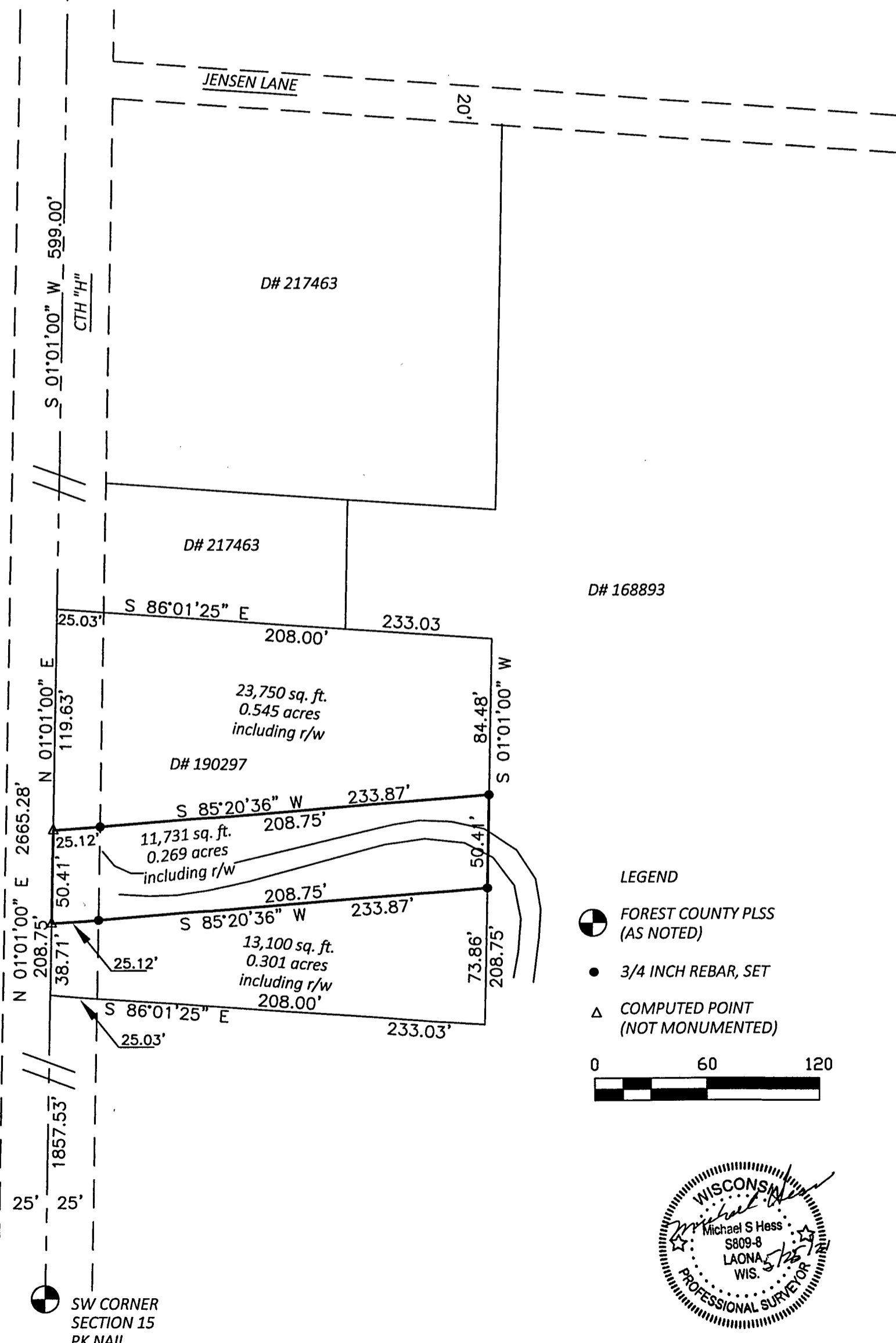


BEARINGS REFERENCED TO THE  
FOREST COUNTY COORDINATE SYSTEM  
NAD 83 (2011)




NW CORNER  
SECTION 15  
PK NAIL

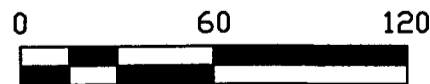


W QTR  
SECTION 15  
FROM TIES



LEGEND

-  FOREST COUNTY PLSS (AS NOTED)
-  3/4 INCH REBAR, SET
-  COMPUTED POINT (NOT MONUMENTED)



008-132