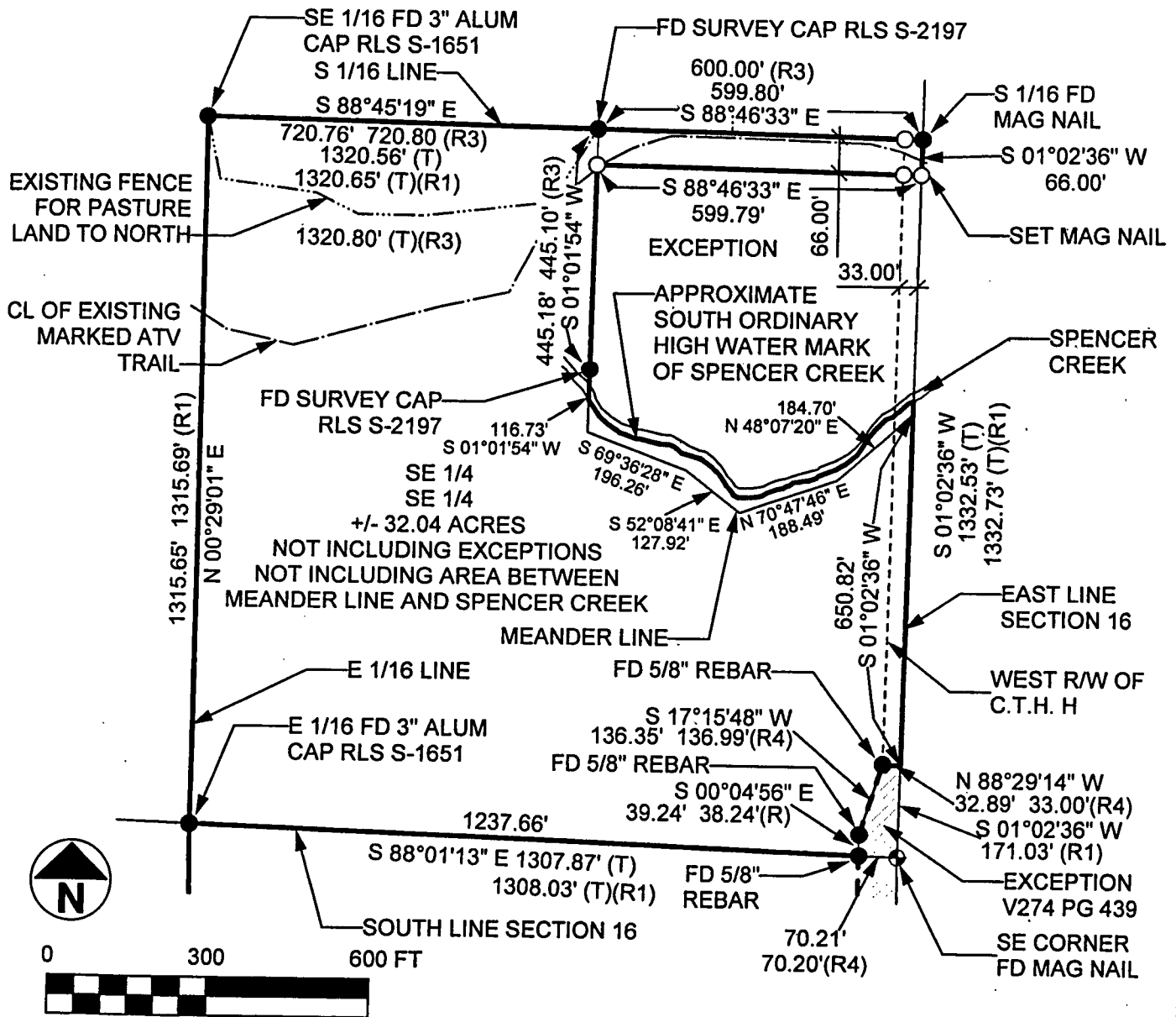


PLAT OF SURVEY

THE E 1/2 OF THE NE 1/4, SECTION 21
 & PART OF THE SE 1/4 OF THE SE 1/4, SECTION 16,
 ALL IN T35N, R15E,
 TOWN OF BLACKWELL, FOREST COUNTY, WISCONSIN



SCALE 1" = 300'

I HEREBY CERTIFY ON BEHALF OF MOUNTAIN ENGINEERING, INC. THAT SAID SURVEY AND THE ABOVE MAP WERE MADE IN ACCORDANCE WITH THE ACCEPTABLE PROFESSIONAL STANDARDS IN ACCORDANCE WITH APPLICABLE SECTIONS OF CHAPTER AE-7 OF WISCONSIN ADMINISTRATIVE CODE AND THAT THE INFORMATION CONTAINED THEREON IS, TO THE BEST OF MY KNOWLEDGE, INFORMATION AND BELIEF, A TRUE AND ACCURATE REPRESENTATION THEREOF.

- LEGEND:**
- ⊕ GOVERNMENT CORNER
 - SET 1" PIPE WITH SURVEY CAP
 - FOUND CORNER AS NOTED
 - (T) = TOTAL DISTANCE
 - FD = FOUND
 - (R1) = RECORD, USFS PLAT OF SURVEY, 1991
 - (R2) = RECORD, USFS PLAT OF SURVEY, 1993
 - (R3) = RECORD, 2002 TREML S-2197 SURVEY