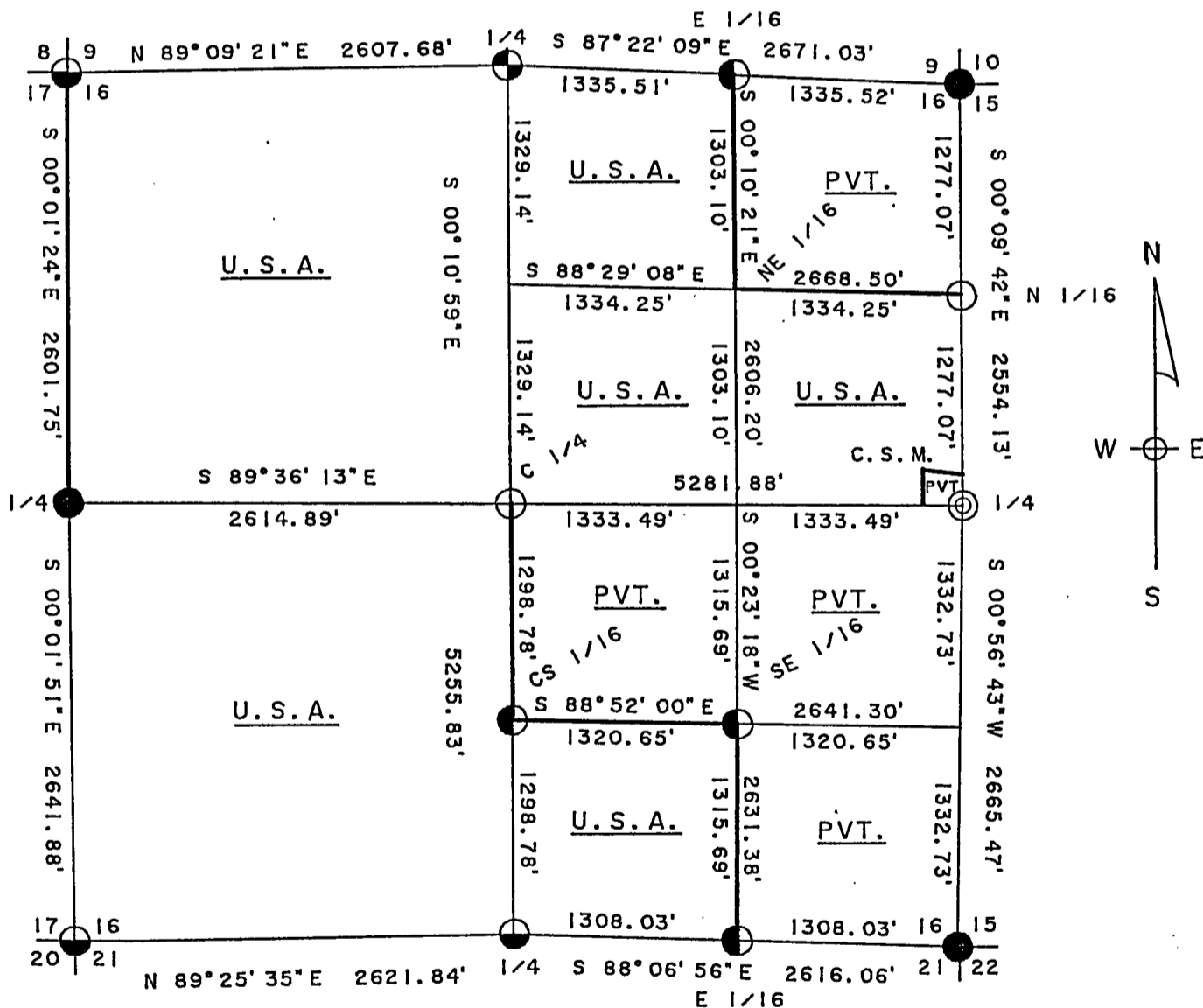
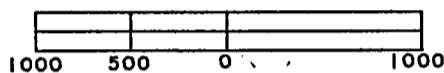


# PLAT OF SURVEY U. S. GOVERNMENT LANDS

Being the NW 1/4; the SW 1/4; the W 1/2 and SE 1/4 of the NE 1/4;  
and the SW 1/4 of the SE 1/4; Section 16, Township 35 North,  
Range 15 East, Fourth Principal Meridian,  
**FOREST COUNTY, WISCONSIN.**

SCALE IN FEET



**LEGEND**

- RAILROAD SPIKE, SET THIS SURVEY.
- ◐ 2 1/2" x 36" ALUMINUM MONUMENT, SET THIS SURVEY.
- ◑ 1" x 36" ALUMINUM MONUMENT, SET THIS SURVEY.
- ⊙ IRON PIPE BELOW ROAD SURFACE, FOUND IN PLACE.
- RAILROAD SPIKE, FOUND IN PLACE.
- ◒ 2" ALUMINUM MONUMENT, FOUND IN PLACE.
- MARKED BOUNDARY LINES OF U. S. GOVERNMENT LANDS.

Stock No. 26273

Sheet 2 of 4

SURVEY NOTES

This survey was made by the U.S. Department of Agriculture, Forest Service, for the purpose of restoring and establishing corners on the perimeter of Section 16 for establishing subdivisional corners within Section 16 and for locating and marking the boundaries of U.S. Government land on their perimeter and within Section 16 Township 35 North, Range 15 East, 4th Principal Meridian, Forest County, Wisconsin.

The U.S. Government lands in this section were acquired in 1935, 1947, 1948 and 1954.

The original government subdivision survey of this township was made in 1859 with a subsequent survey performed in 1904 by N. Smith.

The corner positions recovered, restored and established by this survey are marked by the monument described in the map legend.

The corner positions established were located to an accuracy of one part in 5000.

The bearings between corner positions are true bearings as determined by solar observations.

The field notes of this survey and a copy of this plat are on file in the Forest Supervisor's Office at Rhinelander, Wisconsin.

CORNERS RECOVERED OR RESTORED

1. Section Corner to Sections 8, 9, 16, and 17.  
Corner recovered as set by Milo Stefan (R.L.S.), certificate on file in Forest County, document no. 131261.
2. Section Corner to Sections 9, 10, 15, and 16.  
Corner recovered as set by Alan Harrison (R.L.S.), certificate on file in Forest County, document no. 131261.
3. Section Corner to Sections 15, 16, 21, and 22.  
Corner position recovered marked by a railroad spike set in county hwy. "H" at the intersection of fence lines east and west. Believed to be a perpetuation of the original corner and accepted as such.  
Corner References:

Sugar	5"	S.60°E.	76.35 feet (slope tape)
Power Pole	#3515 21E 10	S.77°W.	41.11 feet
Witness Corner	1"x 36"	West	47.21 feet
White Ash	8"	N.37°W.	89.42 feet
Steel Sign Post		West	48.21 feet

4. Section Corner to Sections 16, 17, 20, and 21.  
Corner recovered as set by Milo Stefan (R.L.S.), certificate on file in Forest County, document no. 138188.
5. Quarter Corner to Sections 9 and 16.  
Corner position restored by double the distance and on line from the Southeast corner section 9, thru the east 1/16 between sections 9 and 16 as call for in a 1904 survey done by N. Smith.  
Corner References:

Sugar	10"	N.30°E.	36.17 feet
Sugar	8"	N.72°E.	5.55 feet
Sugar	8"	N.83°W.	37.80 feet
Steel Sign Post		Southeast	1.05 feet

Stock No. 26273

Sheet 3 of 4

6. Quarter Corner Common to Sections 15 and 16.  
Corner recovered as set by Alan Harrison (R.L.S.), certificate on file in Forest County, document no. 131355.
7. Quarter Corner Common to Sections 16 and 21.  
Corner recovered as set by Milo Stefan (R.L.S.), certificate on file in Forest County, document no. 124186.
8. Quarter Corner Common to Sections 16 and 17.  
Corner recovered as set by Milo Stefan (R.L.S.), certificate on file in Forest County, document no. 138183.
9. East One-Sixteenth Corner Common to Sections 9 and 16.  
Corner position recovered as a post hole with bearing tree evidence as called for in a 1904 survey by N. Smith.  
Corner References:

Black Cherry	12"	N.15°E.	21.53 feet
Sugar	8"	N.83°W.	24.15 feet
Steel Sign Post		North	0.74 feet

CORNERS ESTABLISHED

1. North One-Sixteenth Corner to Sections 15 and 16.  
Corner position established midpoint and on line between the northeast corner and the east quarter corner of Section 16.  
Corner References:
- |                 |             |         |             |
|-----------------|-------------|---------|-------------|
| Red Pine        | 9"          | S.74°W. | 29.98 feet  |
| Power Pole      | #3515 16E21 | N.05°W. | 136.14 feet |
| Witness Corner  |             | West    | 32.86 feet  |
| Steel Sign Post |             | West    | 33.46 feet  |
2. Center Quarter to Section 16.  
Corner established at the intersection of the north-south and east-west quarter lines of Section 16.  
Corner References:
- |                 |         |         |            |
|-----------------|---------|---------|------------|
| Red Pine        | 14"     | N.43°E. | 67.34 feet |
| Iron Pipe       | 1"      | South   | 36.89 feet |
| Witness Corner  | 1"x 36" | S.01°W. | 58.79 feet |
| Red Pine        | 14"     | N.22°W. | 61.64 feet |
| Steel Sign Post |         | South   | 59.58 feet |
3. East One-Sixteenth to Sections 16 and 21.  
Corner established midpoint and on line between the southeast corner and the south quarter corner of Section 16.  
Corner References:
- |                 |     |         |            |
|-----------------|-----|---------|------------|
| Spruce          | 11" | S.28°W. | 21.63 feet |
| Red Pine        | 10" | N.48°W. | 24.60 feet |
| Steel Sign Post |     | North   | 1.38 feet  |
4. Center South One-Sixteenth to Section 16.  
Corner established midpoint and on line between the center quarter corner and the south quarter corner of Section 16.  
Corner References:
- |                 |     |         |            |
|-----------------|-----|---------|------------|
| Sugar           | 6"  | N.36°E. | 42.93 feet |
| Iron Pipe       | 1"  | S.06°E. | 5.23 feet  |
| Red Pine        | 13" | N.70°W. | 18.98 feet |
| Steel Sign Post |     | East    | 1.20 feet  |

Stock No. 26273

Sheet 4 of 4

5. Southeast One-Sixteenth to Section 16.

Corner established at the intersection of the south and east one-sixteenth lines of Section 16.

Corner References:

Iron Pipe	1"	S.44°W.	3.38 feet
Red Pine	12"	S.78°W.	16.73 feet
Red Pine	14"	N.36°W.	16.41 feet
Steel Sign Post		South	1.20 feet

6. Northeast One-Sixteenth to Section 16.

Corner position established at the intersection of the north and east one-sixteenth lines of Section 16. (Position falls in Rat River).

Corner References:

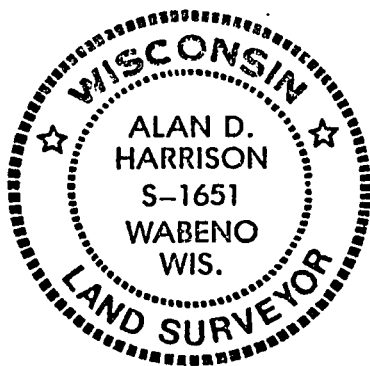
Witness Corner	1"x 60"	N00-10-21E	305.04 feet
Witness Corner	1"x 36"	S88-29-08E	149.93 feet

SURVEYOR'S AFFIDAVIT

State of Wisconsin } SS  
 County of Forest }

I, Alan D. Harrison, Land Surveyor, U.S.D.A. Forest Service and a Registered Land Surveyor in the State of Wisconsin, do hereby certify that I have surveyed and subdivided Section 16, Township 35 North, Range 15 East, Fourth Principal Meridian, State of Wisconsin.

The plat map and the notes herewith are a correct representation of the land surveyed and divided. I have surveyed and subdivided said section in accordance with the rules for survey of the public lands and with the statutes of the State of Wisconsin.



*Alan D. Harrison*  
 LAND SURVEYOR, U.S.D.A. Forest Service  
 R.L.S. Number S-1651  
 State of Wisconsin

Plat ready for filing:

*Sue Vop*  
 District Ranger

Date of Survey: 1991

