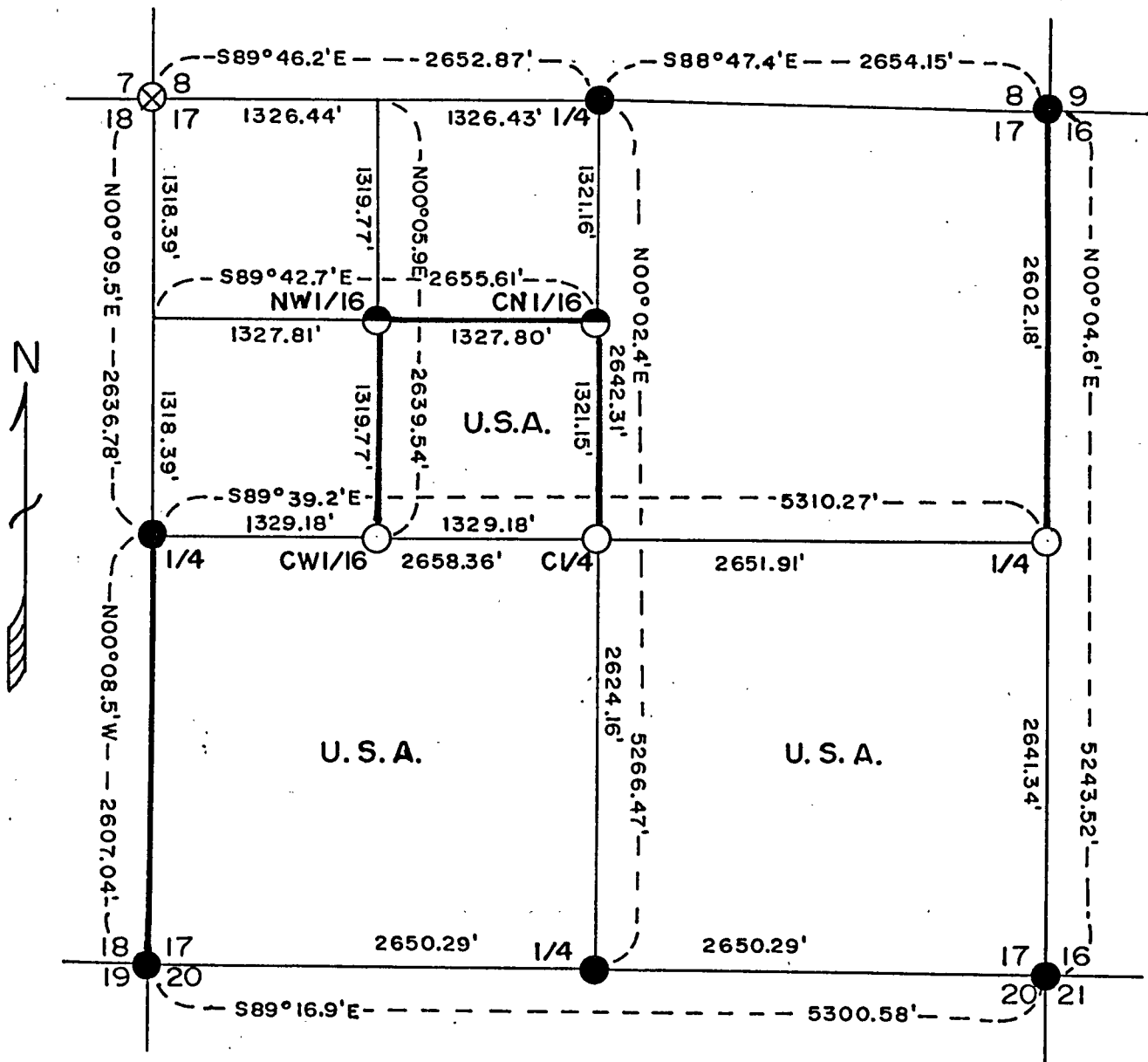
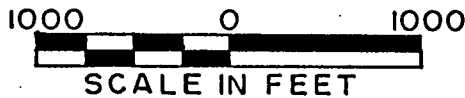


PLAT OF SURVEY U.S. GOVERNMENT LAND

Being the SE1/4, NW1/4 and the S1/2; Section 17, Township
 35 North, Range 15 East, Fourth Principal Meridian
 FOREST COUNTY, WISCONSIN



LEGEND

- Railroad Spike in Road Surface
- ⊗ 3/4" X 24" Iron Rod Below Road Surface
- 2 1/2" Aluminum Monument, 36" Long
- ◐ 1" Aluminum Monument, 36" Long

CONVERSION FACTORS:
 Feet to Meters—3.280833
 Meters to Feet—0.304801

— Marked Boundary Lines, U.S. Government Lands

Stock No. 26273

Sheet 2 of 5

SURVEY NOTES

This survey was made by Milo E. Stefan, a private land surveyor, RLS #1558, under contract with the U. S. Department of Agriculture, Forest Service, for the purpose of restoring and establishing corners on the perimeter of Section 17, for establishing subdivisional corners within Section 17 and for locating and marking the boundaries of U. S. Government lands on the perimeter and within Section 17, Township 35 North, Range 15 East, Fourth Principal Meridian, Forest County, Wisconsin.

The U. S. Government lands in this section were acquired from 1935 - 1943.

The original government subdivision survey of this township was made by James McBride in 1859.

The corner positions recovered, restored and established by this survey are marked by the monument described in the map legend. They are also placed within an accuracy of one part in 3000 or better.

The bearings between corner positions are true bearings as determined by a solar observation.

The field notes of this survey and a copy of the plat are on file in the Forest Supervisor's Office at Rhinelander, Wisconsin.

CORNERS RECOVERED AND RESTORED1. Section Corner to Sections 7, 8, 17 and 18, T35N, R15E.

Corner position restored at intersection of roads east, west and south. Fence line northerly. Corner marked by a 3/4" x 24" iron rod.

Corner References:

Reference Monument		North	25.00 feet
Basswood	6"	S78°E	96.88 feet
W. Birch	5"	S52°W	45.14 feet
Red Pine	14"	N69°W	138.94 feet
Red Pine	14"	N11°W	172.43 feet
Steel Sign Post		NW of R.M.	.65 feet

2. Section Corner to Sections 8, 9, 16 and 17, T35N, R15E.

Corner position found marked by an aluminum monument as set by Milo E. Stefan (RLS #1558). Corner restored from remains of original bearing trees.

Corner References:

Sugar Maple	14"	N20°E	13.17 feet
Hemlock	13"	S38°E	8.06 feet
Hemlock	16"	S46°W	52.96 feet
Sugar Maple	12"	N67°W	23.20 feet
Steel Sign Post		West	1.40 feet

3. Section Corner to Sections 16, 17, 20 and 21, T35N, R15E.

Corner position restored from recovered cedar post as retraced from Melendey's records of 1909.

Corner References:

Red Pine	10"	N35°E	55.24 feet
White Spruce	12"	S48°E	160.22 feet
Red Pine	10"	S73°W	113.73 feet
Red Pine	10"	N32°W	81.46 feet
Steel Sign Post		Northwest	1.61 feet

Stock No. 26273

Sheet 3 of 5

4. Section Corner to Sections 17, 18, 19 and 20, T35N, R15E.
Corner position restored from remains of original bearing trees.

Corner References:

Red Pine	6"	S9°W	37.95 feet
Red Pine	8"	S63°W	51.58 feet
Sugar Maple	12"	N12°W	103.01 feet
Sugar Maple	14"	N58°W	96.87 feet
Steel Sign Post		Southwest	1.73 feet

5. Quarter Corner to Sections 8 and 17, T35N, R15E.
Corner position restored from remains of the original bearing tree and mound of stone.

Corner References:

Sugar Maple	6"	N88°E	33.99 feet
Sugar Maple	11"	S4°E	75.04 feet
Sugar Maple	5"	S24°W	19.63 feet
Sugar Maple	7"	N74°W	34.09 feet
Steel Sign Post		Northeast	1.28 feet

6. Quarter Corner to Sections 16 and 17, T35N, R15E.
Corner position restored at the intersection of County Highway "T" centerline and the north-south section line.

Corner References:

Sugar Maple	4"	N48°E	98.49 feet
Yellow Birch	4"	S46°E	74.57 feet
Sugar Maple	6"	S20°W	38.63 feet
Basswood	6"	N31°W	51.25 feet
Steel Sign Post		NE of R.M.	.98 feet
Reference Monument		North	38.93 feet

7. Quarter Corner to Sections 17 and 20, T35N, R15E.
Corner position restored by lost methods, single proportion between the Section Corners east and west.

Corner References:

Red Pine	7"	N88°E	23.93 feet
Red Pine	7"	S60°E	25.72 feet
Tamarack	14"	S13°E	139.33 feet
Red Pine	7"	N27°W	53.38 feet
Steel Sign Post		Northeast	1.00 feet

8. Quarter Corner to Sections 17 and 18, T35N, R15E.
Corner position found marked by an iron pipe, recognized as the corner for many years. Old fence southerly, centerline of County Highway "T" easterly and old road northerly.

Corner References:

White Ash	4"	N55°E	16.69 feet
Sugar Maple	8"	S65°E	30.77 feet
Sugar Maple	12"	S2°E	18.96 feet
Red Pine	3"	S85°W	15.43 feet
Steel Sign Post		Southeast	1.05 feet

Stock No. 26273

Sheet 4 of 5

CORNERS ESTABLISHED1. Center Quarter Corner to Section 17, T35N, R15E.

Corner position established at the intersection of straight lines between opposing Quarter Corners on the exterior of Section 17.

Corner References:

Reference Monument		North	49.86 feet
Sugar Maple	5"	N31°E	56.71 feet
Sugar Maple	8"	N15°W	49.83 feet
Steel Sign Post		NW of R.M.	1.02 feet

2. Center North Sixteenth Corner to Section 17, T35N, R15E.

Corner position established at midpoint and on line between the Center and North Quarter Corners to Section 17.

Corner References:

Sugar Maple	9"	N25°W	15.92 feet
Red Pine	12"	S47°E	32.84 feet
Red Pine	7"	S3°W	33.77 feet
Steel Sign Post		Southwest	.95 feet

3. Center West Sixteenth Corner to Section 17, T35N, R15E.

Corner position established at midpoint and on line between the Center and West Quarter Corners to Section 17.

Corner References:

Reference Monument		North	42.34 feet
Tamarack	4"	N24°E	101.86 feet
Tamarack	6"	S63°E	75.11 feet
Steel Sign Post		NE of R.M.	.69 feet

4. Northwest Sixteenth Corner to Section 17, T35N, R15E.

Corner position established at the intersection of the North and West Sixteenth line to Section 17.

Corner References:

Sugar Maple	11"	N28°E	4.50 feet
Sugar Maple	10"	S20°E	25.18 feet
Sugar Maple	6"	N43°W	15.27 feet
Steel Sign Post		Southeast	2.81 feet

Stock No. 26273

Sheet 5 of 5

SURVEYORS AFFIDAVITState of Wisconsin) SS
County of Forest)

I, Milo E. Stefan, Registered Land Surveyor in the State of Wisconsin, hereby certify that I have surveyed and subdivided Section 17, township 35 north, range 15 east, Fourth Principal Meridian, State of Wisconsin.

The plat map and the notes herewith are a correct representation of the land surveyed and divided. I have surveyed and subdivided said section in accordance with the rules for the survey of the public lands and with the statutes of the State of Wisconsin.



Date of Survey: 1989

Milo E. Stefan
Registered Land Surveyor, State of Wisconsin
Certificate No. 1558

Plat ready for filing:

Dale B. Stage
District Ranger

