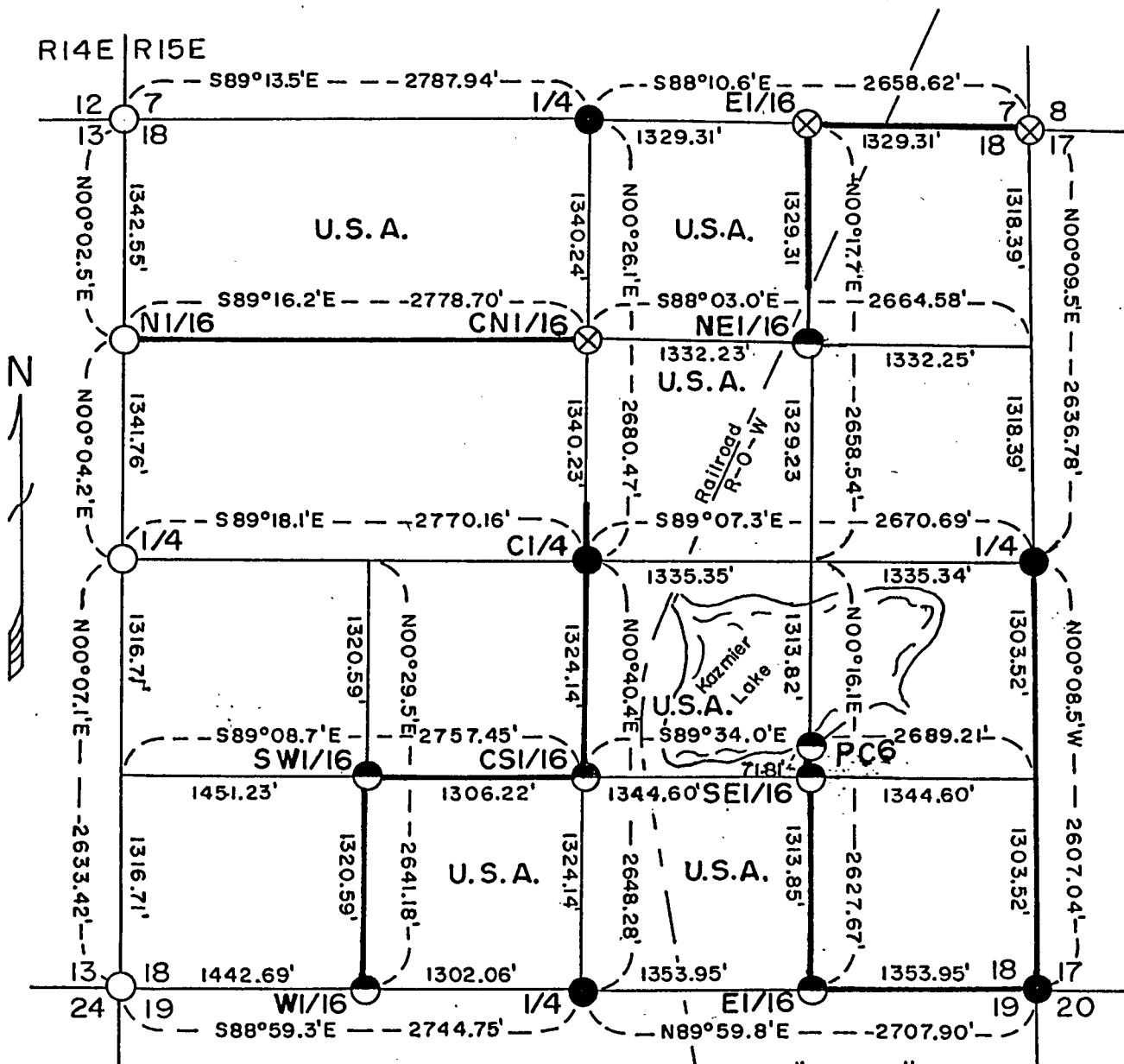
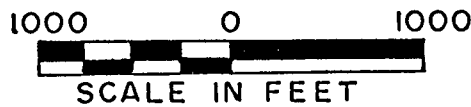


PLAT OF SURVEY U.S. GOVERNMENT LAND

Being the N1/2, NW1/4; Part of the W1/2, NE1/4; Part of the W1/2, SE1/4; and the SE1/4, SW1/4; Section 18 Township 35 North, Range 15 East, Fourth Principal Meridian FOREST COUNTY, WISCONSIN



LEGEND

- Railroad Spike in Road Surface
- ⊗ 3/4" X 24" Iron Rod Below Road Surface
- 2 1/2" Aluminum Monument, 36" Long
- ◐ 1" Aluminum Monument, 36" Long

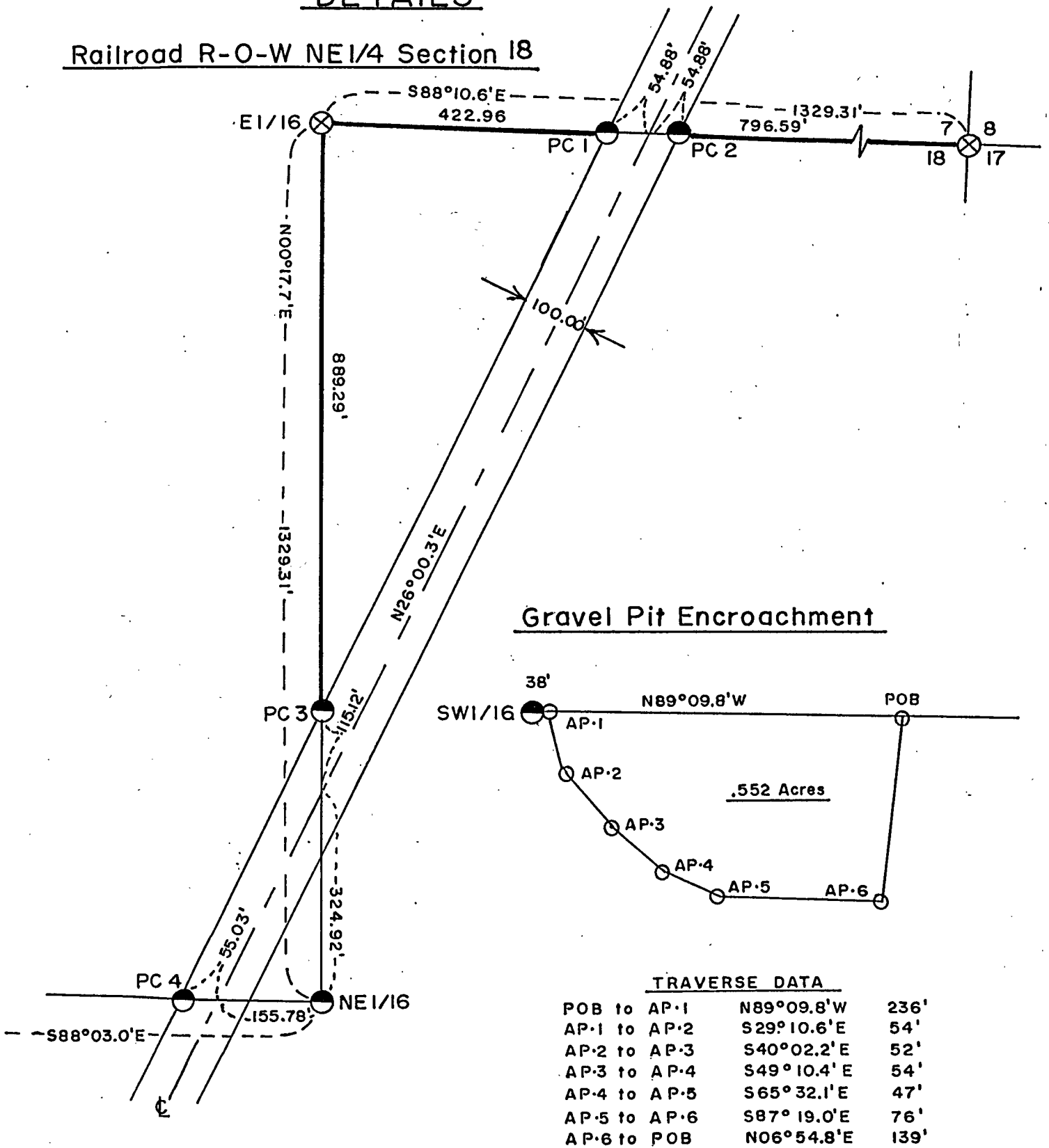
CONVERSION FACTORS:
Feet to Meters - 3.280833
Meters to Feet - 0.304801

— Marked Boundary Lines, U.S. Government Lands

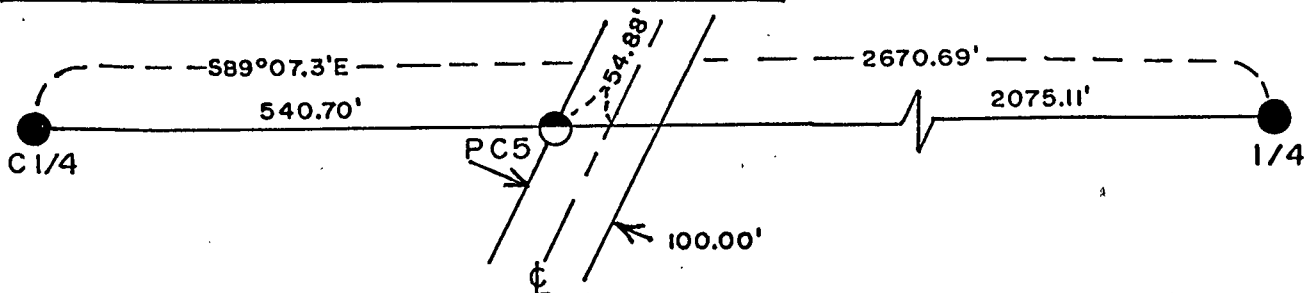
See "DETAIL" Page 2
For Railroad R-O-W

DETAILS

Railroad R-O-W NE 1/4 Section 18



Railroad R-O-W East-West 1/4 Line



Stock No. 26273

Sheet 3 of 8

SURVEY NOTES

This survey was made by Milo E. Stefan, a private land surveyor, RLS #1558, under contract with the U. S. Department of Agriculture, Forest Service, for the purpose of restoring and establishing corners on the perimeter of Section 18, for establishing subdivisional corners within Section 18 and for locating and marking the boundaries of U. S. Government lands on the perimeter and within Section 18, Township 35 North, Range 15 East, Fourth Principal Meridian, Forest County, Wisconsin.

The U. S. Government lands in this section were acquired from 1935 - 1943.

The original government subdivision survey of this township was done by James McBride in 1859. The range line was established by Artemas Curtis in 1857.

The corner positions recovered, restored and established by this survey are marked by the monument described in the map legend. They are also placed within an accuracy of one part in 3000 or better.

The bearings between corner positions are true bearings as determined by a solar observation.

The field notes of this survey and a copy of the plat are on file in the Forest Supervisor's Office at Rhinelander, Wisconsin.

CORNERS RECOVERED AND RESTORED

1. Section Corner to Sections 7, 12, 13 and 18, T35N, R15E.
Corner position restored from Forest Service and Department of Transportation reference monuments. A railroad spike was placed for the corner.

Corner References:

Forest Service Brass Cap (1980)		N89°-18.3'W	91.00 feet
(WC #1) DOT Aluminum Monument (1985)		N52°-51'E	69.68 feet
(WC #2) DOT Aluminum Monument (1985)		S66°-05'E	60.04 feet
(WC #3) DOT Aluminum Monument (1985)		S52°-51'W	73.96 feet
(WC #4) DOT Aluminum Monument (1985)		N66°-05'W	71.22 feet
Steel Sign Post SE of DOT WC #2			.47 feet

2. Section Corner to Sections 7, 8, 17 and 18, T35N, R15E.
Corner position restored at intersection of roads east, west and south. Fence line northerly. Corner marked by a 3/4" x 24" iron rod.

Corner References:

Reference Monument		North	25.00 feet
Basswood	6"	S78°E	96.88 feet
White Birch	5"	S52°W	45.14 feet
Red Pine	14"	N69°W	138.94 feet
Red Pine	14"	N11°W	172.43 feet
Steel Sign Post		NW of R.M.	.65 feet

Stock No. 26273

Sheet 4 of 8

3. Section Corner to Sections 17, 18, 19 and 20, T35N, R15E.
Corner position restored from the remains of the original bearing trees.

Corner References:

Red Pine	6"	S9°W	37.95 feet
Red Pine	8"	S63°W	51.58 feet
Sugar Maple	12"	N12°W	103.01 feet
Sugar Maple	14"	N58°W	96.87 feet
Steel Sign Post		Southwest	1.73 feet

4. Section Corner to Sections 13, 18, 19 and 24, T35N, R15E.
Corner position restored from Forest Service and Department of Transportation reference monuments of 1985. A railroad spike was placed to mark the corner position.

Corner References:

Forest Service Brass Cap (1980)		N50°W	75.00 feet
(WC #2) DOT Aluminum Monument (1985)		S68°-01'W	75.91 feet
(WC #3) DOT Aluminum Monument (1985)		N53°-52'W	91.75 feet
(WC #4) DOT Aluminum Monument (1985)		N68°-01'E	81.37 feet
(WC #5) DOT Aluminum Monument (1985)		S53°-52'E	56.76 feet
Steel Sign Post SW of DOT WC#3			.57 feet

5. Quarter Corner to Sections 7 and 18, T35N, R15E.
Corner position restored from remains of the original bearing trees.

Corner References:

Black Ash	8"	N22°E	17.54 feet
Black Ash	6"	S86°E	24.62 feet
Sugar Maple	8"	S66°W	70.55 feet
Sugar Maple	6"	N32°W	19.79 feet
Steel Sign Post		Northeast	1.3 feet
Iron Pipe		N50°E	12.64 feet

6. Quarter Corner to Sections 17 and 18, T35N, R15E.
Corner position found marked by an iron pipe. This position accepted for many years.

Corner References:

White Ash	4"	N55°E	16.69 feet
Sugar Maple	8"	S65°E	30.77 feet
Sugar Maple	12"	S2°E	18.96 feet
Red Pine	3"	S85°W	15.43 feet
Steel Sign Post		Southeast	1.05 feet

7. Quarter Corner to Sections 18 and 19, T35N, R15E.
Corner position restored by accepting of east Sixteenth and using direction and doubling the distance westerly from Section Corner to the east.

Corner References:

Red Pine	14"	N65°E	61.37 feet
Red Pine	14"	S70°E	8.12 feet
Red Pine	10"	S58°E	28.43 feet
Red Pine	12"	N38°W	10.85 feet
Steel Sign Post		Northeast	1.00 feet

Stock No. 26273

Sheet 5 of 8

8. Quarter Corner to Sections 13 and 18, T35N, R15E.

Corner position restored from Forest Service and Department of Transportation reference monuments of 1985. A railroad spike was placed to mark the corner position.

Corner References:

Forest Service Brass Cap (1980)		N89°-00.3'W	98.00 feet
(WC #1) DOT Aluminum Monument (1985)		N50°-22'E	102.57 feet
(WC #2) DOT Aluminum Monument (1985)		S58°-32'E	88.03 feet
(WC #3) DOT Aluminum Monument (1985)		S50°-22'W	74.51 feet
(WC #4) DOT Aluminum Monument (1985)		N58°-32'W	84.95 feet
Steel Sign Post SE of DOT WC #3			.63 feet

9. North Sixteenth Corner to Sections 13 and 18, T35N, R14-15E.

Corner position found marked by a railroad spike in the surface of State Highway #32. As set by Forest Service March 31, 1986.

Corner References:

Reference Monument		N89°-09.3'W	95.20 feet
Red Pine	8"	N42°E	158.79 feet
Red Pine	12"	N86°E	102.70 feet
Red Pine	10"	S26°W	161.58 feet
Steel Sign Post		Northwest of RM	.50 feet

10. East Sixteenth Corner to Sections 18 and 19, T35N, R15E.

Corner position found marked by an iron pipe of long standing.

Corner References:

White Birch	3"	N88°E	31.59 feet
Sugar Maple	8"	N56°W	53.17 feet
Steel Sign Post		Southwest	.88 feet

11. Center Quarter Corner to Section 18, T35N, R15E.

Corner position found marked by an iron pipe of long standing.

Corner References:

Sugar Maple	6"	N47°E	22.61 feet
Sugar Maple	5"	S61°E	8.85 feet
Steel Sign Post		Southeast	1.20 feet

CORNERS ESTABLISHED1. East Sixteenth Corner to Sections 7 and 18, T35N, R15E.

Corner position established at midpoint and on line between the North Quarter Corner and the Northeast Section Corner to Section 18.

Corner References:

Reference Monument		South	25.00 feet
Sugar Maple	8"	N20°E	45.40 feet
Sugar Maple	8"	S18°W	36.52 feet
Yellow Birch	8"	S8°E	19.12 feet
Steel Sign Post		SE of R.M.	.99 feet

Stock No. 26273

Sheet 6 of 8

2. West Sixteenth Corner to Sections 18 and 19, T35N, R15E.

Corner position established at proportioned distance on line between the Southwest Quarter Corner and the Southwest Section Corner to Section 18.

Corner References:

Sugar Maple	6"	S32°E	36.05 feet
Red Maple	10"	S40°W	19.53 feet
Steel Sign Post		Southeast	.82 feet

3. Center North Sixteenth Corner to Section 18, T35N, R15E.

Corner position established at midpoint and on line between the Center Quarter and North Quarter Corners to Section 18.

Corner References:

Reference Monument		West	25.00 feet
Hemlock	6"	N86°E	31.77 feet
Sugar Maple	6"	N64°W	36.25 feet
Steel Sign Post		Northwest of R.M.	1.00 feet
2" Iron Pipe		N36°E	8.02 feet

4. Center South Sixteenth Corner to Section 18, T35N, R15E.

Corner position established at midpoint and on line between the Center and South Quarter Corners to Section 18.

Corner References:

Red Pine	12"	S56°W	19.15 feet
Red Pine	12"	N22°W	8.55 feet
Steel Sign Post		Southwest	.94 feet
2" Iron Pipe		N52°E	9.5 feet

5. Northeast Sixteenth Corner to Section 18, T35N, R15E.

Corner position established at the intersection of the North and East Sixteenth lines to Section 18.

Corner References:

White Pine	3"	N5°E	45.70 feet
Black Cherry	6"	N10°W	15.61 feet
Steel Sign Post		Southeast	.85 feet

6. Southwest Sixteenth Corner to Section 18, T35N, R15E.

Corner position established at the intersection of the South and West Sixteenth lines to Section 18.

Corner References:

Red Maple	8"	S83°W	42.10 feet
Red Maple	6"	N19°W	32.70 feet
Steel Sign Post		Southeast	.68 feet

7. Southeast Sixteenth Corner to Section 18, T35N, R15E.

Corner position established at the intersection of the South and East Sixteenth lines to Section 18.

Corner References:

Sugar Maple	6"	S48°E	16.13 feet
Sugar Maple	6"	N8°W	16.18 feet
Steel Sign Post		Northwest	.78 feet

Stock No. 26273

Sheet 7 of 8

8. Property Corner #1
 Corner position established at the intersection of the section line with the west edge of a 100 foot railroad right-of-way.
- Corner References:
- | | | | |
|-----------------|----|-----------|------------|
| Sugar Maple | 4" | S88°W | 81.65 feet |
| Sugar Maple | 6" | N33°W | 47.12 feet |
| Steel Sign Post | | Southwest | 1.00 feet |
9. Property Corner #2
 Corner position established at the intersection of the section line with the east edge of a 100 foot railroad right-of-way.
- Corner References:
- | | | | |
|-----------------|-----|-----------|------------|
| Red Pine | 12" | N60°E | 63.59 feet |
| Basswood | 8" | S22°E | 12.63 feet |
| Steel Sign Post | | Southeast | 1.12 feet |
10. Property Corner #3
 Corner position established at the intersection of the east sixteenth line with the west edge of a 100 foot railroad right-of-way.
- Corner References:
- | | | | |
|-----------------|----|-------|------------|
| Red Maple | 6" | N32°E | 16.04 feet |
| Red Maple | 4" | N9°W | 8.67 feet |
| Steel Sign Post | | North | .77 feet |
11. Property Corner #4
 Corner position established at the intersection of the north sixteenth line and west edge of a 100 foot railroad right-of-way.
- Corner References:
- | | | | |
|-----------------|----|-------|------------|
| White Pine | 5" | N83°E | 11.03 feet |
| Red Pine | 6" | N56°W | 32.80 feet |
| Steel Sign Post | | North | .81 feet |
12. Property Corner #5
 Corner position established at the intersection of the east-west quarter line with the west edge of a 100 foot railroad right-of-way.
- Corner References:
- | | | | |
|-----------------|-----|-----------|------------|
| White Pine | 28" | N36°W | 8.91 feet |
| Red Maple | 2" | S59°W | 13.39 feet |
| Steel Sign Post | | Southwest | .80 feet |
13. Property Corner #6
 Corner position established at the intersection of the east sixteenth line and south shore of Kazmier Lake.
- Corner References:
- | | | | |
|-----------------|----|-----------|------------|
| Red Maple | 6" | S73°E | 15.00 feet |
| Red Maple | 5" | S85°W | 25.93 feet |
| Steel Sign Post | | Southwest | .85 feet |

Stock No. 26273

SURVEYORS AFFIDAVIT

State of Wisconsin) SS
County of Forest)

I, Milo E. Stefan, Registered Land Surveyor in the State of Wisconsin, hereby certify that I have surveyed and subdivided Section 18, township 35 north, range 15 east, Fourth Principal Meridian, State of Wisconsin.

The plat map and the notes herewith are a correct representation of the land surveyed and divided. I have surveyed and subdivided said section in accordance with the rules for the survey of the public lands and with the statutes of the State of Wisconsin.



Milo E. Stefan
Registered Land Surveyor, State of Wisconsin
Certificate No. 1558

Date of Survey: 1989

Plat ready for filing:

Dale S. Hage
District Ranger

