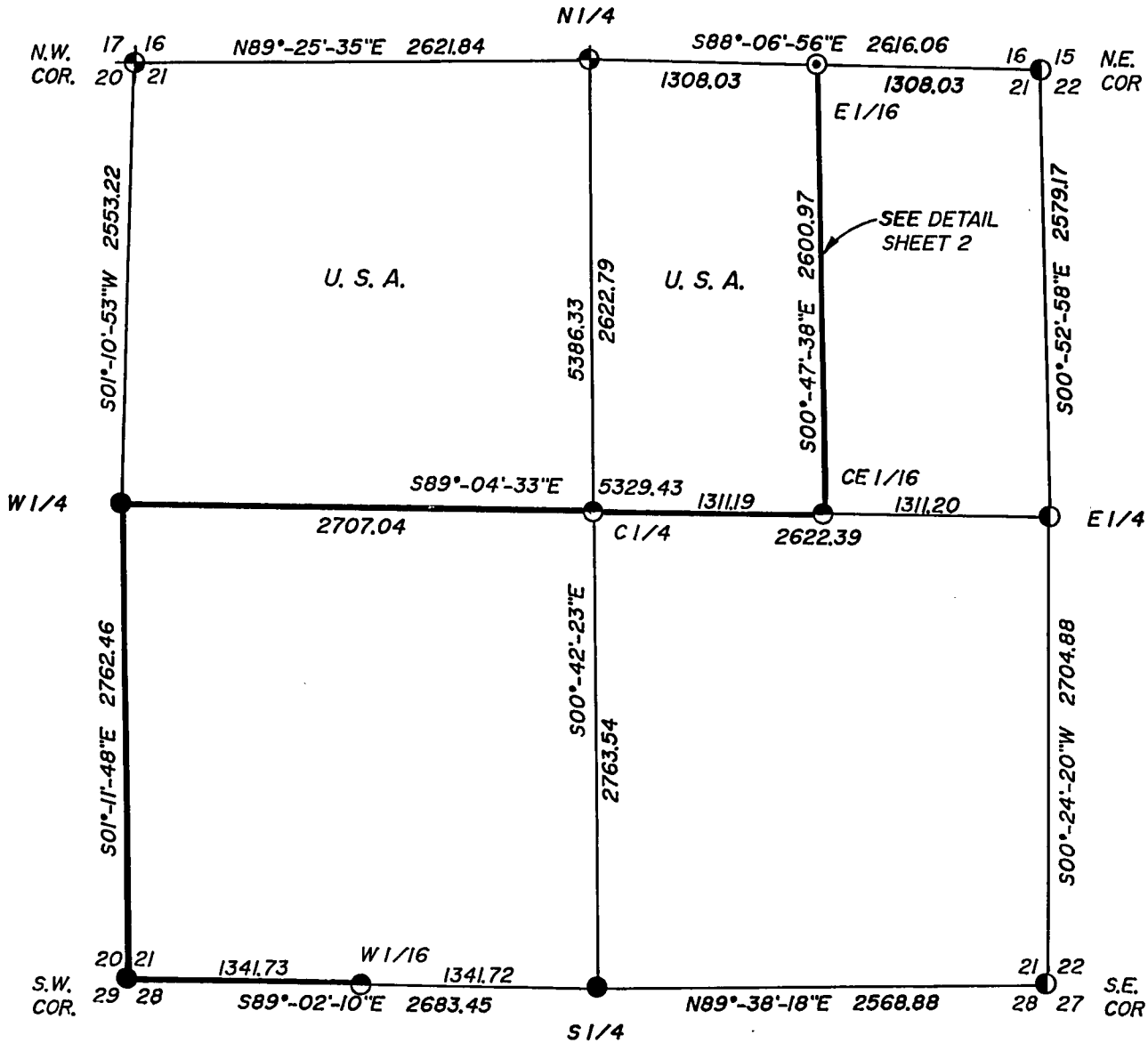
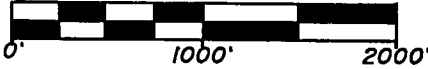


PLAT OF SURVEY U.S. GOVERNMENT LANDS

BEING THE CORNERS FOR THE NW 1/4, THE W 1/2 OF THE NE 1/4,
 AND THE SW 1/4 OF SECTION 21, TOWNSHIP 35 NORTH, RANGE 15 EAST,
 FOURTH PRINCIPAL MERIDIAN, TOWN OF BLACKWELL

FOREST COUNTY, WISCONSIN

SCALE: 1" = 1000'



LEGEND

- = 2" ALUMINUM MONUMENT, FOUND IN PLACE.
- = 2-1/2" ALUMINUM MONUMENT, FOUND IN PLACE.
- = 1" ALUMINUM MONUMENT, FOUND IN PLACE.
- = RAILROAD SPIKE, FOUND IN PLACE.
- = 1" X 36" ALUMINUM MONUMENT, SET THIS SURVEY

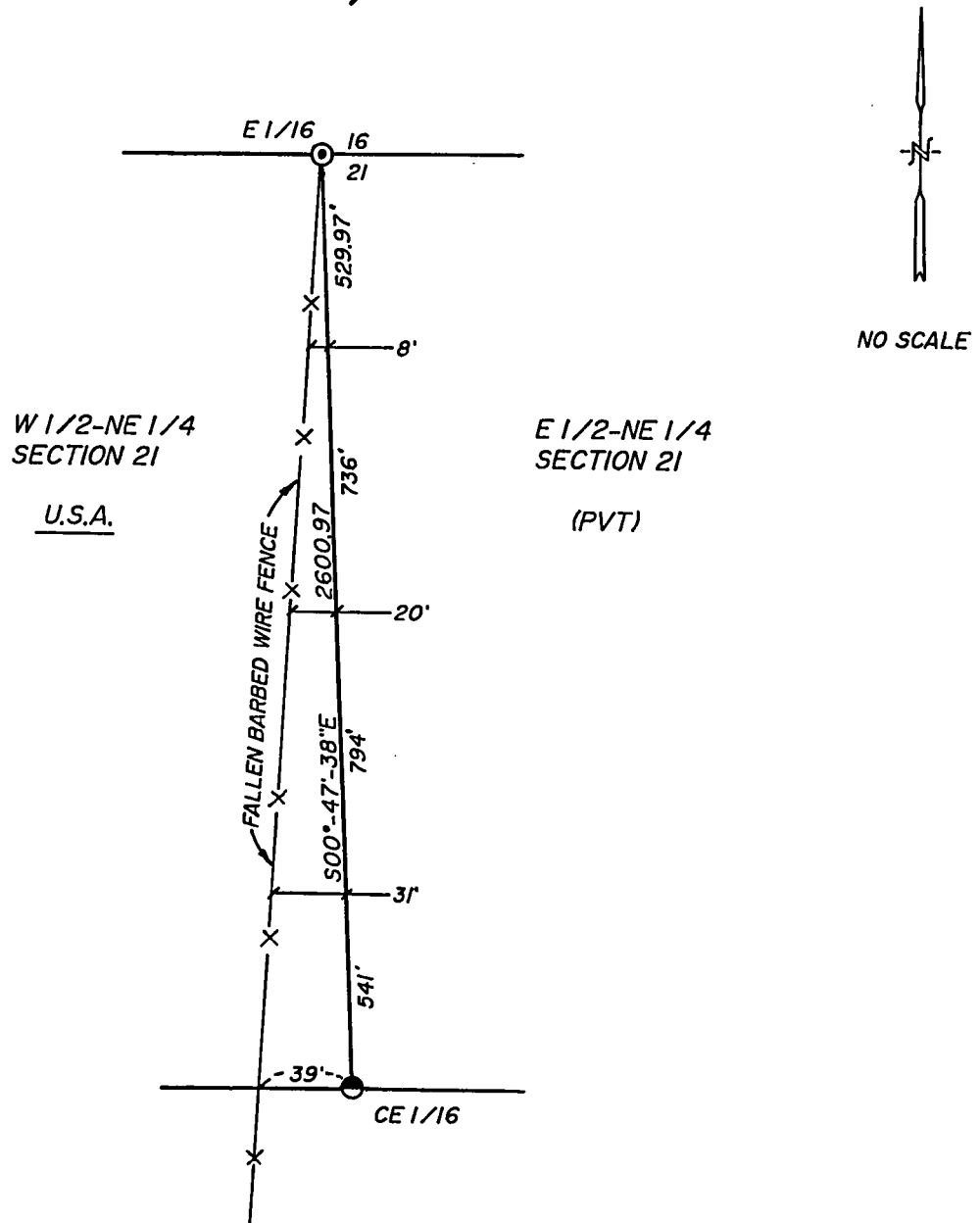
SUPPLEMENTAL PLAT OF SURVEY

SHEET 2 OF 5

APPARENT ENCROACHMENTS UPON U.S. GOVERNMENT LANDS

IN THE W 1/2-NE 1/4, SECTION 21, T35N, R15E,
4TH PRINCIPAL MERIDIAN, TOWN OF BLACKWELL

FOREST COUNTY, WISCONSIN



(SEE "PLAT OF SURVEY - U.S. GOVERNMENT LANDS" IN SECTION 21, T35N, R15E,
FOR CORNER MONUMENTATION AND BOUNDARY INFORMATION) SHEET 1 OF 5



I HEREBY CERTIFY THAT I HAVE SURVEYED
AND MAPPED THE LINES SHOWN HEREON
AND THAT THIS SURVEY IS CORRECT TO THE
BEST OF MY KNOWLEDGE AND BELIEF.

John R. Garske
 JOHN R. GARSKE
 COLEMAN ENGINEERING COMPANY
 IRON MOUNTAIN, MICHIGAN 49801

SECTION 21, T35N-R15E
SURVEY NOTES

This survey was made by Coleman Engineering Company for the U.S. Department of Agriculture-Forest Service under Contract No. 53-56A-2-788 for the purpose of restoring and establishing corners on the perimeter of Section 21 for establishing subdivisional corners within Section 21, and for locating and marking the boundaries of U.S. Government lands along the perimeter and within Section 21, Township 35 North, Range 15 East, Fourth Principal Meridian, Forest County, State of Wisconsin.

The U.S. Government acquired ownership within Section 21 in 1935.

The original township line and subdivision surveys of T35N-R15E were completed in 1858 and 1859, respectively.

The corner positions recovered, restored and established by this survey are marked by the monument described in the map legend.

The corner positions established were located to a minimum accuracy of 1 part in 5000.

The bearings between corner positions are true bearings as determined by solar (hour-angle) observations.

The field notes of the survey and a copy of this plat are on file in the Forest Supervisor's office in Rhinelander, Wisconsin.

CORNERS RECOVERED OR RESTORED

1. Section corner common to Sections 16, 17, 20 and 21.
Corner recovered as set by Milo Stefan, RLS 1558; certificate on file in Forest County - Document No. 138188.
2. Quarter corner common to Sections 16 and 21.
Corner recovered as set by Milo Stefan, RLS 1558; certificate on file in Forest County - Document No. 124186.
3. East one-sixteenth corner to Sections 16 and 21.
Corner recovered as set by Alan Harrison, RLS 1651, in 1991. Found a 1" x 36" aluminum capped monument.

Established corner references:

Spruce	11"	S28°W	21.63 feet
Red Pine	10"	N48°W	24.60 feet
Steel Sign Post		North	1.38 feet

4. Section corner common to Sections 15, 16, 21 and 22.
Corner position recovered as noted in certificate by Alan Harrison, RLS 1651, on file in Forest County - Document No. 144429.
5. Quarter corner common to Sections 21 and 22.
Corner recovered as set by Alan Harrison, RLS 1651; certificate on file in Forest County - Document No. 144428.
6. Section corner common to Sections 21, 22, 27 and 28.
Corner recovered as set by Alan Harrison, RLS 1651; certificate on file in Forest County - Document No. 144427.

7. Quarter corner common to Sections 21 and 28.
 Corner recovered as set by Alan Harrison, RLS 1651; certificate on file in Forest County - Document No. 146968.
8. Section corner common to Sections 20, 21, 28 and 28.
 Corner monumented in 1981 by Milo Stefan, RLS 1558. Recovered in 1993 by John R. Garske, RLS 1685.

Established corner references:

Basswood	11"	S85°E	32.22 feet
Sugar	14"	S45°E	54.14 feet
Sugar	14"	N84°W	29.86 feet
Sugar	16"	N23°W	25.70 feet
Steel Sign Post		East	1.14 feet

9. Quarter corner common to Sections 20 and 21.
 Corner position monumented by Milo Stefan, RLS 1558, in 1981. Recovered in 1993 by John R. Garske, RLS 1685.

Established corner references:

Sugar	10"	N48°E	13.03 feet
Red Pine	13"	S69°W	68.80 feet
Sugar	10"	N47°W	23.66 feet
Steel Sign Post		South	1.05 feet

CORNERS ESTABLISHED

1. West one-sixteenth (1/16) corner to Sections 21 and 28.
 Established corner position at the mid-point and on line between the south quarter corner and southwest corner of Section 21.

Established corner references:

Maple	10"	N81°E	4.31 feet
Maple	12"	S25°W	11.47 feet
Steel Sign Post		Southwest	2.30 feet

2. Center quarter corner of Section 21.
 Corner established at the intersection of the North-South and East-West quarter lines of Section 21.

Established corner references:

Red Pine	8"	N67°E	36.56 feet
Spruce	12"	N13°W	36.24 feet
Steel Sign Post		West	1.46 feet

3. Center east one-sixteenth corner of Section 21.
 Corner established at the mid-point and on line between the center of Section 21 and the east one-quarter corner of Section 21.

Established corner references:

Sugar	8"	N55°W	9.80 feet
Basswood	10"	N13°W	47.56 feet
Steel Sign Post		Northwest	2.05 feet

SURVEYOR'S AFFIDAVIT

State of Wisconsin)
County of Forest) S.S.

I, John R. Garske, Land Surveyor for Coleman Engineering Company and a registered surveyor in the State of Wisconsin, hereby certify that this survey of Section 21, Township 35 North, Range 15 East, Fourth Principal Meridian, State of Wisconsin, was performed under my direct responsible supervision.

The plat map and the notes herewith are a correct representation of the land surveyed and divided. I have surveyed and subdivided said section in accordance with the rules for survey of the public lands and with the statutes of the State of Wisconsin.



John R. Garske
John R. Garske
Coleman Engineering Company
R.L.S., State of Wisconsin
License No. S-1685

Plat ready for filing:

Sue Vap
District Ranger

Date of Survey: 1993

