

Stock No. 26273

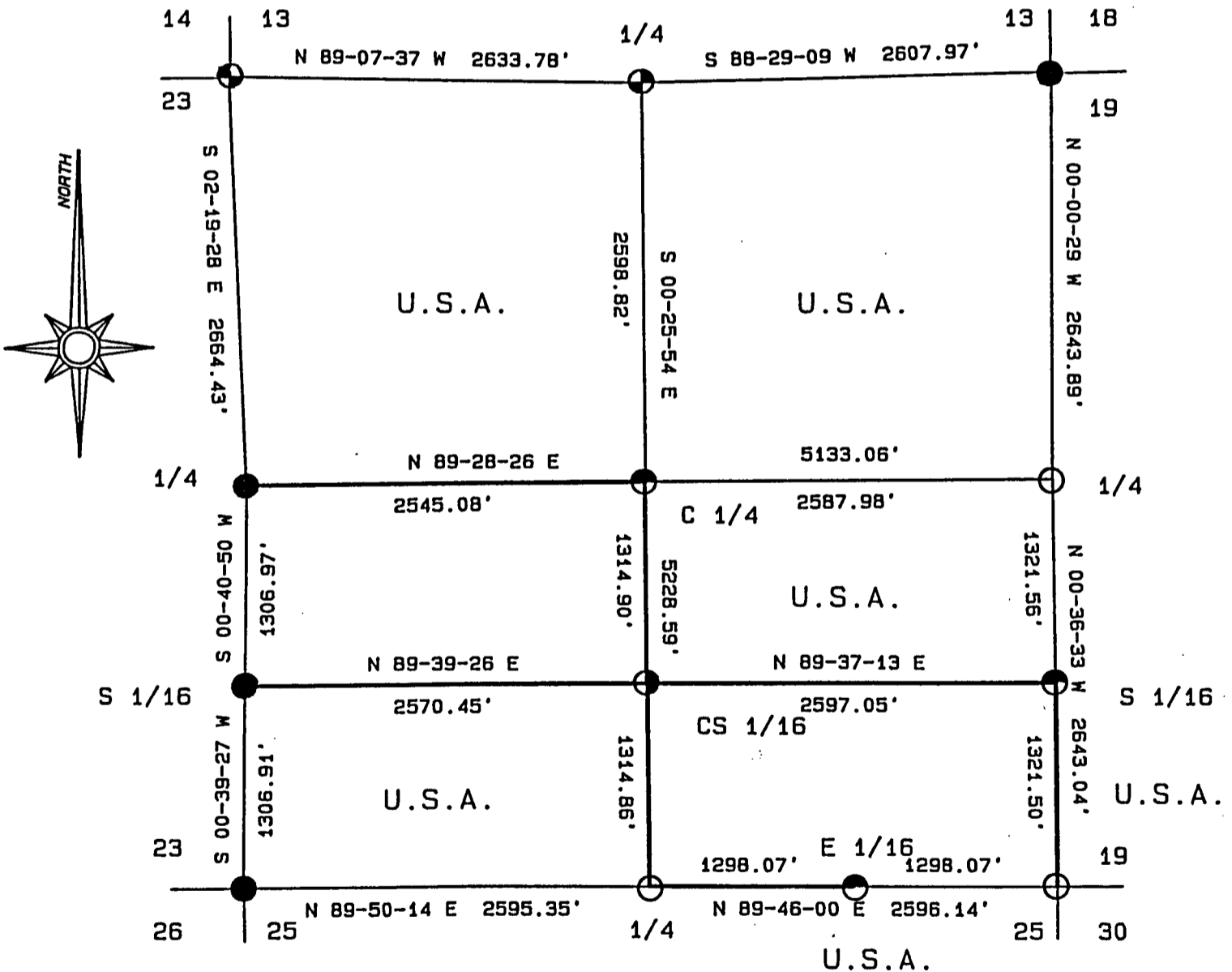
PLAT OF SURVEY U.S. GOVERNMENT LANDS

BEING THE NE 1/4; N 1/2, SE 1/4; S 1/2, SW 1/4; and NW 1/4;
SECTION 24; TOWNSHIP 35 NORTH; RANGE 15 EAST; FOURTH PRINCIPAL MERIDIAN;
FOREST COUNTY; WISCONSIN.

1000 0 1000 2000 3000



GRAPHIC SCALE - 1" = 1000'



LEGEND

- 2" BRASS CAPPED MONUMENT, FOUND IN PLACE.
- 2 1/2" ALUMINUM MONUMENT, FOUND IN PLACE.
- ⊕ 2 1/2" X 36" ALUMINUM MONUMENT, SET THIS SURVEY.
- ⊙ 2 1/2" X 60" ALUMINUM MONUMENT, SET THIS SURVEY.
- ⊖ 1 1/2" X 36" ALUMINUM MONUMENT, SET THIS SURVEY.
- MARKED BOUNDARY LINE OF U.S. GOVERNMENT LANDS.

Stock No. 26273

Sheet 2 of 4

SURVEY NOTES

This survey was made by the U. S. Department of Agriculture, Forest Service, for the purpose of restoring and establishing corners on the perimeter of Section 24, for establishing subdivisional corners within Section 24, and for locating and marking the boundaries of U. S. Government land on their perimeter and within Section 24, Township 35 North, Range 15 East, Fourth Principal Meridian, Forest County, Wisconsin.

The U. S. Government lands in this section were acquired in 1935 and 1938.

The original Government subdivision survey of this township was made in 1859.

In 1914, N. Smith ran a survey in Section 24.

In 1983, BLM did a dependent survey in Section 23.

The corner positions recovered, restored, and established by this survey are marked by the monument described in the map legend.

The corner positions established were located to an accuracy of one part in 3000.

The bearings between corner positions are true bearings as determined by solar observations.

The field notes of this survey and a copy of this plat are on file in the Forest Supervisor's Office at Rhinelander, Wisconsin.

CORNERS RECOVERED AND RESTORED

1. Section Corner to Sections 13-14-23-24, T.35N., R.15E.
Corner position found marked by a 2 $\frac{1}{2}$ " x 36" aluminum monument as set in previous survey of Section 14. Certificate on file.
2. Section Corner to Sections 13-18-19-24, T.35N., R.15-16E.
Corner position found marked by a 2" x 36" iron pipe with brass cap stamped for corner as set by Jean Resvick (RLS). Certificate on file.
3. Section Corner to Sections 19-24-25-30, T.35N., R.15-16E.
Corner position found marked by a 2 $\frac{1}{2}$ " x 60" aluminum monument as set by Milo Stefan (RLS) in 1984. Certificate on file.
4. Section Corner to Sections 23-24-25-26, T.35N., R.15E.
Corner position found marked by a 2" x 30" iron pipe 6" below road surface.

Corner References:

Witness Corner		North	33.00 feet
Witness Corner		South	33.00 feet
Sugar	12"	S.47°W.	44.83 feet
Sugar	12"	N.07°W.	43.82 feet
Steel Sign Post		South	33.00 feet

Stock No. 26273

Sheet 3 of 4

5. Quarter Corner to Sections 13-24, T.35N., R.15E.

Corner position found marked by a 2" iron pipe in a mound of stone.
Corner References:

Sugar	20"	N.53°E.	31.92 feet
White Ash	10"	S.27°W.	17.61 feet
Sugar	6"	N.15°W.	7.05 feet
Steel Sign Post		Southeast	1.20 feet

6. Quarter Corner to Sections 19-24, T.35N., R.15-16E.

Corner position found marked by a 2½" x 30" aluminum monument as set by Milo Stefan (RLS). Certificate on file.

7. Quarter Corner to Sections 24-25, T.35N., R.15E.

Corner position found marked by a 2½" x 30" aluminum monument stamped for corner as set by Milo Stefan (RLS). Certificate on file.

8. Quarter Corner to Sections 23-24, T.35N., R.15E.

Corner position found marked by a 2" x 36" iron pipe with brass cap stamped for corner as set by Jean Resvick (RLS).
Corner References:

Spruce	12"	N.66°E.	44.07 feet
Spruce	16"	S.51°E.	47.15 feet
Spruce	9"	N.61°W.	36.96 feet
Steel Sign Post		Northwest	0.50 feet

9. South Sixteenth Corner to Sections 23-24.

Corner position found marked by a 2" x 36" iron pipe with brass cap stamped for corner as set by Jean Resvick (RLS).
Corner References:

Maple	7"	N.62°E.	2.31 feet
Maple	5"	N.74°W.	7.95 feet
Steel Sign Post		Southeast	0.50 feet

CORNERS ESTABLISHED1. Center Quarter Corner to Section 24.

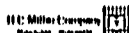
Corner position established at the intersection of the one-quarter lines of Section 24.
Corner References:

Cedar	6"	S.78°E.	18.92 feet
Cedar	6"	S.22°W.	15.13 feet
Sugar	6"	N.03°W.	31.60 feet
Steel Sign Post		Northeast	0.68 feet

2. South Sixteenth Corner to Sections 24-19.

Corner position established midpoint and on line between the east quarter and southeast corner of Section 24.
Corner References:

Sugar	5"	S.71°W.	42.75 feet
Basswood	5"	N.27°W.	27.62 feet
Steel Sign Post		Northeast	0.60 feet



Stock No. 26273

3. East One-Sixteenth Corner to Sections 24-25.

Corner position established midpoint and on line between the south quarter and the southeast corner of Section 24.

Corner References:

Spruce	10"	S.51°W.	10.32 feet
Spruce	7"	West	18.35 feet
Balsam	8"	N.10°W.	19.05 feet
Steel Sign Post		Southwest	1.14 feet

4. Center South One-Sixteenth to Section 24.

Corner position established midpoint and on line between the center quarter corner and the south quarter corner of Section 24.

Corner References:

Tamarack	9"	S.69°E.	88.45 feet
Tamarack	10"	S.26°E.	74.49 feet
Cedar	12"	S.65°W.	21.48 feet
Steel Sign Post		Northeast	0.62 feet

SURVEYOR'S AFFIDAVIT

State of Wisconsin }
County of Forest } SS

I, Alan D. Harrison, Land Surveyor, USDA, Forest Service, and a registered surveyor in the State of Wisconsin, hereby certify that I have surveyed and subdivided Section 24, Township 35 North, Range 15 East, Fourth Principal Meridian, State of Wisconsin.

The plat map and the notes herewith are a correct representation of the land surveyed and divided. I have surveyed and subdivided said section in accordance with the rules for survey of the public lands and with the statutes of the State of Wisconsin.



Alan D. Harrison
Land Surveyor, USDA, Forest Service
R.L.S., State of Wisconsin
Certificate S-1651

Plat ready for filing:

Dale B. Staeger
District Ranger

Date of Survey: 1987

