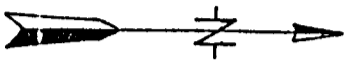
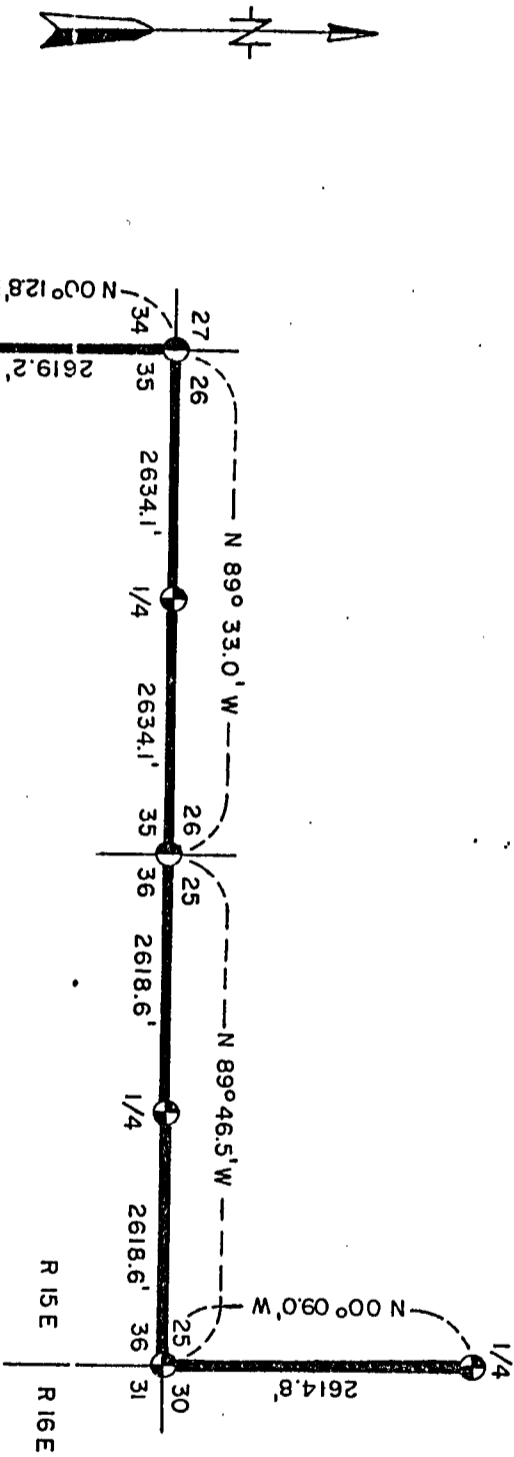


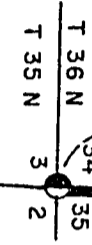
CERTIFIED LAND CORNER RESTORATION AND ESTABLISHMENT

Being the North and West Sides of Section 35, Township 36 North, Range 15 East, and the South and East Sides of Section 25, Township 36 North, Range 15-16 East



LEGEND

- 2" Aluminum Monument - 36" Long.
- 2" Galvanized Iron Pipe With Brass Cap, Filled With Concrete - 36" Long.



Conversion Factor:

Feet to Meters - 0.304801

Meters to Feet - 3.280833

Stock No. 26273

Sheet 2 of 4.

SURVEY NOTES

This survey was made by the U. S. Department of Agriculture, Forest Service, for the purpose of restoring and establishing corners on the west and north sides of Section 35 and the south and east sides of Section 25 and for locating and marking the boundaries of U. S. Government land in Township 36 North, Range 15 East, Fourth Principal Meridian, Forest County, Wisconsin.

The U. S. Government lands in these sections were acquired in 1935 and 1936.

The original Government subdivision survey of this township was made in 1858 and 1859.

The corner positions recovered, restored, and established by this survey are marked by the monument described in the map legend.

The corner positions established were located to an accuracy of one part in 3000.

The bearings between corner positions are true bearings as determined by solar observations.

The field notes of this survey and a copy of this plat are on file in the Forest Supervisor's Office at Rhinelander, Wisconsin.

CORNERS RECOVERED AND RESTORED1. Section Corner to Sections 25, 30, 31, and 36, T.36N., R.15-16E.

Corner position recovered from original Elm stump and supported by two stump holes. Also found large chopped out face on 20"-24" Hemlock with location poster.

Corner References:

Sugar	9"	N.12°E.	17.58 feet
Hemlock	16"	S.35°E.	28.31 feet
Hemlock	12"	S.78°W.	58.72 feet
Sugar	6"	N.74°W.	34.74 feet
Steel Sign Post		Southwest	2.20 feet

2. Section Corner to Sections 2, 3, 34, and 35, T.35-36N., R.15E.

Corner position found marked by 2" x 36" galvanized iron pipe filled with concrete, with brass cap. Certificate filed with the Register of Deeds, Document No. 118083.

Corner References:

Maple	6"	N.23°E.	11.54 feet
Maple	8"	S.8°E.	6.89 feet
Yellow Birch	10"	S.58°W.	13.28 feet
Basswood	14"	N.22°W.	30.38 feet

3. Section Corner to Sections 25, 26, 35, and 36, T.36N., R.15E.

Corner position found marked by a 2" x 36" galvanized iron pipe filled with concrete, with a brass cap. Filed with the Register of Deeds, Document No. 118082.

Corner References:

Maple	8"	N.65°E.	17.67 feet
Basswood	15"	S.20°E.	35.95 feet
Basswood	10"	S.63°W.	19.49 feet
Maple	14"	N.17°W.	22.54 feet

Stock No. 26273

Sheet 3 of 4

4. Section Corner to Sections 26, 27, 34, and 35, T.36N., R.15E.
Corner position found marked by a 2" x 36" galvanized iron pipe filled with concrete, with a brass cap. Filed with the Register of Deeds, Document No. 118081.

Corner References:

Yellow Birch	10"	East	25.81 feet
Maple	7"	S.13°E.	21.92 feet
Double			
Yellow Birch	9"	S.40°W.	20.46 feet
Maple	6"	N.48°W.	9.44 feet
Steel Sign Post		South	0.50 feet

5. Quarter Corner to Sections 25 and 30, T.36N., R.15-16E.

Corner position found marked by a fallen post and post hole, remains of original Hemlock bearing tree, and a location poster by Robert Baker of the CCCs.

Corner References:

Sugar Maple	8"	N.4°E.	32.66 feet
Hemlock	18"	S.71°E.	53.35 feet
Sugar Maple	12"	S.68°W.	9.41 feet
Steel Sign Post		North	23.00 feet

6. Quarter Corner to Sections 25 and 36, T.36N., R.15E.

Corner position was restored midpoint and on line between section corners.

Corner References:

Sugar Maple	6"	N.48°E.	32.21 feet
Hemlock	12"	S.23°E.	62.11 feet
Hemlock	18"	N.2°W.	35.55 feet
Steel Sign Post		East	2.00 feet

7. Quarter Corner to Sections 26 and 35, T.36N., R.15E.

Corner position restored midpoint and on line between the section corners.

Corner References:

Sugar Maple	11"	N.20°E.	28.93 feet
Yellow Birch	10"	N.47°W.	21.25 feet
Steel Sign Post		Northeast	0.50 feet

8. Quarter Corner to Sections 34 and 35, T.36N., R.15E.

Corner position restored from original bearing tree stump and stump hole; also, beaver blazes 55 to 60 years old.

Corner References:

Yellow Birch	6"	N.34°E.	37.66 feet
Sugar Maple	8"	S.65°E.	33.39 feet
Sugar Maple	5"	S.31°W.	23.70 feet
Steel Sign Post		North	3.00 feet

Stock No. 26273

Sheet 4 of 4

SURVEYOR'S AFFIDAVIT

State of Wisconsin]
 County of Forest] SS

I, Milo E. Stefan, Cadastral Surveyor, U. S. Forest Service and a registered surveyor in the State of Wisconsin, hereby certify that I have surveyed and restored the corners and boundaries on the west and north sides of Section 35 and the south and east sides of Section 25, Township 36 North, Range 15 East, Fourth Principal Meridian, State of Wisconsin.

The plat map and the notes herewith are a correct representation of the land surveyed and divided. I have surveyed and subdivided said section in accordance with the rules for survey of the public lands and with the statutes of the State of Wisconsin.

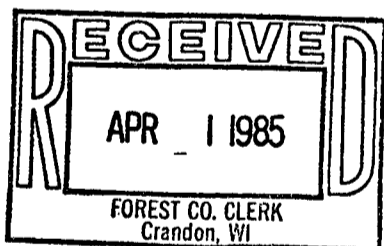


Date of Survey:

Milo E. Stefan
 Cadastral Surveyor, U. S. Forest Service
 R. L. S., State of Wisconsin
 Certificate S-1558

Plat Ready For Filing

Dale B. Stacey
 District Ranger



Dora C. James
 Forest Co. Clerk