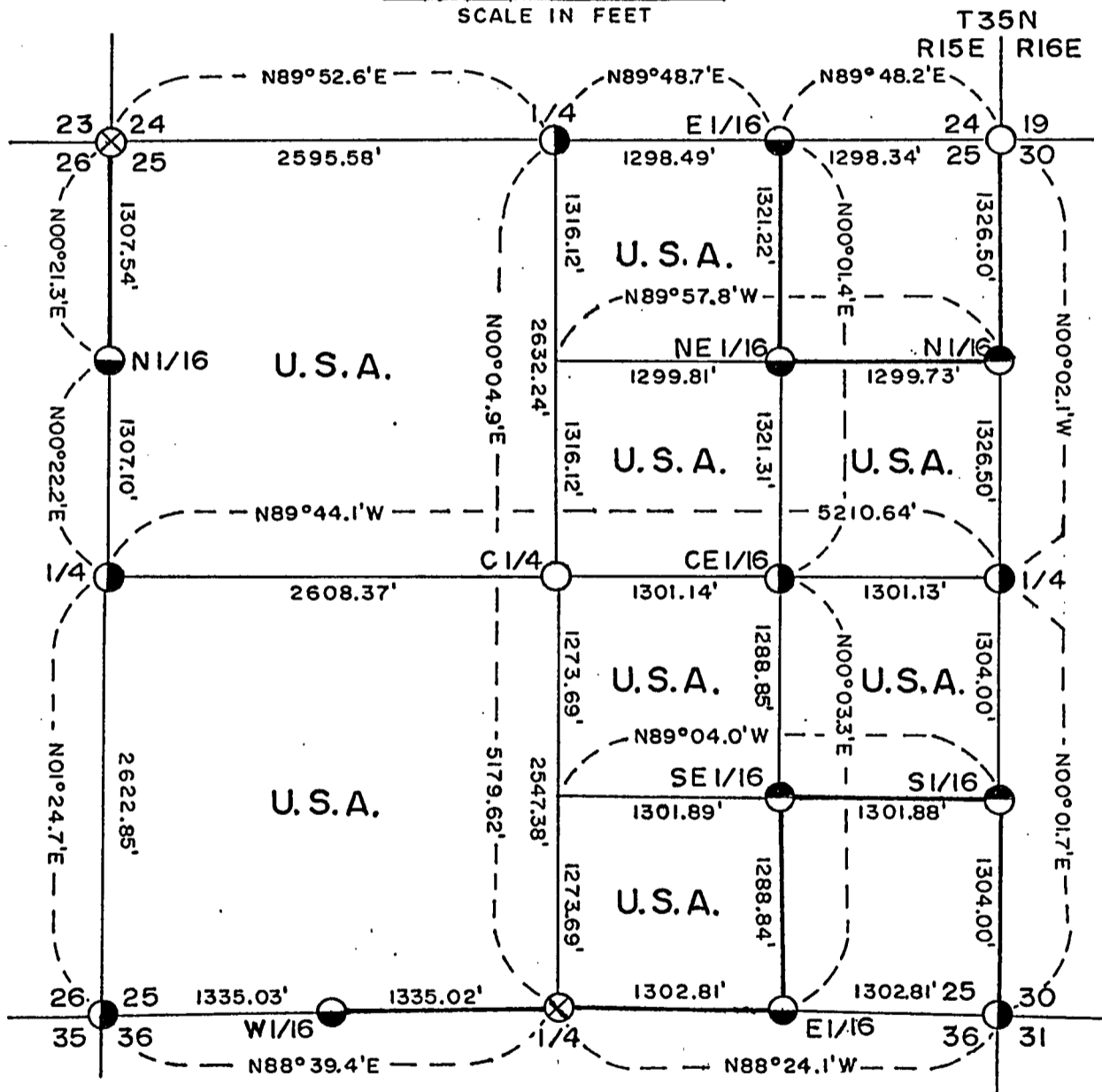


PLAT OF SURVEY

U. S. GOVERNMENT LANDS

Being the W1/2; W1/2, NE1/4; SE1/4, NE1/4; W1/2, SE1/4; and NE1/4, SE1/4 Section 25
 Township 35 North, Range 15 East, Fourth Principal Meridian
 FOREST COUNTY, WISCONSIN



LEGEND

- 2 1/2" X 60" Aluminum Monument
- ◐ 2 1/2" X 36" Aluminum Monument
- ◑ 1" X 60" Aluminum Monument
- ◒ 1" X 36" Aluminum Monument
- ⊗ 2" X 30" Iron Pipe Buried In Road

Conversion Factors:
 Feet to Meters — 3.280833
 Meters to Feet — 0.304801

— Marked Boundary Lines, U. S. Government Lands

Stock No. 26273

Sheet 2 of 5

SURVEY NOTES

This survey was made by Milo E. Stefan, a Registered Land Surveyor in the State of Wisconsin, under contract to the U. S. Department of Agriculture, Forest Service, for the purpose of restoring and establishing corners on the perimeter of Section 25, for establishing the boundaries of U. S. Government land on the perimeter and within Section 25, Township 35 North, Range 15 East, Fourth Principal Meridian, Forest County, Wisconsin.

The U. S. Government Lands in this Section were acquired in 1935 and 1936.

The Range Line being established by Artemas Curtis in 1859. The original Government subdivision survey of this township was made in 1859 by James McBride.

The corner positions recovered, restored and established by this survey are marked by the monument described in the map legend.

The corner positions established were located to an accuracy of one part in 3000.

The bearings between corner positions are true bearings as determined by solar observations. This survey is orientated with the solar observation by the Forest Service on the the south side of Section 36. The field notes of this survey and a copy of this plat are on file in the Forest Supervisor's Office at Rhinelander, Wisconsin.

CORNERS RECOVERED AND RESTORED

1. Section Corner to Sections 23, 24, 25 and 26, T.35N., R.15E.
Corner monumented by Jean F. Resvick, R.L.S., in 1965. Corner reworked by Al Harrison in 1986. Certificate on file in Forest County, Document No. 131257.
2. Section Corner common to Sections 19, 24, 25, and 30, T.35N., R.15 - 16E.
Corner monumented by Milo E. Stefan, R.L.S. Certificate on file in Forest County, Document No. 127708.
3. Section Corner to Sections 25, 26, 35 and 36, T.35N., R15E.
We restored this corner at the post hole, supported by three of the four bearing tree remains from the original survey.
Corner references:

Sugar Maple	10"	S81°E	23.68 Feet
Sugar Maple	14"	S24°W	44.04 Feet
Sugar Maple	10"	N77°W	10.93 Feet
Sugar Maple	14"	N15°W	13.73 Feet
Steel Sign Post		Northeast	1.65 Feet
4. Section Corner to Sections 25, 30, 31 and 36, T.35N., R.15 - 16E.
Corner monumented by William B. Cochrane, R.L.S. Certificate on file in Forest County, Document No. 118067.
5. Quarter Corner to Sections 24 and 25, T.35N., R.15E.
Corner monumented by Milo E. Stefan, R.L.S. Certificate on file in Forest County, Document No. 129838.

Stock No. 26273

Sheet 3 of 5

6. Quarter Corner to Sections 25 and 26, T.35N., R.15E.
Corner monumented by Al Harrison, R.L.S. Certificate filed in Forest County, Document No. 129849.
7. Quarter Corner to Sections 25 and 30, T.35N., R.15 - 16E.
Corner monumented by Al Harrison, R.L.S. Certificate on file in Forest County, Document No. 129873.
8. Quarter Corner to Sections 25 and 36, T.35N., R.15E.
Corner monumented by Jean F. Resvick, R.L.S. Certificate on file in Forest County, Document No. 90972.
9. East Sixteenth Corner to Sections 25 and 26, T.35N., R.15E.
Corner monumented by Al Harrison in the section subdivision of Section 24.
Corner references:
- | | | | |
|-----------------|-----|-----------|------------|
| White Spruce | 10" | S51°W | 10.32 Feet |
| White Spruce | 7" | West | 18.35 Feet |
| Balsam Fir | 8" | N10°W | 19.05 Feet |
| Steel Sign Post | | Southwest | 1.14 Feet |
10. North Sixteenth Corner to Sections 25 and 26, T.35N., R.15E.
Corner monumented by Al Harrison and placed at midpoint and on line between the Northwest Section Corner and the West Quarter Corner to Section 25.
Corner references:
- | | | | |
|-----------------|----|-----------|------------|
| Sugar Maple | 6" | N49°E | 37.22 Feet |
| Sugar Maple | 4" | S26°W | 23.78 Feet |
| Sugar Maple | 6" | N09°W | 29.44 Feet |
| Steel Sign Post | | Southeast | 1.32 Feet |

CORNERS ESTABLISHED

1. Northeast Sixteenth Corner to Section 25, T.35N., R.15E.
We established this corner at the intersection of the North and East Sixteenth Lines to Section 25.
Corner references:
- | | | | |
|-----------------|----|-----------|------------|
| Sugar Maple | 7" | S38°E | 42.47 Feet |
| Sugar Maple | 6" | S11°W | 36.98 Feet |
| Sugar Maple | 5" | N47°W | 33.15 Feet |
| Steel Sign Post | | Southwest | .80 Foot |
2. North Sixteenth Corner to Sections 25 and 30, T.35N., R.15 - 16E.
We established this corner at midpoint and on line between the Northeast Section Corner and the East Quarter Corner to Section 25.
Corner references:
- | | | | |
|---------------------|-----|-----------|------------|
| Cedar Stump 5' High | 13" | N20°W | 43.41 Feet |
| Cedar Stump 5' High | 9" | S27°W | 60.50 Feet |
| Steel Sign Post | | Southeast | .70 Foot |
3. Center Quarter Corner to Section 25, T.35N., R.15E.
We established this corner at the intersection of the North-South and East-West quarter lines to Section 25.
Corner references:
- | | | | |
|-----------------|-----|-----------|------------|
| Cedar | 14" | S88°E | 31.60 Feet |
| White Spruce | 8" | S47°W | 40.13 Feet |
| Black Ash | 8" | N52°W | 67.94 Feet |
| Steel Sign Post | | Southeast | 1.0 Feet |

Stock No. 26273

Sheet 4 of 5

4. Center East Sixteenth Corner to Section 25, T.35N., R.15E.

We established this corner at midpoint and on line between the Center Quarter Corner and the East Quarter Corner to Section 25.

Corner references:

White Spruce	5"	N18°W	55.82 Feet
Sugar Maple	8"	S58°E	57.61 Feet
Basswood	11"	S28°W	13.06 Feet
Steel Sign Post		East	1.50 Feet

5. Southeast Sixteenth Corner to Section 25, T.35N., R.15E.

We established this corner at the intersection of the South and East Sixteenth Lines to Section 25.

Corner references:

Cedar	14"	N32°E	42.20 Feet
Tamarack	8"	S70°W	19.89 Feet
Steel Sign Post		Northeast	1.10 Feet

6. South Sixteenth Corner to Sections 25 and 30, T.35N., R.15 - 16E.

We established this corner at midpoint and on line between the Southeast Section Corner and the East Quarter Corner to Section 25.

Corner references:

Black Spruce	4"	N03°E	32.48 Feet
White Birch	8"	S05°E	21.37 Feet
Steel Sign Post		Northwest	1.50 Feet

7. West Sixteenth Corner to Sections 25 and 36, T.35N., R.15E.

We established this corner at midpoint and on line between the Southwest Section Corner and the South Quarter Corner to Section 25.

Corner references:

Yellow Birch	11"	S01°E	29.09 Feet
Red Maple	10"	S71°W	16.26 Feet
Sugar Maple	8"	N15°W	41.39 Feet
Steel Sign Post		Northwest	1.17 Feet

8. East Sixteenth Corner to Sections 25 and 36, T.35N., R.15E.

We established this corner at midpoint and on line between the Southeast Section Corner and the South Quarter Corner to Section 25.

Corner references:

Red Maple	6"	N22°E	85.72 Feet
Black Cherry	6"	S24°E	37.57 Feet
White Spruce	12"	S16°W	36.31 Feet
Steel Sign Post		Northwest	1.00 Foot

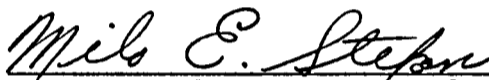
Stock No. 26273

Sheet 5 of 5

SURVEYOR'S AFFIDAVITSTATE OF WISCONSIN)
FOREST COUNTY)SS

I, Milo E. Stefan, Registered Land Surveyor in the State of Wisconsin hereby certify: that I have surveyed and subdivided Section 25, Township 35 North, Range 15 East, Fourth Principal Meridian, Forest County, Wisconsin.

The Plat Map and notes are a correct representation of the corners recovered, restored and established. I have restored and recovered and established these corners in accordance with the rules of survey of the public lands and with the Statutes of the State of Wisconsin.

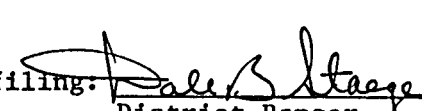


Milo E. Stefan, RLS No. 1558
Rhineland, Wisconsin

Date of Survey: 1990



Plat ready for filing:


District Ranger