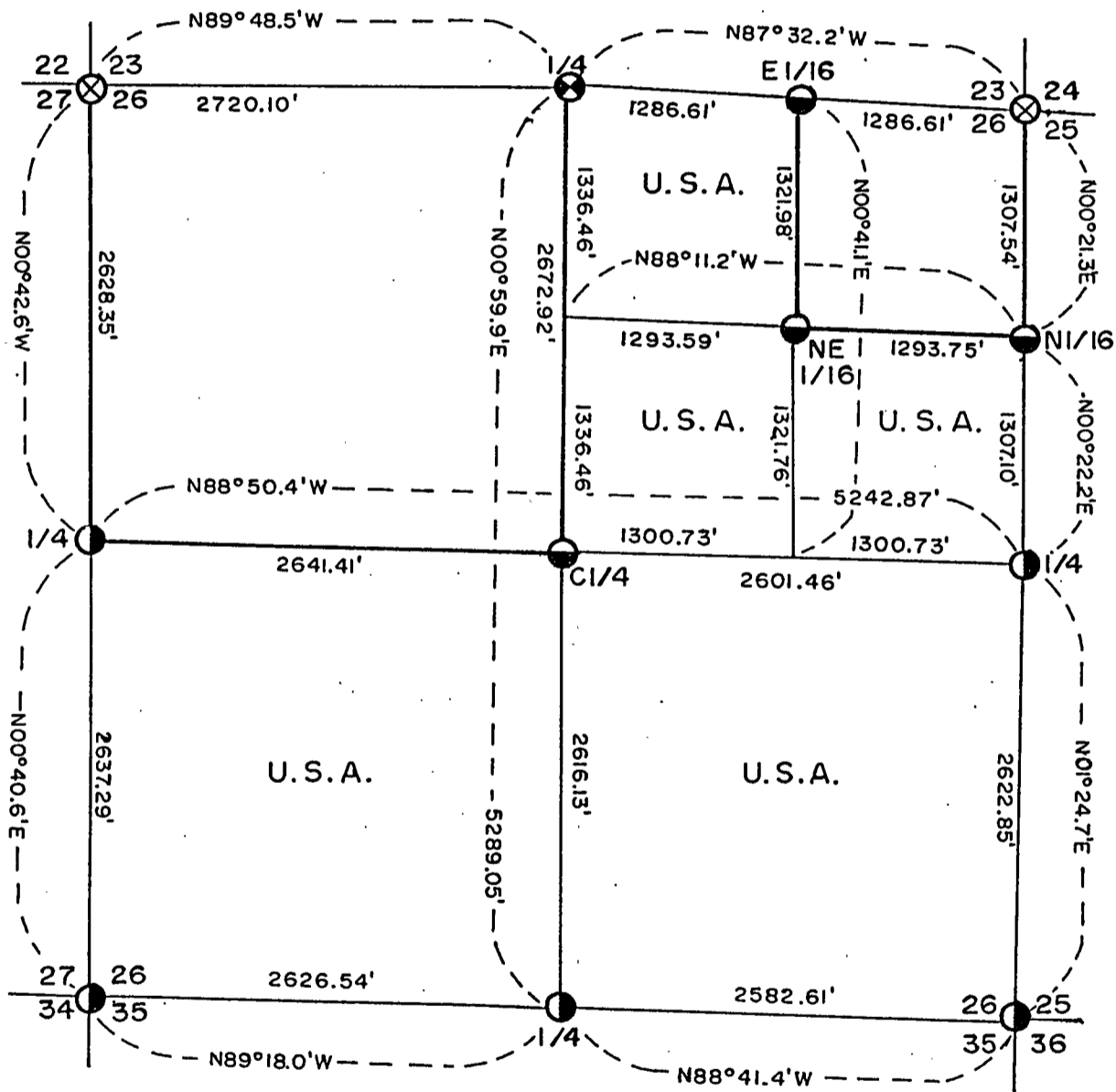
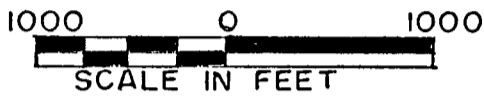







PLAT OF SURVEY

U. S. GOVERNMENT LANDS

Being the S1/2; W1/2, NE1/4; and SE1/4, NE1/4 of Section 26
 Township 35 North, Range 15 East, Fourth Principal Meridian
 FOREST COUNTY, WISCONSIN



LEGEND

-  2" X 30" Iron Pipe Buried In Road
-  2 1/2" X 36" Aluminum Monument
-  1" X 36" Aluminum Monument
-  Marked Boundary Lines, U. S. Government Lands
-  "x" On Boulder With Witness Corners

Conversion Factors:
 Feet to Meters - 3.280833
 Meters to Feet - 0.304801

Stock No. 26273

Sheet 2 of 5

SURVEY NOTES

This survey was made by Milo E. Stefan, a Registered Land Surveyor in the State of Wisconsin, under contract to the U. S. Department of Agriculture, Forest Service, for the purpose of restoring and establishing corners on the perimeter of Section 26, for establishing the boundaries of U. S. Government land on the perimeter and within Section 26, Township 35 North, Range 15 East, Fourth Principal Meridian, Forest County, Wisconsin.

The U. S. Government Lands in this Section were acquired in 1935 and 1973.

The original Government subdivision survey of this township was made in 1859 by James McBride.

The corner positions recovered, restored and established by this survey are marked by the monument described in the map legend.

The corner positions established were located to an accuracy of one part in 3000.

The bearings between corner positions are true bearings as determined by solar observations. This survey is orientated with the solar observations by the Forest Service on the south side of Section 36.

The field notes of this survey and a copy of this plat are on file in the Forest Supervisor's Office at Rhinelander, Wisconsin.

CORNERS RECOVERED AND RESTORED

1. Section Corner to Sections 22, 23, 26 and 27, T.35N., R.15E.
Corner monumented by Jean F. Resvick in 1965 and restored by Al Harrison, R.L.S. Certificate on file in Forest County, Document No. 131259.
2. Section Corner to Sections 23, 24, 25 and 26, T.35N., R.15E.
Corner monumented by Jean F. Resvick, R.L.S., in 1965 and restored by Al Harrison, R.L.S. Certificate on file in Forest County, Document No. 131257.
3. Section Corner to Sections 25, 26, 35 and 36, T.35N., R.15E.
We restored this corner at the post hole, supported by three of the four bearing tree remains from the original survey.
Corner references:

Sugar Maple	10"	S81°E	23.68 Feet
Sugar Maple	14"	S24°W	44.04 Feet
Sugar Maple	10"	N77°W	10.93 Feet
Sugar Maple	14"	N15°W	13.73 Feet
Steel Sign Post		Northeast	1.65 Feet
4. Section Corner to Sections 26, 27, 34 and 35, T.35N., R.15E.
Corner monumented by Al Harrison, R.L.S. Certificate on file in Forest County, Document No. 131256.

Stock No. 26273

Sheet 3 of 5

5. Quarter Corner to Section 23 and 26, T.35N., R.15E.

Corner restored by Al Harrison, R.L.S., from reference given by Melindy in 1909. Corner position in old roadway and falls on a boulder.

Corner references:

Witness Corner - 2½" x 36" Aluminum Monument - North	33.00 Feet
Steel Sign Post	North 1.76 Feet
Witness Corner - 2" x 36" Aluminum Monument - South	33.00 Feet
Steel Sign Post	South .95 Feet
Sugar Maple 6"	S35°W 46.54 Feet
Sugar Maple 10"	N76°W 32.70 Feet

6. Quarter Corner to Section 25 and 26, T.35N., R.15E.

Corner monumented by Al Harrison, R.L.S. Certificate on file in Forest County, Document No. 129849.

7. Quarter Corner to Section 26 and 35, T.35N., R.15E.

Corner position restored from evidence given by Rifleman on an 874 by the Forest Service in 1936. We recovered the location poster and mound of stone with post hole.

Corner references:

Sugar Maple 10"	N23°E	30.37 Feet
Sugar Maple 10"	S34°E	26.98 Feet
Sugar Maple 10"	South	24.50 Feet
Sugar Maple 6"	N58°W	40.37 Feet
Steel Sign Post	East	1.00 Feet

8. Quarter Corner to Section 26 and 27, T.35N., R.15E.

Corner position restored from evidence given by Rifleman on an 874 by the Forest Service in 1936 and evidence recovered from Melindys and Smiths notes in 1910. We recovered the location poster, mound of stone and the stump hole from a new bearing tree by Smith and Melindy.

Corner references:

Sugar Maple 20"	N23°E	164.55 Feet
White Spruce 6"	S19°W	13.09 Feet
White Spruce 11"	N66°W	28.42 Feet
White Spruce 8"	N86°E	24.70 Feet
Steel Sign Post	Northeast	1.50 Feet

9. North Sixteenth Corner to Sections 25 and 26, T.35N., R.15E.

Corner established at midpoint and on line between the Quarter Corner South and the Section Corner North by Al Harrison, R.L.S.

Corner references:

Sugar Maple 6"	N49°E	37.22 Feet
Sugar Maple 4"	S26°W	23.78 Feet
Sugar Maple 6"	N09°W	29.44 Feet
Steel Sign Post	Southeast	1.32 Feet

Stock No. 26273

Sheet 4 of 5

CORNERS ESTABLISHED

1. East Sixteenth Corner to Sections 23 and 26, T.35N., R.15E.
We established this corner at midpoint and on line between the Northeast Section Corner and the North Quarter Corner to Section 26.
Corner references:

Sugar Maple	10"	S33°E	17.43 Feet
Sugar Maple	10"	S64°W	58.03 Feet
Sugar Maple	8"	N38°W	33.82 Feet
Steel Sign Post		South	18.40 Feet

2. Northeast Sixteenth Corner to Section 26, T.35N., R.15E.
We established this corner at the intersection of the North and East Sixteenth Lines to Section 26.
Corner references:

Red Maple	8"	South	19.98 Feet
White Spruce	14"	S77°W	28.16 Feet
Black Ash	4"	N08°W	35.66 Feet
Steel Sign Post		Southeast	1.30 Feet

3. Center Quarter Corner to Section 26, T.35N., R.15E.
We established this corner at the intersection of the Quarter Lines to Section 26.
Corner references:

Sugar Maple	12"	N05°E	1.92 Feet
Sugar Maple	16"	S47°W	46.93 Feet
Basswood	18"	N22°W	54.78 Feet
Steel Sign Post		Southeast	2.00 Feet

Stock No. 26273

Sheet 5 of 5

SURVEYOR'S AFFIDAVIT

STATE OF WISCONSIN)
FOREST COUNTY)SS

I, Milo E. Stefan, Registered Land Surveyor in the State of Wisconsin hereby certify: that I have surveyed and subdivided Section 26, Township 35 North, Range 15 East, Fourth Principal Meridian, Forest County, Wisconsin.

The Plat Map and notes are a correct representation of the corners recovered, restored and established. I have restored and recovered and established these corners in accordance with the rules of survey of the public lands and with the Statutes of the State of Wisconsin.

Milo E. Stefan

Milo E. Stefan, RLS No. 1558
Rhineland, Wisconsin

Date of Survey: 1990



Plat ready for filing:

Dale S. Staeger
District Ranger

