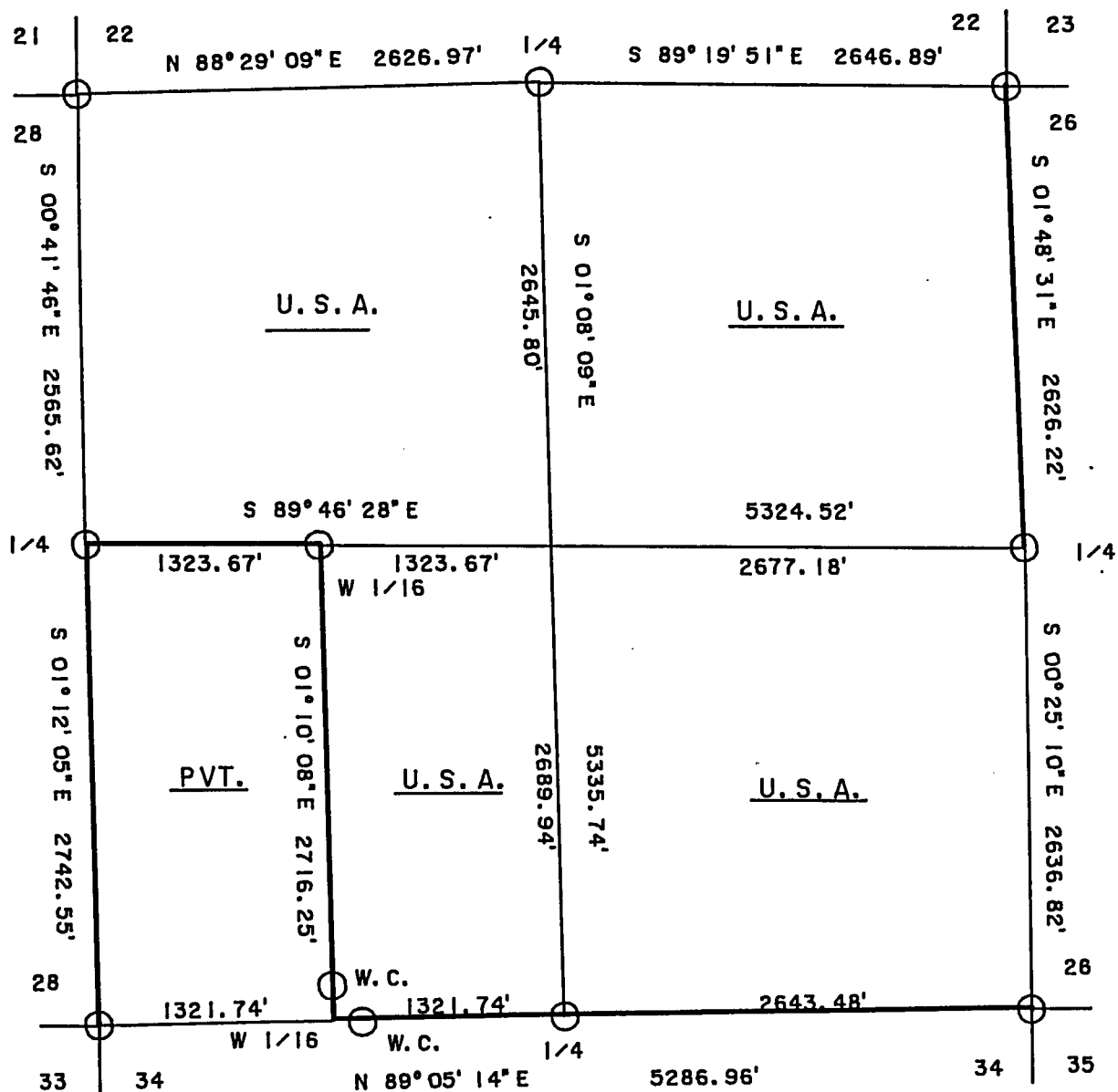
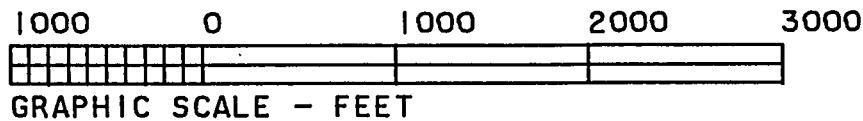


PLAT OF SURVEY U. S. GOVERNMENT LANDS

BEING THE N.E. 1/4; S.E. 1/4; N.W. 1/4; AND
EAST 1/2, S.W. 1/4; SECTION 27, TOWNSHIP 35 NORTH,
RANGE 15 EAST, FOURTH PRINCIPAL MERIDIAN,
FOREST COUNTY, WISCONSIN.



LEGEND

- 2 1/2" ALUMINUM MONUMENT, FOUND IN PLACE.
- 2" BRASSED CAPPED IRON PIPE, FOUND IN PLACE.
- RAILROAD SPIKE IN SURFACED ROAD, FOUND IN PLACE.
- 1" ALUMINUM MONUMENT, SET IN PLACE.
- 1" X 36" ALUMINUM MONUMENT, SET THIS SURVEY.
- MARKED BOUNDARY LINES OF U. S. GOVERNMENT LANDS.



SURVEY NOTES

This survey was made by the U.S. Department of Agriculture, Forest Service, for the purpose of restoring and establishing corners for the perimeter of Section 27 for establishing subdivisional corners within Section 27 and for locating and marking the boundaries of U.S. Government land on their perimeter and within Section 27, Township 35 North, Range 15 East, 4th Principal Meridian, Forest County, Wisconsin.

The U.S. Government lands in Section 27 were acquired in 1935.

The original government subdivision survey of this township was in 1859.

The corner positions recovered, restored and established by this survey are marked by the monument described in the map legend.

The corner positions established were located to an accuracy of one part in 5,000.

The field notes of this survey and a copy of this plat are on file in the Forest Supervisor's Office at Rhinelander, Wisconsin.

Wisconsin North Zone State Plane Coordinates were computed from G.P.S. observations in August 1994 and are based on 1983 North American Datum (U.S. Foot).

The bearings between corner positions are grid bearings based on the Wisconsin North Zone Coordinate System.

Conversions between grid bearings and true bearings are performed by use of the following algebraic formula: True Bearing - Convergence Angle = Grid Bearing. (Close attention to the algebraic sign must be observed, i.e. \pm of the convergence angle.)

Grid distance shown are Wisconsin North Zone State Plane Grid distances. Conversion to surface distance is performed by the formula: (mean elevation of Section 27 = 1560')

$$\left(\frac{\text{Grid Distance}}{\text{Grid Scale Factor} \times \frac{20,906,000}{20,906,000 + \text{Mean Elev.}}} \right) = \text{Surface Distance}$$

COORDINATE VALUES ON 1983 N.A.D.

	North Latitude	West Longitude	Plane Coords		Convergence Angle	Scale Factor
			North	East		
N.W.	45-29-33.556	88-36-47.248	121975.09735	2324160.81267	1-00-01.6	1.000014257
N. $\frac{1}{4}$	45-29-33.787	88-36-10.374	122044.51441	2326786.86890	1-00-28.2	1.000014244
N.E.	45-29-33.020	88-35-33.235	122013.59992	2329433.57836	1-00-55.0	1.000014288
W. $\frac{1}{4}$	45-29-08.227	88-36-47.439	119409.66178	2324191.98793	1-00-01.5	1.000015698
CW1/16	45-29-07.947	88-36-28.865	119404.44854	2325515.65012	1-00-14.9	1.000015714
E. $\frac{1}{4}$	45-29-07.095	88-35-32.725	119388.69133	2329516.46879	1-00-55.4	1.000015763
S.W.	45-28-41.150	88-36-47.304	116667.71260	2324249.48809	1-00-01.6	1.000017255
W1/16	45-28-41.130	88-36-28.756	116688.76830	2325571.05937	1-00-15.0	1.000017256
S. $\frac{1}{4}$	45-28-41.109	88-36-10.207	116709.82401	2326892.63065	1-00-28.3	1.000017258
S.E.	45-28-41.064	88-35-33.110	116751.93809	2329535.77280	1-00-55.1	1.000017260

CORNERS RECOVERED OR RESTORED

1. Corner Common to Sections 22, 23, 26 and 27.
Corner found monumented by Alan Harrison, RLS. Corner Certificate on file in Forest County Courthouse.
2. Corner Common to Sections 26, 27, 34 and 35.
Corner found monumented by Alan Harrison, RLS. Corner Certificate on file in Forest County Courthouse.
3. Corner Common to Section 27, 28, 33 and 34.
Corner found monumented by Jean Resvick, RLS. Corner Certificate on file in Forest County Courthouse.

Corner References

Red Maple (North Fork)	10"	S.25°E.	71.88 feet
Balsam	6"	S.07°E.	63.24 feet
Red Maple	10"	S.15°W.	66.60 feet
Wood Sign Post	4" X 4"	Southwest	1.80 feet

4. Corner Common to Sections 21, 22, 27 and 28.
Corner found monumented by Alan Harrison, RLS. Corner Certificate on file in Forest County Courthouse.
5. Quarter Corner Common to Sections 22 and 27.
Corner found monumented by Jean Resvick, RLS. Corner Certificate on file in Forest County Courthouse.
6. Quarter Corner Common to Sections 26 and 27.
Corner found monumented by Milo Stefan, RLS. Corner Certificate on file in Forest County Courthouse.
7. Quarter Corner Common to Sections 27 and 34.
Corner found monumented by John Schulke, RLS. Corner Certificate on file in Forest County Courthouse.

Corner References

Sugar Maple	7"	N.36°E.	33.37 feet
Sugar Maple	11"	S.85°W.	53.90 feet
Sugar Maple	8"	N.58°W.	57.60 feet
Steel Sign Post		East	1.30 feet

8. Quarter Corner Common to Sections 27 and 28.
Corner found monumented by Milo Stefan, RLS. Corner Certificate on file in Forest County Courthouse.
9. West One-Sixteenth Corner Common to Sections 27 and 34.
East Witness Corner found monumented by John Schulke from survey of Section 34. True corner position is in beaver pond.

Corner References

Red Maple	13"	S.45°E	56.31 feet
Sugar Maple	6"	S.05°E.	69.06 feet
Steel Sign Post		West	1.30 feet
True Corner Position		S.89°03'19"W.	191.14 feet

CORNERS ESTABLISHED

1. Witness Corner to West One-Sixteenth Corner Common to Sections 27 and 34.
 Corner established on North side of beaver flowage and on the West Sixteenth Line of Section 27. Set 1" X 36" Witness Corner Monument, N.01°10'08"W., 198.42 feet.

Corner References

Sugar Maple	10"	S.74°W.	24.92 feet
Sugar Maple	10"	N.47°W.	17.75 feet
Steel Sign Post		North	0.70 feet
True Corner Position		S.01°10'08"E.	198.42 feet

2. Center-West One-Sixteenth Corner of Section 27.
 Corner established at mid-point and on line between the West Quarter Corner and the Center Quarter Corner.

Corner References

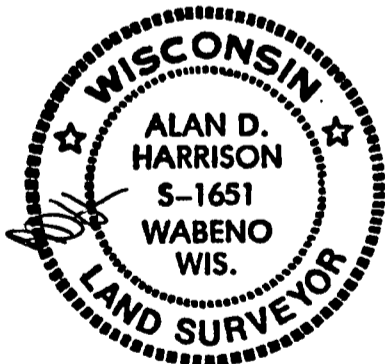
Sugar Maple	9"	N.11°E.	28.57 feet
Sugar Maple	9"	N.52°W.	30.21 feet
Steel Sign Post		Northeast	0.70 feet

SURVEYOR'S AFFIDAVIT

State of Wisconsin]
 County of Forest]

I, Alan D. Harrison, Land Surveyor, U.S.D.A. Forest Service and a Registered Land Surveyor in the State of Wisconsin, do hereby certify that I have surveyed and subdivided Section 27, Township 35 North, Range 15 East, Fourth Principal Meridian, State of Wisconsin.

The plat map and the notes herewith are a correct representation of the land surveyed and divided. I have surveyed and subdivided said section in accordance with the rules for survey of the public lands with the statutes of the State of Wisconsin.



Alan D. Harrison
 LAND SURVEYOR, U.S.D.A. Forest Service
 R.L.S. Number S-1651
 State of Wisconsin

Plat Ready for Filing. *[Signature]*
 District Ranger

Date of Survey: September 1994

