

# PLAT OF SURVEY

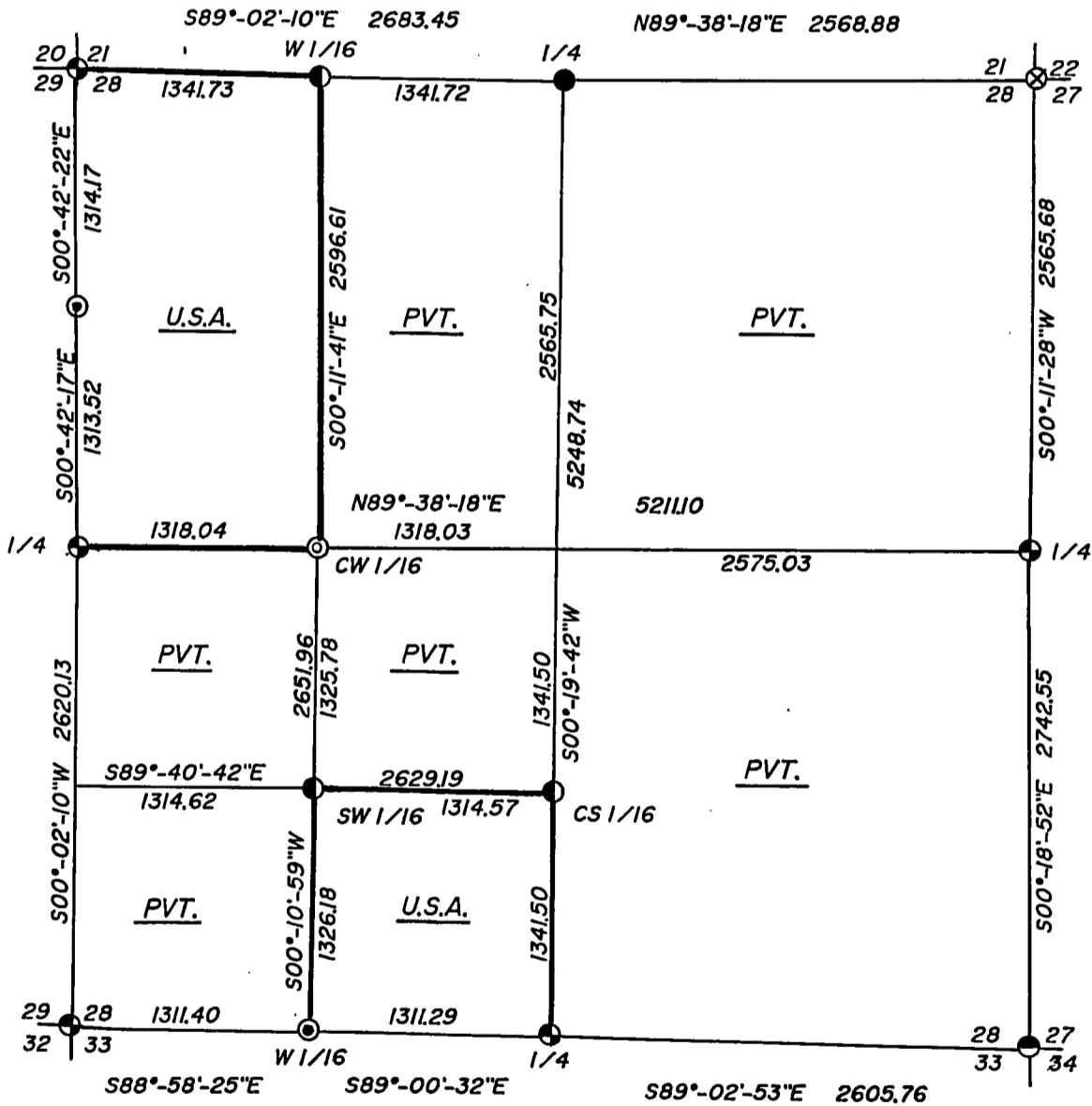
SHEET 1 OF 4

## U.S. GOVERNMENT LANDS

BEING THE W 1/2 OF THE NW 1/4 AND THE SE 1/4 OF  
THE SW 1/4 OF SECTION 28,  
TOWNSHIP 35 NORTH, RANGE 15 EAST,  
FOURTH PRINCIPAL MERIDIAN, TOWN OF WABENO

## FOREST COUNTY, WISCONSIN

SCALE: 1" = 1000'



### LEGEND

- = 1" X 36" ALUMINUM MONUMENT, SET THIS SURVEY.
- ⊙ = RAILROAD SPIKE, SET THIS SURVEY.
- ⊕ = 2" ALUMINUM MONUMENT, FOUND IN PLACE.
- = 2-1/2" ALUMINUM MONUMENT, FOUND IN PLACE.
- ⊙ = 1" ALUMINUM MONUMENT, FOUND IN PLACE.
- = 2" BRASS CAPPED IRON PIPE, FOUND IN PLACE.
- ⊗ = RAILROAD SPIKE, FOUND IN PLACE.

SECTION 28, T35N-R15E  
SURVEY NOTES

This survey was made by Coleman Engineering Company for the U.S. Department of Agriculture-Forest Service under Contract No. 53-56A-2-788 for the purpose of restoring and establishing corners on the perimeter of Section 28 for establishing subdivisional corners within Section 28, and for locating and marking the boundaries of U.S. Government lands along the perimeter and within Section 28, and that the survey is based on U.S.D.A. U.S. Forest Service survey control completed in 1992 for Section 28, Township 35 North, Range 15 East, Fourth Principal Meridian, Forest County, State of Wisconsin.

The U.S. Government acquired ownership within Section 28 in 1938 and 1953.

The original township line and subdivision surveys of T35N-R15E were completed in 1858 and 1859, respectively.

The corner positions recovered, restored and established by this survey are marked by the monument described in the map legend.

The corner positions established were located to a minimum accuracy of 1 part in 5000.

The bearings between corner positions are true bearings as determined by solar (hour-angle) observations.

The field notes of the survey and a copy of this plat are on file in the Forest Supervisor's office in Rhinelander, Wisconsin.

CORNERS RECOVERED OR RESTORED

1. Section corner common to Sections 20, 21, 28 and 29.  
Corner position monumented by Milo Stefan, RLS 1558. Recovered by John R. Garske, RLS 1685, in 1993.

Established corner references:

|                 |     |       |            |
|-----------------|-----|-------|------------|
| Basswood        | 11" | S85°E | 32.22 feet |
| Sugar           | 14" | S45°E | 54.14 feet |
| Sugar           | 14" | N84°W | 29.86 feet |
| Sugar           | 14" | N84°W | 25.70 feet |
| Steel Sign Post |     | East  | 1.14 feet  |

2. Quarter corner common to Sections 21 and 28.  
Corner position monumented by Alan Harrison, RLS 1651. Certificate on file in Forest County - Document No. 146968.
3. Section corner common to Sections 21, 22, 27 and 28.  
Corner position monumented by Alan Harrison, RLS, 1651. Certificate on file in Forest County - Document No. 144427.
4. Quarter corner common to Sections 27 and 28.  
Corner position monumented by Milo Stefan, RLS, 1558. Certificate on file in Forest County - Document No. 124188.
5. Section corner common to Sections 27, 28, 33 and 34.  
Corner position monumented by Jean Resvick, RLS, 802. Certificate on file in Forest County - Document No. 98038.
6. Quarter corner common to Sections 28 and 33.  
Corner position monumented by Milo Stefan, RLS, 1558. Corner certificate on file in Forest County - Document No. 124198.

7. West sixteenth corner common to Sections 28 and 33.  
Corner position monumented by John C. Schulke, RLS 1655, in 1989. Recovered by John R. Garske, RLS 1685, in 1993.

## Corner References:

|                 |     |           |            |
|-----------------|-----|-----------|------------|
| Hemlock         | 21" | N32°E     | 34.63 feet |
| Maple           | 11" | S39°W     | 16.34 feet |
| Steel sign Post |     | Southeast | 1.1 feet   |

8. Section corner common to Sections 28, 29, 32 and 33.  
Corner position monumented by Milo Stefan, RLS, 1558. Corner certificate on file in Forest County - Document No. 124197.
9. Quarter corner common to Sections 28 and 29.  
Corner position monumented by Kim Pritzlaff, RLS, 1259. Certificate on file in Forest County - Document No. 143535.
10. North sixteenth corner common to Sections 28 and 29.  
Corner position monumented by Kim Pritzlaff, RLS No. 1259, in 1991. Recorded January 3, 1992, in Forest County.

## Established corner references:

|                 |     |       |            |
|-----------------|-----|-------|------------|
| Maple           | 7"  | N42°W | 6.28 feet  |
| Maple           | 12" | S05°W | 34.80 feet |
| Steel Sign Post |     | West  | 1.11 feet  |

CORNERS ESTABLISHED

1. West one-sixteenth (1/16) corner common to Sections 21 and 28.  
Established corner position at the mid-point and on line between the north quarter corner and northwest corner of Section 28.

## Established corner references:

|                 |     |           |            |
|-----------------|-----|-----------|------------|
| Maple           | 10" | N81°E     | 4.31 feet  |
| Maple           | 12" | S25°W     | 11.47 feet |
| Steel Sign Post |     | Southwest | 2.30 feet  |

2. Center south sixteenth (1/16) corner of Section 28.  
Established the corner position at the mid-point and on line between the center of Section 28 and the south quarter corner of Section 28.

## Established corner references:

|                 |    |           |            |
|-----------------|----|-----------|------------|
| Sugar           | 6" | N21°E     | 34.02 feet |
| Sugar           | 6" | S52°W     | 45.30 feet |
| Steel Sign Post |    | Southwest | 2.28 feet  |

3. Southwest sixteenth (SW 1/16) corner of Section 28.  
Established corner position at the intersection of the south and west sixteenth lines of Section 28.

## Established corner references:

|                 |     |           |            |
|-----------------|-----|-----------|------------|
| Sugar           | 11" | N46°E     | 32.43 feet |
| Hemlock         | 11" | S25°W     | 7.61 feet  |
| Steel Sign Post |     | Southeast | 1.93 feet  |

4. Center west sixteenth (CW 1/16) corner of Section 28.  
 Established the corner position at the mid-point and on line between the center of Section 28 and the west quarter corner of Section 28. Set a railroad spike at the corner position in a paved road.

Established corner references:

|  |     |           |            |
|--|-----|-----------|------------|
| Set Witness Corner -<br>1" aluminum monument<br>with stamped cap |     | Due North | 33.00 feet |
| Power Pole   |     | N21°E     | 36.67 feet |
| Spruce   | 12" | N25°W     | 60.18 feet |

SURVEYOR'S AFFIDAVIT

State of Wisconsin )  
 County of Forest ) S.S.

I, John R. Garske, Land Surveyor for Coleman Engineering Company and a registered surveyor in the State of Wisconsin, hereby certify that this survey of Section 28, Township 35 North, Range 15 East, Fourth Principal Meridian, State of Wisconsin, was performed under my direct responsible supervision.

The plat map and the notes herewith are a correct representation of the land surveyed and divided. I have surveyed and subdivided said section in accordance with the rules for survey of the public lands and with the statutes of the State of Wisconsin.



*John R. Garske*  
 John R. Garske  
 Coleman Engineering Company  
 R.L.S., State of Wisconsin  
 License No. S-1685

Plat ready for filing:

*Sue Vas*  
 District Ranger

Date of Survey: 1993

