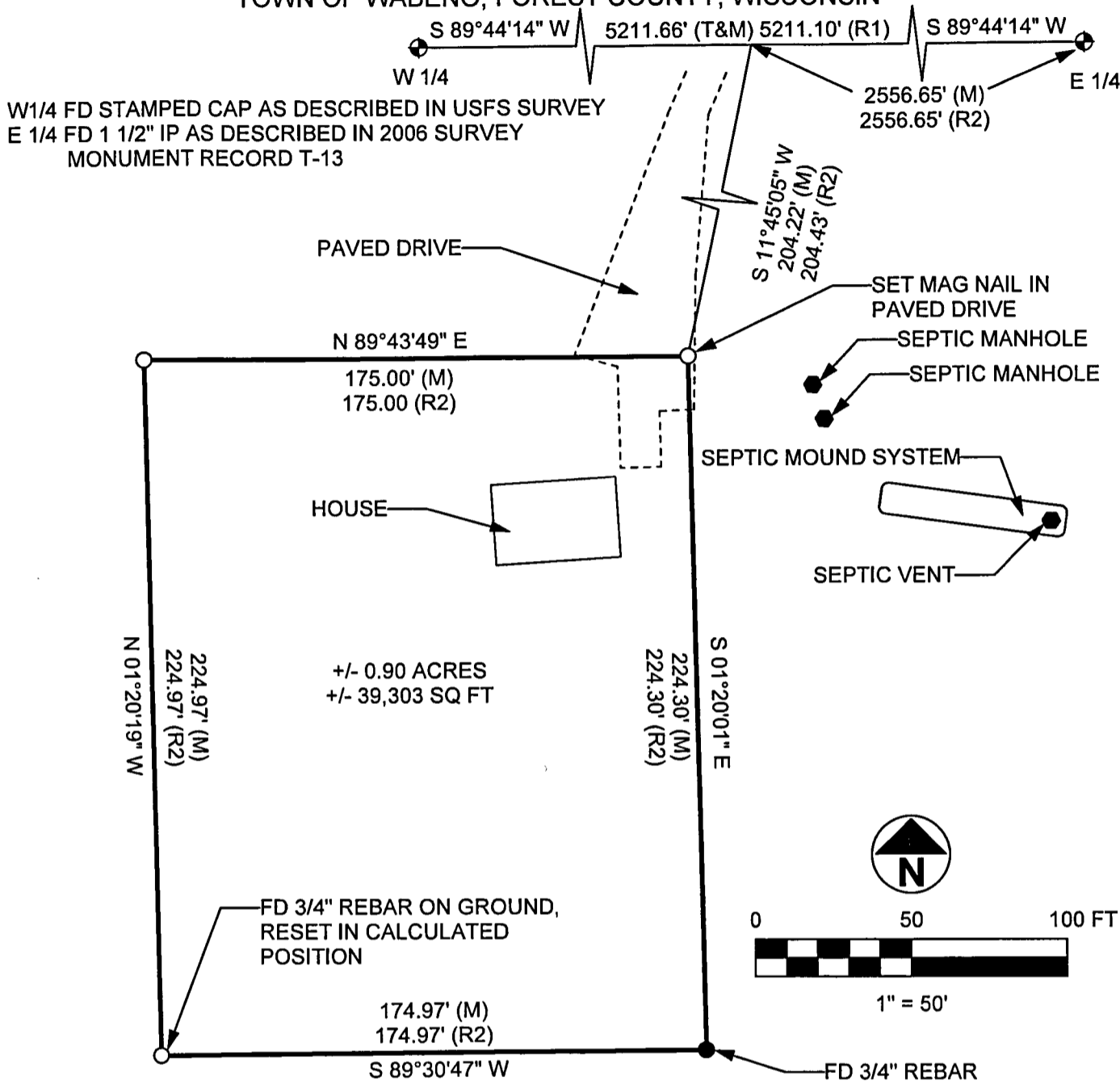


RETRACEMENT SURVEY

THE SW 1/4 AND THE SE 1/4
SECTION 28, T35N, R15E,
TOWN OF WABENO, FOREST COUNTY, WISCONSIN



I HEREBY CERTIFY ON BEHALF OF MOUNTAIN ENGINEERING, INC. THAT SAID SURVEY AND THE ABOVE MAP WERE MADE IN ACCORDANCE WITH THE ACCEPTABLE PROFESSIONAL STANDARDS IN ACCORDANCE WITH APPLICABLE SECTIONS OF CHAPTER AE-7 OF WISCONSIN ADMINISTRATION CODE AND THAT THE INFORMATION CONTAINED HEREON IS TO THE BEST OF MY KNOWLEDGE, INFORMATION AND BELIEF, A TRUE AND ACCURATE REPRESENTATION THEREOF.

Zachary J. Stevens
LAND SURVEYOR

ZACHARY J. STEVENS, RLS 2467-008

LEGEND:

- ⊕ GOVERNMENT CORNER
- SET 1" PIPE WITH SURVEY CAP OR AS NOTED
- FOUND CORNER AS NOTED
- (M) = MEASURED THIS SURVEY
- (T) = TOTAL DISTANCE
- FD = FOUND
- IP = IRON PIPE
- (R1) = RECORD, USFS PLAT OF SURVEY
- (R2) = RECORD, 1995 MSA SURVEY

MOUNTAIN ENGINEERING, INC. AND SURVEYING

N2960 North US Hwy. 2
Iron Mountain, Michigan 49801
Phone 906-779-5762 Fax 906-779-5789
Email mtneengineering@chartermi.net

PREPARED FOR:
FOREST COUNTY POTAWATOMI
PO BOX 340
CRANDON, WI 54520

DATE:
JULY 26, 2013

BEARING BASIS:
GPS GRID AZIMUTH

JOB NAME:
FCP 28-35-15

PAGE 1 OF 1

THE OWNER AGREES TO INDEMNIFY AND HOLD MOUNTAIN ENGINEERING, INC. HARMLESS FROM ANY DAMAGE, LIABILITY OR COST, INCLUDING ATTORNEY'S FEES AND COST OF DEFENSE ARISING FROM ANY CHANGES OR ALTERATIONS MADE BY ANYONE OTHER THAN MOUNTAIN ENGINEERING, INC., OR FROM ANY REUSE OF THE DRAWINGS AND DATA WITHOUT THE PRIOR WRITTEN CONSENT OF MOUNTAIN ENGINEERING, INC.