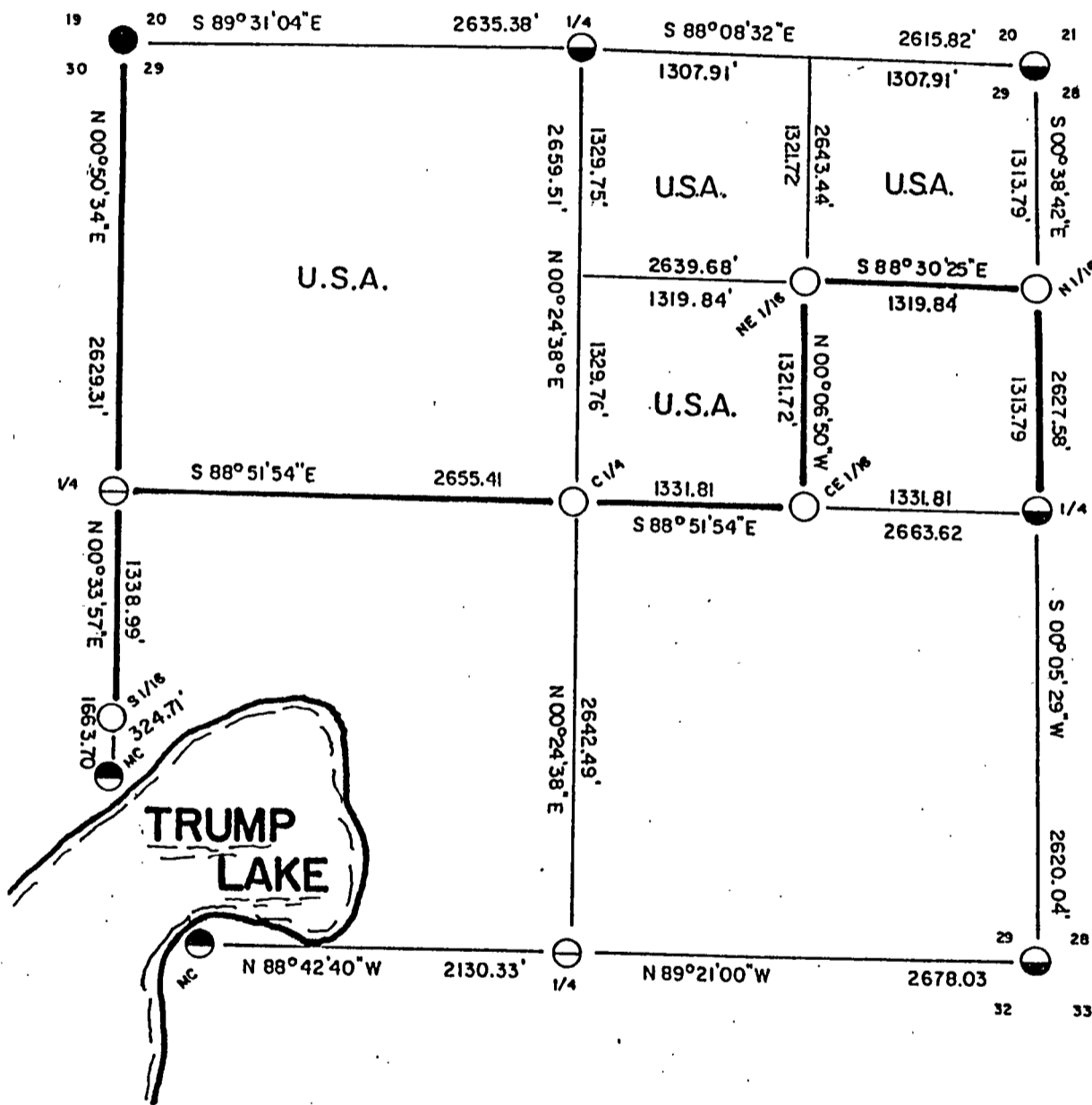
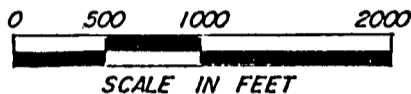


# PLAT OF SURVEY U.S. GOVERNMENT LAND

Sheet one of five

Being the NW 1/4, the N 1/2 NE 1/4 and the SW 1/4 NE 1/4 of Section 29  
Township 35 North, Range 15 East 4<sup>th</sup> Principal Meridian, Forest  
County Wisconsin



LEGEND

- 1 1/4" IRON PIPE FOUND UNDER ROAD SURFACE
- ⊖ 2" ALUMINUM FOREST COUNTY MONUMENT
- ⊙ 2" ALUMINUM MONUMENT WITH STAMPED CAP
- ⊕ SET 2 1/2" ALUMINUM MONUMENT, 36" LONG, WITH STAMPED CAP
- SET 1" ALUMINUM MONUMENT, 36" LONG, WITH STAMPED CAP
- MARKED BOUNDARY LINES OF U.S. GOVERNMENT LANDS

Stock No. 26273

Sheet two of five

SURVEY NOTES

This survey was made by AARON ASSOCIATES, of Oconto Falls, Wisconsin, under contract with the U.S. Department of Agriculture, Forest Service, for the purpose of restoring and establishing corners along the perimeter of Section 29, for establishing subdivisional corners within Section 29, and for locating and marking the boundaries of U.S. Government lands on their perimeter and within Section 29, Township 35 North, Range 15 East, 4th Principal Meridian, Forest County, Wisconsin.

The U.S. Government lands in Section 29 were acquired in 1935, 1938.

The original survey of this township was made in 1859.

The corner positions recovered, restored, and established by this survey are marked with monuments as described in the Legend on the face of this Plat Map.

The corner positions established, were located to an accuracy of one part in 5000.

The bearings between corner positions are True bearings as determined from solar observations.

The field notes of this survey and a copy of the Plat Map are on file in the Forest Supervisor's Office at Rhinelander, Wisconsin.

CORNERS RECOVERED AND RESTORED

- 1) Section Corner to Sections 20-21-28-29, T35N, R15E.

This corner position was found marked with a 2" aluminum post set by US Forest Service survey crew and Milo Stefan, RLS.

Corner references:

Sugar	8"	S 44°E	54.11 ft.
Sugar	8"	S 82°W	29.87 ft.
Sugar	12"	N 86°W	25.73 ft.
Basswood	8"	S 22°E	32.14 ft.
Steel sign post		East	1.25 ft.

- 2) Section Corner to Sections 28-29-32-33, T35N, R15E.

This corner position was found marked with a 2" aluminum monument set by the US Forest Service survey crew and Milo Stefan, RLS. Corner certificate on file in the Forest County courthouse.

- 3) Section Corner to Sections 19-30-20-29, T35N, R15E.

This corner position was found marked with a 1½" iron pipe below road surface being set by the US Forest Service survey crew and Milo Stefan. Corner certificate on file in the Forest County courthouse.

- 4) Quarter Corner to Sections 20-29, T35N, R15E.

This corner position was found marked with a 2" aluminum monument set by the US Forest Service survey crew and Milo Stefan. Corner certificate on file in the Forest County courthouse.

Stock No. 26273

Sheet three of five

## 5) Quarter Corner to Sections 28-29, T35N, R15E.

This corner position was found marked with a 2" aluminum monument set by Milo Stefan, RLS of the US Forest Service survey crew. Corner certificate on file in the Forest County courthouse.

## 6) Quarter Corner to Sections 29-32, T35N, R15E.

This corner position was found marked with an aluminum Forest County Monument set by R. Belliveau, RLS. Corner certificate on file in the Forest County courthouse.

## 7) Quarter Corner to Sections 29-30, T35N, R15E.

This corner position was found marked with an aluminum Forest County Monument set by Thomas Arnott, RLS. Certificate on file in the Forest County courthouse.

## 8) Meander Corner to Sections 29-32, T35N, R15E on East Shore of Trump Lake.

This corner position was restored from line and distance measurements along the section line between Sections 29-32 as taken along the west half of the line from iron pipe monuments found marking the lot lines of the Connor's Plat. Corner references:

2" aluminum Witness Corner	East	8.00 ft.
NW corner of house	N 88°E	49.50 ft.
1½" iron pipe	N 20°E	22.77 ft.
Red Pine	S 02°E	51.25 ft.
Steel sign post	S 50°W	43.90 ft.

## 9) Meander Corner to Sections 29-30, T35N, R15E on North Shore of Trump Lake.

This corner position was restored from a 1" iron rod found and used as the meander corner by local surveyors. Distances and line from Nathan Smith's surveys of the lake all fit within fractions of a foot from evidence recovered as noted on Smith's record.

Corner references:

SW corner of boathouse	S 84°E	7.75 ft.
SE corner of Owen's cabin	N 20°W	46.31 ft.
SE corner of Staetdler's cabin	S 82°W	82.40 ft.
SW corner of Boyle's cabin	N 15°E	39.40 ft.
Steel sign post	North	0.40 ft.

CORNERS ESTABLISHED

## 10) Center Quarter Corner of Section 29, T35N, R15E.

This corner position was set at the straight line intersection point of the north-south and east-west quarter lines of Section 29.

Corner references:

Maple	10"	S 18°W	11.51 ft.
Maple	13"	N 47°W	21.80 ft.
2" iron pipe		N 82°E	7.65 ft.
Steel sign post		East	0.96 ft.

Stock No. 26273

Sheet four of five

## 11) Center-East Sixteenth Corner of Section 29, T35N, R15E.

This corner position was established at the midpoint and on line between the center quarter and east quarter corners of Section 29.

Corner references:

Maple	12"	N 42°E	20.42 ft.
Maple	6"	S 25°E	6.25 ft.
Steel sign post		North	1.30 ft.

## 12) Northeast Sixteenth Corner of Section 29, T35N, R15E.

This corner position was established at the straight line intersection point of the north-south and east-west sixteenth lines in the northeast quarter of Section 29.

Corner references:

Yellow Birch	7"	N 12°W	2.35 ft.
Maple	8"	S 82°E	9.77 ft.
Steel sign post		East	1.48 ft.

## 13) North Sixteenth Corner Between Sections 28-29, T35N, R15E.

This corner position was established at the midpoint and on line between the northeast and east quarter corners of Section 29.

Corner references:

Maple	7"	N 42°W	6.28 ft.
Maple	12"	S 05°W	34.80 ft.
Steel sign post		West	1.11 ft.

## 14) South Sixteenth Corner Between Sections 29-30, T35N, R15E.

This corner position was established at the proportionate distance and on line between the west quarter corner and meander corner on the west line of Section 29. Nathan Smith's Hemlock bearing tree was located as a rotted stump above ground bearing N 55°W for 17.16 ft from the corner established, which is so stated in his field notes.

Corner references:

Maple	7"	N 08°E	17.59 ft.
1½" Iron Pipe		North	18.53 ft.
NW Corner of Garage		S 24°E	57.85 ft.
Steel sign post		North	0.65 ft.



Stock No. 26273

Sheet five of five

SURVEYOR'S AFFIDAVIT

I, Kim H Pritzlaff Registered Land Surveyor in the State of Wisconsin, hereby certify: that I have surveyed and subdivided Section 29, Township 35 North, Range 15 East, Fourth Principal Meridian, Forest County, Wisconsin.

That the within Plat Map is a true and correct representation, along with the field notes, of the lands surveyed and subdivided. That I have surveyed and subdivided Section 29 in accordance with the rules for survey of the Public Lands and with the Statutes of the State of Wisconsin.

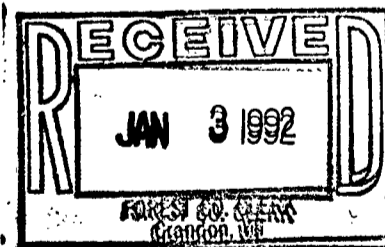


*Kim H. Pritzlaff*

Kim H Pritzlaff, RLS No. 1259  
AARON ASSOCIATES  
Oconto Falls, Wisconsin

Date of Survey: 1991

Acting *Darrell E. Richards*  
District Ranger Approval



*Susan J. Miller*  
Deputy County Clerk