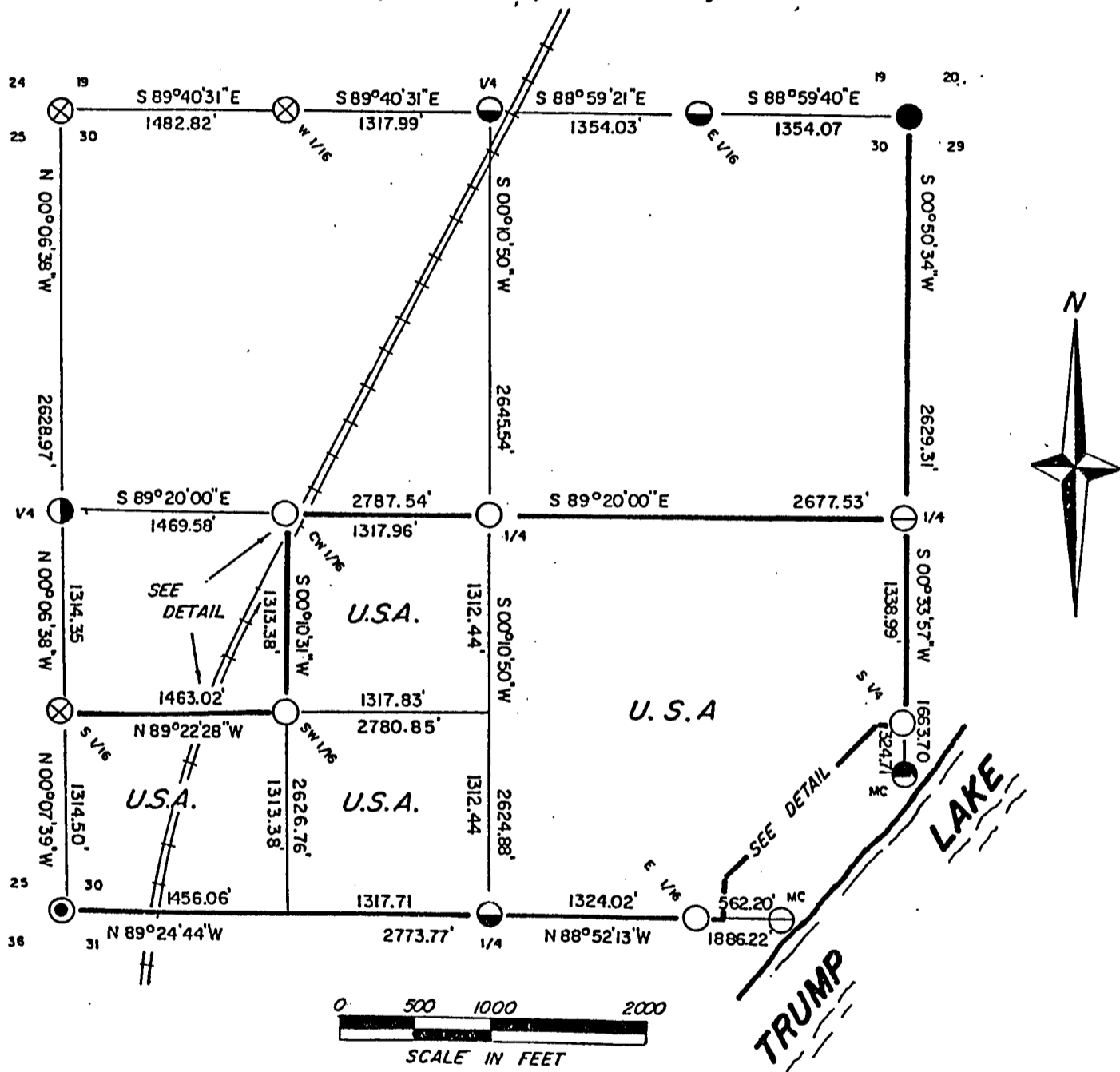


COPY

# PLAT OF SURVEY U.S. GOVERNMENT LAND

Sheet one of ten

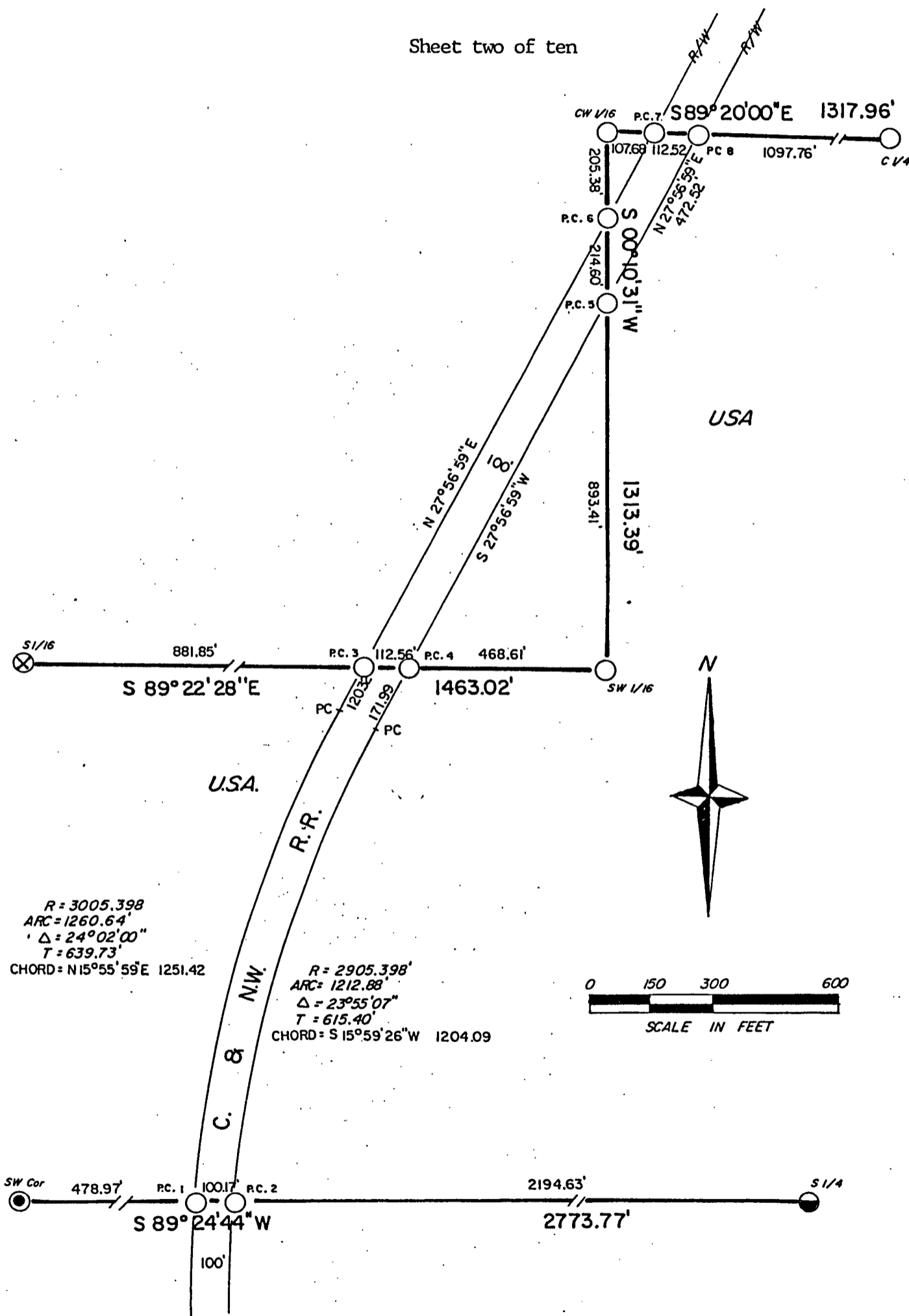
Being the E 1/2 SW 1/4, the Fr. SW 1/4 SW 1/4, the N 1/2 SE 1/4, the SW 1/4 SW 1/4 and Part of Gov't Lot 1 of Section 30, Township 35 North, Range 15 East, 4<sup>th</sup> Principal Meridian, Forest County Wisconsin



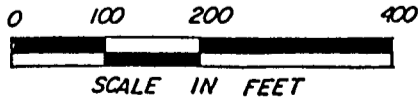
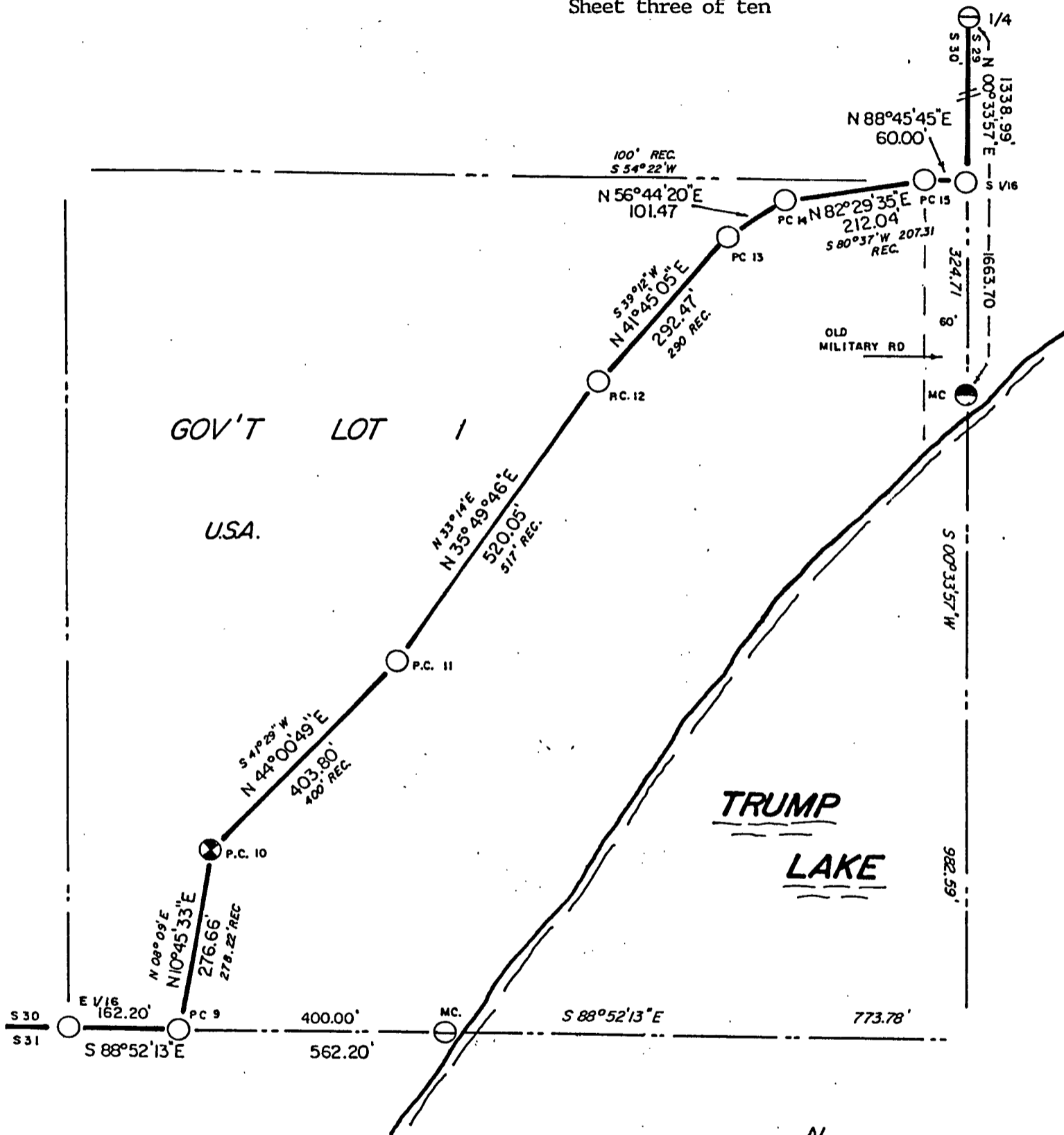
## LEGEND

- SET 2½" DIAMETER ALUMINUM MONUMENT, 36" LONG, WITH STAMPED CAP
- ⊗ RAILROAD SPIKE FOUND IN ROAD SURFACE
- 1¼" IRON PIPE FOUND BELOW ROAD SURFACE
- 2" ALUMINUM MONUMENT WITH STAMPED CAP
- 2" ALUMINUM FOREST COUNTY MONUMENT WITH STAMPED CAP
- SET 1" DIAMETER ALUMINUM MONUMENT, 36" LONG, WITH STAMPED CAP
- ⊗ SET RAILROAD SPIKE IN ROAD SURFACE ( ON DETAIL SHEET )
- MARKED BOUNDARY LINES OF U.S. GOVERNMENT LANDS
- P.K. NAIL FOUND IN ROAD SURFACE
- 2" ALUMINUM WISCONSIN D.O.T. MONUMENT

Sheet two of ten



Sheet three of ten



Stock No. 26273

Sheet four of ten

## SURVEY NOTES

This survey was made by AARON ASSOCIATES, of Oconto Falls, Wisconsin, under contract with the U.S. Department of Agriculture, Forest Service, for the purpose of restoring and establishing corners along the perimeter of Section 30, for establishing subdivisional corners within Section 30, and for locating and marking the boundaries of U.S. Government lands on their perimeter and within Section 30, Township 35 North, Range 15 East, 4th Principal Meridian, Forest County, Wisconsin.

The U.S. Government Lands in Section 30 were acquired in 1935, 1944, and 1952.

The original survey of this township was made in 1859.

The corner positions recovered, restored, and established by this survey, are marked with monuments described in the legend on the face of this Plat Map.

The corner positions established, were located to an accuracy of one part in 5000.

The bearings between corner positions are True Bearings as determined from solar observations.

The field notes of this survey and a copy of the Plat Map are on file in the Forest Supervisor's Office, at Rhinelander, Wisconsin.

CORNERS RECOVERED AND RESTORED

1. Section Corner to Sections 19 -30, T30N, R15E and 24-25, T30N, R14E.

This corner position was found marked with a railroad spike set by Milo Stefan, RLS from witness corner evidence of Jean Resvick, RLS.

Corner references:

2" iron pipe with brass cap	N 47°12'E	70.00 ft.
NE corner of building	S 63°W	64.20 ft.
D.O.T. monument, WC # 1	NW	41.52 ft.
D.O.T. monument, WC # 2	NW	66.41 ft.
D.O.T. monument, WC # 3	NW	53.84 ft.
D.O.T. monument, WC # 4	NW	75.17 ft.
Steel sign post NW of WC # 3		0.68 ft.
Basswood 18"	N 63°E	89.12 ft.
Basswood 10"	N 34°W	73.80 ft.

2. Section Corner to Sections 19-20-29-30, T30N, R15E.

This corner position was found marked with a 1½" iron pipe under the gravel road surface set by US Forest Service survey crew from corner perpetuation through the years.

Corner references:

Sugar Maple 7"	N 59°E	71.44 ft.
Yellow Birch 5"	S 31°E	22.23 ft.
Black Ash 10"	S 12°W	52.19 ft.
Hemlock 22"	N 39°W	45.91 ft.
Reference Monument	North	32.01 ft.
Reference Monument	South	24.10 ft.
Steel sign post	North	33.51 ft.

Stock No. 26273

Sheet five of ten

## 3. Section Corner to Sections 30-31, T35N, R15E, and 25-36, T35N, R14E.

This corner position was found marked with a PK Nail in the road centerline, from which a Forest Service reference monument and the DOT ties all fit to Aluminum Monument which the DOT set in 1985 from perpetuated evidence.

Corner references:

2" iron pipe with brass cap (USFS)	N 67°35'W	75.00 ft.
D.O.T. Reference monument	N 51°27'E	99.56 ft.
D.O.T. Reference Monument	S 55°22'E	74.28 ft.
D.O.T. Reference Monument	S 51°27'W	91.03 ft.
D.O.T. Reference Monument	N 55°22'W	102.80 ft.

## 4. Quarter Corner to Sections 19-30, T35N, R15E.

This corner position was found marked with a 2" aluminum monument set by Milo Stefan, RLS from perpetuated corner evidence.

Corner references:

Sugar	12"	N 60°E	129.64 ft.
Red Pine	14"	S 71°E	88.22 ft.
Power Pole		S 74°W	97.55 ft.
SE corner house foundation		N 35°W	92.96 ft.

## 5. Quarter Corner to Sections 29-30, T35N, R15E.

This corner was found marked with a 2" aluminum monument set by Thomas Arnott, RLS from corner perpetuation, and verified by Milo Stefan, RLS in 1984.

Corner references:

Sugar	14"	N 15°E	15.30 ft.
Sugar	10"	S 46°E	30.97 ft.
Sugar	18"	S 07°W	48.59 ft.
Steel sign post		North	2.3 ft.

## 6. Quarter Corner to Sections 30-31, T35N, R15E.

This corner position was found marked with a 2" aluminum monument set by Milo Stefan, RLS from old corner perpetuation.

Corner references:

White Ash	18"	S 24°E	16.52 ft.
Sugar	16"	S 72°W	39.97 ft.
White Ash	14"	N 17°W	35.01 ft.
Steel sign post		West	2.1 ft.

## 7. Quarter Corner to Sections 25, T35N, R14E and 30, T35N, R15E.

This corner position was found marked with an aluminum D.O.T. monument, set by the State of Wisconsin Department of Transportation from corner perpetuation evidence.

Corner references:

D.O.T. Reference Monument # 1	North	79.89 ft.
D.O.T. Reference Monument # 2	South	34.55 ft.
D.O.T. Reference Monument # 3	South	73.71 ft.
D.O.T. Reference Monument # 4	South	106.43 ft.

Stock No. 26273

Sheet six of ten

## 8. South Sixteenth Corner to Sections 25-30, T35N, R14 &amp; 15E.

This corner position was found marked with a railroad spike in the road centerline set by the U.S. Forest Service survey crew. Plat of Survey showing this corner on file.

## 9. West Sixteenth Corner to Sections 19-30, T35N, R15E.

This corner position was found marked with a railroad spike in the road surface set by the U.S. Forest survey crew. Plat of Survey on file showing this corner position.

## 10. East Sixteenth Corner to Sections 19-30, T35N, R15E.

This corner position was found marked with a 2" aluminum monument set by the U.S. Forest Service survey crew. Plat of Survey showing this corner on file.

CORNERS ESTABLISHED

## 11. Center Quarter Corner of Section 30, T35N, R15E.

This corner position was set at the straight line intersection point of the north-south and east-west quarter lines of section 30.

Corner references:

Basswood	6"	S 66°W	23.25 ft.
Maple	8"	N 55°W	31.21 ft.
Steel sign post		West	0.61 ft.

## 12. Center-West Sixteenth Corner of Section 30, T35N, R15E.

This corner position was set at the proportionate distance and on line between the west quarter and center quarter corners of section 30.

Corner references:

Maple	10"	S 30°W	19.34 ft.
Maple	7"	S 72°W	21.81 ft.
Steel sign post		South	1.00 ft.

## 13. Southwest Sixteenth Corner of Section 30, T35N, R15E.

This corner position was set at the intersection point of sixteenth lines in the southwest quarter of Section 30.

Corner references:

Maple	9"	N 83°E	11.51 ft.
Maple	7"	S 23°W	26.14 ft.
Steel sign post		South	0.70 ft.

## 14. South Sixteenth Corner to Sections 29-30, T35N, R15E.

This corner position was set at the proportionate distance and on line between the east quarter corner of section 30 and the meander corner on the north side of Trump Lake on the east line of section 30. The position fit Nathan Smith's survey within tenths of a foot and his Hemlock bearing tree N 55°W for 17.16 ft. was also found to fit.

Corner references:

Maple	7"	N 08°E	17.59 ft.
1½" Iron Pipe		North	18.53 ft.
NW corner of garage		S 24°E	57.85 ft.
Steel sign post		North	0.65 ft.

Stock No. 26273

Sheet seven of ten

## 15. East Sixteenth Corner to Sections 30-31, T35N, R15E.

This corner was established at the recorded distances as witnessed by the deeds and Plats of record in Government Lot 1, all being surveyed by Nathan Smith in the early 1900s. The corner was set on line between the meander corner restored by Smith and the South quarter corner restored by Smith and lying 562.20 ft. west of the meander corner.

Corner references:

Maple	18"	N 74°W	45.78 ft.
Ironwood	5"	N 26°E	62.67 ft.
Steel sign post		East	1.13 ft.

## 16. Meander Corner to Sections 29-30, T35N, R15E.

This corner was established from an existing 1" iron rod found and used by local surveyors through the years, perpetuated by Nathan Smith surveys of the 1900s. Alignment and distances between the meander corner, quarter corner and sixteenth corners to the north fit Smith's record extremely well. I reset this corner with a Forest Service monument.

Corner references:

SW corner concrete boat house		S 84°E	7.75 ft.
SE corner of Owen's cabin		N 20°W	46.31 ft.
SE corner of Staetdler's cabin		S 82°W	82.40 ft.
SW corner of Boyle's cabin		N 15°E	39.11 ft.
Steel sign post		North	0.40 ft.

## 17. Property Corner No. 1 of Section 30, T35N, R15E.

This corner position was established at the intersection point of the south line of Section 30 with the west line of the C & NW Railroad.

Corner references:

Cherry	7"	N 18°E	4.83 ft.
Popple	5"	S 60°W	5.30 ft.
Steel sign post		West	1.00 ft.

## 18. Property Corner No. 2 of Section 30, T35N, R15E.

This corner position was established at the intersection point of the south line of Section 30 with the east line of the C & NW Railroad.

Corner references:

Popple	6"	N 10°W	12.86 ft.
Popple	8"	N 85°E	9.35 ft.
Steel sign post		East	1.00 ft.

## 19. Property Corner No. 3 of Section 30, T35N, R15E.

This corner was established at the intersection point of the north line of the SW $\frac{1}{4}$  of the SW $\frac{1}{4}$  of Section 30 with the west line of the C & NW Railroad.

Corner references:

Maple	8"	S 87°W	18.73 ft.
Maple	9"	N 17°W	10.31 ft.
Steel sign post		East	0.40 ft.

Stock No. 26273

Sheet eight of ten

## 20. Property Corner No. 4 of Section 30, T35N, R15E.

This corner position was established at the intersection point of the north line of the SW $\frac{1}{4}$  of the SW $\frac{1}{4}$  of Section 30, with the east line of the C & NW Railroad.

Corner references:

Yellow Birch	15"	S 73°E	18.12 ft.
Basswood	11"	S 10°W	13.85 ft.
Steel sign post		East	1.60 ft.

## 21. Property Corner No. 5 of Section 30, T35N, R15E.

This corner position was established at the intersection point of the west line of the NE $\frac{1}{4}$  of the SW $\frac{1}{4}$  of Section 30 with the east line of the C & NW Railroad.

Corner references:

Hemlock	5"	S 58°E	27.42 ft.
Maple	6"	S 59°W	17.12 ft.
Steel sign post		South	1.30 ft.

## 22. Property Corner No. 6 of Section 30, T35N, R15E.

This corner position was established at the intersection point of the west line of the NE $\frac{1}{4}$  of the SW $\frac{1}{4}$  of Section 30 with the west line of the C & NW Railroad.

Corner references:

Maple	22"	S 44°W	56.72 ft.
Popple	12"	N 10°W	8.59 ft.
Steel sign post		South	3.00 ft.

## 23. Property Corner No. 7 of Section 30, T35N, R15E.

This corner position was established at the intersection point of the east-west quarter line of Section 30 with the west line of the C & NW Railroad. Corner references:

Basswood	9"	N 77°W	23.72 ft.
Maple	10"	N 10°E	22.95 ft.
Steel sign post		East	0.65 ft.

## 24. Property Corner No. 8 of Section 30, T35N, R15E.

This corner position was established at the intersection point of the east-west quarter line of Section 30 with the east line of the C & NW Railroad. Corner references:

Maple	8"	N 62°E	9.50 ft.
Hemlock	9"	S 63°E	27.73 ft.
Steel sign post		East	0.50 ft.

## 25. Property Corner No. 9 of Section 30, T35N, R15E.

This corner position was established on line between the meander corner and the East sixteenth corner along the south line of Section 30 at a point 400.00 ft. distant from the meander corner.

Corner references:

Maple	16"	N 10°E	50.67 ft.
Basswood	6"	N 20°W	36.24 ft.
Steel sign post		West	0.85 ft.



Sheet nine of ten.

## 26. Property Corner No. 10 of Section 30, T35N, R15E.

This corner position was established using the broken boundary method of adjustment between corner positions restored on the south and east boundaries of Section 30. Corner position fell in roadway centerline. Corner references:

Maple	12"	N 24°E	35.19 ft.
Maple	10"	N 52°E	37.24 ft.
Witness Corner		N 43°E	27.28 ft.
Steel sign post		N 43°E	29.51 ft.

## 27. Property Corner No. 11 of Section 30, T35N, R15E.

This corner position was established using the broken boundary method of adjustment between corner positions restored on the south and east boundaries of section 30.

Corner references:

Maple	9"	N 51°W	11.18 ft.
Maple	7"	N 45°E	5.10 ft.
Steel sign post		N 32°E	0.88 ft.

## 28. Property Corner No. 12 of Section 30, T35N, R15E.

This corner position was established using the broken boundary method of adjustment between corners restored on the south and east boundaries of Section 30.

Corner references:

Maple	4"	S 60°W	33.74 ft.
Maple	9"	N 12°E	19.11 ft.
Steel sign post		S 48°W	0.86 ft.

## 29. Property Corner No. 13 of Section 30, T35N, R15E.

This corner position was established using the broken boundary method of adjustment between corner positions restored along the south and east boundaries of Section 30.

Corner references:

Ash	5"	N 03°W	37.21 ft.
Ash	4"	S 12°E	18.88 ft.
Steel sign post		S 58°W	0.75 ft.

## 30. Property Corner No. 14 of Section 30, T35N, R15E.

This corner position was established using the broken boundary method of adjustment between corners restored along the south and east boundaries of Section 30.

Corner references:

Elm	5"	N 33°E	15.65 ft.
Ash	5"	N 11°W	8.70 ft.
Steel sign post		N 72°E	0.85 ft.

Stock No. 26273

Sheet ten of ten

## 31. Property Corner No. 15 of Section 30, T35N, R15E.

This corner position was established on the west line of an old 60 foot wide military road at its intersection with the north line of Government Lot 1 of Section 30.

Corner references:

Basswood clump	8"	N 21°W	23.70 ft.
Basswood clump	10"	N 17°E	27.92 ft.
Steel sign post		West	1.20 ft.

SURVEYOR'S AFFIDAVIT

STATE OF WISCONSIN)  
 OCONTO COUNTY )SS

I, Kim H Pritzlaff, Registered Land Surveyor in the State of Wisconsin, hereby certify that: I have surveyed and subdivided Section 30, Township 35 North, Range 15 East, Fourth Principal Meridian, Forest County, Wisconsin.

That the within Plat Map and notes herewith are a correct representation of the lands surveyed and subdivided. That I have surveyed and subdivided said Section 30 in accordance with the rules for the Survey of Public Lands and with the Statutes of the State of Wisconsin.

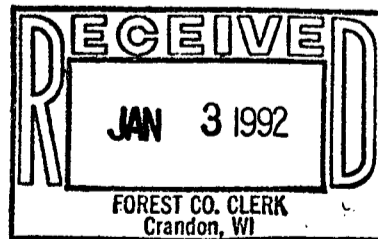


Kim H Pritzlaff, RLS No. 1259  
 AARON ASSOCIATES  
 Oconto Falls, Wisconsin

Date of Survey: 1991

Plat ready for filing:

Acting District Ranger approval



Deputy County Clerk