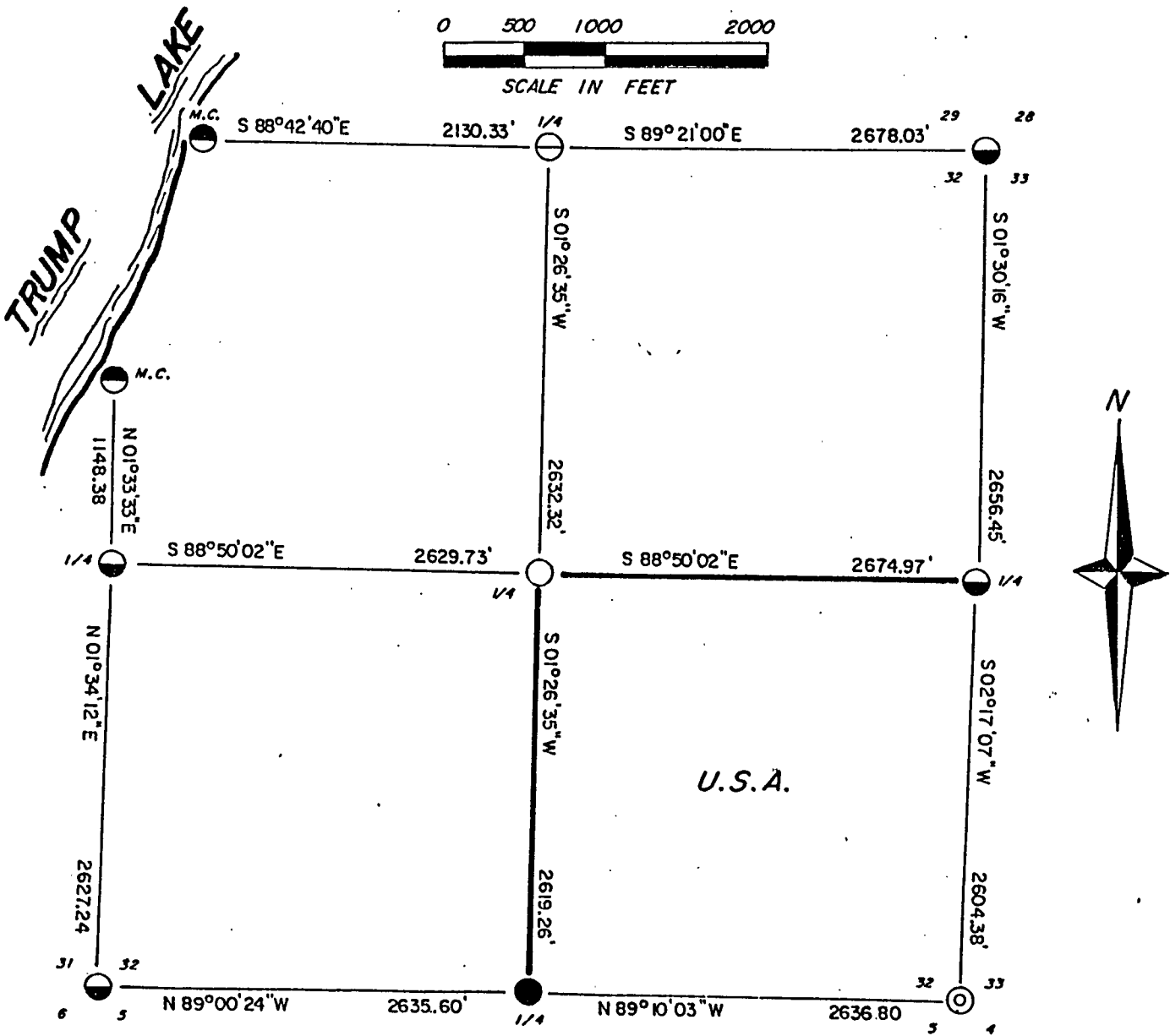


PLAT OF SURVEY U.S. GOVERNMENT LAND

Sheet one of four

Being the SE 1/4 of Section 32, Township 35 North, Range 15 East, 4th
Principal Meridian, Forest County Wisconsin



LEGEND

- 2" ALUMINUM MONUMENT WITH STAMPED CAP
- 1 1/2" IRON PIPE UNDER ROAD SURFACE
- ⊖ 2" ALUMINUM FOREST COUNTY MONUMENT WITH STAMPED CAP
- ⊖ SET 2 1/2" DIAMETER ALUMINUM MONUMENT, 36" LONG, WITH STAMPED CAP
- ⊖ SET 1" DIAMETER ALUMINUM MONUMENT, 36" LONG, WITH STAMPED CAP
- ⊖ 1 1/2" IRON PIPE UNDER ROAD SURFACE
- MARKED BOUNDARY LINES OF U.S. GOVERNMENT LANDS

Stock No. 26273

Sheet two of four

SURVEY NOTES

This survey was made by AARON ASSOCIATES of Oconto Falls, Wisconsin, under contract with the U.S. Department of Agriculture, Forest Service, for the purpose of restoring and establishing corners along the perimeter of Section 32, for establishing subdivisional corners within Section 32, and for locating and marking the boundaries of U.S. Government lands on their perimeter and within Section 32, Township 35 North, Range 15 East, 4th Principal Meridian, Forest County, Wisconsin.

The U.S. Government lands in Section 32 were acquired in 1936.

The original survey of this township was made in 1859.

The corner positions restored, recovered, and established by this survey are marked with monuments described in the legend of this Plat Map.

The corner positions established, were located to an accuracy of one part in 5000.

The bearings between corner positions are True bearings as determined from solar observations.

The field notes of this survey and a copy of the Plat Map are on file in the Forest Supervisor's Office at Rhinelander, Wisconsin.

CORNERS RECOVERED AND RESTORED

- 1) Section Corner to Sections 28-29-32-33, T35N, R15E.

This corner position was found marked with an aluminum monument set by the U.S. Forest Service survey crew and Milo Stefan, RLS. Corner certificate on file in the Forest County courthouse.

- 2) Section Corner to Sections 32-33, T35N, R15E and 4-5, T34N, R15E.

This corner position was found marked with an iron pipe set by the U.S. Forest Service survey crew and Allan Harrison, RLS. Corner certificate on file in the Forest County courthouse.

- 3) Section Corner to Sections 31-32, T35N, R15E and 5-6, T34N, R15E.

This corner position was found marked with an aluminum monument set by the U.S. Forest Service survey crew and Milo Stefan, RLS. Corner certificate on file in the Forest County courthouse.

- 4) Quarter Corner to Sections 31-32, T35N, R15E.

This corner was found marked with an aluminum monument set by the U.S. Forest Service survey crew and Milo Stefan, RLS. Corner certificate on file in the Forest County courthouse.

- 5) Quarter Corner to Sections 29-32, T35N, R15E.

This corner position was found marked with an aluminum Forest County Monument set by R. Belliveau, RLS and restored by Milo Stefan, RLS. Corner certificate on file in the Forest County courthouse.



Stock No. 26273

Sheet three of four

6) Quarter Corner to Sections 32-33, T35N, R15E.

This corner position was found marked with an aluminum monument set by the U.S. Forest Service survey crew and Milo Stefan, RLS. Corner certificate on file in the Forest County courthouse.

7) Quarter Corner to Sections 32, T35N, R15E and 5, T34N, R15E.

This corner position was found marked with an iron pipe set by the U.S. Forest Service survey crew and John Schulke, RLS- contractor. Corner certificate on file in the Forest County courthouse.

8) Meander Corner to Sections 31-32, T35N, R15E on South Shore of Trump Lake.

This corner position was restored from an existing iron pipe found on the south shore and evidenced by irons set on private land owner's lot lines in the Long Beach Summer Resort Plat and Rummel's Second Plat, all being referenced to surveys of Nathan Smith's in the early 1900s.

Corner references:

Witness Meander Corner	South	5.00 ft.
References to Witness Meander Corner:		
Hemlock	9" N 74°E	19.46 ft.
Hemlock	5" S 61°E	27.23 ft.
Maple	8" S 15°E	23.88 ft.
1½" iron pipe at MC	North	5.00 ft.
Steel sign post	South	0.60 ft.

9) Meander Corner to Sections 29-32, T35N, R15E on East Shore of Trump Lake.

This corner position was restored from iron pipe evidence located along the section line and west of the north quarter corner of Section 32, which marked lot lines of the Connor's Plat and from evidence of property irons marking lot lines of the Long Beach Summer Resort Plat.

Corner references:

Witness Meander Corner	East	8.00 ft.
References to Witness Meander Corner:		
1½" iron pipe	N 20°E	22.77 ft.
NW corner of house	N 88°E	49.50 ft.
Red Pine	15" S 02°W	51.25 ft.
Steel sign post	S 50°W	43.90 ft.
The meander corner fell in a wood dock and no monument was set.		

CORNERS ESTABLISHED

10) Center Quarter Corner of Section 32, T35N, R15E.

This corner position was established at the straight line intersection point of the north-south and east-west quarter lines of Section 32.

Corner references:

Maple	10"	N 33°E	6.38 ft.
Maple	6"	S 08°W	15.76 ft.
Steel sign post		East	1.33 ft.

Stock No. 26273

Sheet four of four

SURVEYOR'S AFFIDAVITSTATE OF WISCONSIN)
OCONTO COUNTY)SS

I, Kim H Pritzlaff, Registered Land Surveyor in the State of Wisconsin, hereby certify: that I have surveyed and subdivided Section 32, Township 35 North, Range 15 East, 4th Principal Meridian, Forest County, Wisconsin.

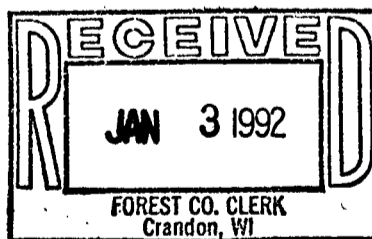
That the within Plat Map and notes herewith are a true and correct representation of the lands surveyed and subdivided; that I have surveyed and subdivided said Section 32 in accordance with the rules of survey of the Public Lands and the Statutes of the State of Wisconsin.



Kim H Pritzlaff, RLS No. 1259
AARON ASSOCIATES
Oconto Falls, Wisconsin

Date of Survey: 1991

Acting District Ranger approval



Deputy County Clerk