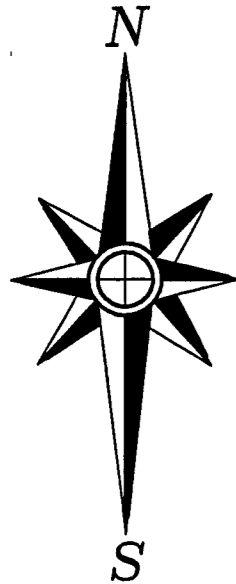


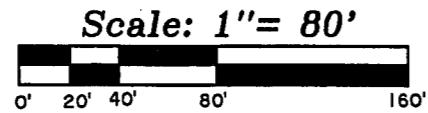
Forest County
Grid North



Being a Part of The
SE1/4-SW1/4 and the SW1/4-SW1/4
Section 32, T 35 N, R 15 E
Town of Wabeno
Forest County, Wisconsin

NOTE: Legal descriptions are provided on separate sheets.

NOTE: Bearings and Coordinate values are based on Forest County Grid North and are referenced to Wabeno GPS control station QM0775 based on NAD 83 (2011).



Tribal Lands

Tribal Lands

RECEIVED

MAR 18 18

CO. TREASURER

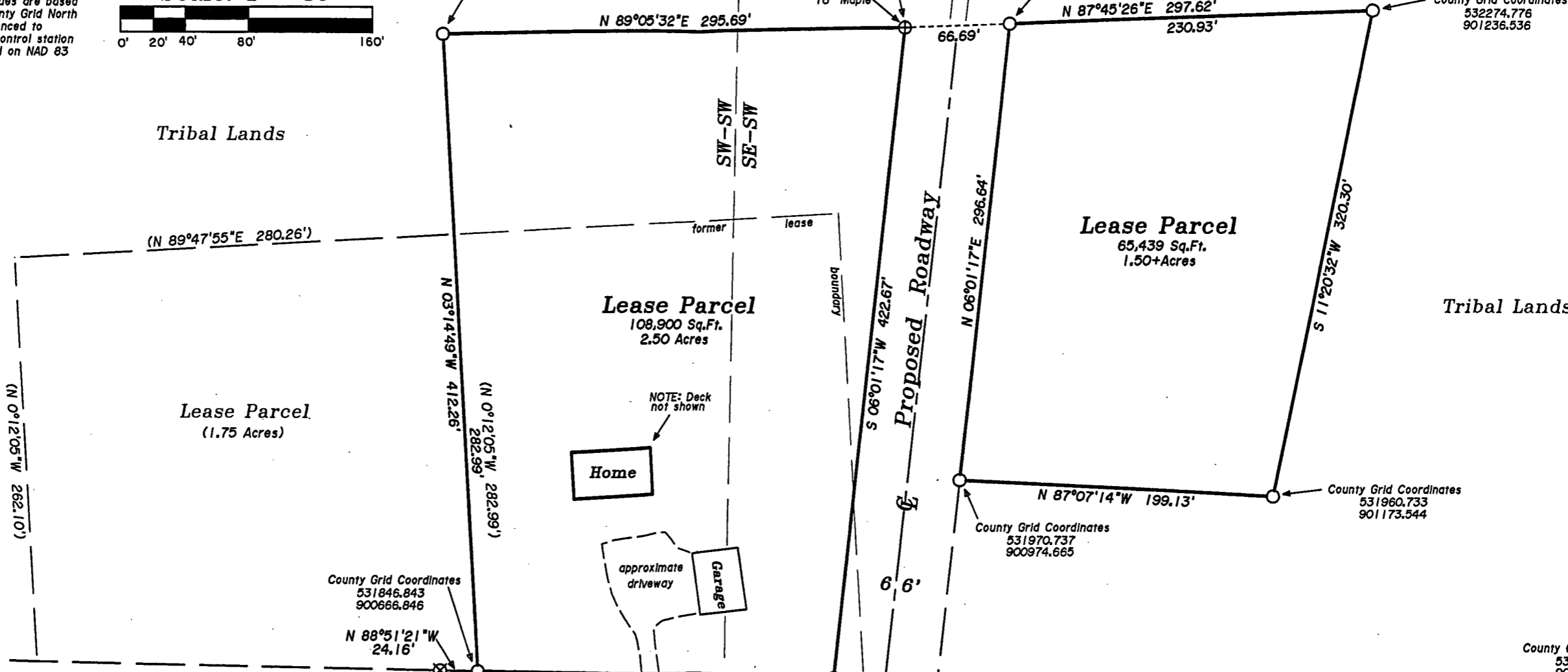
County Grid Coordinates
532258.445
900643.496

County Grid Coordinates
532263.129
900939.145
set in base of
16" Maple

County Grid Coordinates
532265.739
901005.781

County Grid Coordinates
532274.776
901236.536

woods road



County Grid Coordinates
531834.439
899506.603

County Grid Coordinates
531846.843
900666.846

County Grid Coordinates
531970.737
900974.665

County Grid Coordinates
531960.733
901173.544

County Grid Coordinates
531787.654
902141.471

31 32
6 5
Section
Corner

Rummels Road

Section Line
Township Line

T 35 N
T 34 N

Reset from DOT
reference monuments
South 1/4
Corner

Lot 2, CSM #237

Lot 1, CSM #237

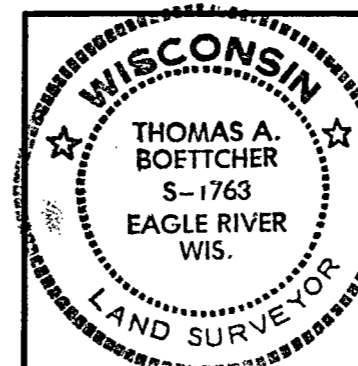
-Legend-

- ALUMINUM MONUMENT UNDER PAVEMENT FOUND IN PLACE
- ⊙ MAGNETIC P.K. NAIL SET IN PAVEMENT FROM REFERENCE MONUMENTS
- ⊗ 3/4" IRON ROD FOUND IN PLACE
- P.K. NAIL IN PAVEMENT FOUND IN PLACE
- 1" IRON PIPE SET
- ⊕ STEEL SURVEY PIN SET IN BASE OF 16" MAPLE
- △ COMPUTED ANGLE POINT
- BEARING & DISTANCE OF RECORD

-Surveyor's Certificate-

"I HEREBY CERTIFY, THAT I HAVE SURVEYED AND MAPPED THE LANDS SHOWN HEREON AND THAT, TO THE BEST OF MY KNOWLEDGE AND BELIEF, THIS SURVEY AND MAP IS A TRUE AND CORRECT REPRESENTATION THEREOF, AND THAT I HAVE COMPLIED WITH THE APPLICABLE REQUIREMENTS OF CHAPTER A-E 7 OF THE WISCONSIN ADMINISTRATIVE CODE'S MINIMUM STANDARDS FOR PROPERTY SURVEYS."
DATED THIS 24th DAY OF MARCH, 2014.

THOMAS A. BOETTCHER, R.L.S. 1763



Survey For
Forest County Potawatomi
P.O. Box 340
Crandon, WI 54520

SCALE: 1" = 80' DATE: 3/24/2014 DWN. BY: TAB

Drawing No. **E3841** Eagle Landmark Surveying Inc.
5035 Hwy. 70 West, Eagle River, WI 54521
P&F (715)479-9810 eaglelandmark@frontier.com

Lot 1, CSM #238