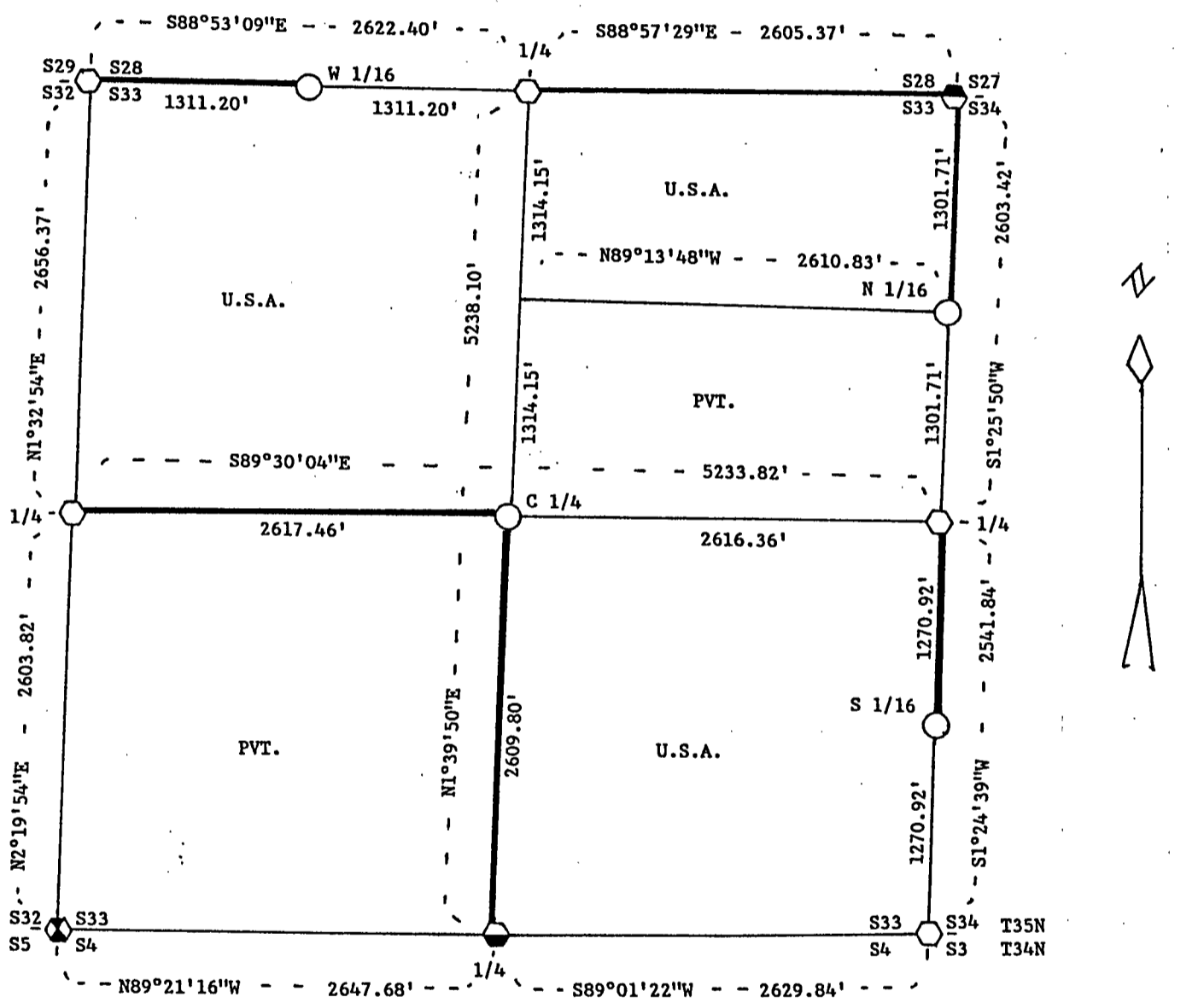
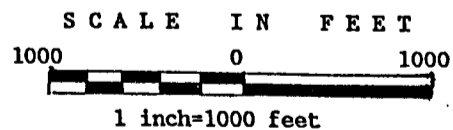


PLAT OF SURVEY FOR CERTIFIED LAND CORNER RESTORATION AND ESTABLISHMENT OF U.S. GOVERNMENT

BEING THE CORNERS FOR THE NORTHWEST 1/4.
THE NORTH HALF OF THE NORTHEAST 1/4 AND THE SOUTHEAST 1/4.
SECTION 33, T35N, R15E, FOURTH PRINCIPAL MERIDIAN
FOREST COUNTY, STATE OF WISCONSIN



LEGEND



- Boundary line marked to standard.
- 1" diameter pipe monument, 36" long with an aluminum cap stamped to identify the corner.
- ⊕ 2 1/2" dia. aluminum pipe monument, 36" long with an aluminum cap stamped to identify the corner.
- ⊕ 2" diameter galvanized wrought iron pipe, 3 ft. long filled with concrete with a brass cap stamped to identify the corner.
- ⊕ 2" diameter galvanized wrought iron pipe, 5 ft. long filled with concrete with a brass cap stamped to identify the corner.
- ⊕ 1 1/2" X 30" iron pipe, buried in the road, set a witness corner 2 1/2" dia. aluminum pipe monument, 36" long with an aluminum cap stamped to identify the location of the corner.

NOTE: Bearings are referenced to solar observation.

Stock No. 26273

Sheet 2 of 4

SURVEY NOTES

This survey was made by John C. Schulke, a Registered Land Surveyor in the State of Wisconsin, for the U.S. Department of Agriculture, Forest Service. The purpose of the survey was for recovery, establishing, marking and perpetuating the corners and boundary lines of the U.S. Government Land on the perimeter and within Section 33, Township 35 North, Range 15 East, Fourth Principal Meridian, Forest County, Wisconsin.

The Original Government Survey of the township boundary was done by Artemas Curtis in 1857. The Original Government Subdivision survey of this township was done by James McBride in 1859.

The bearings between corner positions are true bearings as determined by reference to solar observations. The accuracy of this survey exceeds the State requirement for closure of 1 in 3,000. Corners recovered or established by this survey are marked as described in the map legend. Each monumented corner is referenced to blazed, scribed, painted and tagged bearing trees. Tie bearings are magnetic, and not corrected for declination.

CORNERS RECOVERED AND RESTORED

1. Section Corner Common To Sections 28, 29, 32 and 33.
Corner monument recovered in place and as described on the Certified Land Corner Restoration form filed in the Forest County Register of Deed's Office, Document #124197, in 1983 by Milo Stefan (S-1558).
2. Quarter Corner Between Sections 28 and 33.
Corner monument recovered in place and as described on the Certified Land Corner Restoration form filed in the Forest County Register of Deed's Office, Document #124198, in 1983 by Milo Stefan (S-1558).
3. Section Corner Common To Sections 27, 28, 33 and 34.
Corner monument recovered in place and as described on the Certified Land Corner Restoration form filed in the Forest County Register of Deed's Office, Document #98038, in 1969 by Jean F. Resvick (S-802).
4. Quarter Corner Between Sections 33 and 34.
Corner monument recovered in place and as described on the Certified Land Corner Restoration form filed in the Forest County Register of Deed's Office, Document #124199, in 1983 by Milo Stefan (S-1558).
5. Section Corner Common To Sections 3, 4, 33 and 34.
Corner monument recovered in place and as described on the U.S. Public Land Survey Monument Record form filed in the Forest County Register of Deed's Office, Document #136604, in 1988 by John Schulke (S-1665).
6. Quarter Corner Between Sections 4 and 33.
Corner monument recovered in place and as described on the U.S. Public Land Survey Monument Record form filed in the Forest County Register of Deed's Office, Document #136603, in 1988 by John Schulke (S-1665).
7. Section Corner Common To Sections 4, 5, 32 and 33.
Corner monument recovered in place and as described on the U.S. Public Land Survey Monument Record form filed in the Forest County Register of Deed's Office, Document #135393, in 1988 by Alan Harrison (S-1651).
8. Quarter Corner Between Sections 32 and 33.
Corner monument recovered in place and as described on the Certified Land Corner Restoration form filed in the Forest County Register of Deed's Office, Document #124196, in 1983 by Milo Stefan (S-1558).

Stock No. 26273

Sheet 3 of 4

CORNERS ESTABLISHED

1. West Sixteenth Corner Between Sections 28 and 33.
Corner position is established at the midpoint and on line between the North Quarter corner and the Northwest Section corner of Section 33.

Corner references:

Hemlock	21"	N32°E	34.63 feet
Maple	11"	S39°W	16.34 feet
Steel sign post		Southeast	1.1 feet

2. North Sixteenth Corner Between Sections 33 and 34.
Corner position is established at the midpoint and on line between the East Quarter corner and the Northeast Section corner of Section 33. A 3" dia. existing concrete monument bears N7°17"E a distance of 11.13 feet from the aluminum monument.

Corner references:

Sugar Maple	4"	N12°W	15.22 feet
Sugar Maple	7"	N41°E	4.74 feet
Steel sign post		North	1.5 feet

3. Center Quarter Corner Of Section 33.
Corner position is established at the intersection of a straight lines between opposing Quarter corner of the perimeter of Section 33. The monument placed in a mound of stones. Existing concrete monument bears N17°W a distance of 11.7 feet from the aluminum monument. The center of a two track road bears North a distance of 10.5 feet from the monument.

Corner references:

Maple	9"	N02°W	21.87 feet
Maple	10"	S74°E	39.50 feet
Steel sign post		Northeast	0.9 feet

4. South Sixteenth Corner Between Sections 33 and 34.
Corner position is established at the midpoint and on line between the East Quarter corner and the Southeast Section corner of Section 33. The monument placed in a mound of stones.

Corner references:

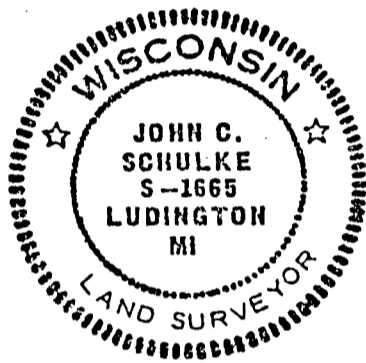
Maple	13"	West	46.37 feet
Maple	16"	N21°E	43.00 feet
Steel sign post		North	1.3 feet

SURVEYOR'S AFFIDAVIT

State of Wisconsin)
County of Forest)ss

I, John C. Schulke, a Cadastral Surveyor, and a Registered Land Surveyor in the State of Wisconsin, hereby certify that I have surveyed and subdivided Section 33, Township 35 North, Range 15 East, Fourth Principal Meridian, State of Wisconsin.

The plat and survey notes herewith are a correct representation of the land surveyed and subdivided. I have surveyed and subdivided said section in accordance with the rules for the survey of the public lands and with the statutes of the State of Wisconsin.



John C. Schulke
4604 So. Pere Marquette Rd.
Ludington, MI 49431
R.L.S. State of Wisconsin
Date of Survey 1989
Certificate S-1665

John C Schulke
June 7th, 1989

Plat ready for filing:

Dale B Staeg
District Ranger

