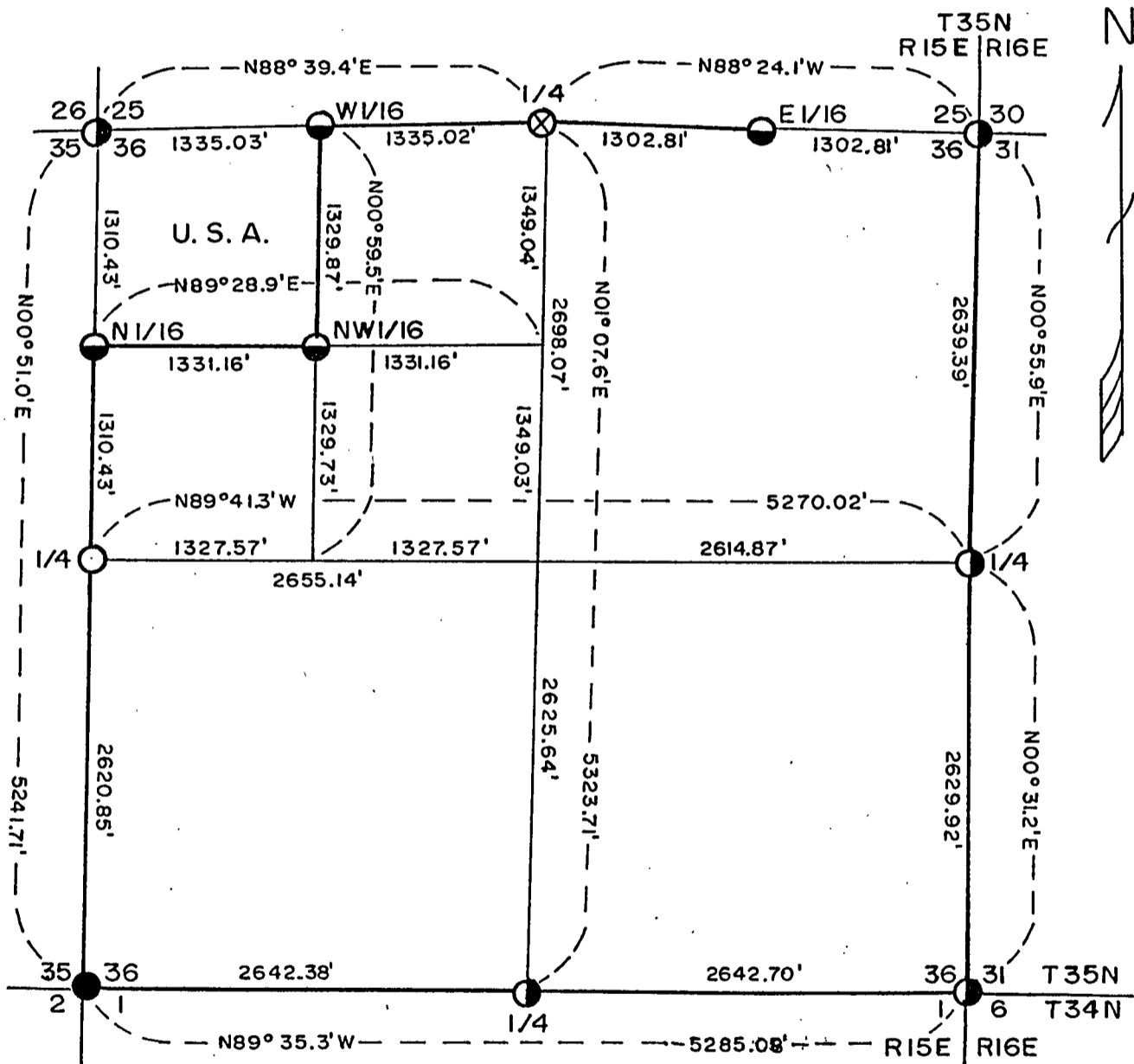
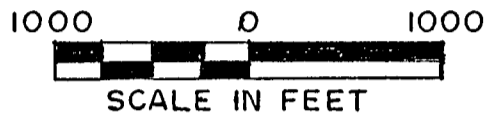


# PLAT OF SURVEY U. S. GOVERNMENT LANDS

Being the NW1/4, NW1/4 of Section 36  
Township 35 North, Range 15 East, Fourth Principal Meridian  
FOREST COUNTY, WISCONSIN



## LEGEND

- 2" X 60" Iron Pipe With Brass Cap
- 2 1/2" X 60" Aluminum Monument
- ◐ 2 1/2" X 36" Aluminum Monument
- ◑ 1" X 36" Aluminum Monument
- ⊗ 2" X 30" Iron Pipe Buried In Road
- Marked Boundary Lines, U. S. Government Lands

Conversion Factors:  
Feet to Meters — 3.280833  
Meters to Feet — 0.304801

Stock No. 26273

Sheet 2 of 4

SURVEY NOTES

This survey was made by Milo E. Stefan, a Registered Land Surveyor in the State of Wisconsin, under contract to the U. S. Department of Agriculture, Forest Service, for the purpose of restoring and establishing corners on the perimeter of Section 36, for establishing the boundaries of U. S. Government land on the perimeter and within Section 36, Township 35 North, Range 15 East, Fourth Principal Meridian, Forest County, Wisconsin.

The U. S. Government Lands in this Section were acquired in 1935.

The Range Line being established in 1859 by Artemas Curtis. The original Government subdivision survey of this township was made in 1859 by James McBride.

The corner positions recovered, restored and established by this survey are marked by the monument described in the map legend.

The corner positions established were located to an accuracy of one part in 3000.

The bearings between corner positions are true bearings as determined by solar observations. This survey is orientated with the solar observations by the Forest Service on the south side of Section 36. The field notes of this survey and a copy of this plat are on file in the Forest Supervisor's Office at Rhinelander, Wisconsin.

CORNERS RECOVERED AND RESTORED

1. Section Corner to Sections 25, 26, 35 and 36, T.35N., R.15E.  
We restored this corner at the post hole, supported by three of the four bearing tree remains from the original survey.  
Corner references:
 

Sugar Maple	10"	S81°E	23.68 Feet
Sugar Maple	14"	S24°W	44.04 Feet
Sugar Maple	10"	N77°W	10.93 Feet
Sugar Maple	14"	N15°W	13.73 Feet
Steel Sign Post		Northeast	1.65 Feet
2. Section Corner to Sections 25, 30, 31 and 36, T.35N., R.15-16E.  
Corner monumented by William B. Cochrane, R.L.S. Certificate on file in Forest County, Document No. 118067.
3. Section Corner to Sections 1, 2, 35 and 36, T.34 - 35N., R.15E.  
Corner monumented by Jean F. Resvick, R.L.S. Certificate on file in Forest County, Document No. 098035.
4. Section Corner to Sections 1, 6, 31 and 36, T.34 - 35N., R.15-16E.  
Corner monumented by Milo E. Stefan, R.L.S. Certificate on file in Forest County, Document No. 127237.
5. Quarter Corner to Sections 25 and 36, T.35N., R.15E.  
Corner monumented by Jean F. Resvick, R.L.S. Certificate on file in Forest County, Document No. 90972.

Stock No. 26273

Sheet 3 of 4

6. Quarter Corner to Sections 35 and 36, T.35N., R.15E.  
We restored this corner by proportionate measure between the Section Corner North and Section Corner South.  
Corner references:
- |                 |    |           |            |
|-----------------|----|-----------|------------|
| Black Ash       | 6" | N78°E     | 15.36 Feet |
| Black Ash       | 6" | S18°E     | 21.90 Feet |
| Cedar           | 6" | S50°W     | 20.92 Feet |
| Black Ash       | 6" | N38°W     | 23.48 Feet |
| Steel Sign Post |    | Northwest | 1.55 Feet  |
7. Quarter Corner to Sections 31 and 36, T.35N., R.15 - 16E.  
Corner monumented by Al Harrison, R.L.S. Certificate on file at Forest County, Document No. 137377.
8. Quarter Corner to Sections 1 and 36, T.34 - 35N., R.15E.  
Corner monumented by Al Harrison, R.L.S. Certificate on file at Forest County, Document No. 138168.

CORNERS ESTABLISHED

1. West Sixteenth Corner Between Sections 25 and 36, T.35N., R.16E.  
We established this corner at midpoint and on line between the Northwest Section Corner and North Quarter Corner to Section 36.  
Corner references:
- |                 |     |           |            |
|-----------------|-----|-----------|------------|
| Yellow Birch    | 11" | S01°E     | 29.09 Feet |
| Red Maple       | 10" | S71°W     | 16.26 Feet |
| Sugar Maple     | 8"  | N15°W     | 41.39 Feet |
| Steel Sign Post |     | Northwest | 1.20 Feet  |
2. East Sixteenth Corner Between Sections 25 and 36, T.35N., R.16E.  
We established this corner at midpoint and on line between the Northeast Section Corner and North Quarter Corner to Section 36.  
Corner references:
- |                 |     |           |            |
|-----------------|-----|-----------|------------|
| Red Maple       | 6"  | N22°E     | 85.72 Feet |
| Black Cherry    | 6"  | S24°E     | 37.57 Feet |
| White Spruce    | 12" | S16°W     | 36.31 Feet |
| Steel Sign Post |     | Northwest | 1.00 Foot  |
3. North Sixteenth Corner Between Sections 35 and 36, T.35N., R.16E.  
We established this corner at midpoint and on line between the Northwest Section Corner and West Quarter Corner to Section 36.  
Corner references:
- |                 |     |           |            |
|-----------------|-----|-----------|------------|
| Sugar Maple     | 7"  | N71°E     | 26.00 Feet |
| White Ash       | 12" | S12°W     | 30.44 Feet |
| Yellow Birch    | 8"  | N22°W     | 17.25 Feet |
| Steel Sign Post |     | Northwest | 1.40 Feet  |
4. Northwest Sixteenth Corner to Section 36, T.35N., R.16E.  
We established this corner at the intersection of the North and West Sixteenth Lines to Section 36.  
Corner references:
- |                 |     |           |            |
|-----------------|-----|-----------|------------|
| Balsam Fir      | 3"  | S73°E     | 15.24 Feet |
| Basswood        | 12" | S01°W     | 17.00 Feet |
| Black Cherry    | 8"  | N82°W     | 88.87 Feet |
| Steel Sign Post |     | Southeast | 1.40 Feet  |

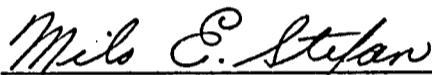
Stock No. 26273

Sheet 4 of 4

SURVEYOR'S AFFIDAVITSTATE OF WISCONSIN)  
FOREST COUNTY )SS

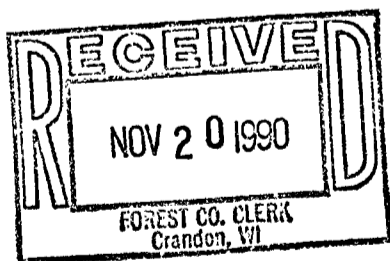
I, Milo E. Stefan, Registered Land Surveyor in the State of Wisconsin hereby certify: that I have surveyed and subdivided Section 36, Township 35 North, Range 15 East, Fourth Principal Meridian, Forest County, Wisconsin.

The Plat Map and notes are a correct representation of the corners recovered, restored and established. I have restored and recovered and established these corners in accordance with the rules of survey of the public lands and with the Statutes of the State of Wisconsin.



Milo E. Stefan, RLS/No. 1558  
Rhineland, Wisconsin

Date of Survey: 1990



Plat ready for filing.



District Ranger