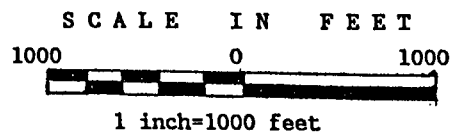
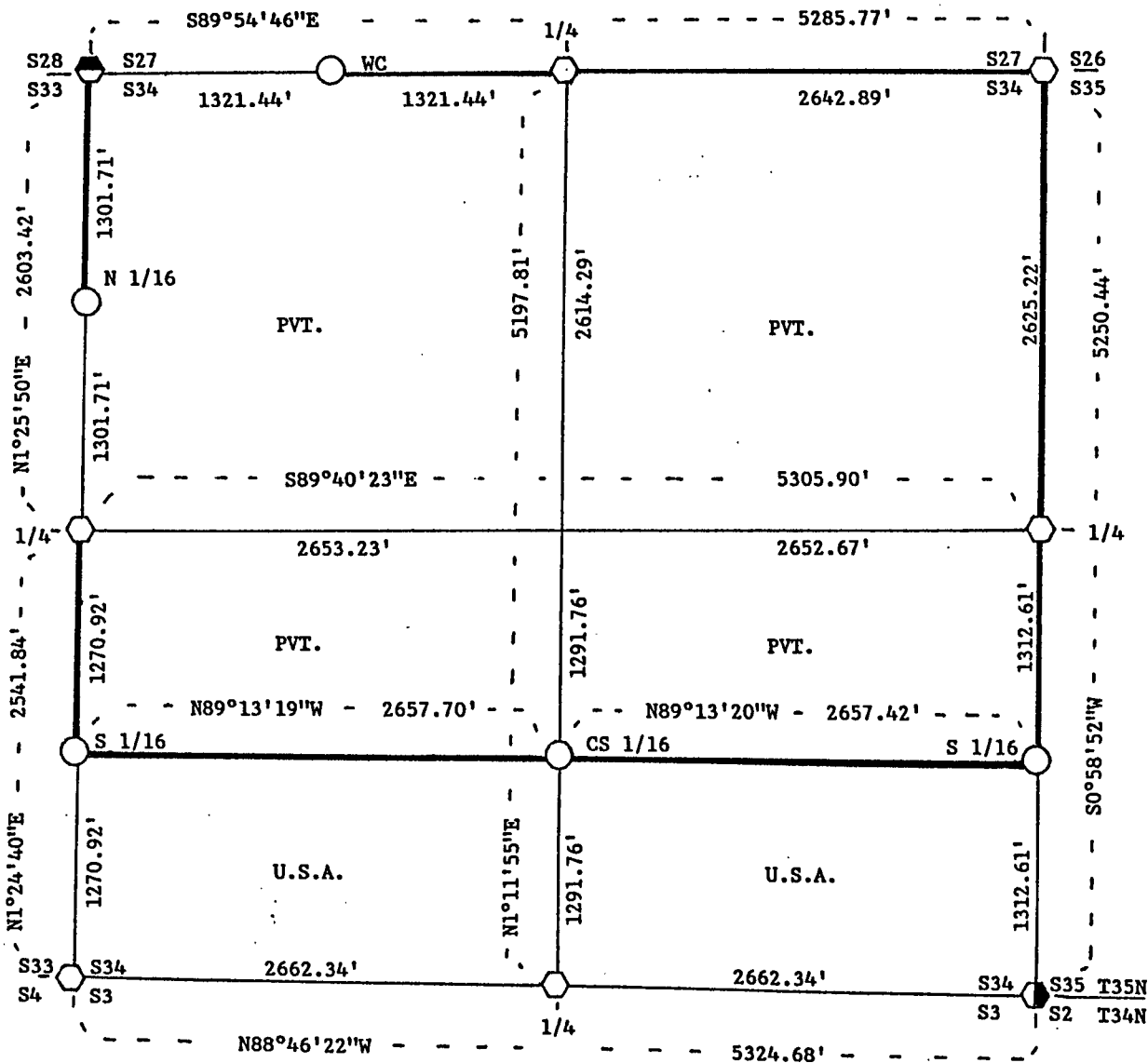


PLAT OF SURVEY FOR CERTIFIED LAND CORNER RESTORATION AND ESTABLISHMENT OF U.S. GOVERNMENT

BEING THE CORNERS FOR THE SOUTH HALF OF THE SOUTHWEST 1/4 AND THE SOUTH HALF OF THE SOUTHEAST 1/4. SECTION 34, T35N, R15E FOURTH PRINCIPAL MERIDIAN FOREST COUNTY, STATE OF WISCONSIN



LEGEND

- Boundary line marked to standard.
- 1" diameter pipe monument, 36" long with an aluminum cap stamped to identify the corner.
- ⬡ 2 1/2" dia. aluminum pipe monument, 36" long with an aluminum cap stamped to identify the corner.
- ⬢ 2" dia. aluminum pipe monument, 30" long with an aluminum cap stamped to identify the corner.
- ⬢ 2" diameter galvanized wrought iron pipe, 5 ft. long filled with concrete with a brass cap stamped to identify the corner.

NOTE: Bearings are referenced to solar observation.

Stock No. 26273

Sheet 2 of 4

SURVEY NOTES

This survey was made by John C. Schulke, a Registered Land Surveyor in the State of Wisconsin, for the U.S. Department of Agriculture, Forest Service. The purpose of the survey was for recovery, establishing, marking and perpetuating the corners and boundary lines of the U.S. Government Land on the perimeter and within Section 34, Township 35 North, Range 15 East, Fourth Principal Meridian, Forest County, Wisconsin.

The Original Government Survey of the township boundary was done by Artemas Curtis in 1857. The Original Government Subdivision survey of this township was done by James McBride in 1859.

The bearings between corner positions are true bearings as determined by reference to solar observations. The accuracy of this survey exceeds the State requirement for closure of 1 in 3,000. Corners recovered or established by this survey are marked as described in the map legend. Each monumented corner is referenced to blazed, scribed, painted and tagged bearing trees. Tie bearings are magnetic, and not corrected for declination.

CORNERS RECOVERED AND RESTORED

1. Section Corner Common To Sections 27, 28, 33 and 34.
Corner monument recovered in place and as described on the Certified Land Corner Restoration form filed in the Forest County Register of Deed's Office, Document #98038, in 1969 by Jean F. Resvick (S-802).
2. Quarter Corner Between Sections 27 and 34.
Found no evidence. Restored by proportionate measurement. Monument placed in a mound of stones.

Corner references:

Sugar Maple	10"	N73°W	37.00 feet
Sugar Maple	4"	N21°W	9.38 feet
Sugar Maple	5"	S26°E	31.62 feet
Sugar Maple	10"	S70°W	21.25 feet
Steel sign post		West	0.8 feet
3. Section Corner Common To Sections 26, 27, 34 and 35.
Corner monument recovered in place and as described on the U.S. Public Land Survey Monument Record form filed in the Forest County Register of Deed's Office, Document #131256, in 1986 by Alan Harrison (S-1651).
4. Quarter Corner Between Sections 34 and 35.
Found no evidence. Restored by proportionate measurement.

Corner references:

Cherry	10"	N72°W	49.09 feet
Basswood	11"	S81°E	7.84 feet
Cherry	12"	S10°E	46.44 feet
Cherry	8"	S75°W	37.13 feet
Steel sign post		North	1.1 feet
5. Section Corner Common To Sections 2, 3, 34 and 35.
Corner monument recovered in place and as described on the U.S. Public Land Survey Monument Record form filed in the Forest County Register of Deed's Office, Document #127215, in 1984 by Alan Harrison (S-1651).
6. Quarter Corner Between Sections 3 and 34.
Corner monument recovered in place and as described on the U.S. Public Land Survey Monument Record form filed in the Forest County Register of Deed's Office, Document #136605, in 1988 by John Schulke (S-1665).



Stock No. 26273

Sheet 3 of 4

7. Section Corner Common To Sections 3, 4, 33 and 34.
Corner monument recovered in place and as described on the U.S. Public Land Survey Monument Record form filed in the Forest County Register of Deed's Office, Document #136604, in 1988 by John Schulke (S-1665).
8. Quarter Corner Between Sections 33 and 34.
Corner monument recovered in place and as described on the Certified Land Corner Restoration form filed in the Forest County Register of Deed's Office, Document #124199, in 1983 by Milo Stefan (S-1558).

CORNERS ESTABLISHED

1. West Sixteenth Corner Between Sections 27 and 34.
Corner position is established at the midpoint and on line between the North Quarter corner and the Northwest Section corner of Section 34. Set a witness corner monument that bears S89°55'E a distance of 190.00 ft. from the corner. The monument placed in a mound of stones.

Witness corner monument references:

Black Ash	10"	S25°E	23.40 feet
Spruce	7"	S83°W	57.89 feet
Steel sign post		West	1.3 feet

2. North Sixteenth Corner Between Sections 33 and 34.
Corner position is established at the midpoint and on line between the West Quarter corner and the Northwest Section corner of Section 34. A 3" dia. existing concrete monument bears N7°17"E a distance of 11.13 feet from the aluminum monument.

Corner references:

Sugar Maple	4"	N12°W	15.22 feet
Sugar Maple	7"	N41°E	4.74 feet
Steel sign post		North	1.5 feet

3. South Sixteenth Corner Between Sections 33 and 34.
Corner position is established at the midpoint and on line between the West Quarter corner and the Southwest Section corner of Section 34. The monument placed in a mound of stones.

Corner references:

Maple	13"	West	46.37 feet
Maple	16"	N21°E	43.00 feet
Steel sign post		North	1.3 feet

4. Center South Sixteenth Corner Of Section 34.
Corner position is established by proportional measurement on the straight line between the South Quarter corner and the Center Quarter corner of Section 34.

Corner references;

Sugar Maple	6"	N25°W	44.33 feet
Sugar Maple	5"	S44°E	31.55 feet
Steel sign post		South	0.6 feet

5. South Sixteenth Corner Between Sections 34 and 35.
Corner position is established at the midpoint and on line between the East Quarter corner and the Southeast Section corner of Section 34.

Corner references:

Maple	9"	N07°E	19.58 feet
Maple	7"	N65°W	42.03 feet
Steel sign post		Southeast	0.7 feet

Stock No. 26273

Sheet 4 of 4

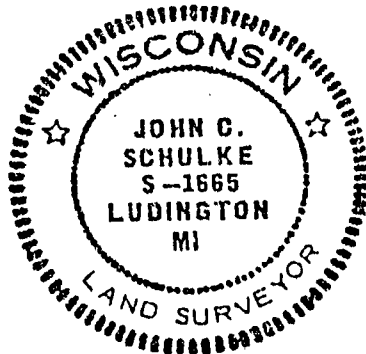
SURVEYOR'S AFFIDAVIT

State of Wisconsin)
County of Forest)^{ss}

I, John C. Schulke, a Cadastral Surveyor, and a Registered Land Surveyor in the State of Wisconsin, hereby certify that I have surveyed and subdivided Section 34, Township 35 North, Range 15 East, Fourth Principal Meridian, State of Wisconsin.

The plat and survey notes herewith are a correct representation of the land surveyed and subdivided. I have surveyed and subdivided said section in accordance with the rules for the survey of the public lands and with the statutes of the State of Wisconsin.

John C. Schulke
4604 So. Pere Marquette Rd.
Ludington, MI 49431
R.L.S. State of Wisconsin
Date of Survey 1989
Certificate S-1665



John C. Schulke
June 8th, 1989

Plat ready for filing:

David B. Staeger
District Ranger

