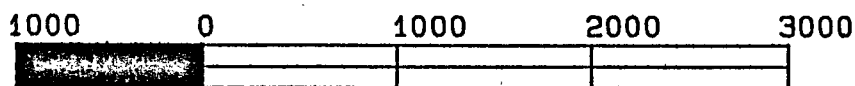
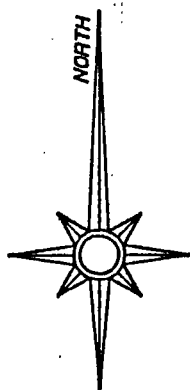


CERTIFIED LAND BOUNDARY ESTABLISHMENT AND CORNER RESTORATION U.S. GOVERNMENT LANDS

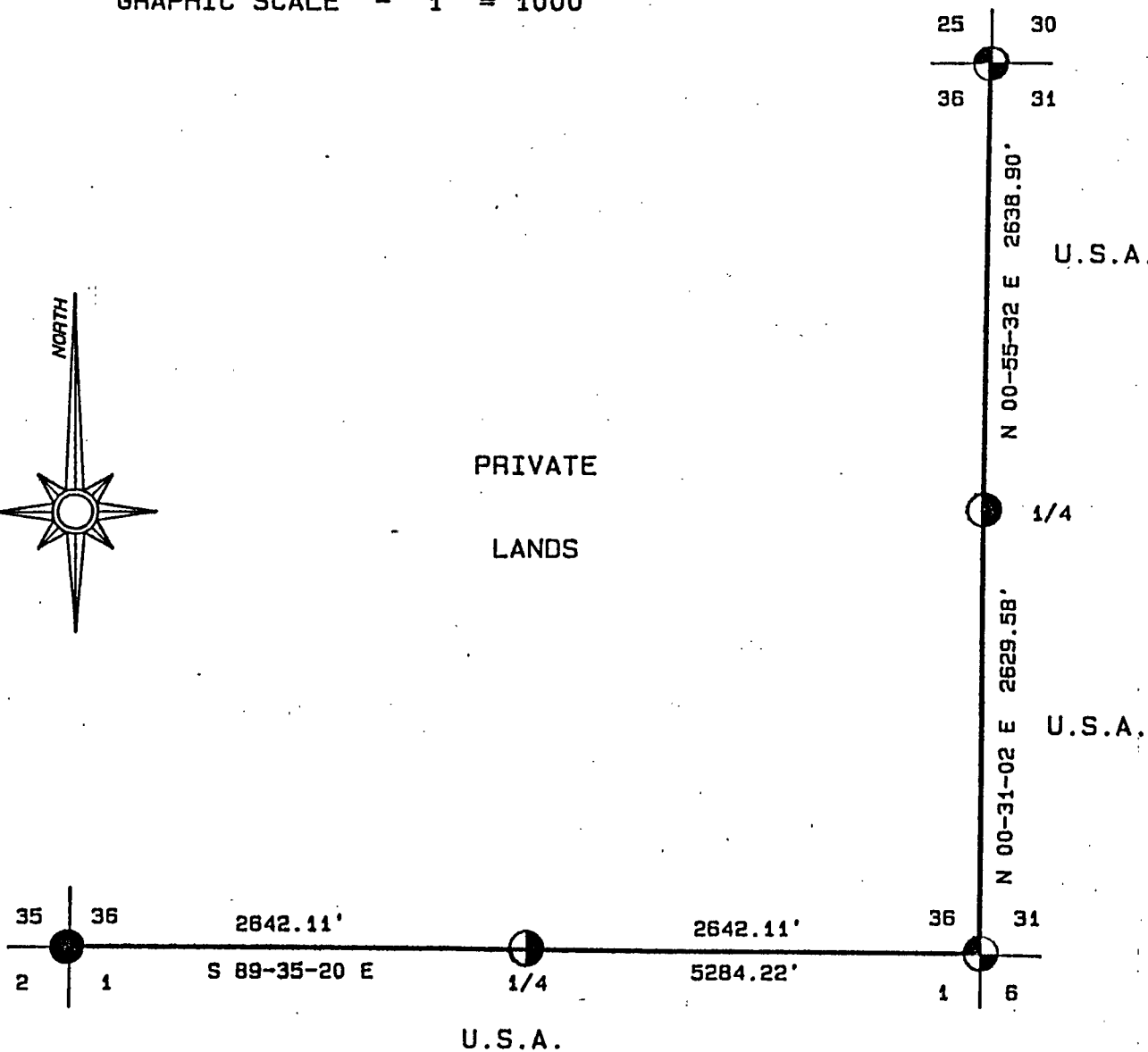
BEING THE BOUNDARY ON THE EAST AND SOUTH LINES OF SECTION 36,
TOWNSHIP 35 NORTH, RANGE 15 EAST, FOURTH PRINCIPAL MERIDIAN,
FOREST COUNTY, WISCONSIN.







GRAPHIC SCALE - 1" = 1000'



PRIVATE
LANDS



LEGEND

-  2" BRASS CAPPED MONUMENT, FOUND IN PLACE.
-  2 1/2" X 36" ALUMINUM MONUMENT, FOUND IN PLACE.
-  2 1/2" X 36" ALUMINUM MONUMENT, SET THIS SURVEY.
-  MARKED BOUNDARY LINE OF U.S. GOVERNMENT LANDS.

Stock No. 26273

Sheet 2 of 3

SURVEY NOTES

This survey was made by the U. S. Department of Agriculture, Forest Service, for the purpose of restoring corners on the perimeter of Section 36, and for locating and marking the boundaries of U. S. Government land on the East and South perimeter of Section 36, Township 35 North, Range 15 East, 4th Principal Meridian, Forest County, Wisconsin.

The original government subdivision survey of this township was made in 1859.

The corner positions recovered, restored and established by this survey are marked by the monument described in the map legend.

The corner positions established were located to an accuracy of one part in 3000.

The bearings between corner positions are true bearings as determined by solar observations.

The field notes of this survey and a copy of this plat are on file in the Forest Supervisor's Office at Rhinelander, Wisconsin.

CORNERS RECOVERED OR RESTORED

1. Corner Common to Sections 25, 36, 30, 31, T.35 N., R.15-16 E.
Corner recovered and monumented by Bill Cochran, R.L.S. Certificate on file in Forest County.
2. Corner Common to Sections 1, 6, 31, 36, T.34, 35 N., R. 15-16 E.
Corner recovered and monumented by Mile Stefan, R.L.S. Certificate on file in Forest County.
3. Corner Common to Sections 1, 2, 35, 36, T.34-35 N., R.15 E.
Corner recovered and monumented by Jean Resvick, R.L.S. Certificate on file in Forest County.
4. Quarter Corner to Sections 36, 31, T.35 N., R.15-16 E.
Corner position found marked by 5" squared cedar posts.
References:

1. Red Maple	4"	N.3E.	24.88 feet
2. Balsam	7"	S.45E.	3.32 feet
3. "X" on Rock	4½'x5'x6'	N.26W.	36.75 feet
4. Steel sign post		South	0.60 feet

5. Quarter Corner to Sections 1, 36, T.34-35 N., R.15E.
Corner position restored by single proportionate measure.
References:

1. Sugar	8"	S.49E.	24.27 feet
2. Sugar	7"	S.61W.	59.53 feet
3. Sugar	6"	N.52W.	48.45 feet
4. Steel sign post		East	1.77 feet

Stock No. 26273

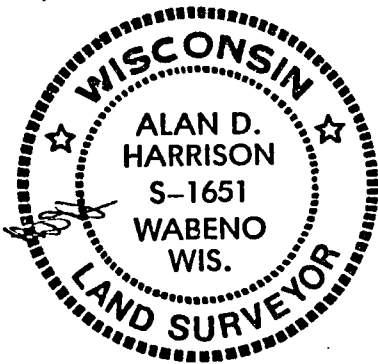
Sheet 3 of 3

SURVEYOR'S AFFIDAVIT

State of Wisconsin)
 County of Forest) SS

I, Alan D. Harrison, Land Surveyor, USDA, Forest Service and a Registered Land Surveyor in the State of Wisconsin, do hereby certify that I have surveyed Section 36, Township 35 North, Range 15 East, Fourth Principal Meridian, State of Wisconsin.

The plat map and the notes herewith are a correct representation of the land surveyed and divided. I have surveyed and subdivided said section in accordance with the rules for survey of the public lands and with the statutes of the State of Wisconsin.



Alan D. Harrison
 Land Surveyor, USDA, Forest Service
 R.L.S. Number S-1651
 State of Wisconsin

Plat ready for filing:

Dale B. Steege
 District Ranger

Date of Survey: 1988

