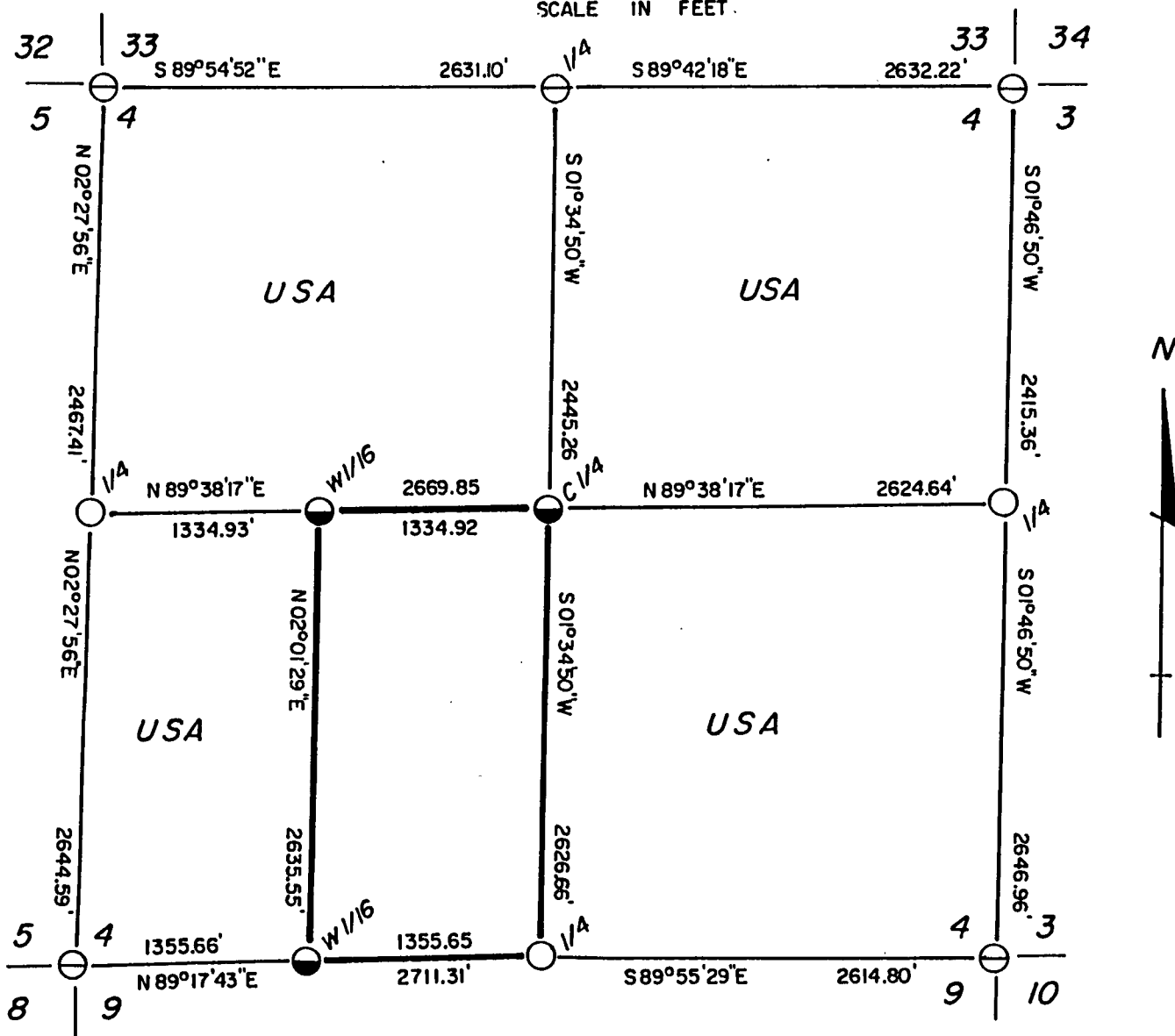
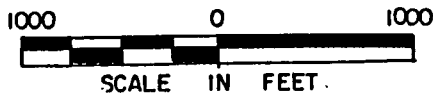




# PLAT OF SURVEY U.S. GOVERNMENT LAND

Being the NW 1/4, NE 1/4, SE 1/4 and the W1/2-SW1/4 of Section 4,  
Township 35 North, Range 16 East, Fourth Principal Meridian  
Forest County, Wisconsin



## LEGEND

- ⊖ = FOUND 2" DIAMETER ALUMINUM MONUMENT, WITH CAP STAMPED FOR CORNER
- = SET 2" DIAMETER ALUMINUM MONUMENT, 36" LONG, WITH CAP STAMPED FOR CORNER
- ◐ = SET 1" DIAMETER ALUMINUM MONUMENT, 36" LONG, WITH CAP STAMPED FOR CORNER
- = MARKED BOUNDARY LINES OF U.S. GOVERNMENT LANDS



Stock No. 26273

Sheet two of four

SURVEY NOTES

This survey was made by AARON ASSOCIATES of Oconto Falls, Wisconsin, under contract with the U.S. Department of Agriculture, Forest Service, for the purpose of restoring and establishing corners on the perimeter of Section 4, for establishing subdivisional corners within Section 4, and for locating and marking the boundaries of U.S. Government lands on their perimeter and within Section 4, Township 35 North, Range 16 East, Fourth Principal Meridian, Forest County, Wisconsin.

The U.S. Government lands in this Section were acquired in 1935, 1940 & 1943.

The original Government subdivision survey of this Township was made in 1858.

The corner positions recovered, restored, and established by this survey are marked by monuments described in the map legend.

The corner positions established were located to an accuracy of one part in 5000.

The bearings between corner positions are true bearings, as determined by solar observations.

The field notes of this survey and a copy of this plat are on file in the Forest Supervisor's Office at Rhinelander, Wisconsin.

CORNERS RECOVERED AND RESTORED1) Corner to Sections 4-5-8-9, T35N, R16E.

Corner was found, monumented by Milo Stefan, RLS. Corner ties available in USFS field book for this corner.

2) Corner to Sections 4-5-32-33, T35 & 36N, R16E.

Corner was found, monumented by Milo Stefan, RLS. Certificate on file in Forest County Courthouse.

3) Corner to Sections 3-4-33-34, T35 & 36N, R16E.

Corner was found, monumented by Milo Stefan, RLS. Certificate on file in Forest County Courthouse.

4) Corner to Sections 3-4-9-10, T35N, R16E.

Corner was found, monumented by Alan Harrison, RLS. Certificate on file in Forest County Courthouse.

5) Quarter Corner to Sections 4-33, T35 & 36N, R16E.

Corner was found, monumented by Milo Stefan, RLS. Certificate on file in Forest County Courthouse.

## Stock No. 26273

Sheet three of four

6) Quarter Corner to Sections 4-9, T35N, R16E.

Corner was found, monumented by a three foot long section of RR track in a pile of stone. Evidence of the two bearing trees were searched for and found from this rail, which was accepted and monumented as the corner. Corner references:

Maple	8"	N45°E	5.64'
Maple	5"	S13°E	21.04'
White Birch	17"	S86°W	42.85'
Maple	6"	N13°W	30.19'
Steel Sign Post		West	4.6'

7) Quarter Corner to Sections 3-4, T35N, R16E.

Corner was determined lost after a diligent search in recently slashed and disturbed timber cutting proved unsuccessful. It was set at single proportionate measurement between opposite section corners, which fit stream calls to the north within one chain. Corner references:

Balsam Fir	4"	N27°E	44.90'
Balsam Fir	4"	S53°E	60.30'
Balsam Fir	4"	N86°E	95.22'
Balsam Fir	6"	S55°W	82.68'
Steel Sign Post		West	0.70'

8) Quarter Corner to Sections 4-5, T35N, R16E.

Corner was determined lost after a diligent search for Hemlock stumps as bearing tree evidence proved to be unsuccessful. The corner was set at single proportionate measurement between opposite section corners. Corner references:

White Pine	16"	N46°E	45.08'
Tamarack	14"	S63°E	29.90'
Hemlock	6"	S02°E	18.98'
Yellow Birch	6"	S87°W	5.25'
Steel Sign Post		North	0.50'

CORNERS ESTABLISHED1) Center Quarter Corner to Section 4, T35N, R16E.

Corner was set at the straight line intersection point of the north-south and east-west quarter section lines of Section 4. Corner references:

Maple	9"	S22°E	10.15'
Yellow Birch	11"	S48°W	12.24'
Steel Sign Post		West	2.7'
Iron Rail (Occupied C 1/4)		N49°W	31.40'



Stock No. 26273

Sheet four of four

2) Center West Sixteenth Corner to Section 4, T35N, R16E.

Corner was set at proportionate distance between the west quarter and center quarter corners of Section 4. Corner references:

Maple	12"	N45°E	5.60'
Maple	9"	S34°E	7.98'
Iron Rail (Occupied 1/16)		N01°E	75.03'
Steel Sign Post		East	0.7'

3) West Sixteenth Corner to Sections 4-9, T35N, R16E.

Corner was set at proportionate distance and on line between the southwest corner and south quarter corner of Section 4. Corner references:

Ash	8"	N28°E	15.61'
Ash	10"	South	39.55'
Steel Sign Post		North	0.6'

SURVEYOR'S AFFIDAVIT

STATE OF WISCONSIN)<sup>SS</sup>  
 OCONTO COUNTY )

I, Kim H Pritzlaff, Registered Land Surveyor in the State of Wisconsin, hereby certify: that I have surveyed and subdivided Section 4, Township 35 North, Range 16 East, Fourth Principal Meridian, Forest County, Wisconsin;

That the field notes and Plat herewith are a correct representation of the land surveyed and subdivided; and that I have surveyed and subdivided said Section in accordance with the rules for survey of the Public Lands and with the Statutes of the State of Wisconsin.

Date of Survey: 1992



*Kim H Pritzlaff*  
 \_\_\_\_\_  
 Kim H Pritzlaff, RLS No. 1259  
 AARON ASSOCIATES  
 Oconto Falls, Wisconsin

Plat ready for filing:

*Sue Vap*  
 \_\_\_\_\_  
 District Ranger

