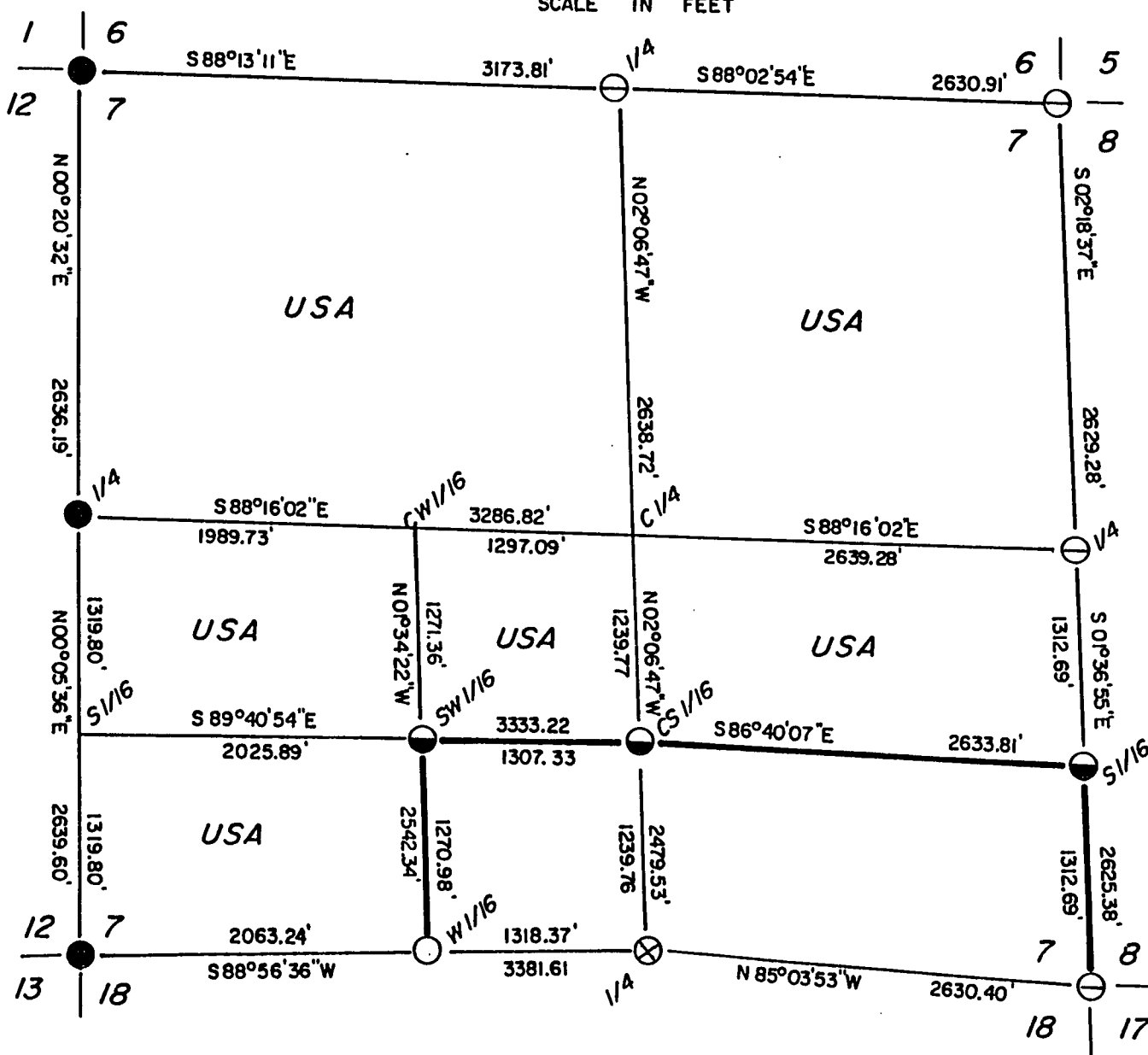
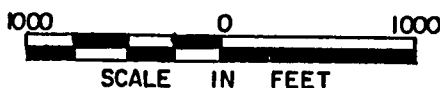


PLAT OF SURVEY U.S. GOVERNMENT LAND

Being the NE 1/4 - SW 1/4, West 1/2 - SW 1/4, North 1/2 - SE 1/4,
NW 1/4, and the NE 1/4 of Section 7,
Township 35 North, Range 16 East, Fourth Principal Meridian,
Forest County, Wisconsin



LEGEND

- = FOUND 2" DIAMETER IRON PIPE WITH BRASS CAP STAMPED FOR CORNER
- ⊖ = FOUND 2" DIAMETER ALUMINUM MONUMENT WITH CAP STAMPED FOR CORNER
- ⊗ = SET CONCRETE NAIL AND WASHER WITH 2" DIAMETER ALUMINUM MONUMENT, 36" LONG WITH CAP STAMPED AS REFERENCE MONUMENT
- = SET CONCRETE NAIL AND WASHER WITH 1" DIAMETER ALUMINUM MONUMENT, 36" LONG WITH CAP STAMPED AS WITNESS CORNER
- ◐ = SET 1" DIAMETER ALUMINUM MONUMENT, 36" LONG WITH CAP STAMPED FOR CORNER
- = MARKED BOUNDARY LINES OF U.S. GOVERNMENT LANDS

Stock No. 26273

Sheet two of four

SURVY NOTES

This survey was made by AARON ASSOCIATES of Oconto Falls, Wisconsin, under contract with the U.S. Department of Agriculture, Forest Service, for the purpose of restoring and establishing corners on the perimeter of Section 7, for establishing subdivisional corners within Section 7, and for locating and marking the boundaries of U.S. Government lands on their perimeter and within Section 7, Township 35 North, Range 16 East, Fourth Principal Meridian, Forest County, Wisconsin.

The U.S. Government lands in this Section were acquired in 1990.

The original Government subdivision survey of this Township was made in 1858.

The corner positions recovered, restored, and established by this survey are marked by monuments described in the map legend.

The corner positions established were located to an accuracy of one part in 5000.

The bearings between corner positions are true bearings, as determined by solar observations.

The field notes of this survey and a copy of this plat are on file in the Forest Supervisor's Office at Rhinelander, Wisconsin.

CORNERS RECOVERED AND RESTORED

- 1) Corner to Sections 12-13-7-18, T35N, R15 & 16E.
Corner was found, monumented by Jean Resvick, RLS. Certificate on file in Forest County Courthouse.
- 2) Corner to Sections 1-12-6-7, T35N, R15 & 16E.
Corner was found, monumented by Jean Resvick, RLS. Certificate on file in Forest County Courthouse.
- 3) Corner to Sections 5-6-7-8, T35N, R16E.
Corner was found, monumented by Alan Harrison, RLS. Certificate on file in Forest County Courthouse.
- 4) Corner to Sections 7-8-17-18, T35N, R16E.
Corner was found, monumented by Milo Stefan, RLS. Certificate on file in Forest County Courthouse.
- 5) Quarter Corner to Sections 12-7, T35N, R15 & 16E.
Corner was found, monumented by Jean Resvick, RLS. Certificate on file in Forest County Courthouse.
- 6) Quarter Corner to Sections 6-7, T35N, R16E.
Corner was found, monumented by Alan Harrison, RLS. Certificate on file in Forest County Courthouse.

Stock No. 26273

Sheet three of four

7) Quarter Corner to Sections 7-8, T35N, R16E.

Corner was found, monumented by Alan Harrison, RLS. Certificate on file in Forest County Courthouse.

8) Quarter Corner to Sections 7-18, T35N, R16E.

Corner was restored from road center-line and tie distance from CCC road call. Set corner at proportionate distance between southwest and southeast corners of Section 7 and in road center-line. Position fit CCC call within 1/2 chain and swamp call west within one chain. Corner references:

Reference Monument		North	25.00'
Cedar	11"	S12°E	78.14'
Cedar	8"	S52°W	92.80'
Ash	6"	N18°W	53.92'
Steel Sign Post		North	25.70'

CORNERS ESTABLISHED1) East Sixteenth Corner to Sections 7-8, T35N, R16E.

Set corner at midpoint and on line between the east quarter and southeast corners of Section 7. Corner references:

Balsam Fir	9"	N44°E	19.30'
Maple	7"	S72°E	17.83'
Steel Sign Post		West	0.50'

2) Center South Sixteenth Corner to Section 7, T35N, R16E.

Set corner at midpoint and on line between the center quarter and south quarter corners of Section 7. Corner falls in 10" Maple tree. Corner references:

Witness Corner		West	2.00'
Maple	5"	S56°E	38.35'
Steel Sign Post		West	1.00'

3) Southwest Sixteenth Corner to Section 7, T35N, R16E.

Set corner at straight line intersection point of sixteenth lines in the southwest quarter of Section 7. Corner references:

Maple	5"	N36°E	15.32'
Maple	11"	S70°W	32.67'
Steel Sign Post		South	0.25'

Stock No. 26273

Sheet four of four

4) West Sixteenth Corner to Sections 7-18, T35N, R16E.

Set corner at proportionate distance on line between the southwest and south quarter corners of Section 7. Corner references:

Witness Corner		North	30.00'
Tamarack	7"	N38°E	76.79'
Cedar	7"	S19°W	57.96'
Steel Sign Post		North	30.4'

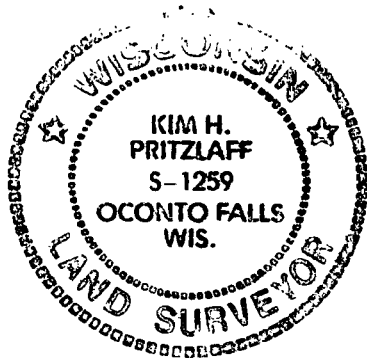
SURVEYOR'S AFFIDAVIT

STATE OF WISCONSIN)ss
 OCONTO COUNTY)

I, Kim H Pritzlaff, Registered Land Surveyor in the State of Wisconsin, hereby certify: That I have surveyed and subdivided Section 7, Township 35 North, Range 16 East, Fourth Principal Meridian, Forest County, Wisconsin;

That the field notes and Plat herewith are a correct representation of the land surveyed and divided; and that I have surveyed and subdivided said Section in accordance with the rules for survey of the Public Lands and with the Statutes of the State of Wisconsin.

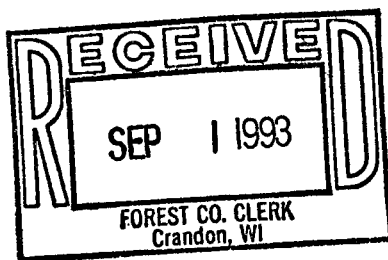
Date of Survey: 1992



Kim H Pritzlaff

 Kim H Pritzlaff, RLS No. 1259
 AARON ASSOCIATES
 Oconto Falls, Wisconsin

Plat ready for filing:



Sue Vap

 District Ranger