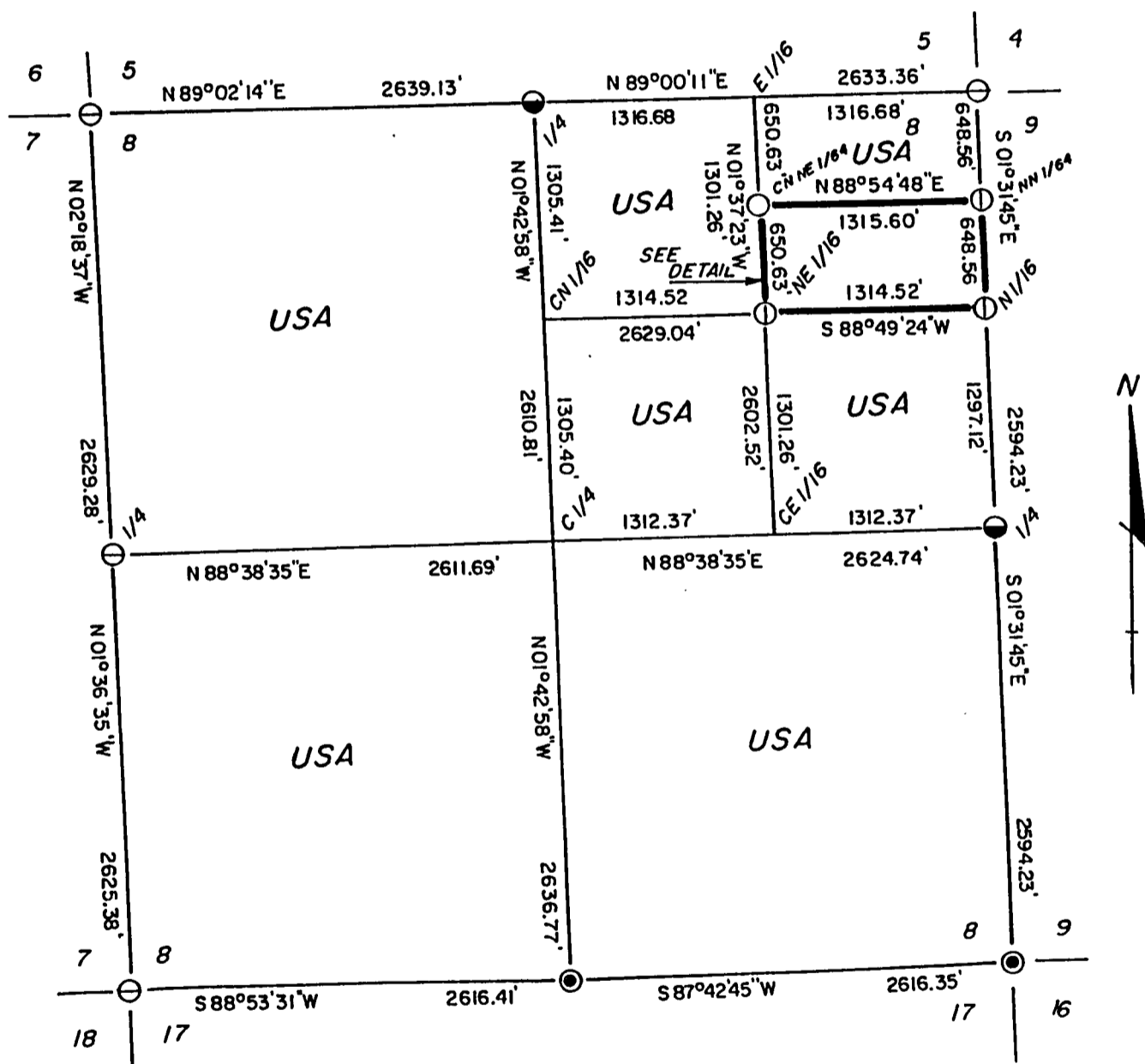
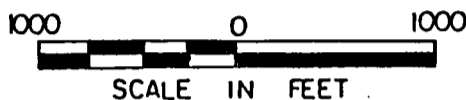


PLAT OF SURVEY U.S. GOVERNMENT LAND

Being the NW 1/4-NE 1/4, S 1/2 -NE 1/4, N 1/2 -NE 1/4-NE 1/4
NW 1/4, SW 1/4 and the SE 1/4 of Section 8,
Township 35 North, Range 16 East, Fourth Principal Meridian
Forest County, Wisconsin



LEGEND

- ⊖ = FOUND ALUMINUM MONUMENT WITH CAP STAMPED FOR CORNER
- ⊙ = SET RR SPIKE WITH 2" DIAMETER ALUMINUM MONUMENT, 36" LONG WITH CAP STAMPED REFERENCE MONUMENT
- = SET 2" DIAMETER ALUMINUM MONUMENT, 36" LONG WITH CAP STAMPED FOR CORNER
- ⊕ = SET 1" DIAMETER ALUMINUM MONUMENT, 36" LONG WITH CAP STAMPED FOR CORNER
- = SET 1" DIAMETER ALUMINUM MONUMENT, 60" LONG WITH CAP STAMPED FOR CORNER
- = MARKED BOUNDARY LINES OF U.S. GOVERNMENT LAND

Stock No. 26273

Sheet three of five

SURVEY NOTES

This survey was made by AARON ASSOCIATES of Oconto Falls, Wisconsin, under contract with the U.S. Department of Agriculture, Forest Service, for the purpose of restoring, and establishing corners on the perimeter of Section 8, for establishing subdivisional corners within Section 8, and for locating and marking the boundaries of U.S. Government land on their perimeter and within Section 8, Township 35 North, Range 16 East, Fourth Principal Meridian, Forest County, Wisconsin.

The U.S. Government land in this section was acquired in 1936, 1937, 1942, and 1967.

The original government survey of this township was made in 1858.

The corner positions recovered, restored, and established by this survey are marked with monuments described in the map legend.

The corner positions established were located to an accuracy of one part in 5000.

The bearings between corner positions are true bearings as determined by solar observations.

The field notes of this survey and a copy of the plat map are on file in the Forest Supervisor's Office at Rhinelander, Wisconsin.

CORNERS RECOVERED AND RESTORED

- 1) Section corner to Sections 7-8-17-18, T35N, R16E
Corner was recovered, set by Milo Stefan, RLS.
Certificate on file in the Forest County Courthouse.
- 2) Section Corner to Sections 5-6-7-8, T35N, R16E
Corner was recovered, set by Alan Harrison, RLS.
Certificate on file in the Forest County Courthouse.
- 3) Section Corner to Sections 4-5-8-9, T35N, R16E
Corner was recovered, set by Milo Stefan RLS. Corner ties available in USFS field book for this corner.
- 4) Section Corner to Sections 8-9-16-17, T35N, R16E
Corner was restored using the road centerline and proportionate distances between the southwest corner of section 8 and the south quarter corner of section 9. Natural feature calls for this corner did not fit well. Corner references:

Balsam Fir	8"	N30W	55.50 ft.
Ash	7"	S32W	67.14 ft.
Cedar	9"	South	95.01 ft.
Aluminum Reference Monument		North	25.00 ft.
Steel Sign Post		North	25.40 ft.

Stock No. 26273

Sheet four of five

5) Quarter Corner to Sections 8-17, T35N, R16E

Corner was restored from road centerline and proportionate distance between the southwest and southeast corners of section 8. Corner references:

White Birch	11"	S44E	58.10 ft.
Maple	6"	S10E	42.89 ft.
Spruce	15"	N17W	125.34 ft.
Aluminum Reference Monument		North	25.00 ft.
Steel Sign Post		North	25.50 ft.

6) Quarter Corner to Sections 7-8, T35N, R16E

Corner was recovered, set by Alan Harrison, RLS. Certificate on file in the Forest County Courthouse.

7) Quarter Corner to Sections 5-8, T35N, R16E

Corner was restored from an old squared wood post in rock cairn with CCC tag facing the corner position. Found Hemlock stump remains S10W at a distance of 20 ft. Accepted post and monumented same. Corner references:

Maple	7"	N09E	19.50 ft.
Ash	5"	S61E	27.39 ft.
Ironwood	6"	S13E	22.12 ft.
Ash	9"	N55W	19.90 ft.
Steel Sign Post		N20W	0.65 ft.

8) Quarter Corner to Sections 8-9, T35N, R16E

Corner was determined to be lost after a diligent search in heavily logged Popple slash area proved unsuccessful. Corner was set at single proportionate measure. Corner references:

1" Iron Pipe with Steel Sign Post		N55E	34.60 ft.
1" Iron Pipe with Steel Sign Post		S62E	50.00 ft.
1" Iron Pipe with Steel Sign Post		"	100.00 ft.
1" Iron Pipe with Steel Sign Post		"	150.00 ft.
Steel Sign Post		S55W	0.50 ft.

CORNERS ESTABLISHED1) North Sixteenth Corner to Sections 8-9, T35N, R16E

This corner was set at midpoint and on line between the northeast and east quarter corners of section 8. Corner references:

Ash	8"	N70E	3.10 ft.
Ash	9"	S26E	26.03 ft.
Steel Sign Post		West	0.50 ft.

2) Northeast Sixteenth Corner to Section 8, T35N, R16E

This corner was set at the straight line intersection point of the north-south and east-west sixteenth lines in the northeast quarter of section 8. Corner references:

Ash	8"	East	23.70 ft.
Ash	9"	S12W	25.00 ft.
Steel Sign Post		East	0.60 ft.

Stock No. 26273

Sheet five of five

3) Center North-Northeast One Sixty-fourth Corner to Section 8, T35N, R16E

Set this corner position at midpoint and on line between the northeast sixteenth and the east sixteenth corners of section 8. Corner references:

Maple	5"	N15E	15.13 ft.
Maple	8"	N69W	14.56 ft.
Steel Sign Post		South	1.25 ft.

4) North-North One Sixty-fourth Corner to Sections 8-9, T35N, R16E

Set this corner at midpoint and on line between the north sixteenth and northeast corners of section 8. Corner references:

Ash	7"	S88E	10.13 ft.
Ash	6"	N40W	8.61 ft.
Steel Sign Post		South	0.60 ft.


SURVEYOR'S AFFIDAVIT

STATE OF WISCONSIN)
OCONTO COUNTY)SS

I, Kim H Pritzlaff, Registered Land Surveyor in the State of Wisconsin hereby certify: that I have surveyed and subdivided section 8, Township 35 North, Range 16 East, Fourth Principal Meridian, Forest County, Wisconsin.

The notes and plat map herewith are a correct representation of the land surveyed and subdivided. I have surveyed and subdivided said section in accordance with the rules for survey of the public lands and with the Statutes of the State of Wisconsin.

Date of survey: 1993



Kim H Pritzlaff, RLS No. 1259
AARON ASSOCIATES
Oconto Falls, Wisconsin

Plat ready for filing:


District Ranger
