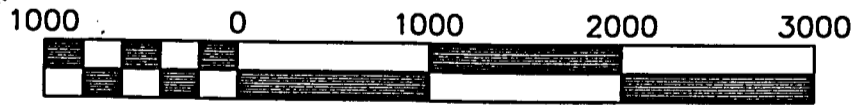
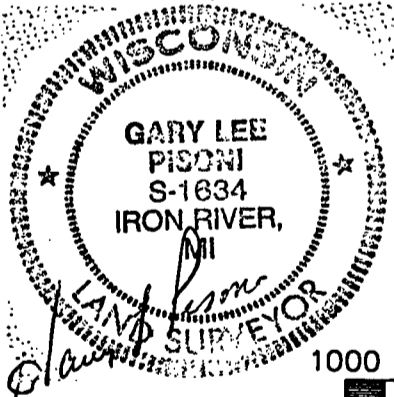
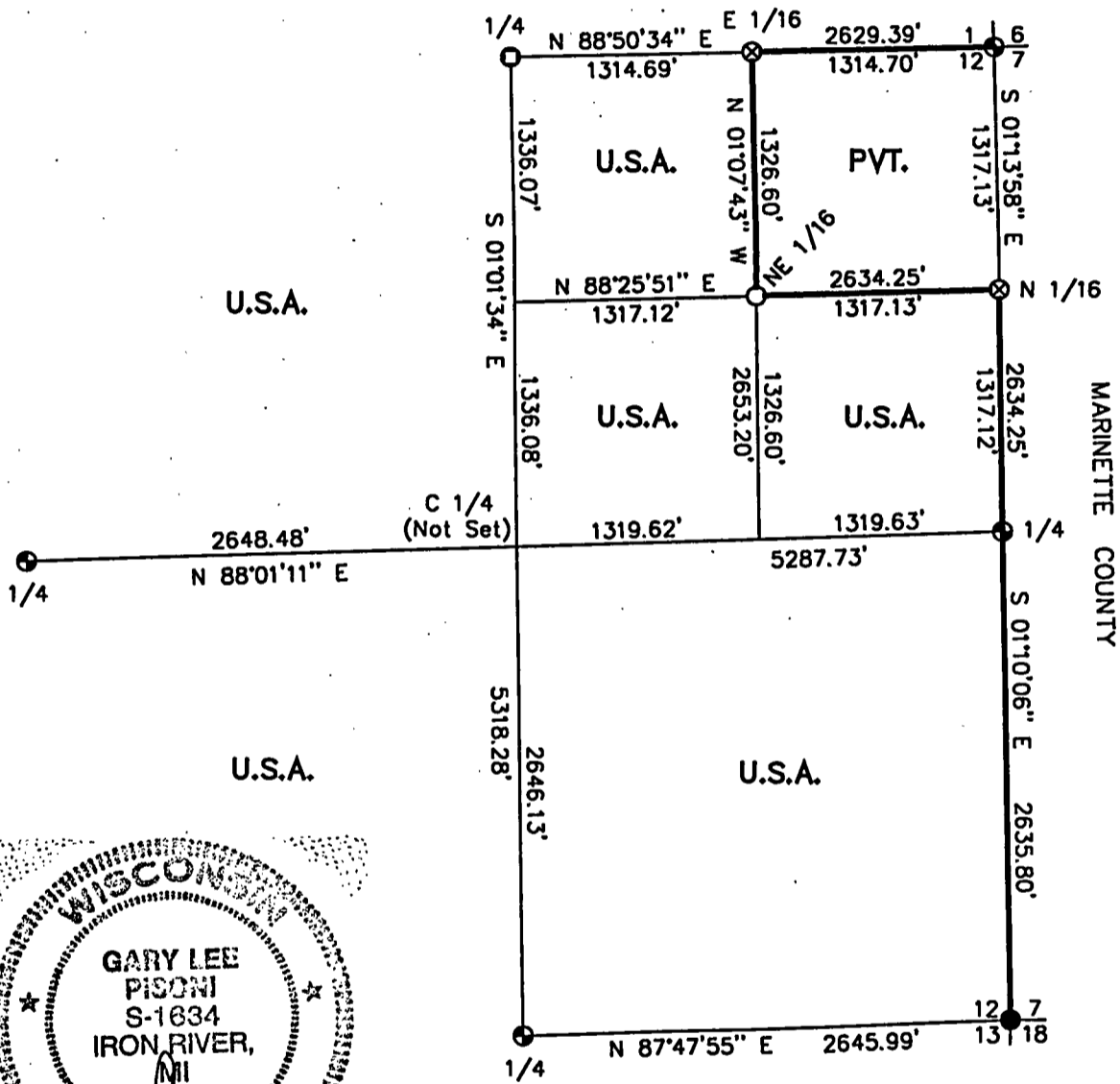


PLAT OF SURVEY

U.S. GOVERNMENT LANDS

Being the NW 1/4; the SW 1/4; the SE 1/4; the W 1/2 and the SE 1/4 of the NE 1/4; Section 12, Township 35 North, Range 16 East, Fourth Principal Meridian, Forest County, Wisconsin



Scale 1" = 1000'

LEGEND

- EXISTING 2" DIAMETER IRON PIPE WITH BRASS CAP STAMPED FOR CORNER
- EXISTING 4" DIAMETER BRASS CAPPED MONUMENT STAMPED FOR CORNER
- ⊙ EXISTING 2 1/2" DIAMETER ALUMINUM MONUMENT WITH CAP STAMPED FOR CORNER
- 1"X36" ALUMINUM MONUMENT WITH CAP STAMPED FOR CORNER, SET THIS SURVEY
- ⊗ 1"X60" ALUMINUM MONUMENT WITH CAP STAMPED FOR CORNER, SET THIS SURVEY
- MARKED BOUNDARY LINES OF U.S. GOVERNMENT LANDS

SURVEY NOTES

This survey was made by Gary L. Pisoni of Iron River, Michigan under contract with the U.S. Department of Agriculture, Forest Service for the purpose of establishing subdivisional corners within Section 12, and for locating and marking the boundaries of the U.S. Government lands on their perimeter and within Section 12, Township 35 North, Range 16 East, 4th Principal Meridian, Forest County, WI.

This survey is based on U.S.D.A., U.S. Forest Service GPS survey control completed in 1998 and the resulting sectional subdivision therefrom.

The U.S. Government lands in Section 12 were acquired in 1935 and 1936.

The original township line survey was completed by Artemas Curtis in 1857.
The original township subdivision was completed by James Mcbride in 1858.

The corner positions recovered, restored, and established by this survey are marked by the monuments described in the plat legend.

The corner positions established were located to an accuracy of one part in 3000.

The field notes and a copy of this plat are on file in the Forest Supervisor's office at Rhinelander, WI

Wisconsin North Zone Coordinates were computed by the U.S.D.A. from GPS observations and are based on 1983 North American datum.

The bearings between corner positions are grid bearings based on the Wisconsin North Zone State Plane Coordinate System.

Conversions between grid bearings and true bearings are performed by the use of the following algebraic formula: True bearings - Convergence angle = Grid bearing. (Close attention to the algebraic sign must be observed, ie: +/- of the convergence angle).

Ground distances are shown on the Plat map. Conversion between Ground distance and Grid distance is performed by the following formula:

$$\text{Grid distance} / (\text{Grid Scale Factor} \times (20,906,000 / (20,906,000 + \text{Mean Elev.}))) = \text{Ground Distance}$$

COORDINATE VALUES ON 1983 N.A.D.

<u>Corner Code</u>	<u>North Latitude</u>	<u>West Longitude</u>	<u>State Plane Coordinates</u>		<u>Convergence Angle</u>	<u>Scale Factor</u>
			<u>North</u>	<u>East</u>		
SE	45-31'-15.84"	88-25'-32.99"	133228.438	2371980.614	01-08-08.02"	1.000008590
N 1/4	45-32'-07.85"	88-26'-10.01"	138443.954	2369241.489	01-07'-41.31"	1.000005801
NE	45-32'-07.87"	88-25'-33.07"	138497.055	2371870.206	01-08'-07.95"	1.000005800
S 1/4	45-31'-15.35"	88-26'-10.14"	133126.799	2369336.715	01-07'-41.21"	1.000008616
W 1/4	45-31'-41.08"	88-26'-47.27"	135680.853	2366642.587	01-07'-14.43"	1.000007228
E 1/4	45-31'-41.86"	88-25'-33.01"	135863.552	2371926.877	01-08'-08.00"	1.000007187
C 1/4	45-31'-41.47"	88-26'-10.08"	135772.367	2369289.340	01-07'-41.26"	1.000007207
E 1/16	45-32'-07.86"	88-25'-51.54"	138470.504	2370555.841	01-07'-54.63"	1.000005800
N 1/16	45-31'-54.86"	88-25'-33.04"	137180.300	2371898.541	01-08'-07.98"	1.000006491
NE 1/16	45-31'-54.76"	88-25'-51.54"	137144.234	2370581.969	01-07'-54.63"	1.000006497

CORNERS RECOVERED OR RESTORED

- 1) Section corner common to Sections 1, 12, T35N, R16E, and 6, 7, T35N, R17E.
Corner found monumented by Alan Harrison, RLS. Certificate on file in Forest County.
- 2) Quarter corner common to Sections 1 and 12, T35N, R16E.
Corner found monumented by Jean Resvick, RLS. Certificate on file in Forest County.
- 3) Quarter corner common to Sections 12, T35N, R16E and 7, T35N, R17E.
Corner found monumented by Alan Harrison, RLS. Certificate on file in Forest County.
- 4) Quarter corner common to Sections 11 and 12, T35N, R16E.
Corner found monumented by Kim Pritzlaff, RLS. Certificate on file in Forest County.
- 5) Section corner common to Sections 12, 13, T35N R16E and 7, 18, T35N, R17E.
Corner found monumented by Gould, RLS. Certificate on file.
- 6) Quarter corner common to Sections 12 and 13, T35N, R16E.
Corner found monumented by Kim Pritzlaff, RLS. Certificate on file in Forest County.

CORNERS ESTABLISHED

East One-Sixteenth Corner to Sections 1 and 12.

Corner position established midpoint and on line between the northeast corner and the north quarter corner of Section 12.

Corner References:

Black Ash	5"	N 82°E	5.93 feet
Black Ash	6"	S 71°W	14.60 feet
Cedar	8"	N 40°W	14.74 feet
Steel Sign Post		South	0.60 feet

Northeast One-Sixteenth Corner to Section 12

Corner established at the intersection of straight lines between opposing one-sixteenth corner positions on the perimeter of the Northeast quarter of Section 12.

Corner References:

Balsam	9"	N 82°E	34.32 feet
Spruce	7"	S 13°E	23.74 feet
Black Cherry	12"	N 55°W	35.71 feet
Steel Sign Post		East	0.85 feet

North One-Sixteenth Corner to Sections 7 and 12.

Corner position established midpoint and on line between the northeast corner and the east quarter corner of Section 12.

Corner References:

Cedar	14"	N 66°E	30.00 feet
Cedar	9"	S 08°E	35.86 feet
Cedar	10"	N 10°W	19.79 feet
Steel Sign Post		West	0.90 feet

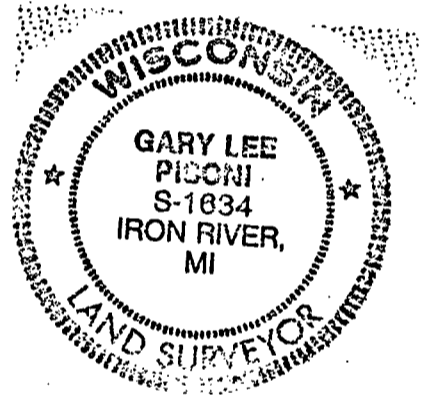
SURVEYOR'S AFFIDAVIT

State of Wisconsin]
County of Forest] SS

I, Gary L. Pisoni, a Registered Land Surveyor in the State of Wisconsin, do hereby certify that I have surveyed and subdivided Section 12, Township 35 North, Range 16 East, Fourth Principal Meridian, Forest County, Wisconsin under contract with the U.S.D.A. Forest Service using the section dimensions and subdivision data as provided by the Forest Service.

The Plat Map and notes herewith are a correct representation of the land surveyed and subdivided. I have surveyed and subdivided said section in accordance with the rules for survey of the public lands and with the statutes of the State of Wisconsin.

Gary L. Pisoni 12-8-98
Gary L. Pisoni R.L.S. No. S-1634
Iron River, Michigan



Plat ready for filing:

[Signature] 3-18-1999
District Ranger

