

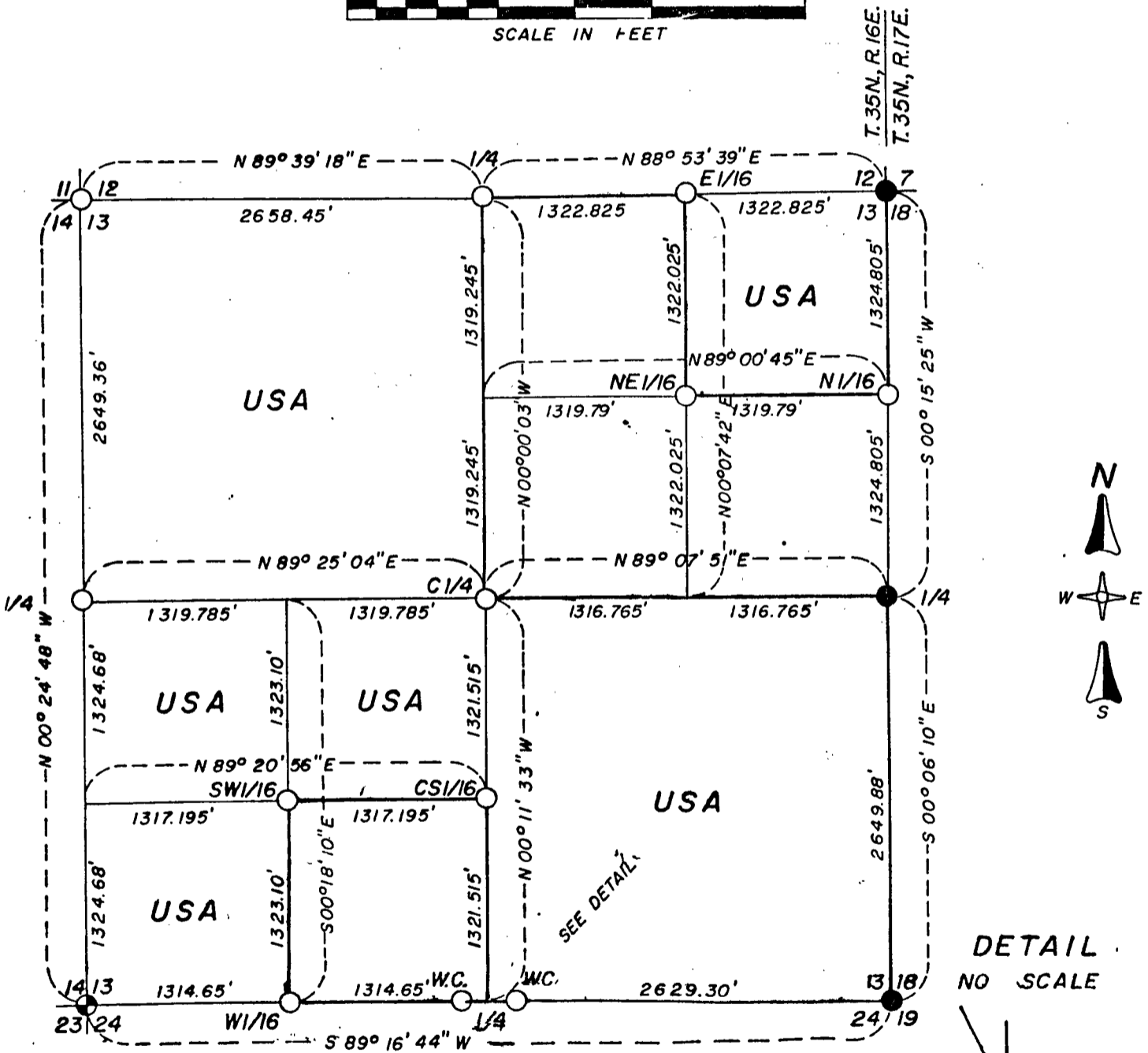
County Clerk

PLAT OF SURVEY

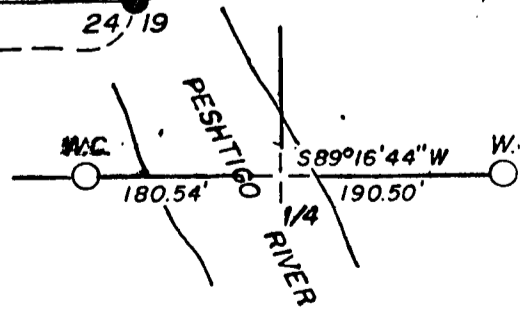
SHEET 1 OF 6

U.S. GOVERNMENT LAND

BEING NE¹/₄-NE¹/₄; NW¹/₄; N¹/₂-SW¹/₄; SW¹/₄-SW¹/₄ & SE¹/₄
ALL IN SECTION 13, TOWNSHIP 35 NORTH, RANGE 16 EAST
FOURTH PRINCIPAL MERIDIAN, FOREST COUNTY, WISCONSIN



DETAIL
NO SCALE

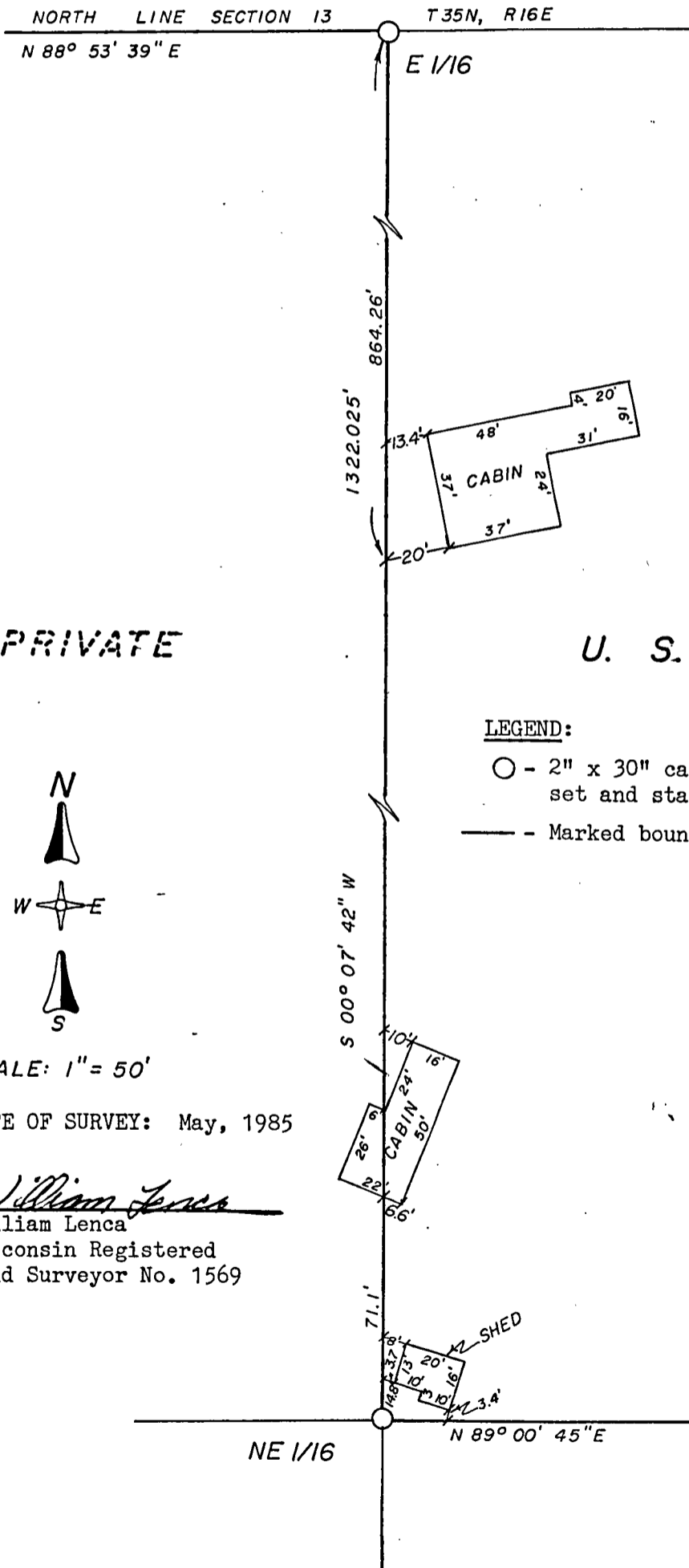


LEGEND

- Existing 4" dia. Iron Post with brass tablet stamped to identify corner.
- ⊕ Existing U.S.F.S. 2" Iron Pipe/3" dia. brass tablet stamped to identify corner
- 2" x 30" cast aluminum U. S. F. S. Monument set and stamped to identify corner.
- Marked boundary lines of U. S. Government.

SKETCH OF ENCROACHMENT

LOCATED IN THE NORTHEAST QUARTER OF THE NORTHEAST QUARTER (NE $\frac{1}{4}$ -NE $\frac{1}{4}$)
OF SECTION 13, TOWNSHIP 35 NORTH, RANGE 16 EAST, FOURTH PRINCIPAL
MERIDIAN, FOREST COUNTY, WISCONSIN



SURVEY NOTES

This survey was made by Lenca Surveying, William Lenca, Wisconsin Registered Land Surveyor No. 1569, as subcontractor for Aaron & Associates, Kim Pritzlaff, Wisconsin Registered Land Surveyor No. 1259. The survey was made for the purpose of establishing, marking and perpetuating the corners and boundary lines of U.S. Government Land where they are adjacent to private lands on the perimeter and within Section 13, Township 35 North, Range 16 East, Forest County, Wisconsin, as shown on the plat map herewith.

The original Government Subdivision of this township was made in 1857. A survey of the SE $\frac{1}{4}$ -SW $\frac{1}{4}$ of said section 13 was made by Henry Gremmer, Wisconsin RLS No. 394, in 1976. In his survey, Mr. Gremmer recovered a very old squared wood post at the center quarter corner of Section 13 and monumented this position with a 2" diameter Iron Pipe. This position fits reasonably well with the intersection of the quarter lines, and was accepted for this survey.

The corner positions recovered and established by this survey are monumented by monuments as described in the map legend.

The bearings between corner positions are true bearings as determined by Solar Observations taken at the SW1/16 Corner of said Section 13 on May 2, 1985. The relative accuracy of the unadjusted field measurements of the control traverse for corner establishment was one (1) part in 37,000.

CORNERS RECOVERED AND RESTORED

1. Section Corner to Sections 12-13, T.35N., R.16E and Sections 7-18, T.35N., R.17E.

This corner was monumented by J.J. Jenkins in 1934, and perpetuated by Jean F. Resvick in 1969.

Corner References:

White Spruce 4"	N40°E	22.51 feet
Elm 4"	S50°E	42.56 feet
White Spruce 5"	S84°W	47.78 feet
Elm 3"	N47°W	13.23 feet
7" Steel Sign Post	S13°W	2.8 feet

2. Quarter Corner to Section 13, T35N, R16E and Section 18, T35N, R17E.

This corner was monumented by J.J. Jenkins in 1934, and perpetuated by Jean F. Resvick in 1968.

Corner References:

Maple 6"	N12°W	12.37 feet
Maple 5"	N76°E	13.17 feet
Maple 7"	S07°W	7.73 feet
7" Steel Sign Post	S86°W	5.9 feet

3. Section Corner to Sections 13-24, T35N, R16E and Sections 18-19, T35N, R17E.

This corner was monumented by J.J. Jenkins in 1934, and perpetuated by Jean F. Resvick in 1969.

Corner References:

Elm 6"	N43°E	38.98 feet
Elm 7"	S08°E	26.87 feet
Elm 4"	S87°W	40.97 feet
Norway Pine 5"	N20°W	53.68 feet

4. Section Corner to Sections 13-14-23-24, T35N, R16E.

This corner position was recovered from original evidence by Milo E. Stefan in October of 1980.

Corner References:

S. Maple 8"	N25 ^o E	23.42 feet
White Ash 8"	S37 ^o E	31.95 feet
S. Maple 6"	N43 ^o W	47.81 feet
S. Maple 8"	S52 ^o W	20.93 feet
Steel Sign Post	North	2.2 feet

5. Quarter Corner to Sections 12 and 13, T35N, R16E.

Found plantation post with Iron Pipe laying next to it. This position fit well with GLO river calls. Searched in area of post for GLO B.T.'s and found rotted remains of a Hemlock stump S18^oW, 26.4 feet from post. This matched GLO B.T., therefore post was monumented as corner position.

Corner References:

Cherry 6"	N75 ^o E	9.58 feet
Ironwood 6"	S05 ^o W	30.00 feet
Cherry 6"	S89 ^o W	25.54 feet
7' Steel Sign Post	North	2.70'feet

CORNERS RE-ESTABLISHED1. Section Corner to Sections 11-12-13-14, T35N, R16E.

This corner was considered a lost corner and was re-established by double proportionate measurement.

Corner References:

S. Maple 8"	S83 ^o E	15.11 feet
S. Maple 10"	S08 ^o E	37.11 feet
S. Maple 6"	S66 ^o W	35.51 feet
S. Maple 8"	N38 ^o W	30.72 feet
7' Steel Sign Post	North	2.6 feet

2. Quarter Corner to Sections 13 and 14, T35N, R16E.

This corner was considered a lost corner and was re-established by single proportionate measurement between the Northwest Corner and the Southwest Corner of Section 13.

Corner References:

Ironwood 5"	N29 ^o W	97.85 feet
Poplar 5"	S65 ^o E	10.58 feet
7' Steel Sign Post	S29 ^o W	5.9 feet
7' Steel Sign Post	N36 ^o E	6.6 feet

3. Quarter Corner to Sections 13 and 24, T35N, R16E.

This corner was considered a lost corner and was re-established by single proportionate measurement between the Southeast Corner and the Southwest Corner of Section 13. The corner position falls in the Peshtigo River, therefore 2 Witness Corners were established on the South Line of Section 13 as follows:

Witness Corner - 190.50 feet East		
Cherry 5"	N25 ^o W	19.58 feet
Norway Pine 5"	N78 ^o E	19.18 feet
Norway Pine 7"	S15 ^o E	50.61 feet
7' Steel Sign Post	N67 ^o W	4.8 feet

Witness Corner - 180.54 feet West		
Cherry 12"	N42°W	44.50 feet
Poplar 5"	N68°E	9.18 feet
Norway Pine 8"	S40°W	55.08 feet
7' Steel Sign Post	S84°E	3.25 feet

CORNERS ESTABLISHED1. Center Quarter Corner Section 13, T35N, R16E.

This corner was monumented by Henry Gremmer, RLS 394, in 1976. Mr. Gremmer recovered a very old squared wood post at this position. This location fits reasonably well with the intersection of the quarter lines, and was accepted as the corner.

Corner References:

Scotch Pine 8"	N10°E	23.58 feet
Scotch Pine 12"	N46°E	28.65 feet
Poplar 7"	S24°W	22.44 feet
7' Steel Sign Post	East	3.15 feet

2. West One Sixteenth Corner Between Sections 13 and 24, T35N, R16E.

Corner established on line and at midpoint between section corner and quarter corner.

Corner References:

Spruce 30"	N12°E	51.45 feet
Elm 8"	S23°W	24.86 feet
Poplar 8"	N74°W	51.20 feet
8' Steel Sign Post	N65°W	1.7 feet

3. Northeast One Sixteenth Corner Section 13, T35N, R16E.

Corner established at the intersection of straight lines between opposite Sixteenth Corners.

Corner References:

Norway Pine 8"	N15°W	9.84 feet
Norway Pine 12"	S07°E	8.85 feet
Norway Pine 8"	S82°W	5.10 feet
7' Steel Sign Post	N15°E	2.6 feet

4. East One Sixteenth Corner Between Sections 13 and 12, T35N, R16E.

Corner established on line and at midpoint between section corner and quarter corner.

Corner References:

Spruce 9"	N02°W	35.15 feet
Balsam 9"	S80°E	16.87 feet
S. Maple 6"	S10°W	28.78 feet
7' Steel Sign Post	S04°W	9.7 feet

5. Southwest One Sixteenth Corner Section 13, T35N, R16E.

Corner established at the intersection of straight lines between opposite Sixteenth Corners.

Corner References:

Poplar 14"	S44°W	96.45 feet
Cherry 12"	N64°W	81.09 feet
Cherry 8"	N78°E	76.64 feet
7' Steel Sign Post	N78°E	3.8 feet

6. South Center One Sixteenth Corner Section 13, T35N, R16E.

Corner established on line and at midpoint between the south quarter corner and the center quarter corner.
 Corner References:

Norway Pine 10"	S30°E	28.37 feet
Norway Pine 5"	S24°W	18.67 feet
Cherry 6"	S77°W	57.43 feet
7' Steel Sign Post	N54°E	4.0 feet

*) SURVEYOR'S AFFIDAVIT

State of Wisconsin)
 County of Forest)^{ss}

I, William Lenca, a registered land surveyor in the State of Wisconsin, do hereby certify: That I have surveyed and subdivided Section 13, Township 35 North, Range 16 East, Fourth Principal Meridian, Forest County, Wisconsin. The plat map and survey notes are a correct representation of the land surveyed and subdivided. I have surveyed and subdivided said section in accordance with the rules for the survey of the public lands and with the statutes of the State of Wisconsin.

DATED this 21st day of JUNE, 1985

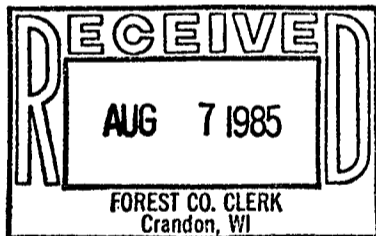
William Lenca
 William Lenca, Subcontractor
 Wisconsin Registered
 Land Surveyor No. 1569



DATE OF SURVEY: 10/84 - 5/85

DATED this 21 day of June, 1985.

Kim Pritzlaff
 Kim Pritzlaff, Principal Contractor
 Wisconsin Registered
 Land Surveyor No. 1259



Dora C. James
 Forest Co. Clerk



Plat ready for filing: Paul S. Staege
 District Ranger

*)
 7. North Sixteenth Corner between Sections 13-18 of T35N, R16 and 17E.

Located a Brass capped 2" diameter iron pipe 8 feet out of position perpetuated from the Township survey of 1933 by Franklin Gould. Did not accept position due to great variance in position. Set this corner at midpoint between the northeast and east quarter corners of Section 13.
 Corner references:

Maple 6"	S 82 E	7.43'
Maple 6"	S 07 W	25.45'
USFS monument	N 74 W	8.07'
Steel Sign Post	N 78 W	4.1'